

## Solar 4 All Monthly Activity Report - April 2013

Site	Property Owner	Cost per Project (\$k)	NPV of 20 Year Lease Cost (\$k)	EPC Contractor	Site Location Address
<b>Segment 1a</b>					
Linden	PSE&G		N/A	ASP	South Wood Avenue, Linden, NJ 07036
Yardville	PSE&G		N/A	ACE	Broad Street, Hamilton, NJ 08611
Silver Lake	PSE&G		N/A	JFC	410 Silver Lake Avenue, Edison, NJ 08817
Trenton	PSE&G		N/A	SunEdison	500-520 Brunswick Avenue, Trenton, NJ 08638
Central HQ	PSE&G		N/A	Solis (Solyndra)	472 Weston Canal Road, Franklin, NJ 08873
Edison Training	PSE&G		N/A	Henkle & McCoy	234 Pierson Avenue, Edison, NJ 08837
Thorofare	PSE&G		N/A	SunEdison	Jessup Road, Thorofare, NJ 08086
Hackensack	PSE&G		N/A	JFC	194-210 South River Street, Hackensack NJ 07601
Metro/Clifton	PSE&G		N/A	Gloria Solar	150 Circle Ave, Clifton, NJ 07011
S. DivHQ Moorestown	PSE&G		N/A	Vanguard	360 New Albany Road, Moorestown, NJ
<b>Segment 1b</b>					
CPP Bayonne	CenterPoint Properties		\$1,425	ASP	30-100 Pulaski Street, Bayonne, NJ 07002
Matrix - Stultz Rd	Matrix Development Group		\$2,267	Pro-Tech	45 Stults Rd, South Brunswick, NJ 08810
Rider	Rider University		\$650	Alteris	2083 Lawrenceville Road, Lawrenceville, NJ 08648
NJMC / Kearny Landfill	NJ Meadowland Commission		\$2,408	Sundurance	932 Bellville Turnpike, Kearny, Hudson County NJ 07032
Mill Creek	Judith Tucci		\$3,231	Juwi	600 Irick Road, Westampton, NJ 08060
Food Bank	Community Food Bank of NJ		\$778	Mercury	31 Evans Terminal, Hillside, NJ 07250
Raritan Center	Summit Associates Inc.		\$1,757	ASP	45 Fernwood Avenue and 110 Fieldcrest Avenue, Edison, NJ 08818
BlackRock-Matrix	Granite South Brunswick, LLC		\$1,827	Pro-Tech	140 Docks Corner Road, South Brunswick, NJ 08810
<b>Segment 1c</b>					
Matrix Bldg A & B	Matrix Development		\$2,222	enXco	1000 & 1050 Amboy Ave, Perth Amboy, NJ 08861
Barringer	Newark Public Schools		\$643	Mercury	90 Parker St, Newark, NJ 07104
Park	Newark Public Schools		\$488	Mercury	120 Manchester Place, Newark, NJ 07104-1704
Camden (NWK)	Newark Public Schools		\$972	ALM	281 & 321 Camden Street Newark, New Jersey 07103
New Central HS	Newark Public Schools		\$500	LB Electric	246 18th Ave, Newark, NJ 07108
<b>Segment 2</b>					
Pole-Attached	PSE&G	See p.4 of Activity Report	N/A	Riggs-Distler	Various

**Notes:**

"Cost per Project" corresponds to projects that have been placed in service.

"NPV of 20 Year Lease Cost" is derived using an annual discount rate of 5.07%

Regarding Segment 2 (Pole-attached): Riggs Distler is the installation contractor, not an EPC contractor

## Solar 4 All Monthly Activity Report - April 2013

Site	Owner location	Type of customer	Status of the installation	Capacity of Project (MW-DC)
<b>Segment 1a</b>				
Linden	80 Park Plaza, Newark, NJ 07102	Utility	Commercial Operation	3.20
Yardville	80 Park Plaza, Newark, NJ 07102	Utility	Commercial Operation	4.30
Silver Lake	80 Park Plaza, Newark, NJ 07102	Utility	Commercial Operation	2.02
Trenton	80 Park Plaza, Newark, NJ 07102	Utility	Commercial Operation	1.26
Central HQ	80 Park Plaza, Newark, NJ 07102	Utility	Commercial Operation	0.92
Edison Training	80 Park Plaza, Newark, NJ 07102	Utility	Commercial Operation	0.71
Thorofare	80 Park Plaza, Newark, NJ 07102	Utility	Commercial Operation	0.72
Hackensack	80 Park Plaza, Newark, NJ 07102	Utility	Commercial Operation	1.05
Metro/Clifton	80 Park Plaza, Newark, NJ 07102	Utility	Commercial Operation	0.73
S. DivHQ Moorestown	80 Park Plaza, Newark, NJ 07102	Utility	Construction	1.10
<b>Segment 1b</b>				
CPP Bayonne	1808 Swift Drive, Oak Brook, IL 60523-1501	Warehouse	Commercial Operation	1.75
Matrix - Stultz Rd	Forsgate Drive CN 4000, Cranbury, NJ 08512	Warehouse	Commercial Operation	2.98
Rider	2083 Lawrenceville Road, Lawrenceville, NJ 08548	University	Commercial Operation	0.74
NJMC / Kearny Landfill	One DeKorte Park Plaza, Lyndhurst, NJ 07071	Landfill	Commercial Operation	3.00
Mill Creek	4 St. Albans Place, Haworth, NJ 07641	Private Landowner	Commercial Operation	3.82
Food Bank	31 Evans Terminal Rd, Hillside, New Jersey 07250	Warehouse	Commercial Operation	1.07
Raritan Center	Raritan Plaza I, Edison, NJ 08818	Warehouse	Commercial Operation	2.22
BlackRock-Matrix	BlackRock, 40 E. 52nd Street, New York, NY 10022	Warehouse	Commercial Operation	2.97
<b>Segment 1c</b>				
Matrix Bldg A & B	Forsgate Drive CN 4000, Cranbury, NJ 08512	Warehouse	Commercial Operation	2.86
Barringer	Newark Public Schools, 2 Cedar Street, Newark NJ 07102-3051	Public Schools	Commercial Operation	0.65
Park	Newark Public Schools, 2 Cedar Street, Newark NJ 07102-3051	Public Schools	Commercial Operation	0.51
Camden (NWK)	Newark Public Schools, 2 Cedar Street, Newark NJ 07102-3051	Public Schools	Commercial Operation	0.91
New Central HS	Newark Public Schools, 2 Cedar Street, Newark NJ 07102-3051	Public Schools	Commercial Operation	0.50
<b>Segment 2</b>				
Pole-Attached	80 Park Plaza, Newark, NJ 07102	Utility	Comm Op / Ongoing Construc	37.75

## Solar 4 All Monthly Activity Report - April 2013

Site	Equipment installed (Inverters; Panels)
<b>Segment 1a</b>	
Linden	Six Sunny Central SC500-HE-US inverters; 7,766 Suntech STP280-24/Vd, 3,718 STP275-24/Vd panels
Yardville	Eight Advanced Energy Solaron 3159500-0001A2 inverters, one Solaron 250 inverters; 5,640 Suntech STP270-24/VD, 4,368 STP275-24/VD, 1,512 STP280-24/VD panels
Silver Lake	Three SMA Sunny Central SC 500U, one SC 250U inverters; 3,514 Sharp ND-224UC1, 5,236 ND-U235F1
Trenton	Three Satcon PowerGate Plus PVS-500 inverters; 5,496 Yingli Solar YL230b-29b panels
Central HQ	One Satcon PowerGate Plus PVS-135, one PVS-250, one PVS-375 inverters; 4,180 Solyndra SL-001-182U, 648 Solar World SW240MONO panels
Edison Training	One Satcon PowerGate Plus PVS-500, one PVS-135 inverters; 3,164 Gloria Solar GSM6-225D-E1 panels
Thorofare	One Advanced Energy Solaron-500kW, one Solaron-250kW inverters; 2,618 SunTech STP275-24Vd panels
Hackensack	Two Advanced Energy Solaron-500kW, 4,472 MX Solar MX-60-235 panels
Metro/Clifton	Four Satcon Powergate Plus PVS-75, two PVS-135 inverters; 3,122 Gloria Solar GSM6-235D-E1 panels
S. DivHQ Moorestown	Under construction
<b>Segment 1b</b>	
CPP Bayonne	Three SMA SC500U inverters; 7,938 Trina Solar TSM-220PA05 panels
Matrix - Stultz Rd	Five Solaron 3159500-1001AD inverters; 12,684 Kyocera K0235GX-LPB panels
Rider	Two AEI inverters; 2,640 Suntech STP-280 panels
NJMC / Kearny Landfill	Seven Advanced Energy Solaron inverters 2x500kW, 3x333kW, 2x250kW; 12,506 Kyocera KD240GX-LFB panels
Mill Creek	Seven SMA America SC500U inverters; 29,400 Solar Frontier SF-130-L panels
Food Bank	Two Advanced Energy Solaron 500kW inverters; 4,667 Trina Solar TSM-230PA05 panels
Raritan Center	Four SMA Sunny Central 600US, One SMA SB8000US inverters; 7,098 Hyundai HIS-M230SG, 2,604 HIS-M227SG panels
BlackRock-Matrix	Five AE Solaron 3159000-1001AJ inverters; 12,376 Upsolar UP-M240P panels
<b>Segment 1c</b>	
Matrix Bldg A & B	Five SMA SC500U inverters; 10,395 Suntech STP275-24VD panels
Barringer	Two Satcon PowerGate Plus PVS-250, one PVS-135 inverters; 2,310 Suntech STP280-24VB-1 panels
Park	One Satcon PowerGate Plus PVS-375, one PVS-100, one PVS-75 inverters; 1,440 Sunpower PL-SUN-SPR-305-U, 264 Suntech STP270-24/VB-1 panels
Camden (NWK)	One Solaron 3159000-1000 A1, one Solaron 3159000-1000 A1; 3,264 ET Solar ET-P672280 panels
New Central HS	Two Satcon PowerGate Plus PVS-100, three Satcon Solstice SDMSO100480-LNIU inverters; 1,857 Suntech STP270-24/VB-1 panels
<b>Segment 2</b>	
Pole-Attached	Suntech STP200-18/UB-1, STP205-18/UD, STP210-18/UB-1, STP215-20/WD, STP220-20/WD, STP225-20/WD, Trina Solar TSM-220PA05, TSM-225PA05, TSM-235PA05, TSM-240PA05

## Solar 4 All Monthly Activity Report - April 2013

### April 2013 Monthly Update

Segment	Energy Produced (MWh AC)	Net Energy Sales (\$)	SREC's Sold	SREC Revenue (\$)	Capacity Sold (MW-days)	Net Capacity Sales (\$)	Investment (\$)	Program Expenses (\$)	Projects Completed / Seg 2 Panels Installed	MW Installed	Pole-attached Units Communicating
Segment 1a	1,709	\$72,788	-	\$0	123.0	\$12,930	\$107,171	\$888,890	0	0.0	
Segment 1b	2,681	\$114,184	-	\$0	159.0	\$2,348	\$22,603	\$810,646	0	0.0	
Segment 1c	755	\$32,165	-	\$0	54.0	\$5,470	\$0	\$65,044	0	0.0	
Segment 2	4,176	\$177,869	-	\$0	282.0	\$23,369	\$1,794,253	\$93,156	2,861	0.6	150,111
<b>Program Total</b>	<b>9,320</b>	<b>\$397,006</b>	<b>-</b>	<b>\$0</b>	<b>618.0</b>	<b>\$44,117</b>	<b>\$1,924,027</b>	<b>\$1,857,736</b>		<b>0.6</b>	

## Solar 4 All Year-to-Date Activity Report

### Year-to-Date Update through April 2013

Segment	Energy Produced (MWh AC)	Net Energy Sales (\$)	SREC's Sold	SREC Revenue (\$)	Capacity Sold (MW-days)	Net Capacity Sales (\$)	Investment (\$)	Program Expenses (\$)	Projects Completed / Seg 2 Panels Installed	MW Installed
Segment 1a	4,355	\$184,869	4,453	\$498,781	492.0	\$51,720	\$607,227	\$1,209,738	0	0.0
Segment 1b	6,502	\$276,239	6,448	\$722,240	636.0	\$9,392	\$57,218	\$1,307,090	0	0.0
Segment 1c	1,846	\$78,216	1,656	\$185,489	216.0	\$21,879	\$514	\$272,443	0	0.0
Segment 2	11,543	\$490,763	10,063	\$1,127,157	1,128.0	\$93,475	\$15,830,920	\$478,409	12,500	2.9
<b>YTD Program Total</b>	<b>24,247</b>	<b>\$1,030,087</b>	<b>22,620</b>	<b>\$2,533,666</b>	<b>2,472.0</b>	<b>\$176,466</b>	<b>\$16,495,879</b>	<b>\$3,267,680</b>		<b>2.9</b>

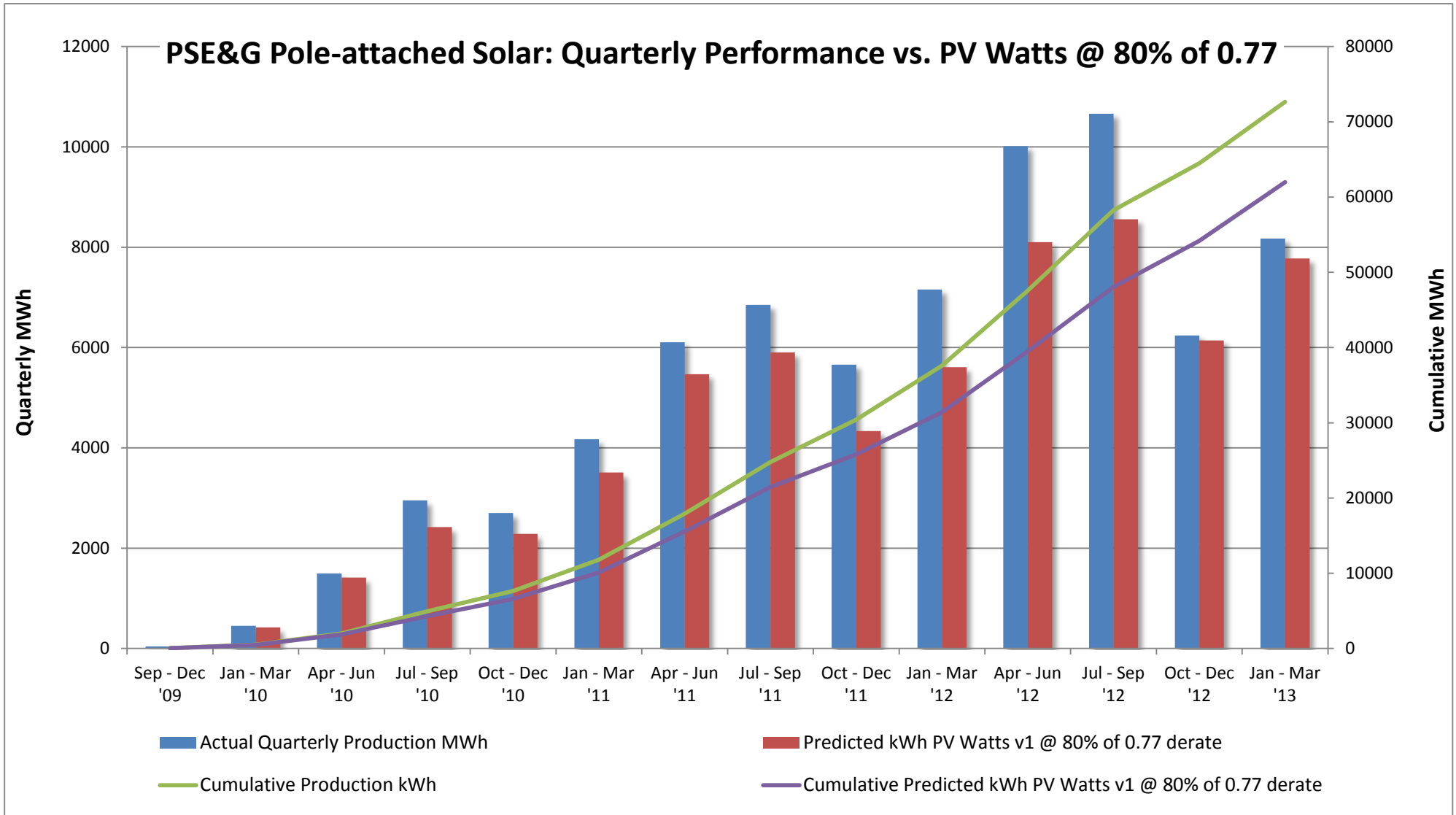
## Solar 4 All Program-to-Date Activity Report

### Program-to-Date through April 2013

Segment	Energy Produced (MWh AC)	Net Energy Sales (\$)	SREC's Sold	SREC Revenue (\$)	Capacity Sold (MW-days)	Net Capacity Sales (\$)	Investment (\$)	Program Expenses (\$)	Projects Completed / Seg 2 Panels Installed	MW Installed
Segment 1a	35,102	\$1,686,526	32,274	\$6,620,810	2,796.8	\$151,092	\$86,442,741	\$3,272,947	9	14.9
Segment 1b	32,917	\$1,417,097	27,668	\$3,735,096	1,953.2	\$27,055	\$75,830,575	\$4,728,348	8	18.6
Segment 1c	13,868	\$677,255	12,743	\$2,695,910	1,260.0	\$64,190	\$30,242,822	\$1,822,980	6	5.4
Segment 2	54,259	\$2,437,215	63,634	\$14,223,231	5,262.4	\$270,787	\$261,210,534	\$3,968,138	172,324	37.9
<b>Program-to-date Total</b>	<b>136,146</b>	<b>\$6,218,092</b>	<b>136,319</b>	<b>\$27,275,048</b>	<b>11,272.4</b>	<b>\$513,124</b>	<b>\$453,726,672</b>	<b>\$13,792,413</b>		<b>76.8</b>

#### Notes:

- "SREC's Sold" and "SREC Revenue" includes vintage year 2011, 2012 and 2013 SRECs
- "Net Energy Sales" and "Net Capacity Sales" are tied to calendar month sales reported. These values may not tie to the amounts recorded for financial reporting due to timing of PJM invoices. Adjustment made in April 2013 to Net Energy Sales for monthly, YTD, and PTD figures to include South Jersey Energy Sales.
- Monthly "Pole-attached Units Installed" & "Pole-attached MW Installed" are preliminary estimates and subject to change. Adjustments to prior months will be reflected in YTD values. Capacity specified in certain previously filed capacity reports represented gross installed capacity. The values shown in the table above account for net installed capacity (total installs minus total removals).
- "Pole Attached Units Communicating" represents the *average, daily* number of panels that communicated during the month.
- The columns "Energy Produced" and "SRECs Sold" do not sync because of the timing of SREC auctions, through which SRECs are sold.



**Seg1 (Plants):**

- Exceptional weather conditions during April 2013 positively impacted solar production; irradiance above historical average.
- Updates below for sites damaged as a result of Superstorm Sandy storm surge and high winds:
  - Linden Solar - Restoration efforts continue with 2 of the 6 inverters returned to service during April 2013.
  - Bayonne Solar - Restoration efforts in April with the last of 3 inverters restored to service. This site is back at 100% capacity.
  - Raritan Center Solar - 100% of repairs at this location have been completed.
  - Central HQ Solar - 100% of repairs at this location have been completed.

**Seg2 (Pole Attached Solar):**

- Installation of solar units and development of communications network continues.
- Ongoing maintenance of existing installations continues.

## PSE&G Pole-Attached -- Count of Aggregators by Municipality -- March 2013

Municipality	Count of Aggregators Installed through March 2013
Allentown Boro	3
Audubon Boro	5
Barrington Boro	5
Bayonne City	16
Belleville Twp	9
Bellmawr Boro	15
Bergenfield Boro	4
Beverly City	3
Bloomfield Twp	11
Bogota Boro	2
Bordentown City	2
Bordentown Twp	10
Bound Brook Boro	3
Bridgewater Twp	25
Brooklawn Boro	4
Burlington City	11
Burlington Twp	15
Caldwell Boro	2
Camden City	50
Carlstadt Boro	11
Carteret Boro	15
Cedar Grove Twp	7
Cherry Hill Twp	46
Chesterfield Twp	7
Cinnaminson Twp	13
Clark Twp	10
Cliffside Park Boro	3
Clifton City	30
Collingswood Boro	8
Cranbury Twp	6
Cranford Twp	7
Delanco Twp	3
Delran Twp	8
Deptford Twp	22
Dumont Twp	6
Dunellen Boro	2
East Brunswick Twp	26
East Newark Boro	1
East Orange City	15
East Rutherford Twp	5
Eastampton Twp	6
Edgewater Boro	3
Edgewater Park Twp	7
Edison Twp	48
Elizabeth City	34
Elmwood Park Boro	9
Emerson Boro	6
Englewood City	12
Englewood Cliffs Boro	4
Evesham Twp	12

\*Finalized data for the month of April 2013  
is not available at this time.  
It will appear in next month's report.

## PSE&G Pole-Attached -- Count of Aggregators by Municipality -- March 2013

Municipality	Count of Aggregators Installed through March 2013
Ewing Twp	26
Fair Lawn Boro	14
Fairfield Twp Ess	15
Fairview Boro	4
Fanwood Boro	3
Fieldsboro Boro	1
Florence Twp	11
Fort Lee Boro	10
Franklin Twp Som	44
Garfield City	7
Garwood Boro	2
Glen Rock Boro	5
Gloucester City	7
Gloucester Twp	16
Green Brook Twp	4
Hackensack City	18
Haddon Heights Boro	4
Haddon Twp	10
Haddonfield Boro	4
Hainesport Twp	3
Haledon Boro	1
Hamilton Twp Mer	64
Harrison Town	3
Hasbrouck Heights	4
Haworth Boro	1
Hawthorne Boro	7
Highland Park Boro	6
Hillsborough Twp	24
Hillsdale Boro	1
Hillside Twp	7
Hi-Nella Boro	1
Hoboken City	4
Hohokus Boro	2
Hopewell Boro	1
Hopewell Twp Mer	10
Irvington Town	14
Jersey City	54
Kearny Town	16
Kenilworth Boro	5
Lawnside Boro	3
Lawrence Twp Mer	21
Leonia Twp	3
Linden City	32
Little Falls Twp	5
Little Ferry Boro	6
Livingston Twp	8
Lodi Boro	9
Lumberton Twp	10
Lyndhurst Twp	7
Magnolia Boro	4

\*Finalized data for the month of April 2013  
is not available at this time.  
It will appear in next month's report.



## PSE&G Pole-Attached -- Count of Aggregators by Municipality -- March 2013

Municipality	Count of Aggregators Installed through March 2013
Mansfield Twp Bur	13
Manville Boro	6
Maple Shade Twp	12
Maplewood Twp	6
Maywood Boro	4
Medford Lakes Boro	2
Medford Twp	15
Merchantville Boro	0
Metuchen Boro	5
Middlesex Twp	7
Midland Park Boro	2
Millstone Boro	1
Montclair Twp	13
Montgomery Twp	18
Moonachie Boro	3
Moorestown Twp	12
Mount Ephraim Boro	4
Mount Holly Twp	8
Mount Laurel Twp	21
Mountainside Boro	6
National Park Boro	6
New Brunswick City	15
New Milford Boro	3
Newark City	89
North Arlington Boro	6
North Bergen Twp	14
North Brunswick Twp	19
North Caldwell Twp	5
North Haledon Boro	2
North Plainfield Boro	7
Nutley Town	5
Oaklyn Boro	4
Oradell Boro	2
Orange City	6
Palisades Park Boro	2
Palmyra Boro	5
Paramus Boro	17
Passaic City	13
Paterson City	45
Pemberton Twp	5
Pennington Boro	3
Pennsauken Twp	42
Perth Amboy City	14
Piscataway Twp	46
Plainfield City	16
Plainsboro Twp	3
Princeton Boro	1
Princeton Twp	2
Prospect Park Boro	1
Rahway City	9

\*Finalized data for the month of April 2013  
is not available at this time.  
It will appear in next month's report.

## PSE&G Pole-Attached -- Count of Aggregators by Municipality -- March 2013

Municipality	Count of Aggregators Installed through March 2013
Raritan Boro	4
Ridgefield Boro	3
Ridgefield Park Village	5
Ridgewood Village	3
River Edge Boro	3
River Vale Twp	1
Riverside Boro	5
Riverton Boro	2
Rochelle Park Twp	5
Roseland Boro	3
Roselle Boro	8
Roselle Park Boro	4
Runnemede Boro	5
Rutherford Boro	7
Saddle Brook Twp	6
Scotch Plains Twp	7
Secaucus Town	13
Somerdale Boro	3
Somerville Boro	6
South Bound Brook Boro	2
South Brunswick Twp	37
South Hackensack Twp	3
South Orange Village Twp	2
South Plainfield Boro	39
Southampton Twp	15
Springfield Twp Bur	11
Teaneck Twp	11
Tenafly Boro	5
Teterboro Boro	3
Totowa Boro	8
Trenton City	36
Undefined Municipality	3
Union Twp Uni	26
Upper Freehold Twp	2
Verona Twp	2
Voorhees Twp	5
Waldwick Boro	4
Wallington Boro	2
Warren Twp	1
Washington Twp Ber	4
Washington Twp Glo	1
Washington Twp Mer	5
Watchung Boro	6
Wayne Twp	39
West Caldwell Twp	6
West Deptford Twp	23
West Orange Twp	22
West Paterson Boro	7
West Windsor Twp	13
Westampton Twp	9

\*Finalized data for the month of April 2013  
is not available at this time.  
It will appear in next month's report.

## PSE&G Pole-Attached -- Count of Aggregators by Municipality -- March 2013

Municipality	Count of Aggregators Installed through March 2013
Westfield Town	4
Westville Boro	5
Westwood Boro	5
Willingboro Twp	16
Woodbridge Twp	53
Woodbury City	8
Woodbury Heights Boro	3
Woodcliff Lakes Boro	1
Woodlynne Boro	1
Wood-Ridge Boro	3
Wyckoff Twp	2
<i>TOTAL</i>	2,239

\*Finalized data for the month of April 2013 is not available at this time. It will appear in next month's report.

## PSE&G Pole-Attached -- Summary by Municipality -- March 2013

Municipality	March 2013 Count of Panels Installed	Thru Feb 2013 Sum of Panel Capacity (kW DC)	Cumulative Capacity (kW DC) thru March 2013
Allendale Boro	-	0.2	0.2
Allentown Boro	11	8.7	11.3
Audubon Boro	-	91.5	91.5
Audubon Park Boro	-	3.0	3.0
Barrington Boro	-	68.5	68.5
Bayonne City	-	376.8	376.8
Bellmawr Boro	-	211.9	211.9
Belleville Twp	-	174.8	174.8
Bergenfield Boro	-	95.4	95.4
Berkley Heights Twp	-	1.2	1.2
Beverly City	-	56.3	56.3
Bloomfield Twp	7	233.5	235.2
Bogota Boro	-	48.0	48.0
Bordentown City	-	14.9	14.9
Bordentown Twp	-	163.0	163.0
Bound Brook Boro	-	93.6	93.6
Bridgewater Twp	63	367.8	383.0
Brooklawn Boro	-	46.3	46.3
Burlington City	-	249.0	249.0
Burlington Twp	-	249.7	249.7
Caldwell Boro	9	40.5	42.7
Camden City	203	1,097.7	1,146.2
Carlstadt Boro	3	148.5	149.2
Carteret Boro	16	311.3	315.1
Cedar Grove Twp	53	107.6	120.3
Cherry Hill Twp	-	668.4	668.4
Chesterfield Twp	-	78.9	78.9
Cinnaminson Twp	-	251.2	251.2
Clark Twp	1	138.6	138.8
Cliffside Park Boro	31	57.0	64.4
Clifton City	158	685.3	723.3
Collingswood Boro	-	138.5	138.5
Cranbury Twp	-	66.2	66.2
Cranford Twp	43	123.1	133.4
Delanco Twp	-	63.7	63.7
Delran Twp	-	119.9	119.9
Deptford Twp	-	366.7	366.7
Dumont Twp	-	93.9	93.9
Dunellen Boro	-	70.2	70.2
East Brunswick Twp	62	351.9	366.8
Eastampton Twp	-	62.9	62.9
East Newark Boro	-	7.6	7.6
East Orange City	-	360.1	360.1
East Rutherford Twp	1	90.0	90.2
Edgewater Boro	-	22.1	22.1
Edgewater Park Twp	-	101.5	101.5
Edison Twp	89	1,056.5	1,077.9
Elizabeth City	31	831.5	838.9
Elmwood Park Boro	-	160.9	160.9
Emerson Boro	-	56.9	56.9

\*Finalized data for the month of April 2013 is not available at this time. It will appear in next month's report.

Count of Panels by Municipality  
\*Does not reflect adjustments made for removals

Panel Report  
Page 1 of 5

## PSE&G Pole-Attached -- Summary by Municipality -- March 2013

Municipality	March 2013 Count of Panels Installed	Thru Feb 2013 Sum of Panel Capacity (kW DC)	Cumulative Capacity (kW DC) thru March 2013
Englewood City	-	185.8	185.8
Englewood Cliffs Boro	-	55.7	55.7
Essex Fells Twp	10	6.9	9.3
Evesham Twp	-	170.4	170.4
Ewing Twp	139	448.6	481.5
Fairfield Twp Ess	-	216.6	216.6
Fair Lawn Boro	-	221.7	221.7
Fairview Boro	-	50.4	50.4
Fanwood Boro	3	37.4	38.1
Fieldsboro Boro	-	14.8	14.8
Florence Twp	-	152.3	152.3
Fort Lee Boro	89	127.1	148.5
Franklin Twp Som	149	615.1	650.8
Garfield City	-	134.3	134.3
Garwood Boro	-	20.2	20.2
Glen Ridge Boro	-	3.8	3.8
Glen Rock Boro	-	32.0	32.0
Gloucester City	-	177.5	177.5
Gloucester Twp	-	365.7	365.7
Green Brook Twp	-	69.4	69.4
Guttenberg Town	-	0.7	0.7
Hackensack City	2	315.3	315.8
Haddon Heights Boro	-	66.2	66.2
Haddon Twp	-	187.8	187.8
Haddonfield Boro	-	28.4	28.4
Hainesport Twp	-	102.0	102.0
Haledon Boro	-	27.8	27.8
Hamilton Twp Mer	458	1,352.5	1,461.9
Harrison Town	-	57.7	57.7
Hasbrouck Heights	12	80.5	83.4
Haworth Boro	-	8.0	8.0
Hawthorne Boro	-	95.9	95.9
Highland Park Boro	7	99.1	100.8
Hillsborough Twp	80	374.1	392.9
Hillsdale Boro	-	5.4	5.4
Hillside Twp	-	142.5	142.5
Hi-Nella Boro	-	10.5	10.5
Hoboken City	-	66.8	66.8
Hohokus Boro	-	7.6	7.6
Hopewell Boro	-	16.4	16.4
Hopewell Twp Mer	19	95.2	99.7
Irvington Town	-	231.1	231.1
Jersey City	-	1,107.5	1,107.5
Kearny Town	-	261.8	261.8
Kenilworth Boro	-	66.4	66.4
Lawnside Boro	-	53.2	53.2
Lawrence Twp Mer	-	319.2	319.2
Leonia Twp	-	42.2	42.2
Lincoln Park Boro	-	1.2	1.2
Linden City	49	551.6	563.3

\*Finalized data for the month of April 2013 is not available at this time. It will appear in next month's report.

Count of Panels by Municipality  
\*Does not reflect adjustments made for removals

Panel Report  
Page 2 of 5

## PSE&G Pole-Attached -- Summary by Municipality -- March 2013

Municipality	March 2013 Count of Panels Installed	Thru Feb 2013 Sum of Panel Capacity (kW DC)	Cumulative Capacity (kW DC) thru March 2013
Little Falls Twp	2	91.8	92.3
Little Ferry Boro	-	104.5	104.5
Livingston Twp	-	89.6	89.6
Lodi Boro	30	127.7	134.8
Lumberton Twp	-	85.3	85.3
Lyndhurst Twp	21	151.4	156.4
Magnolia Boro	-	91.0	91.0
Mansfield Twp Bur	-	117.0	117.0
Manville Boro	9	128.8	131.0
Maple Shade Twp	-	252.0	252.0
Maplewood Twp	-	76.5	76.5
Maywood Boro	-	49.5	49.5
Medford Lakes Boro	-	6.5	6.5
Medford Twp	-	118.2	118.2
Merchantville Boro	-	43.8	43.8
Metuchen Boro	32	115.6	123.3
Middlesex Twp	29	127.4	134.4
Midland Park Boro	-	17.7	17.7
Millstone Boro	7	5.0	6.7
Milltown Boro	-	0.5	0.5
Monroe Twp Mid	-	0.4	0.4
Montclair Twp	3	209.6	210.3
Montgomery Twp	-	161.7	161.7
Moonachie Boro	-	77.4	77.4
Moorestown Twp	-	212.9	212.9
Mount Ephraim Boro	-	73.0	73.0
Mount Holly Twp	-	116.0	116.0
Mount Laurel Twp	-	213.5	213.5
Mountainside Boro	-	66.9	66.9
National Park Boro	-	76.1	76.1
New Brunswick City	3	363.6	364.3
Newark City	-	2,004.0	2,004.0
New Milford Boro	-	62.6	62.6
North Arlington Boro	-	96.6	96.6
North Bergen Twp	-	270.8	270.8
North Brunswick Twp	6	402.4	403.8
North Caldwell Twp	-	37.8	37.8
North Haledon Boro	-	17.7	17.7
North Plainfield Boro	-	129.7	129.7
Nutley Town	7	127.8	129.5
Oaklyn Boro	-	56.2	56.2
Oradell Boro	-	21.5	21.5
Orange City	-	127.1	127.1
Palisades Park Boro	1	91.5	91.7
Palmyra Boro	-	87.2	87.2
Paramus Boro	3	159.1	159.8
Passaic City	-	212.6	212.6
Paterson City	31	857.5	864.9
Pemberton Twp	-	22.5	22.5
Pennington Boro	8	15.8	17.7

\*Finalized data for the month of April 2013 is not available at this time.  
It will appear in next month's report.

Count of Panels by Municipality  
\*Does not reflect adjustments made for removals

Panel Report  
Page 3 of 5

## PSE&G Pole-Attached -- Summary by Municipality -- March 2013

Municipality	March 2013 Count of Panels Installed	Thru Feb 2013 Sum of Panel Capacity (kW DC)	Cumulative Capacity (kW DC) thru March 2013
Pennsauken Twp	9	705.7	707.9
Perth Amboy City	18	319.3	323.6
Piscataway Twp	31	590.0	597.5
Plainfield City	-	329.4	329.4
Plainsboro Twp	-	49.9	49.9
Princeton Boro	-	3.3	3.3
Princeton Twp	-	16.0	16.0
Prospect Park Boro	-	27.2	27.2
Rahway City	51	318.1	330.3
Raritan Boro	-	62.6	62.6
Ridgefield Boro	8	78.6	80.5
Ridgefield Park Village	-	86.0	86.0
Ridgewood Village	1	28.8	29.1
River Edge Boro	-	57.9	57.9
Riverside Twp	-	77.8	77.8
Riverside Boro	-	37.8	37.8
Riverton Boro	-	23.6	23.6
River Vale Twp	-	1.9	1.9
Rochelle Park Twp	-	54.5	54.5
Rocky Hill Boro	-	3.3	3.3
Roseland Boro	26	19.0	25.2
Roselle Boro	8	139.2	141.2
Roselle Park Boro	8	68.3	70.2
Runnemede Boro	-	110.5	110.5
Rutherford Boro	3	45.5	46.3
Saddle Brook Twp	-	67.2	67.2
Scotch Plains Twp	14	113.4	116.8
Secaucus Town	1	250.2	250.5
Somerdale Boro	-	81.8	81.8
Somerville Boro	-	155.9	155.9
South Bound Brook Boro	-	39.7	39.7
South Brunswick Twp	47	354.4	365.7
South Hackensack Twp	-	48.4	48.4
South Orange Village Twp	-	21.1	21.1
South Plainfield Boro	104	480.8	505.7
Southampton Twp	-	141.4	141.4
Springfield Twp Bur	-	94.9	94.9
Springfield Twp Uni	-	3.7	3.7
Teaneck Twp	-	162.3	162.3
Tenafly Boro	-	71.0	71.0
Teterboro Boro	-	38.2	38.2
Totowa Boro	-	161.2	161.2
Trenton City	37	935.4	944.2
Union City	-	6.5	6.5
Union Twp Uni	32	425.4	433.0
Upper Freehold Twp	1	15.2	15.4
Verona Twp	1	41.4	41.6
Voorhees Twp	-	66.2	66.2
Waldwick Boro	-	34.4	34.4
Wallington Boro	-	66.0	66.0

\*Finalized data for the month of April 2013 is not available at this time.  
It will appear in next month's report.

Count of Panels by Municipality  
\*Does not reflect adjustments made for removals

Panel Report  
Page 4 of 5

## PSE&G Pole-Attached -- Summary by Municipality -- March 2013

Municipality	March 2013 Count of Panels Installed	Thru Feb 2013 Sum of Panel Capacity (kW DC)	Cumulative Capacity (kW DC) thru March 2013
Warren Twp	-	10.7	10.7
Washington Twp Ber	-	16.7	16.7
Washington Twp Glo	-	7.4	7.4
Washington Twp Mer	49	63.9	75.2
Watchung Boro	-	68.6	68.6
Wayne Twp	30	324.6	331.7
Weehawken Twp	-	0.5	0.5
West Caldwell Twp	29	106.7	113.7
West Deptford Twp	-	368.0	368.0
West Orange Twp	14	223.7	227.1
West Paterson Boro	15	61.4	65.0
West Windsor Twp	-	136.4	136.4
Westwood Boro	-	44.1	44.1
Westampton Twp	-	91.8	91.8
Westfield Town	83	122.5	142.4
West New York Town	-	7.2	7.2
Westville Boro	-	112.0	112.0
Willingboro Twp	-	139.8	139.8
Winfield Twp	-	3.3	3.3
Woodbridge Twp	241	1,126.4	1,184.2
Woodbury City	-	196.2	196.2
Woodbury Heights Boro	-	58.2	58.2
Woodcliff Lakes Boro	-	14.6	14.6
Woodlyne Boro	-	26.0	26.0
Wood-Ridge Boro	64	62.0	77.3
Wyckoff Twp	-	10.0	10.0
<b>TOTAL</b>	<b>2,915</b>	<b>37,867.6</b>	<b>38,564.8</b>

\*Finalized data for the month of April 2013 is not available at this time. It will appear in next month's report.

Count of Panels by Municipality  
\*Does not reflect adjustments made for removals

Panel Report  
Page 5 of 5