



September 23, 2014

In the Matter of the Petition of
Public Service Electric and Gas Company
for Approval of a Solar Generation Investment
Program and an Associated Cost Recovery Mechanism
BPU Docket No. EO09020125

VIA E-MAIL AND REGULAR MAIL

Kristi Izzo, Secretary
Office of the Secretary
Board of Public Utilities
44 South Clinton Avenue, 9th Floor
P.O. Box 350
Trenton, New Jersey 08625-0350

RE: SOLAR4ALL MONTHLY ACTIVITY REPORT – AUGUST 2014

Dear Secretary Izzo:

Pursuant to the Board's August 3, 2009 Order in the above referenced matter and subsequent discussions between PSE&G and Board Staff, enclosed are copies of the confidential and redacted public versions of Public Service Electric and Gas Company's Solar 4 All Monthly Program Activity Report for August 2014 ("Report").

As indicated, the Report contains proprietary, commercially sensitive financial information and portions of the Report are entitled to confidential treatment pursuant to Board regulations set forth at N.J.A.C. 14:1-12. Accordingly, PSE&G requests that the Board accord the redacted portions of the Report confidential treatment in accordance with those regulations, and that the redacted portions of the Report not be subject to public disclosure. In support of this request PSE&G submits the Affidavit of Todd Hranicka. Public Service is also serving Rate Counsel with the public and confidential versions of the Report and with Mr. Hranicka's Affidavit. By copy of this letter, it is respectfully requested that Rate Counsel maintain the confidentiality of this material as well.

Note that the electronic submission of this material includes only the public version of the Report and Mr. Hranicka's Affidavit; the confidential Report is being provided via regular mail.

Please advise if you have any questions or comments.

Respectfully submitted,

A handwritten signature in blue ink that reads "Matthew Weissman".

C Elizabeth Ackerman
Scott Hunter
Bethany Rocque-Romaine
Linda Wetzel
Stefanie Brand
Felicia Thomas-Friel

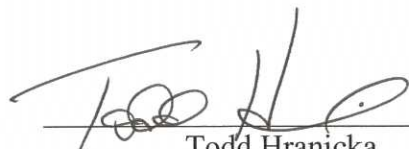
5. PSE&G requests that the Board maintain the confidentiality of the Competitive Information for an indefinite period of time. The release of PSE&G's Competitive Information from the past years may enable PSE&G's competitors to make an educated guess at PSE&G's current bidding process. For this reason, the confidentiality of the Competitive Information should be maintained for an indefinite period of time.

6. Therefore, the Board should grant PSE&G's request for confidential treatment of a portion of the report, redacting the specific project cost information. A proposed form of a redacted report is being filed with this affidavit.

7. I swear that the foregoing statements are true to the best of my knowledge.

8. PSE&G submits the following as the addressee for communications from the custodian for this information under *N.J.A.C. 14:2-12.1. et. Seq.* The Company hereby requests that all custodian communications (oral and written), including, without limitation, the notices listed in *N.J.A.C. 14:1-12.7* and *12.9* be directed to the following designee:

Sheree L. Kelly, Esq.
Assistant General Regulatory Counsel
Public Service Electric and Gas Company
80 Park Plaza - T5G
Newark, New Jersey 07102
Tel. No. (973) 430-6468
Fax. No. (973) 430-5983
E-mail: Sheree.Kelly@pseg.com



Todd Hranicka

Sworn to and Subscribed to

Before me this 23rd day of September, 2014

Bernadette A. Curtis

BERNADETTE A. CURTIS
NOTARY PUBLIC OF NEW JERSEY
My Commission Expires 5/8/2018

Solar 4 All Monthly Activity Report - August 2014

Site	Property Owner	Cost per Project (\$k)	NPV of 20 Year Lease Cost (\$k)	EPC Contractor	Site Location Address
Segment 1a					
Linden	PSE&G		N/A	ASP	South Wood Avenue, Linden, NJ 07036
Yardville	PSE&G		N/A	ACE	Broad Street, Hamilton, NJ 08611
Silver Lake	PSE&G		N/A	JFC	410 Silver Lake Avenue, Edison, NJ 08817
Trenton	PSE&G		N/A	SunEdison	500-520 Brunswick Avenue, Trenton, NJ 08638
Central HQ	PSE&G		N/A	Solis (Solyndra)	472 Weston Canal Road, Franklin, NJ 08873
Edison Training	PSE&G		N/A	Henkle & McCoy	234 Pierson Avenue, Edison, NJ 08837
Thorofare	PSE&G		N/A	SunEdison	Jessup Road, Thorofare, NJ 08086
Hackensack	PSE&G		N/A	JFC	194-210 South River Street, Hackensack NJ 07601
Metro/Clifton	PSE&G		N/A	Gloria Solar	150 Circle Ave, Clifton, NJ 07011
S. DivHQ Moorestown	PSE&G		N/A	Vanguard	360 New Albany Road, Moorestown, NJ
Segment 1b					
CPP Bayonne	CenterPoint Properties		\$1,402	ASP	30-100 Pulaski Street, Bayonne, NJ 07002
Matrix - Stults Rd	Matrix Development Group		\$2,228	Pro-Tech	45 Stults Rd, South Brunswick, NJ 08810
Rider	Rider University		\$642	Alteris	2083 Lawrenceville Road, Lawrenceville, NJ 08648
NJMC / Kearny Landfill	NJ Meadowland Commission		\$2,561	Sundurance	932 Bellville Turnpike, Kearny, Hudson County NJ 07032
Mill Creek	Judith Tucci		\$3,189	Juwi	600 Irick Road, Westampton, NJ 08060
Food Bank	Community Food Bank of NJ		\$772	Mercury	31 Evans Terminal, Hillside, NJ 07250
Raritan Center	Summit Associates Inc.		\$1,729	ASP	45 Fernwood Avenue and 110 Fieldcrest Avenue, Edison, NJ 08818
BlackRock-Matrix	Granite South Brunswick, LLC		\$1,800	Pro-Tech	140 Docks Corner Road, South Brunswick, NJ 08810
Segment 1c					
Matrix Bldg A & B	Matrix Development		\$2,191	enXco	1000 & 1050 Amboy Ave, Perth Amboy, NJ 08861
Barringer	Newark Public Schools		\$635	Mercury	90 Parker St, Newark, NJ 07104
Park	Newark Public Schools		\$482	Mercury	120 Manchester Place, Newark, NJ 07104-1704
Camden (NWK)	Newark Public Schools		\$971	ALM	281 & 321 Camden Street Newark, New Jersey 07103
New Central HS	Newark Public Schools		\$495	LB Electric	246 18th Ave, Newark, NJ 07108
Segment 2					
Pole-Attached	PSE&G		N/A	Riggs-Distler	Various

Notes:

"Cost per Project" corresponds to projects that have been placed in service.

"NPV of 20 Year Lease Cost" is derived using an annual discount rate of 5.07%

Regarding Segment 2 (Pole-attached): Riggs Distler is the installation contractor, not an EPC contractor

"Cost per Project" includes AFUDC

Solar 4 All Monthly Activity Report - August 2014

Site	Owner location	Type of customer	Status of the installation	Capacity of Project (MW-DC)
Segment 1a				
Linden	80 Park Plaza, Newark, NJ 07102	Utility	Commercial Operation	3.20
Yardville	80 Park Plaza, Newark, NJ 07102	Utility	Commercial Operation	4.30
Silver Lake	80 Park Plaza, Newark, NJ 07102	Utility	Commercial Operation	2.02
Trenton	80 Park Plaza, Newark, NJ 07102	Utility	Commercial Operation	1.26
Central HQ	80 Park Plaza, Newark, NJ 07102	Utility	Commercial Operation	0.92
Edison Training	80 Park Plaza, Newark, NJ 07102	Utility	Commercial Operation	0.71
Thorofare	80 Park Plaza, Newark, NJ 07102	Utility	Commercial Operation	0.72
Hackensack	80 Park Plaza, Newark, NJ 07102	Utility	Commercial Operation	1.05
Metro/Clifton	80 Park Plaza, Newark, NJ 07102	Utility	Commercial Operation	0.73
S. DivHQ Moorestown	80 Park Plaza, Newark, NJ 07102	Utility	Commercial Operation	1.07
Segment 1b				
CPP Bayonne	1808 Swift Drive, Oak Brook, IL 60523-1501	Warehouse	Commercial Operation	1.75
Matrix - Stults Rd	Forsgate Drive CN 4000, Cranbury, NJ 08512	Warehouse	Commercial Operation	2.98
Rider	2083 Lawrenceville Road, Lawrenceville, NJ 08548	University	Commercial Operation	0.74
NJMC / Kearny Landfill	One DeKorte Park Plaza, Lyndhurst, NJ 07071	Landfill	Commercial Operation	3.00
Mill Creek	4 St. Albans Place, Haworth, NJ 07641	Private Landowner	Commercial Operation	3.82
Food Bank	31 Evans Terminal Rd, Hillside, New Jersey 07250	Warehouse	Commercial Operation	1.07
Raritan Center	Raritan Plaza I, Edison, NJ 08818	Warehouse	Commercial Operation	2.22
BlackRock-Matrix	BlackRock, 40 E. 52nd Street, New York, NY 10022	Warehouse	Commercial Operation	2.97
Segment 1c				
Matrix Bldg A & B	Forsgate Drive CN 4000, Cranbury, NJ 08512	Warehouse	Commercial Operation	2.86
Barringer	Newark Public Schools, 2 Cedar Street, Newark NJ 07102-3051	Public Schools	Commercial Operation	0.65
Park	Newark Public Schools, 2 Cedar Street, Newark NJ 07102-3051	Public Schools	Commercial Operation	0.51
Camden (NWK)	Newark Public Schools, 2 Cedar Street, Newark NJ 07102-3051	Public Schools	Commercial Operation	0.91
New Central HS	Newark Public Schools, 2 Cedar Street, Newark NJ 07102-3051	Public Schools	Commercial Operation	0.50
Segment 2				
Pole-Attached	80 Park Plaza, Newark, NJ 07102	Utility	Comm Op / Ongoing Construc	38.43

Solar 4 All Monthly Activity Report - August 2014

Site	Equipment installed (Inverters; Panels)
Segment 1a	
Linden	Six Sunny Central SC500-HE-US inverters; 7,766 Suntech STP280-24/Vd, 3,718 STP275-24/Vd panels
Yardville	Eight Advanced Energy Solaron 3159500-0001A2 inverters, one Solaron 250 inverters; 5,640 Suntech STP270-24/VD, 4,368 STP275-24/VD, 1,512 STP280-24/VD panels
Silver Lake	Three SMA Sunny Central SC 500U, one SC 250U inverters; 3,514 Sharp ND-224UC1, 5,236 ND-U235F1
Trenton	Three Satcon PowerGate Plus PVS-500 inverters; 5,496 Yingli Solar YL230b-29b panels
Central HQ	One Satcon PowerGate Plus PVS-135, one PVS-250, one PVS-375 inverters; 4,180 Solyndra SL-001-182U, 648 Solar World SW240MONO panels
Edison Training	One Satcon PowerGate Plus PVS-500, one PVS-135 inverters; 3,164 Gloria Solar GSM6-225D-E1 panels
Thorofare	One Advanced Energy Solaron-500kW, one Solaron-250kW inverters; 2,618 SunTech STP275-24Vd panels
Hackensack	Two Advanced Energy Solaron-500kW, 4,472 MX Solar MX-60-235 panels
Metro/Clifton	Four Satcon Powergate Plus PVS-75, two PVS-135 inverters; 3,122 Gloria Solar GSM6-235D-E1 panels
S. DivHQ Moorestown	Three Advanced Energy PVP 260 Inverters; one PVP 100 and one PVP 50 Inverter. 4,563 MX60-235 panels
Segment 1b	
CPP Bayonne	Three SMA SC500U inverters; 7,938 Trina Solar TSM-220PA05 panels
Matrix - Stults Rd	Five Solaron 3159500-1001AD inverters; 12,684 Kyocera K0235GX-LPB panels
Rider	Two AEI inverters; 2,640 Suntech STP-280 panels
NJMC / Kearny Landfill	Seven Advanced Energy Solaron inverters 2x500kW, 3x333kW, 2x250kW; 12,506 Kyocera KD240GX-LFB panels
Mill Creek	Seven SMA America SC500U inverters; 29,400 Solar Frontier SF-130-L panels
Food Bank	Two Advanced Energy Solaron 500kW inverters; 4,667 Trina Solar TSM-230PA05 panels
Raritan Center	Four SMA Sunny Central 600US, One SMA SB8000US inverters; 7,098 Hyundai HIS-M230SG, 2,604 HIS-M227SG panels
BlackRock-Matrix	Five AE Solaron 3159000-1001AJ inverters; 12,376 Upsolar UP-M240P panels
Segment 1c	
Matrix Bldg A & B	Five SMA SC500U inverters; 10,395 Suntech STP275-24VD panels
Barringer	Two Satcon PowerGate Plus PVS-250, one PVS-135 inverters; 2,310 Suntech STP280-24VB-1 panels
Park	One Satcon PowerGate Plus PVS-375, one PVS-100, one PVS-75 inverters; 1,440 Sunpower PL-SUN-SPR-305-U, 264 Suntech STP270-24/VB-1 panels
Camden (NWK)	One Solaron 3159000-1000 A1, one Solaron 3159000-1000 A1; 3,264 ET Solar ET-P672280 panels
New Central HS	Two Satcon PowerGate Plus PVS-100, three Satcon Solstice SDMSO100480-LNIU inverters; 1,857 Suntech STP270-24/VB-1 panels
Segment 2	
Pole-Attached	Suntech STP200-18/UB-1, STP205-18/UD, STP210-18/UB-1, STP215-20/WD, STP220-20/WD, STP225-20/WD, Trina Solar TSM-220PA05, TSM-225PA05, TSM-235PA05, TSM-240PA05

Solar 4 All Monthly Activity Report - August 2014

August 2014 Monthly Update

Segment	Energy Produced (MWh AC)	Net Energy Sales (\$)	SREC's Sold	SREC Revenue (\$)	Capacity Sold (MW-days)	Net Capacity Sales (\$)	Business Interruption Insurance Recovery (\$)	Investment (\$)	Program Expenses (\$)	Projects Completed / Seg 2 Panels Installed	MW Installed	Pole-attached Units Communicating
Segment 1a	2,238	\$86,367	-	\$0	151.9	\$25,606	\$0	\$21,584	\$89,892	0	0.0	
Segment 1b	2,582	\$99,618	-	\$0	182.9	\$23,681	\$0	\$728	\$111,433	0	0.0	
Segment 1c	737	\$28,450	-	\$0	55.8	\$9,793	\$0	\$0	\$63,897	0	0.0	
Segment 2	4,046	\$156,114	-	\$0	341.0	\$71,509	\$0	\$268,755	\$452,484	0	0.00	162,927
Program Total	9,604	\$370,549	-	\$0	731.6	\$130,590	\$0	\$291,067	\$717,707		-	

Solar 4 All Year-to-Date Activity Report

Year-to-Date Update through August 2014

Segment	Energy Produced (MWh AC)	Net Energy Sales (\$)	SREC's Sold	SREC Revenue (\$)	Capacity Sold (MW-days)	Net Capacity Sales (\$)	Business Interruption Insurance Recovery (\$)	Investment (\$)	Program Expenses (\$)	Projects Completed / Seg 2 Panels Installed	MW Installed
Segment 1a	14,106	\$800,215	9,254	\$1,684,302	1,190.7	\$208,532	\$0	\$419,421	\$1,324,796	0	0.0
Segment 1b	17,236	\$1,031,671	11,103	\$2,020,656	1,388.4	\$133,456	\$0	(\$12,786)	\$1,250,148	0	0.0
Segment 1c	4,630	\$263,472	2,723	\$494,184	437.4	\$83,667	\$0	\$54,192	\$518,770	0	0.0
Segment 2	28,864	\$1,865,178	20,866	\$3,813,163	2,657.9	\$477,455	\$0	\$801,242	\$2,849,784	0	0.0
YTD Program Total	64,835	\$3,960,535	43,946	\$8,012,305	5,674.4	\$903,110	\$0	\$1,262,069	\$5,943,498		-

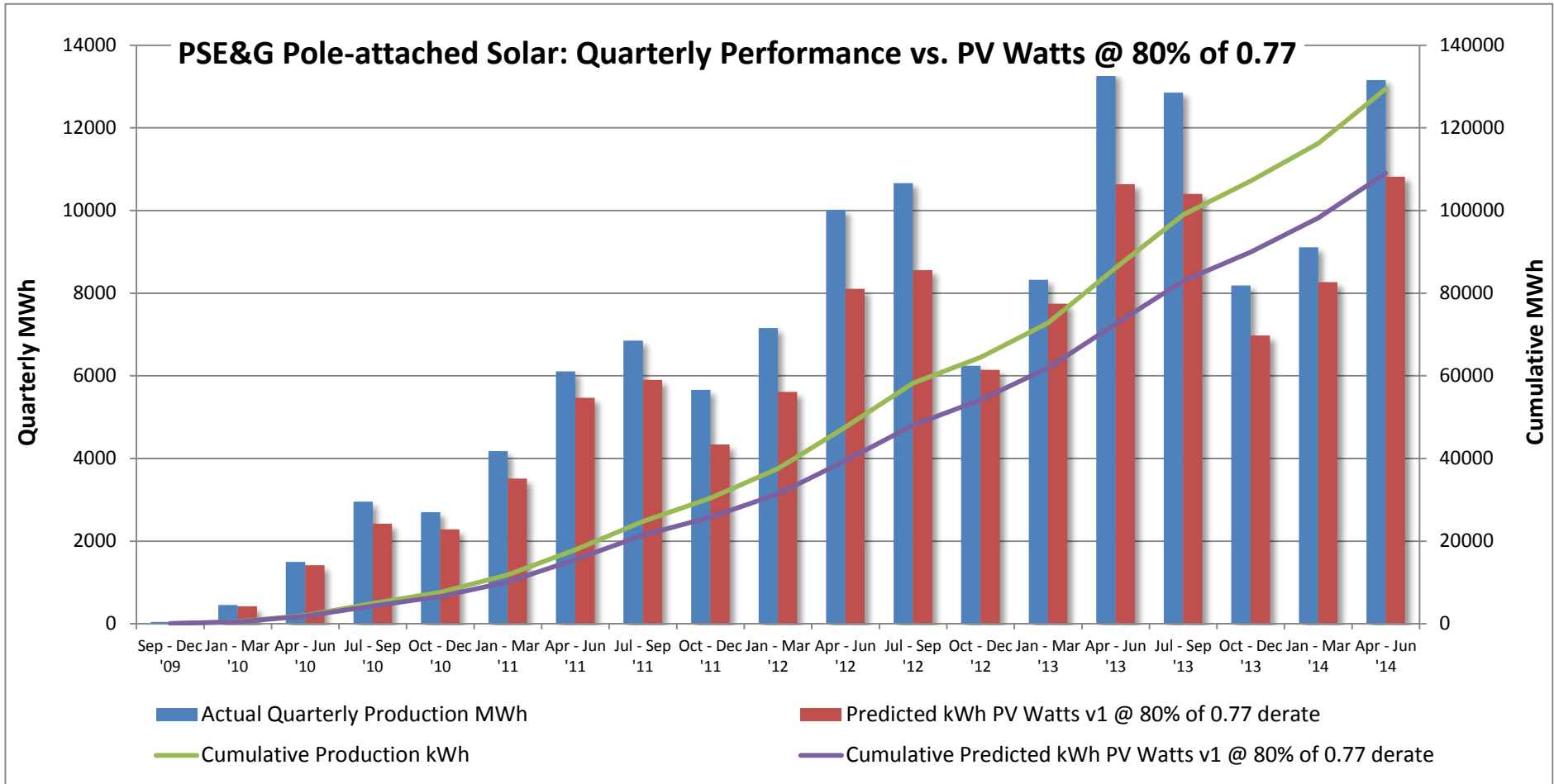
Solar 4 All Program-to-Date Activity Report

Program-to-Date through August 2014

Segment	Energy Produced (MWh AC)	Net Energy Sales (\$)	SREC's Sold	SREC Revenue (\$)	Capacity Sold (MW-days)	Net Capacity Sales (\$)	Business Interruption Insurance Recovery (\$)	Investment (\$)	Program Expenses (\$)	Projects Completed / Seg 2 Panels Installed	MW Installed
Segment 1a	62,233	\$3,125,734	56,129	\$10,381,678	5,163.2	\$560,821	\$320,277	\$89,851,025	\$4,796,463	10	16.0
Segment 1b	67,150	\$3,284,262	59,165	\$8,642,008	4,704.3	\$252,473	\$193,749	\$75,879,159	\$6,545,683	8	18.6
Segment 1c	23,021	\$1,164,924	21,111	\$3,988,600	2,138.4	\$230,895	\$0	\$30,297,014	\$2,827,207	6	5.4
Segment 2	110,311	\$5,622,905	116,897	\$22,628,687	10,544.3	\$1,148,285	\$0	\$270,972,676	\$9,356,446	174,346	38.4
Program-to-date Total	262,714	\$13,197,825	253,302	\$45,640,973	22,550.2	\$2,192,474	\$514,026	\$466,999,874	\$23,525,799		78.4

Notes:

- "SREC's Sold" and "SREC Revenue" includes vintage year 2011 through 2014 SRECs
- "Net Energy Sales" and "Net Capacity Sales" are tied to calendar month sales reported. These values may not tie to the amounts recorded for financial reporting due to timing of PJM invoices. Net Energy Sales for monthly, YTD, and PTD figures include South Jersey Energy Sales.
- Monthly "Pole-attached Units Installed" & "Pole-attached MW Installed" are preliminary estimates and subject to change. Adjustments to prior months will be reflected in YTD values. Capacity specified in certain previously filed capacity reports represented gross installed capacity. The values shown in the table above account for net installed capacity (total installs minus total removals).
- "Pole Attached Units Communicating" represents the *average, daily* number of panels that communicated during the month.
- The columns "Energy Produced" and "SRECs Sold" do not sync because of the timing of SREC auctions, through which SRECs are sold.
- Business interruption insurance recovery received for lost energy sales and SREC sales due to Superstorm Sandy



Seg1 (Plants):

- Overall performance was favorable for August
- Bayonne Roof Solar - Approximately 21% of facility offline while building owner completes repairs for partial roof failure.

Seg2 (Pole Attached Solar):

- Development of communications network continues.
- Ongoing maintenance of existing installations continues.

PSE&G Pole-Attached -- Summary by Municipality --August 2014		
Municipality	Total Installed	Total kWdc
Allentown Boro	49	10.52
Audubon Boro	479	101.92
Audubon Park Boro	41	8.45
Barrington Boro	348	73.15
Bayonne City	1,675	381.2
Belleville Twp	841	196.06
Bellmawr Boro	1001	214.71
Bergenfield Boro	437	98.59
Berkeley Heights Twp	5	1.2
Beverly City	264	55.58
Bloomfield Twp	1,055	249.1
Bogota Boro	209	49.22
Bordentown City	69	14.73
Bordentown Twp	797	170.12
Bound Brook Boro	409	93.61
Branchburg Twp	23	2.16
Bridgewater Twp	1,671	373.41
Brooklawn Boro	225	47.35
Burlington City	1,194	253.01
Burlington Twp	1,207	251.02
Caldwell Boro	201	47.5
Camden City	5,554	1,190.21
Carlstadt Boro	670	156.79
Carteret Boro	1,555	332.06
Cedar Grove Twp	570	133.76
Cherry Hill Twp	3,067	651.28
Chesterfield Twp	367	78.46
Cinnaminson Twp	1,208	252.76
Clark Twp	604	134.73
Cliffside Park Boro	288	68.14
Clifton City	3,062	714.87
Collingswood Boro	693	146.4
Cranbury Twp	295	64.37
Cranford Twp	690	154.72
Cresskill Boro	2	0.44
Delanco Twp	294	60.92
Delran Twp	577	118.86
Deptford Twp	1,690	366.25
Dumont Boro	424	94.86
Dunellen Boro	292	65.52
East Amwell Twp	2	0.41
East Brunswick Twp	1,637	354.34
East Newark Boro	37	8.22
East Orange City	1,309	308.76
East Rutherford Boro	441	103.04
Eastampton Twp	313	65.22
Edgewater Boro	110	25.67
Edgewater Park Twp	509	104.68
Edison Twp	4,483	971.66
Elizabeth City	3,214	700.44
Elizabeth City	251	55.36

*Latest installation date 8/20/14

*Installs pending municipal data updates
not included in total

Count of Panels by Municipality

*Net of removals

Panel Report

Page 7 of 16

PSE&G Pole-Attached -- Summary by Municipality --August 2014		
Municipality	Total Installed	Total kWdc
Allentown Boro	49	10.52
Elmwood Park Boro	739	169.67
Emerson Boro	272	60.7
Englewood City	795	183.67
Englewood Cliffs Boro	261	61.85
Essex Fells Twp	59	13.94
Evesham Twp	759	161.16
Ewing Twp	2,379	511.32
Fair Lawn Boro	1,019	226.85
Fairfield Twp Ess	1,013	236.88
Fairview Boro	250	58.6
Fanwood Boro	251	57.5
Fieldsboro Boro	64	14.17
Florence Twp	728	149.09
Fort Lee Boro	658	154.49
Franklin Twp Som	2,675	577.43
Franklin Twp Som	85	19.27
Garfield City	588	136.99
Garwood Boro	239	54.24
Glen Ridge Boro	16	3.84
Glen Rock Boro	144	32.46
Gloucester City	781	166.76
Gloucester Twp	1,699	365.96
Green Brook Twp	294	66.3
Guttenberg Town	25	5.52
Hackensack City	1,415	328
Haddon Heights Boro	356	78.66
Haddon Twp	925	197.99
Haddonfield Boro	146	32.91
Hainesport Twp	437	91.25
Haledon Boro	118	26.55
Hamilton Twp Mer	6,386	1,371.48
Harrison Town	271	61.38
Hasbrouck Heights	367	85.99
Haworth Boro	35	8.04
Hawthorne Boro	424	93.55
Highland Park Boro	432	94.98
Hillsborough Twp	1,632	358.82
Hillsborough Twp	1	0.21
Hillsdale Boro	18	4.23
Hillside Twp	667	146.7
Hillside Twp	3	0.62
Hi-Nella Boro	53	11.35
Hoboken City	284	67.05
Hohokus Boro	34	7.56
Hopewell Boro	70	16.4
Hopewell Twp Mer	466	102.68
Irvington Town	1,093	243.24
Jersey City	4,030	916.07
Kearny Town	0	0
Kearny Town	1,275	286.25

*Latest installation date 8/20/14

*Installs pending municipal data updates
not included in total

Count of Panels by Municipality

*Net of removals

Panel Report

Page 8 of 16

PSE&G Pole-Attached -- Summary by Municipality --August 2014		
Municipality	Total Installed	Total kWdc
Allentown Boro	49	10.52
Kenilworth Boro	318	70.77
Lawnside Boro	260	56.1
Lawrence Twp Mer	1,424	307.19
Leonia Boro	182	42.64
Lincoln Park Boro	5	1.15
Linden City	2,616	555.17
Little Falls Twp	424	98.92
Little Ferry Boro	452	104.47
Livingston Twp	441	104.39
Lodi Boro	640	148.26
Lumberton Twp	413	85.62
Lyndhurst Twp	880	204.69
Magnolia Boro	398	88.87
Mansfield Twp Bur	550	113.12
Manville Boro	582	131.38
Maple Shade Twp	1,211	254.26
Maplewood Twp	355	79.77
Maywood Boro	212	49.78
Medford Lakes Boro	31	6.54
Medford Twp	559	115.49
Merchantville Boro	197	42.23
Metuchen Boro	527	116.45
Middlesex Boro	927	206.36
Midland Park Boro	80	18.87
Millburn Twp	2	0.48
Millstone Boro	29	6.3
Milltown Boro	5	1.15
Monroe Twp Mid	3	0.63
Montclair Twp	727	173.37
Montgomery Twp	19	4.25
Montgomery Twp	733	161.22
Moonachie Boro	363	82.79
Moorestown Twp	1,006	212.46
Mount Ephraim Boro	344	73.04
Mount Holly Twp	545	115.2
Mount Laurel Twp	1,008	210.64
Mountainside Boro	299	68.74
National Park Boro	349	76.3
New Brunswick City	1,666	355.67
New Milford Boro	290	65.67
Newark City	7,603	1,704.13
North Arlington Boro	517	119.47
North Bergen Twp	1,257	293.76
North Brunswick Twp	1,758	381.52
North Caldwell Twp	176	40.67
North Haledon Boro	48	11.08
North Hanover Twp	0	0
North Plainfield Boro	573	128.91
Nutley Town	555	130.72
Oaklyn Boro	274	57.82

*Latest installation date 8/20/14

*Installs pending municipal data updates
not included in total

Count of Panels by Municipality

*Net of removals

Panel Report

Page 9 of 16

PSE&G Pole-Attached -- Summary by Municipality --August 2014		
Municipality	Total Installed	Total kWdc
Allentown Boro	49	10.52
Old Tappan Boro	11	2.64
Oradell Boro	99	21.98
Orange City	577	136.85
Palisades Park Boro	417	98.37
Palmyra Boro	418	87.25
Paramus Boro	734	166.01
Park Ridge Boro	0	0
Passaic City	1,034	241.08
Paterson City	3,211	730.43
Paulsboro Boro	6	1.24
Pemberton Twp	107	21.92
Pennington Boro	81	18.86
Pennsauken Twp	3,354	702.82
Perth Amboy City	1,502	325.54
Piscataway Twp	2,501	537.9
Plainfield City	1,548	343.21
Plainsboro Twp	226	49.53
Princeton Boro	49	11.13
Princeton Twp	127	27.72
Prospect Park Boro	109	24.44
Rahway City	1,422	319.71
Raritan Boro	283	61.81
Ridgefield Boro	346	81.15
Ridgefield Park Village	382	90.47
Ridgewood Village	135	30.46
River Edge Boro	262	60.12
River Vale Twp	11	2.42
Riverside Twp	561	116.55
Riverton Boro	108	23.2
Rochelle Park Twp	257	58.85
Rocky Hill Boro	15	3.29
Roseland Boro	141	33.57
Roselle Boro	641	141.21
Roselle Park Boro	306	70.41
Runnemede Boro	532	115.06
Rutherford Boro	218	48.44
Saddle Brook Twp	7	1.63
Saddle Brook Twp	305	69.52
Saddle River Boro	9	1.92
Scotch Plains Twp	653	148.22
Secaucus Town	1002	233.44
Somerdale Boro	379	81.82
Somerville Boro	721	157.58
South Bound Brook Boro	197	43.32
South Brunswick Twp	1,313	284.94
South Brunswick Twp	451	97.05
South Hackensack Twp	222	51.73
South Orange Village Twp	96	22.77
South Plainfield Boro	2,169	477.45
Southampton Twp	691	141.35

*Latest installation date 8/20/14

*Installs pending municipal data updates
not included in total

Count of Panels by Municipality

*Net of removals

Panel Report
Page 10 of 16

PSE&G Pole-Attached -- Summary by Municipality --August 2014		
Municipality	Total Installed	Total kWdc
Allentown Boro	49	10.52
Springfield Twp Bur	468	97.36
Springfield Twp Uni	29	6.61
Tavistock Boro	1	0.22
Teaneck Twp	721	165.26
Tenafly Boro	307	70.1
Teterboro Boro	170	39.87
Totowa Boro	725	165.99
Trenton City	4,659	1013.79
Union City	27	6.28
Union Twp Uni	2,048	453.85
Upper Freehold Twp	76	16.26
Verona Twp	184	43.96
Voorhees Twp	307	66.86
Waldwick Boro	162	36.28
Wallington Boro	274	63.92
Wallington Boro	5	1.17
Warren Twp	50	10.51
Washington Twp Ber	86	18.91
Washington Twp Glo	37	8
Washington Twp Mer	352	75.04
Watchung Boro	328	72.99
Wayne Twp	1,298	296.61
Weehawken Twp	3	0.72
West Caldwell Twp	512	120.98
West Deptford Twp	1	0.2
West Deptford Twp	1,671	359.7
West New York Town	31	7.02
West Orange Twp	1,032	241.38
West Paterson Boro	303	69.83
West Windsor Twp	649	141.52
Westampton Twp	434	90.99
Westfield Town	1,139	258.87
Westville Boro	514	108.78
Westwood Boro	222	48.94
Willingboro Twp	656	133.37
Winfield Twp	15	3.07
Woodbridge Twp	5,639	1,212.39
Woodbury City	923	200.91
Woodbury Heights Boro	271	58.81
Woodcliff Lake Boro	67	15.78
Woodlynne Boro	148	31.15
Wood-Ridge Boro	337	79.44
Wyckoff Twp	49	11.2
Total	173,848	38318.18

*Latest installation date 8/20/14

*Installs pending municipal data updates
not included in total

Count of Panels by Municipality

*Net of removals

Panel Report

Page 11 of 16

PSE&G Pole-Attached -- Count of Aggregators by Municipality -- August 2014

Municipality	Count of Aggregators Installed through May 2014
Allentown Boro	3
Audubon Boro	7
Barrington Boro	7
Bayonne City	23
Belleville Twp	12
Bellmawr Boro	19
Bergenfield Boro	6
Beverly City	3
Bloomfield Twp	15
Bogota Boro	3
Bordentown City	2
Bordentown Twp	13
Bound Brook Boro	6
Branchburg Twp	1
Bridgewater Twp	44
Brooklawn Boro	4
Burlington City	17
Burlington Twp	17
Caldwell Boro	3
Camden City	66
Carlstadt Boro	12
Carteret Boro	20
Cedar Grove Twp	8
Cherry Hill Twp	57
Chesterfield Twp	14
Cinnaminson Twp	19
Clark Twp	11
Cliffside Park Boro	3
Clifton City	40
Collingswood Boro	10
Cranbury Twp	7
Cranford Twp	11
Delanco Twp	3
Delran Twp	10
Deptford Twp	32
Dumont Twp	6
Dunellen Boro	4
East Brunswick Twp	33
East Newark Boro	1
East Orange City	16
East Rutherford Twp	7
Eastampton Twp	6
Edgewater Boro	6
Edgewater Park Twp	7
Edison Twp	79
Elizabeth City	43
Elmwood Park Boro	11
Emerson Boro	7
Englewood City	17
Englewood Cliffs Boro	5

PSE&G Pole-Attached -- Count of Aggregators by Municipality -- August 2014

Municipality	Count of Aggregators Installed through May 2014
Essex Fells Twp	2
Evesham Twp	14
Ewing Twp	36
Fair Lawn Boro	17
Fairfield Twp Ess	18
Fairview Boro	5
Fanwood Boro	5
Fieldsboro Boro	1
Florence Twp	12
Fort Lee Boro	12
Franklin Twp Som	61
Garfield City	10
Garwood Boro	3
Glen Rock Boro	7
Gloucester City	10
Gloucester Twp	22
Green Brook Twp	6
Guttenberg Town	1
Hackensack City	23
Haddon Heights Boro	4
Haddon Twp	13
Haddonfield Boro	6
Hainesport Twp	3
Haledon Boro	1
Hamilton Twp Mer	85
Harrison Town	5
Hasbrouck Heights	4
Haworth Boro	1
Hawthorne Boro	10
Highland Park Boro	9
Hillsborough Twp	37
Hillsdale Boro	2
Hillside Twp	11
Hi-Nella Boro	1
Hoboken City	6
Hohokus Boro	3
Hopewell Boro	1
Hopewell Twp Mer	21
Irvington Town	17
Jersey City	62
Kearny Town	18
Kenilworth Boro	5
Lawnside Boro	4
Lawrence Twp Mer	31
Leonia Twp	2
Linden City	36
Little Falls Twp	9
Little Ferry Boro	8
Livingston Twp	24
Lodi Boro	11

*Data available as of 8/20/2014

PSE&G Pole-Attached -- Count of Aggregators by Municipality -- August 2014

Municipality	Count of Aggregators Installed through May 2014
Lumberton Twp	12
Lyndhurst Twp	12
Magnolia Boro	5
Mansfield Twp Bur	16
Manville Boro	9
Maple Shade Twp	13
Maplewood Twp	6
Maywood Boro	7
Medford Lakes Boro	3
Medford Twp	21
Merchantville Boro	1
Metuchen Boro	10
Middlesex Twp	9
Midland Park Boro	7
Millstone Boro	1
Montclair Twp	18
Montgomery Twp	31
Moonachie Boro	5
Moorestown Twp	20
Mount Ephraim Boro	4
Mount Holly Twp	9
Mount Laurel Twp	25
Mountainside Boro	7
National Park Boro	6
New Brunswick City	24
New Milford Boro	5
Newark City	110
North Arlington Boro	9
North Bergen Twp	23
North Brunswick Twp	24
North Caldwell Twp	9
North Haledon Boro	3
North Plainfield Boro	7
Nutley Town	8
Oaklyn Boro	4
Old Tappan Boro	1
Oradell Boro	3
Orange City	9
Palisades Park Boro	6
Palmyra Boro	7
Paramus Boro	22
Passaic City	16
Paterson City	49
Pemberton Twp	5
Pennington Boro	4
Pennsauken Twp	50
Perth Amboy City	26
Piscataway Twp	49
Plainfield City	26
Plainsboro Twp	9

*Data available as of 8/20/2014

PSE&G Pole-Attached -- Count of Aggregators by Municipality -- August 2014

Municipality	Count of Aggregators Installed through May 2014
Princeton Boro	5
Princeton Twp	6
Prospect Park Boro	1
Rahway City	17
Raritan Boro	5
Ridgefield Boro	4
Ridgefield Park Village	5
Ridgewood Village	9
River Edge Boro	5
River Vale Twp	1
Riverside Boro	5
Riverton Boro	2
Rochelle Park Twp	5
Rocky Hill Boro	2
Roseland Boro	10
Roselle Boro	11
Roselle Park Boro	5
Runnemede Boro	8
Rutherford Boro	8
Saddle Brook Twp	7
Scotch Plains Twp	14
Secaucus Town	17
Somerdale Boro	5
Somerville Boro	8
South Bound Brook Boro	2
South Brunswick Twp	43
South Hackensack Twp	3
South Orange Village Twp	5
South Plainfield Boro	42
Southampton Twp	19
Springfield Twp Bur	12
Teaneck Twp	17
Tenafly Boro	13
Teterboro Boro	3
Totowa Boro	12
Trenton City	51
Undefined Municipality	0
Union City	2
Union Twp Uni	29
Upper Freehold Twp	2
Verona Twp	3
Voorhees Twp	6
Waldwick Boro	10
Wallington Boro	2
Warren Twp	4
Washington Twp Ber	6
Washington Twp Glo	1
Washington Twp Mer	6
Watchung Boro	13
Wayne Twp	55

PSE&G Pole-Attached -- Count of Aggregators by Municipality -- August 2014

Municipality	Count of Aggregators Installed through May 2014
West Caldwell Twp	8
West Deptford Twp	28
West New York Town	2
West Orange Twp	26
West Paterson Boro	9
West Windsor Twp	21
Westampton Twp	10
Westfield Town	26
Westville Boro	5
Westwood Boro	5
Willingboro Twp	16
Woodbridge Twp	92
Woodbury City	13
Woodbury Heights Boro	3
Woodcliff Lakes Boro	4
Woodlynne Boro	2
Wood-Ridge Boro	4
Wyckoff Twp	5
<i>TOTAL</i>	3,061