



# Local Government Energy Audit: Energy Audit Report



Copyright ©2018 TRC Energy Services. All rights reserved.

Reproduction or distribution of the whole, or any part of the contents of this document without written permission of TRC is prohibited. Neither TRC nor any of its employees makes any warranty, express or implied, or assumes any legal liability or responsibility for the accuracy, completeness, or usefulness of any data, information, method, product or process disclosed in this document, or represents that its use will not infringe upon any privately-owned rights, including but not limited to, patents, trademarks or copyrights.

## ***Treatment Facility #6 and Well #11 (Western Service Area)***

350 Schoolhouse Road

Whiting, NJ 08759

Manchester Township

July 18, 2018

Final Report by:

**TRC Energy Services**

## Disclaimer

---

The intent of this energy analysis report is to identify energy savings opportunities and recommend upgrades to the facility's energy using equipment and systems. Approximate savings are included in this report to help make decisions about reducing energy use at the facility. This report, however, is not intended to serve as a detailed engineering design document. Further design and analysis may be necessary in order to implement some of the measures recommended in this report.

The energy conservation measures and estimates of energy savings have been reviewed for technical accuracy. However, estimates of final energy savings are not guaranteed, because final savings may depend on behavioral factors and other uncontrollable variables. TRC Energy Services (TRC) and New Jersey Board of Public Utilities (NJBPU) shall in no event be liable should the actual energy savings vary.

Estimated installation costs are based on TRC's experience at similar facilities, pricing from local contractors and vendors, and/or cost estimates from *RS Means*. The owner of the facility is encouraged to independently confirm these cost estimates and to obtain multiple estimates when considering measure installations. Since actual installed costs can vary widely for certain measures and conditions, TRC and NJBPU do not guarantee installed cost estimates and shall in no event be held liable should actual installed costs vary from estimates.

New Jersey's Clean Energy Program (NJCEP) incentive values provided in this report are estimates based on program information available at the time of the report. Incentive levels are not guaranteed. The NJBPU reserves the right to extend, modify, or terminate programs without prior notice. The owner of the facility should review available program incentives and eligibility requirements prior to selecting and installing any energy conservation measures.

# Table of Contents

---

<b>1</b>	<b>Executive Summary.....</b>	<b>1</b>
1.1	Facility Summary .....	1
1.2	Your Cost Reduction Opportunities.....	1
	Energy Conservation Measures.....	1
	Energy Efficient Practices .....	3
	On-Site Generation Measures.....	3
1.3	Implementation Planning .....	4
<b>2</b>	<b>Facility Information and Existing Conditions .....</b>	<b>5</b>
2.1	Project Contacts .....	5
2.2	General Site Information.....	5
2.3	Building Occupancy .....	5
2.4	Building Envelope .....	6
2.5	On-Site Generation.....	6
2.6	Energy-Using Systems .....	6
	Motors .....	6
	Lighting System .....	6
	Air Conditioning System .....	7
2.7	Water-Using Systems .....	7
<b>3</b>	<b>Site Energy Use and Costs.....</b>	<b>8</b>
3.1	Total Cost of Energy .....	8
3.2	Electricity Usage .....	9
3.3	Benchmarking.....	10
3.4	Energy End-Use Breakdown .....	11
<b>4</b>	<b>Energy Conservation Measures .....</b>	<b>12</b>
4.1	Recommended ECMs .....	12
4.1.1	Lighting Upgrades.....	13
	ECM 1: Install LED Fixtures .....	13
	ECM 2: Retrofit Fixtures with LED Lamps .....	14
4.1.2	Lighting Control Measures .....	15
	ECM 3: Install Occupancy Sensor Lighting Controls .....	15
<b>5</b>	<b>Energy Efficient Practices .....</b>	<b>16</b>
	Reduce Air Leakage .....	16
	Close Doors and Windows .....	16
	Ensure Lighting Controls Are Operating Properly .....	16
	Perform Routine Motor Maintenance .....	16
	Practice Proper Use of Thermostat Schedules and Temperature Resets .....	16
	Plug Load Controls.....	17
	Replace Computer Monitors .....	17
	Water Conservation .....	17
<b>6</b>	<b>On-Site Generation Measures .....</b>	<b>18</b>

---

6.1	Photovoltaic.....	18
6.2	Combined Heat and Power .....	20
<b>7</b>	<b>Demand Response .....</b>	<b>21</b>
<b>8</b>	<b>Project Funding / Incentives .....</b>	<b>22</b>
8.1	SmartStart .....	23
8.2	SREC Registration Program.....	24
8.3	Energy Savings Improvement Program .....	25
<b>9</b>	<b>Energy Purchasing and Procurement Strategies .....</b>	<b>26</b>
9.1	Retail Electric Supply Options.....	26
9.2	Retail Natural Gas Supply Options .....	26

## Appendix A: Equipment Inventory & Recommendations

## Table of Figures

---

Figure 1 – Previous 12 Month Utility Costs.....	2
Figure 2 – Potential Post-Implementation Costs .....	2
Figure 3 – Summary of Energy Reduction Opportunities .....	2
Figure 4 – Project Contacts .....	5
Figure 5 - Building Schedule.....	5
Figure 6 - Utility Summary .....	8
Figure 7 - Energy Cost Breakdown .....	8
Figure 8 - Electric Usage & Demand.....	9
Figure 9 - Electric Usage & Demand.....	9
Figure 10 - Energy Use Intensity Comparison – Existing Conditions.....	10
Figure 11 - Energy Use Intensity Comparison – Following Installation of Recommended Measures .....	10
Figure 12 - Energy Balance (kBtu/SF).....	11
Figure 13 – Summary of Recommended ECMs.....	12
Figure 14 – Summary of Lighting Upgrade ECMs.....	13
Figure 15 – Summary of Lighting Control ECMs .....	15
Figure 16 - Photovoltaic Screening .....	19
Figure 17 - ECM Incentive Program Eligibility .....	22

# I EXECUTIVE SUMMARY

---

The New Jersey Board of Public Utilities (NJBPB) has sponsored this Local Government Energy Audit (LGEA) Report for Treatment Facility #6 and Well #11 (Western Service Area).

The goal of an LGEA report is to provide you with information on how your facility uses energy, identify energy conservation measures (ECMs) that can reduce your energy use, and provide information and assistance to help facilities implement ECMs. The LGEA report also contains valuable information on financial incentives from New Jersey's Clean Energy Program (NJCEP) for implementing ECMs.

This study was conducted by TRC Energy Services (TRC), as part of a comprehensive effort to assist New Jersey local governments in controlling energy costs and protecting our environment by offering a wide range of energy management options and advice.

## I.1 Facility Summary

Treatment Facility #6 and Well #11 (Western Service Area) is a 3,862 square foot facility which consists of office spaces, sample and testing rooms, and water treatment equipment. The site also hosts six filters which are used to pre-treat and clean water from Well #11. Treated water is stored in an elevated storage tank and distributed throughout the township as needed.

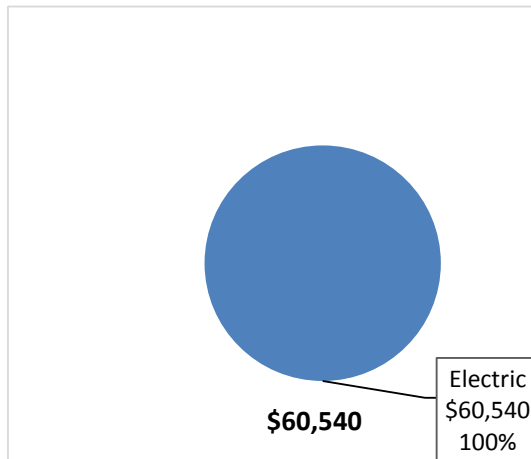
Lighting at Treatment Facility #6 and Well #11 (Western Service Area) consists of older and inefficient T12 and T8 fixtures controlled by wall switches on the interior. Exterior lights consist of a few metal halide and incandescent fixture. The exterior lights are controlled via photo cells. Air conditioning is limited to the treatment room and office area which is served by a mini-split heat pump. Heating throughout the rest of the facility is provided by electric resistance heaters controlled by manual thermostats. A thorough description of the facility and our observations are located in Section 2.

## I.2 Your Cost Reduction Opportunities

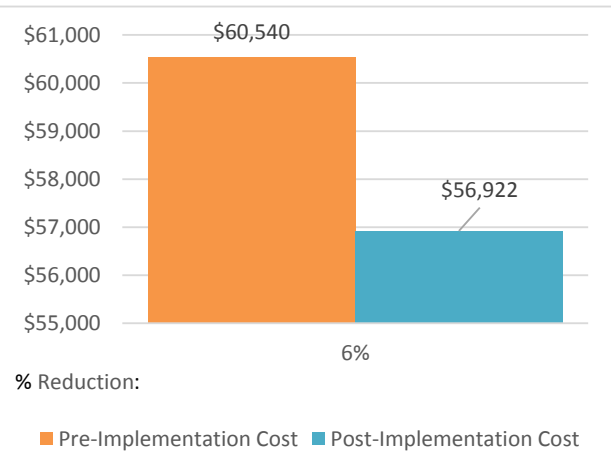
### Energy Conservation Measures

TRC evaluated three measures which together represent an opportunity for Treatment Facility #6 and Well #11 (Western Service Area) to reduce annual energy costs by \$3,618 and annual greenhouse gas emissions by 28,953 lbs CO<sub>2</sub>e. We estimate that if all measures were implemented as recommended, the project would pay for itself in 10.4 years. The breakdown of existing and potential utility costs after project implementation are illustrated in Figure 1 and Figure 2, respectively. Together these measures represent an opportunity to reduce Treatment Facility #6 and Well #11 (Western Service Area)'s annual energy use by 6%.

**Figure 1 – Previous 12 Month Utility Costs**



**Figure 2 – Potential Post-Implementation Costs**



A detailed description of Treatment Facility #6 and Well #11 (Western Service Area)'s existing energy use can be found in Section 3.

Estimates of the total cost, energy savings, and financial incentives for the proposed energy efficient upgrades are summarized below in Figure 3. A brief description of each category can be found below and a description of savings opportunities can be found in Section 4.

**Figure 3 – Summary of Energy Reduction Opportunities**

Energy Conservation Measure		Recommend?	Annual Electric Savings (kWh)	Peak Demand Savings (kW)	Annual Energy Cost Savings (\$)	Estimated Install Cost (\$)	Estimated Incentive (\$)*	Estimated Net Cost (\$)	Simple Payback Period (yrs)**	CO <sub>2</sub> e Emissions Reduction (lbs)
<b>Lighting Upgrades</b>			<b>25,755</b>	<b>2.5</b>	<b>\$3,240.87</b>	<b>\$7,337.55</b>	<b>\$1,130.00</b>	<b>\$6,207.55</b>	<b>1.9</b>	<b>25,935</b>
ECM 1	Install LED Fixtures	Yes	11,550	1.3	\$1,453.36	\$4,780.15	\$700.00	\$4,080.15	2.8	11,631
ECM 2	Retrofit Fixtures with LED Lamps	Yes	14,205	1.2	\$1,787.51	\$2,557.41	\$430.00	\$2,127.41	1.2	14,305
<b>Lighting Control Measures</b>			<b>2,997</b>	<b>0.2</b>	<b>\$377.13</b>	<b>\$1,620.00</b>	<b>\$210.00</b>	<b>\$1,410.00</b>	<b>3.7</b>	<b>3,018</b>
ECM 3	Install Occupancy Sensor Lighting Controls	Yes	2,997	0.2	\$377.13	\$1,620.00	\$210.00	\$1,410.00	3.7	3,018
<b>Variable Frequency Drive (VFD) Measures</b>			<b>0</b>	<b>0.0</b>	<b>\$0.00</b>	<b>\$30,000.00</b>	<b>\$0.00</b>	<b>\$30,000.00</b>	<b>0.0</b>	<b>0</b>
<b>TOTALS</b>			<b>28,752</b>	<b>2.7</b>	<b>\$3,618</b>	<b>\$38,958</b>	<b>\$1,340</b>	<b>\$37,618</b>	<b>10.4</b>	<b>28,953</b>

\* - All incentives presented in this table are based on NJ Smart Start Building equipment incentives and assume proposed equipment meets minimum performance criteria for that program.

\*\* - Simple Payback Period is based on net measure costs (i.e. after incentives).

**Lighting Upgrades** generally involve the replacement of existing lighting components such as lamps and ballasts (or the entire fixture) with higher efficiency lighting components. These measures save energy by reducing the power used by the lighting components due to improved electrical efficiency.

**Lighting Controls** measures generally involve the installation of automated controls to turn off lights or reduce light output when not needed. Automated control reduces reliance on occupant behavior for adjusting lights. These measures save energy by reducing the amount of time lights are on.

**Variable Frequency Drives (VFDs)** are motor control devices. These measures control the speed of a motor so that the motor spins at peak efficiency during partial load conditions. Sensors adapt the speed to flow, temperature, or pressure settings which is much more efficient than usage a valve or damper to control flow rates, or running the motor at full speed when only partial power is needed. These measures save energy by controlling motor usage more efficiently.

## **Energy Efficient Practices**

TRC also identified eight low cost (or no cost) energy efficient practices. A facility's energy performance can be significantly improved by employing certain behavioral or operational adjustments and by performing better routine maintenance on building systems. These practices can extend equipment lifetime, improve occupant comfort, provide better health and safety, as well as reduce annual energy and O&M costs. Potential opportunities identified at Treatment Facility #6 and Well #11 (Western Service Area) include:

- Reduce Air Leakage
- Close Doors and Windows
- Ensure Lighting Controls Are Operating Properly
- Perform Routine Motor Maintenance
- Practice Proper Use of Thermostat Schedules and Temperature Resets
- Install Plug Load Controls
- Replace Computer Monitors
- Water Conservation

For details on these energy efficient practices, please refer to Section 5.

## **On-Site Generation Measures**

TRC evaluated the potential for installing on-site generation for Treatment Facility #6 and Well #11 (Western Service Area). Based on the configuration of the site and its loads there is a low potential for installing any PV and combined heat and power self-generation measures.

For details on our evaluation and on-site generation potential, please refer to Section 6.

### I.3 Implementation Planning

To realize the energy savings from the ECMs listed in this report, a project implementation plan must be developed. Available capital must be considered and decisions need to be made whether it is best to pursue individual ECMs separately, groups of ECMs, or a comprehensive approach where all ECMs are implemented together, possibly in conjunction with other facility upgrades or improvements.

Rebates, incentives, and financing are available from NJCEP, as well as other sources, to help reduce the costs associated with the implementation of energy efficiency projects. Prior to implementing any measure, please review the relevant incentive program guidelines before proceeding. This is important because in most cases you will need to submit applications for the incentives prior to purchasing materials or commencing with installation.

The ECMs outlined in this report may qualify under the following program(s):

- SmartStart
- SREC (Solar Renewable Energy Certificate) Registration Program (SRP)
- Energy Savings Improvement Program (ESIP)

For facilities wanting to pursue only selected individual measures (or planning to phase implementation of selected measures over multiple years), incentives are available through the SmartStart program. To participate in this program you may utilize internal resources, or an outside firm or contractor, to do the final design of the ECM(s) and do the installation. Program pre-approval is required for some SmartStart incentives, so only after receiving pre-approval should you proceed with ECM installation. The incentive estimates listed above in Figure 3 are based on the SmartStart program. More details on this program and others are available in Section 8.

For larger facilities with limited capital availability to implement ECMs, project financing may be available through the Energy Savings Improvement Program (ESIP). Supported directly by the NJBPU, ESIP provides government agencies with project development, design, and implementation support services, as well as, attractive financing for implementing ECMs. An LGEA report (or other approved energy audit) is required for participation in ESIP. Please refer to Section 8.33 for additional information on the ESIP Program.

The Demand Response Energy Aggregator is a (non-NJCEP) program designed to reduce electric loads at commercial facilities, when wholesale electricity prices are high or when the reliability of the electric grid is threatened due to peak power demand. Demand Response (DR) service providers (a.k.a. Curtailment Service Providers) are registered with PJM, the independent system operator (ISO) for mid-Atlantic state region that is charged with maintaining electric grid reliability. By enabling grid operators to call upon commercial facilities to reduce their electric usage during times of peak demand, the grid is made more reliable and overall transmission costs are reduced for all ratepayers. Curtailment Service Providers provide regular payments to medium and large consumers of electric power for their participation in DR programs. Program participation is voluntary and facilities receive payments whether or not they are called upon to curtail their load during times of peak demand. Refer to Section 7 for additional information on this program.

Additional information on relevant incentive programs is located in Section 8. You may also check the following website for more details: [www.njcleanenergy.com/ci](http://www.njcleanenergy.com/ci).

## 2 FACILITY INFORMATION AND EXISTING CONDITIONS

### 2.1 Project Contacts

*Figure 4 – Project Contacts*

Name	Role	E-Mail	Phone #
<b>Customer</b>			
Joe Veni	Supervising Engineer	jveni@manchestertwp.com	732-65-8121
Jeff Ruerup	Maintenance Supervisor	jrurup@manchestertwp.com	908-963-6242
<b>TRC Energy Services</b>			
Vish Nimbalkar	Auditor	VNaikNimbalkar@trcsolutions.com	(732) 855-0033

### 2.2 General Site Information

On April 17, 2017, TRC performed an energy audit at Treatment Facility #6 and Well #11 (Western Service Area) located in Whiting, New Jersey. TRC's team met with Steve to review the facility operations and help focus our investigation on specific energy-using systems.

Treatment Facility #6 and Well #11 (Western Service Area) is a 3,862 square foot facility which consists of office spaces, sample and testing rooms, and water treatment equipment. The site also hosts six filters which are used to pre-treat and clean water from well (#11). Treated water is stored in an elevated storage tank and distributed throughout the township as needed.

Lighting at Treatment Facility #6 and Well #11 (Western Service Area) consists of older and inefficient T12 and T8 fixtures controlled by wall switches on the interior. Exterior lights consists of a few metal halide and incandescent fixture. The exterior lights are controlled via photo cells. Air conditioning is limited to the treatment room and office area which is served by a mini-split heat pump. Heating throughout the rest of the facility is provided by electric resistance heaters controlled by manual thermostats.

### 2.3 Building Occupancy

The operations office is open Monday through Friday and the treatment facility is open 24 hours a day, all year. The typical schedule is presented in the table below. During a typical day, the facility is occupied by approximately two employees.

*Figure 5 - Building Schedule*

Building Name	Weekday/Weekend	Operating Schedule
Operations Office	Weekday	8:00 AM - 6:00 PM
Operations Office	Weekend	Closed
Treatment Facility	Weekday	12:00 AM - 12:00 AM
Treatment Facility	Weekend	12:00 AM - 12:00 AM

## 2.4 Building Envelope

The building is constructed of concrete block, and structural steel with a cinder block façade. It has a sloped roof finished with asphalt shingles. The building does not have any windows.

The exterior doors for the treatment facility are made of metal, in good condition and show no signs of wear or excessive levels of outside air infiltration. It is recommended that the yearly checks are made on all exterior fenestration, and if needed, weatherization measures should be undertaken on the doors and windows of the facility.



## 2.5 On-Site Generation

Treatment Facility #6 and Well #11 (Western Service Area) has an emergency backup generator

## 2.6 Energy-Using Systems

Please see Appendix A: Equipment Inventory & Recommendations for an inventory of the facility's equipment.

### Motors

The source water for the water storage tank is provided by Well pump #11. The well pump is VFD driven and rated at 1,500 gallons per minute (gpm) and 250 hp. This pump is the primary supply pump for the western service area and hence runs the most amongst other well pumps. Water pumped from Well #11 is pretreated with chemicals – potassium, soda ash, and chlorine– to oxidize the iron molecules which are then removed and stored from the six filter tanks. Following the filtration, the water is treated with chlorine and lime and moved to the storage tank after verifying the PH levels.

In addition to the above equipment there are two 10-hp air pumps to backwash the filters. They are used for an hour every month. The iron water is then pumped into another smaller storage tank where the iron is collected at the bottom and water is pumped back into the system.



### Lighting System

Lighting at the facility is provided mostly by 32-Watt linear fluorescent T8 lamps with electronic ballasts as well as some incandescent lamps. There are also some 40-Watt T12 lamps located in the pump room and filter room. All of the fixtures are 4-foot long troffers with diffusers. Lighting control in most spaces is provided by wall switches.

The building's exterior lighting is minimal and consists primarily of six 150-Watt metal halide and two 60-Watt incandescent fixtures that are controlled by photocells.



## **Air Conditioning System**

Space cooling is only provided to the operations office area and by a single Mitsubishi split system heat pump. The unit has a heating capacity of 15.2 kBTU/hour and a cooling capacity of 1.83 ton. The unit is rated at cooling energy efficiency ratio (EER) of 7.6 and a heating coefficient of performance (COP) of 2.8. The units are controlled by either wall mounted manual thermostats or manual controls located on the units. They are operated all year and are maintained at a constant temperature setpoint between 68F and 72F. Space heating is provided via six electric unit heaters. The heaters are rated at 17 kBTU/hour and are controlled via manual thermostats as needed.

## **2.7 Water-Using Systems**

There is a single restroom at this facility. During the audit it was found that the faucets are rated for 2.0 (gallons per minute) gpm, the toilets are rated at 2.5 gallons per flush (gpf) and the urinals are rated at 1.5 gpf.

### 3 SITE ENERGY USE AND COSTS

Utility data for electricity was analyzed to identify opportunities for savings. In addition, data for electricity was evaluated to determine the annual energy performance metrics for the building in energy cost per square foot and energy usage per square foot. These metrics are an estimate of the relative energy efficiency of this building. There are a number of factors that could cause the energy use of this building to vary from the “typical” energy usage profile for facilities with similar characteristics. Local weather conditions, building age and insulation levels, equipment efficiency, daily occupancy hours, changes in occupancy throughout the year, equipment operating hours, and energy efficient behavior of occupants all contribute to benchmarking scores. Please refer to the Benchmarking section within Section 3.3 for additional information.

#### 3.1 Total Cost of Energy

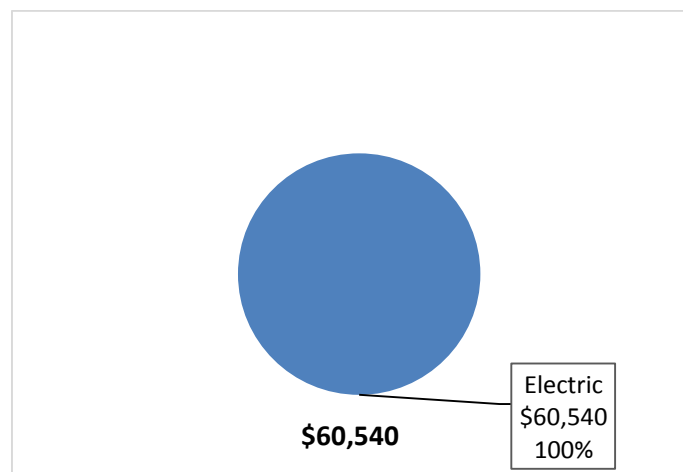
The following energy consumption and cost data is based on the last 12-month period of utility billing data that was provided for each utility. A profile of the annual energy consumption and energy cost of the facility was developed from this information.

*Figure 6 - Utility Summary*

Utility Summary for Treatment Facility #6 and Well #11 (Western Service Area)		
Fuel	Usage	Cost
Electricity	481,109 kWh	\$60,540
Total		\$60,540

The current annual energy cost for this facility is \$60,540 as shown in the chart below.

*Figure 7 - Energy Cost Breakdown*



## 3.2 Electricity Usage

Electricity is provided by JCP&L. The average electric cost over the past 12 months was \$0.126/kWh, which is the blended rate that includes energy supply, distribution, and other charges. This rate is used throughout the analyses in this report to assess energy costs and savings. The monthly electricity consumption and peak demand are shown in the chart below.

Figure 8 - Electric Usage & Demand

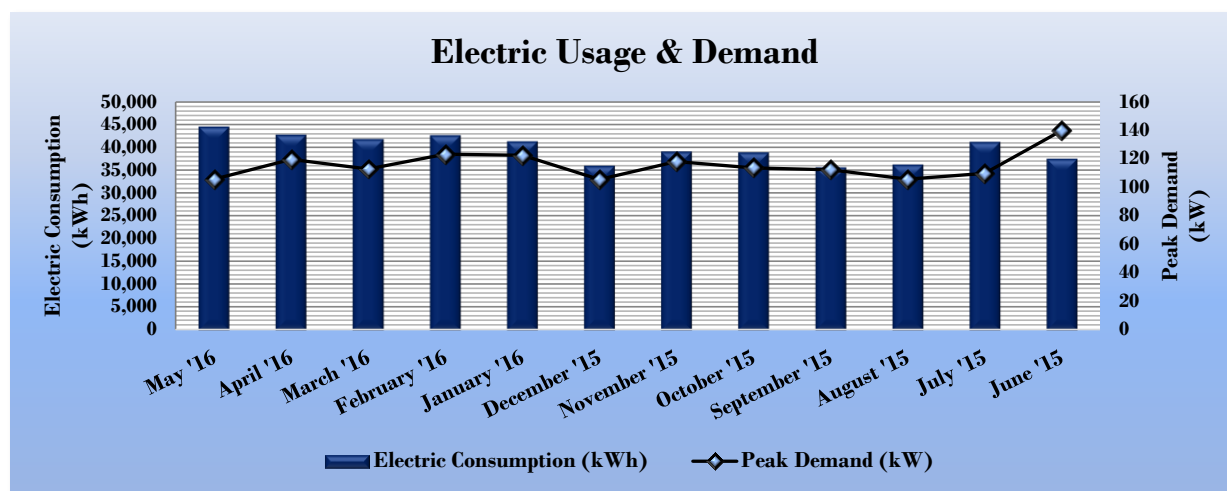


Figure 9 - Electric Usage & Demand

Electric Billing Data for Treatment Facility #6 and Well #11 (Western Service Area)					
Period Ending	Days in Period	Electric Usage (kWh)	Demand (kW)	Demand Cost	Total Electric Cost
5/24/16	28	44,338	105.7		\$5,294
4/25/16	31	42,640	119.6		\$5,373
3/24/16	28	41,645	112.9		\$5,223
2/24/16	27	42,510	123.2		\$5,382
1/27/16	29	41,156	122.5		\$5,188
12/28/15	32	35,846	105.4		\$4,518
11/25/15	39	38,965	118.0		\$4,928
10/26/15	30	38,727	113.6		\$4,883
9/25/15	29	35,503	112.3		\$4,530
8/26/15	29	36,108	105.6		\$4,554
7/27/15	31	41,059	109.8		\$5,122
6/25/15	28	37,340	139.9		\$4,881
<b>Totals</b>	<b>361</b>	<b>475,837</b>	<b>139.9</b>	<b>\$0</b>	<b>\$59,876</b>
<b>Annual</b>	<b>365</b>	<b>481,109</b>	<b>139.9</b>	<b>\$0</b>	<b>\$60,540</b>

### 3.3 Benchmarking

Treatment facilities and wells are not facility types that are eligible to receive an ENERGY STAR® score. The energy use intensity (EUI) would also not be comparable to any other facilities as energy used per square feet would not be an appropriate index to measure the facility performance. The reason being that most of these buildings are less than 1500 square feet and host pumps and a few light fixtures.

The EUI is a measure of a facility's energy consumption per square foot, and it is the standard metric for comparing buildings' energy performance. Comparing the EUI of a building with the national median EUI for that building type illustrates whether that building uses more or less energy than similar buildings of its type on a square foot basis. EUI is presented in terms of "site energy" and "source energy." Site energy is the amount of fuel and electricity consumed by a building as reflected in utility bills. Source energy includes fuel consumed to generate electricity consumed at the site, factoring in electric production and distribution losses for the region.

**Figure 10 - Energy Use Intensity Comparison – Existing Conditions**

Energy Use Intensity Comparison - Existing Conditions		
	Treatment Facility #6 and Well #11 (Western Service Area)	National Median Building Type: Water/Wastewater Treatment/Pumping
Source Energy Use Intensity (kBtu/ft <sup>2</sup> )	1.8	6.61
Site Energy Use Intensity (kBtu/ft <sup>2</sup> )	0.6	2.27

Implementation of all recommended measures in this report would improve the buildings' estimated EUI significantly, as shown in the table below:

**Figure 11 - Energy Use Intensity Comparison – Following Installation of Recommended Measures**

Energy Use Intensity Comparison - Following Installation of Recommended Measures		
	Treatment Facility #6 and Well #11 (Western Service Area)	National Median Building Type: Water/Wastewater Treatment/Pumping
Source Energy Use Intensity (kBtu/ft <sup>2</sup> )	1.7	6.61
Site Energy Use Intensity (kBtu/ft <sup>2</sup> )	0.6	2.27

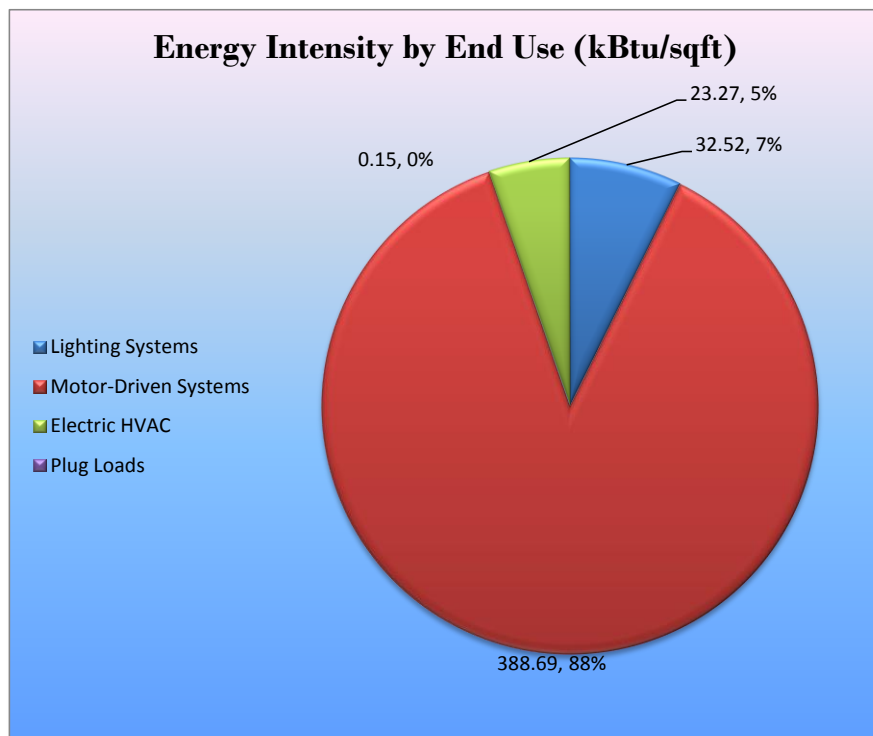
A Portfolio Manager® account has been created online for other facilities in this energy audit and you will be provided with the login information for the account. We encourage you to update your utility information in Portfolio Manager® regularly, so that you can keep track of your building's performance. Free online training is available to help you use ENERGY STAR® Portfolio Manager® to track your building's performance at: <https://www.energystar.gov/buildings/training>.

For more information on ENERGY STAR® certification go to: <https://www.energystar.gov/buildings/facility-owners-and-managers/existing-buildings/earn-recognition/energy-star-certification/how-app-1>.

### 3.4 Energy End-Use Breakdown

In order to provide a complete overview of energy consumption across building systems, an energy balance was performed at this facility. An energy balance utilizes standard practice engineering methods to evaluate all components of the various electric and fuel-fired systems found in a building to determine their proportional contribution to overall building energy usage. This chart of energy end uses highlights the relative contribution of each equipment category to total energy usage. This can help determine where the greatest benefits might be found from energy efficiency measures.

Figure 12 - Energy Balance (kBtu/SF)



## 4 ENERGY CONSERVATION MEASURES

The goal of this audit report is to identify potential energy efficiency opportunities, help prioritize specific measures for implementation, and provide information to the Treatment Facility #6 and Well #11 (Western Service Area) regarding financial incentives for which they may qualify to implement the recommended measures. For this audit report, most measures have received only a preliminary analysis of feasibility which identifies expected ranges of savings and costs. This level of analysis is usually considered sufficient to demonstrate project cost-effectiveness and help prioritize energy measures. Savings are based on the New Jersey Clean Energy Program Protocols to Measure Resource Savings dated June 29, 2016, approved by the New Jersey Board of Public Utilities. Further analysis or investigation may be required to calculate more precise savings based on specific circumstances. A higher level of investigation may be necessary to support any custom SmartStart or Pay for Performance, or Direct Install incentive applications. Financial incentives for the ECMs identified in this report have been calculated based the NJCEP prescriptive SmartStart program. Some measures and proposed upgrade projects may be eligible for higher incentives than those shown below through other NJCEP programs as described in Section 8.

The following sections describe the evaluated measures.

### 4.1 Recommended ECMs

The measures below have been evaluated by the auditor and are recommended for implementation at the facility.

*Figure 13 – Summary of Recommended ECMs*

Energy Conservation Measure		Annual Electric Savings (kWh)	Peak Demand Savings (kW)	Annual Fuel Savings (MMBtu)	Annual Energy Cost Savings (\$)	Estimated Install Cost (\$)	Estimated Incentive (\$)*	Estimated Net Cost (\$)	Simple Payback Period (yrs)**	CO <sub>2</sub> e Emissions Reduction (lbs)
<b>Lighting Upgrades</b>		<b>25,755</b>	<b>2.5</b>	<b>0.0</b>	<b>\$3,240.87</b>	<b>\$7,337.55</b>	<b>\$1,130.00</b>	<b>\$6,207.55</b>	<b>1.9</b>	<b>25,935</b>
ECM 1	Install LED Fixtures	11,550	1.3	0.0	\$1,453.36	\$4,780.15	\$700.00	\$4,080.15	2.8	11,631
ECM 2	Retrofit Fixtures with LED Lamps	14,205	1.2	0.0	\$1,787.51	\$2,557.41	\$430.00	\$2,127.41	1.2	14,305
<b>Lighting Control Measures</b>		<b>2,997</b>	<b>0.2</b>	<b>0.0</b>	<b>\$377.13</b>	<b>\$1,620.00</b>	<b>\$210.00</b>	<b>\$1,410.00</b>	<b>3.7</b>	<b>3,018</b>
ECM 3	Install Occupancy Sensor Lighting Controls	2,997	0.2	0.0	\$377.13	\$1,620.00	\$210.00	\$1,410.00	3.7	3,018
<b>TOTALS</b>		<b>28,752</b>	<b>2.7</b>	<b>0.0</b>	<b>\$3,618.00</b>	<b>\$8,957.55</b>	<b>\$1,340.00</b>	<b>\$7,617.55</b>	<b>2.1</b>	<b>28,953</b>

\* - All incentives presented in this table are based on NJ Smart Start Building equipment incentives and assume proposed equipment meets minimum performance criteria for that program.

\*\* - Simple Payback Period is based on net measure costs (i.e. after incentives).

## 4.1.1 Lighting Upgrades

Our recommendations for upgrades to existing lighting fixtures are summarized in Figure 14 below.

*Figure 14 – Summary of Lighting Upgrade ECMs*

Energy Conservation Measure		Annual Electric Savings (kWh)	Peak Demand Savings (kW)	Annual Fuel Savings (MMBtu)	Annual Energy Cost Savings (\$)	Estimated Install Cost (\$)	Estimated Incentive (\$)	Estimated Net Cost (\$)	Simple Payback Period (yrs)	CO <sub>2</sub> e Emissions Reduction (lbs)
<b>Lighting Upgrades</b>		<b>25,755</b>	<b>2.5</b>	<b>0.0</b>	<b>\$3,240.87</b>	<b>\$7,337.55</b>	<b>\$1,130.00</b>	<b>\$6,207.55</b>	<b>1.9</b>	<b>25,935</b>
ECM 1	Install LED Fixtures	11,550	1.3	0.0	\$1,453.36	\$4,780.15	\$700.00	\$4,080.15	2.8	11,631
ECM 2	Retrofit Fixtures with LED Lamps	14,205	1.2	0.0	\$1,787.51	\$2,557.41	\$430.00	\$2,127.41	1.2	14,305

During lighting upgrade planning and design, we recommend a comprehensive approach that considers both the efficiency of the lighting fixtures and how they are controlled.

### ECM 1: Install LED Fixtures

#### *Summary of Measure Economics*

Interior/ Exterior	Annual Electric Savings (kWh)	Peak Demand Savings (kW)	Annual Fuel Savings (MMBtu)	Annual Energy Cost Savings (\$)	Estimated Install Cost (\$)	Estimated Incentive (\$)	Estimated Net Cost (\$)	Simple Payback Period (yrs)	CO <sub>2</sub> e Emissions Reduction (lbs)
Interior	7,700	0.6	0.0	\$968.91	\$2,436.08	\$100.00	\$2,336.08	2.4	7,754
Exterior	3,850	0.6	0.0	\$484.45	\$2,344.06	\$600.00	\$1,744.06	3.6	3,877

#### *Measure Description*

We recommend replacing interior fluorescent T12 fixtures with LED lamps. Many LED tube lamps are direct replacements for existing fluorescent lamps and can be installed while leaving the fluorescent fixture ballast in place. This measure saves energy by installing LEDs which use less power than other technologies with a comparable light output.

Additional savings from lighting maintenance can be anticipated since LEDs have lifetimes which are more than twice that of a fluorescent tubes and more than ten times longer than many incandescent lamps.

## ECM 2: Retrofit Fixtures with LED Lamps

### Summary of Measure Economics

Interior/ Exterior	Annual Electric Savings (kWh)	Peak Demand Savings (kW)	Annual Fuel Savings (MMBtu)	Annual Energy Cost Savings (\$)	Estimated Install Cost (\$)	Estimated Incentive (\$)	Estimated Net Cost (\$)	Simple Payback Period (yrs)	CO <sub>2</sub> e Emissions Reduction (lbs)
Interior	13,712	1.1	0.0	\$1,725.40	\$2,449.90	\$430.00	\$2,019.90	1.2	13,808
Exterior	494	0.1	0.0	\$62.11	\$107.51	\$0.00	\$107.51	1.7	497

### Measure Description

We recommend retrofitting existing fixtures containing T8 lamps, metal halide, and incandescent lamps with new high performance LED light fixtures. LED bulbs can be used in existing fixtures as a direct replacement for most other lighting technologies. This measure saves energy by installing LEDs which use less power than other lighting technologies yet provide equivalent lighting output for the space.

Additional savings from lighting maintenance can be anticipated since LEDs have lifetimes which are more than twice that of a fluorescent tubes and more than ten times longer than many incandescent lamps.

## 4.1.2 Lighting Control Measures

Our recommendations for lighting control measures are summarized in Figure 15 below.

**Figure 15 – Summary of Lighting Control ECMs**

Energy Conservation Measure	Annual Electric Savings (kWh)	Peak Demand Savings (kW)	Annual Fuel Savings (MMBtu)	Annual Energy Cost Savings (\$)	Estimated Install Cost (\$)	Estimated Incentive (\$)	Estimated Net Cost (\$)	Simple Payback Period (yrs)	CO <sub>2</sub> e Emissions Reduction (lbs)
<b>Lighting Control Measures</b>	<b>2,997</b>	<b>0.2</b>	<b>0.0</b>	<b>\$377.13</b>	<b>\$1,620.00</b>	<b>\$210.00</b>	<b>\$1,410.00</b>	<b>3.7</b>	<b>3,018</b>
ECM 3   Install Occupancy Sensor Lighting Controls	2,997	0.2	0.0	\$377.13	\$1,620.00	\$210.00	\$1,410.00	3.7	3,018

During lighting upgrade planning and design, we recommend a comprehensive approach that considers both the efficiency of the lighting fixtures and how they are controlled.

### ECM 3: Install Occupancy Sensor Lighting Controls

#### *Summary of Measure Economics*

Annual Electric Savings (kWh)	Peak Demand Savings (kW)	Annual Fuel Savings (MMBtu)	Annual Energy Cost Savings (\$)	Estimated Install Cost (\$)	Estimated Incentive (\$)	Estimated Net Cost (\$)	Simple Payback Period (yrs)	CO <sub>2</sub> e Emissions Reduction (lbs)
2,997	0.2	0.0	\$377.13	\$1,620.00	\$210.00	\$1,410.00	3.7	3,018

#### *Measure Description*

We recommend installing occupancy sensors to control all interior lighting fixtures that are currently controlled by manual switches. Sensors detect occupancy using ultrasonic and/or infrared sensors. For most spaces, we recommend lighting controls use dual technology sensors, which can eliminate the possibility of any lights turning off unexpectedly. Lighting systems are enabled when an occupant is detected. Fixtures are automatically turned off after an area has been vacant for a preset period. Some controls also provide dimming options and all modern occupancy controls can be easily over-ridden by room occupants to allow them to manually turn fixtures on or off, as desired. Energy savings results from only operating lighting systems when they are required.

Occupancy sensors may be mounted on the wall at existing switch locations, mounted on the ceiling, or in remote locations. In general, wall switch replacement sensors are recommended for single occupant offices and other small rooms. Ceiling-mounted or remote mounted sensors are used in locations without local switching or where wall switches are not in the line-of-sight of the main work area and in large spaces. We recommend a comprehensive approach to lighting design that upgrades both the lighting fixtures and the controls together for maximum energy savings and improved lighting for occupants.

## 5 ENERGY EFFICIENT PRACTICES

In addition to the quantifiable savings estimated in Section 4, a facility's energy performance can also be improved through application of many low cost or no-cost energy efficiency strategies. By employing certain behavioral and operational changes and performing routine maintenance on building systems, equipment lifetime can be extended; occupant comfort, health and safety can be improved; and energy and O&M costs can be reduced. The recommendations below are provided as a framework for developing a whole building maintenance plan that is customized to your facility. Consult with qualified equipment specialists for details on proper maintenance and system operation.

### **Reduce Air Leakage**

Air leakage, or infiltration, occurs when outside air enters a building uncontrollably through cracks and openings. Properly sealing such cracks and openings can significantly reduce heating and cooling costs, improve building durability, and create a healthier indoor environment. This includes caulking or installing weather stripping around leaky doors and windows allowing for better control of indoor air quality through controlled ventilation.

### **Close Doors and Windows**

Ensure doors and windows are closed in conditioned spaces. Leaving doors and windows open leads to a significant increase in heat transfer between conditioned spaces and the outside air. Reducing a facility's air changes per hour (ACH) can lead to increased occupant comfort as well as significant heating and cooling savings, especially when combined with proper HVAC controls and adequate ventilation.

### **Ensure Lighting Controls Are Operating Properly**

Lighting controls are very cost effective energy efficient devices, when installed and operating correctly. As part of a lighting maintenance schedule, lighting controls should be tested annually to ensure proper functioning. For occupancy sensors, this requires triggering the sensor and verifying that the sensor's timer settings are correct. For daylight sensors, maintenance involves cleaning of sensor lenses and confirming setpoints and sensitivity are appropriately configured.

### **Perform Routine Motor Maintenance**

Motors consist of many moving parts whose collective degradation can contribute to a significant loss of motor efficiency. In order to prevent damage to motor components, routine maintenance should be performed. This maintenance consists of cleaning surfaces and ventilation openings on motors to prevent overheating, lubricating moving parts to reduce friction, inspecting belts and pulleys for wear and to ensure they are at proper alignment and tension, and cleaning and lubricating bearings. Consult a licensed technician to assess these and other motor maintenance strategies.

### **Practice Proper Use of Thermostat Schedules and Temperature Resets**

Ensure thermostats are correctly set back. By employing proper set back temperatures and schedules, facility heating and cooling costs can be reduced dramatically during periods of low or no occupancy. As such, thermostats should be programmed for a setback of 5°F -10°F during low occupancy hours (reduce heating setpoints and increase cooling setpoints). Cooling load can be reduced further by increasing the facility's occupied setpoint temperature. In general, during the cooling season, thermostats should be set as high as possible without sacrificing occupant comfort.

## **Plug Load Controls**

There are a variety of ways to limit the energy use of plug loads including increasing occupant awareness, removing under-utilized equipment, installing hardware controls, and using software controls. Some control steps to take are to enable the most aggressive power settings on existing devices or install load sensing or occupancy sensing (advanced) power strips. For additional information refer to “Plug Load Best Practices Guide” <http://www.advancedbuildings.net/plug-load-best-practices-guide-offices>.

## **Replace Computer Monitors**

Replacing old computer monitors or displays with efficient monitors will reduce energy use. ENERGY STAR® rated monitors have specific requirements for on mode power consumption as well as idle and sleep mode power. According to the ENERGY STAR® website monitors that have earned the ENERGY STAR® label are 25% more efficient than standard monitors.

## **Water Conservation**

Installing low-flow faucets or faucet aerators, low-flow showerheads, and kitchen sink pre-rinse spray valves saves both energy and water. These devices save energy by reducing the overall amount of hot water used hence reducing the energy used to heat the water. The flow ratings for EPA WaterSense™ (<http://www3.epa.gov/watersense/products>) labeled devices are 1.5 gpm for bathroom faucets, 2.0 gpm for showerheads, and 1.28 gpm for pre-rinse spray valves.

Installing dual flush or low-flow toilets and low-flow or waterless urinals are additional ways to reduce the sites water use, however, these devices do not provide energy savings at the site level. Any reduction in water use does however ultimately reduce grid level electricity use since a significant amount of electricity is used to deliver water from reservoirs to end users. The EPA WaterSense™ ratings for urinals is 0.5 gpf and toilets that use as little as 1.28 gpf (this is lower than the current 1.6 gpf federal standard).

## 6 ON-SITE GENERATION MEASURES

On-site generation measure options include both renewable (e.g., solar, wind) and non-renewable (e.g., fuel cells) on-site technologies that generate power to meet all or a portion of the electric energy needs of a facility, often repurposing any waste heat where applicable. Also referred to as distributed generation, these systems contribute to Greenhouse Gas (GHG) emission reductions, demand reductions and reduced customer electricity purchases, resulting in the electric system reliability through improved transmission and distribution system utilization.

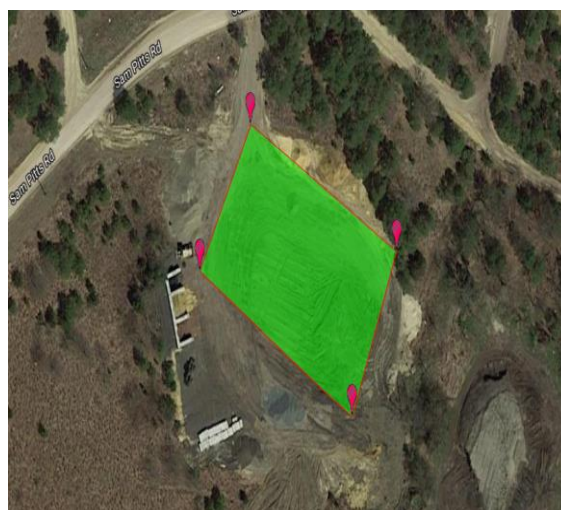
The State of New Jersey's Energy Master Plan (EMP) encourages new distributed generation of all forms and specifically focuses on expanding use of combined heat and power (CHP) by reducing financial, regulatory and technical barriers and identifying opportunities for new entries. The EMP also outlines a goal of 70% of the State's electrical needs to be met by renewable sources by 2050.

Preliminary screenings were performed to determine the potential that a generation project could provide a cost-effective solution for your facility. Before making a decision to implement, a feasibility study should be conducted that would take a detailed look at existing energy profiles, siting, interconnection, and the costs associated with the generation project including interconnection costs, departing load charges, and any additional special facilities charges.

### 6.1 Photovoltaic

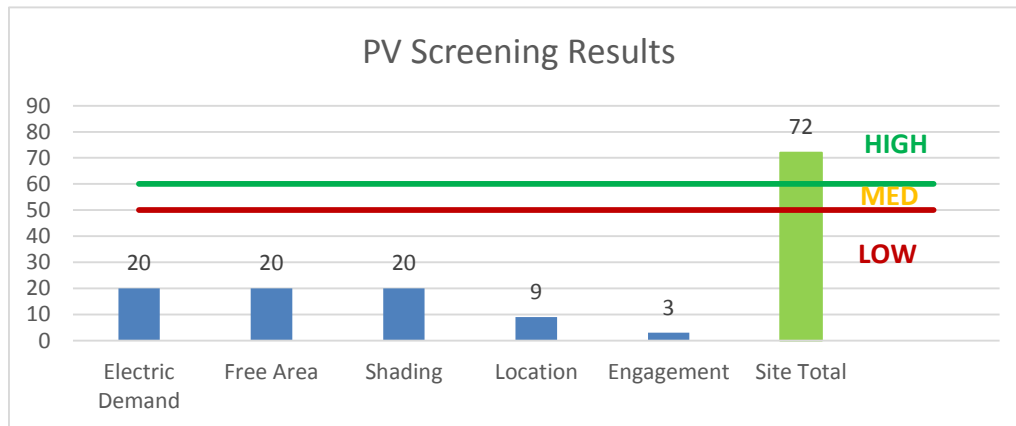
Sunlight can be converted into electricity using photovoltaics (PV) modules. Modules are racked together into an array that produces direct current (DC) electricity. The DC current is converted to alternating current (AC) through an inverter. The inverter is interconnected to the facility's electrical distribution system. The amount of unobstructed area available determines how large of a solar array can be installed. The size of the array combined with the orientation, tilt, and shading elements determines the energy produced.

The facility requested TRC to analyze the solar potential at a former landfill site owned by the township located at 1360 Route 70, Whiting, New Jersey. The image below shows the area considered for the solar PV. The area is approximately 117,000 sq. feet.



A preliminary screening based on the facility's electric demand, size and location of free area, and shading elements shows that the site has a high potential for cost-effective installation of a PV array. Please refer to the Municipal Building energy audit report for further details on the cost and savings analysis of installing solar PV at the location shown above. TRC recommends that the site be assessed by a qualified solar installer. Site conditions need to be assessed and options for sale of power or usage by municipal buildings need to be more fully explored in order to determine project cost-effectiveness.

**Figure 16 - Photovoltaic Screening**



Solar projects must register their projects in the SREC (Solar Renewable Energy Certificate) Registration Program (SRP) prior to the start of construction in order to establish the project's eligibility to earn SRECs. Registration of the intent to participate in New Jersey's solar marketplace provides market participants with information about developed new solar projects and insight into future SREC pricing. Refer to Section 8.2 for additional information.

For more information on solar PV technology and commercial solar markets in New Jersey, or to find a qualified solar installer, who can provide a more detailed assessment of the specific costs and benefits of solar develop of the site, please visit the following links below:

- **Basic Info on Solar PV in NJ:** <http://www.njcleanenergy.com/whysolar>
- **NJ Solar Market FAQs:** <http://www.njcleanenergy.com/renewable-energy/program-updates-and-background-information/solar-transition/solar-market-faqs>
- **Approved Solar Installers in the NJ Market:** [http://www.njcleanenergy.com/commercial-industrial/programs/nj-smartstart-buildings/tools-and-resources/tradeally/approved\\_vendorsearch/?id=60&start=1](http://www.njcleanenergy.com/commercial-industrial/programs/nj-smartstart-buildings/tools-and-resources/tradeally/approved_vendorsearch/?id=60&start=1)

## 6.2 Combined Heat and Power

Combined heat and power (CHP) is the on-site generation of electricity along with the recovery of heat energy, which is put to beneficial use. Common technologies for CHP include reciprocating engines, microturbines, fuel cells, backpressure steam turbines, and (at large facilities) gas turbines. Electric generation from a CHP system is typically interconnected to local power distribution systems. Heat is recovered from exhaust and ancillary cooling systems and interconnected to the existing hot water (or steam) distribution systems.

CHP systems are typically used to produce a portion of the electric power used onsite by a facility, with the balance of electric power needs supplied by grid purchases. The heat is used to supplement (or supplant) existing boilers for the purpose of space heating and/or domestic hot water heating. Waste heat can also be routed through absorption chillers for the purpose of space cooling. The key criteria used for screening, however, is the amount of time the system operates at full load and the facility's ability to use the recovered heat. Facilities with continuous use for large quantities of waste heat are the best candidates for CHP.

A preliminary screening based on heating and electrical demand, siting, and interconnection shows that the facility has a low potential for installing a cost-effective CHP system.

Lack of gas service, low or infrequent thermal load, and lack of space near the existing boilers are the most significant factors contributing to the low potential for CHP at the site. In our opinion, the facility does not appear to meet the minimum requirements for a cost-effective CHP installation.

For a list of qualified firms in New Jersey specializing in commercial CHP cost assessment and installation, go to: [http://www.njcleanenergy.com/commercial-industrial/programs/nj-smartstart-buildings/tools-and-resources/tradeally/approved\\_vendorsearch/](http://www.njcleanenergy.com/commercial-industrial/programs/nj-smartstart-buildings/tools-and-resources/tradeally/approved_vendorsearch/).

## 7 DEMAND RESPONSE

Demand Response (DR) is a program designed to reduce the electric load of commercial facilities when electric wholesale prices are high or when the reliability of the electric grid is threatened due to peak demand. Demand Response service providers (a.k.a. Curtailment Service Providers) are registered with PJM, the independent system operator (ISO) for mid-Atlantic state region that is charged with maintaining electric grid reliability.

By enabling grid operators to call upon Curtailment Service Providers and commercial facilities to reduce electric usage during times of peak demand, the grid is made more reliable and overall transmission costs are reduced for all ratepayers. Curtailment Service Providers provide regular payments to medium and large consumers of electric power for their participation in DR programs. Program participation is voluntary and participants receive payments whether or not their facility is called upon to curtail their electric usage.

Typically an electric customer needs to be capable of reducing their electric demand, within minutes, by at least 100 kW or more in order to participate in a DR program. Customers with a greater capability to quickly curtail their demand during peak hours will receive higher payments. Customers with back-up generators onsite may also receive additional DR payments for their generating capacity if they agree to run the generators for grid support when called upon. Eligible customers who have chosen to participate in a DR programs often find it to be a valuable source of revenue for their facility because the payments can significantly offset annual electric costs.

Participating customers can often quickly reduce their peak load through simple measures, such as temporarily raising temperature set points on thermostats, so that air conditioning units run less frequently, or agreeing to dim or shut off less critical lighting. This usually requires some level of building automation and controls capability to ensure rapid load reduction during a DR curtailment event. DR program participants may need to install smart meters or may need to also sub-meter larger energy-using equipment, such as chillers, in order to demonstrate compliance with DR program requirements.

DR does not include the reduction of electricity consumption based on normal operating practice or behavior. For example, if a company's normal schedule is to close for a holiday, the reduction of electricity due to this closure or scaled-back operation is not considered a demand response activity in most situations.

The first step toward participation in a DR program is to contact a Curtailment Service Provider. A list of these providers is available on PJM's website and it includes contact information for each company, as well as the states where they have active business (<http://www.pjm.com/markets-and-operations/demand-response/csps.aspx>). PJM also posts training materials that are developed for program members interested in specific rules and requirements regarding DR activity (<http://www.pjm.com/training/training%20material.aspx>), along with a variety of other DR program information.

Curtailment Service Providers typically offer free assessments to determine a facility's eligibility to participate in a DR program. They will provide details regarding program rules and requirements for metering and controls, assess a facility's ability to temporarily reduce electric load, and provide details on payments to be expected for participation in the program. Providers usually offer multiple options for DR to larger facilities and may also install controls or remote monitoring equipment of their own to help ensure compliance with all terms and conditions of a DR contract.

## 8 PROJECT FUNDING / INCENTIVES

The NJCEP is able to provide the incentive programs described below, and other benefits to ratepayers, because of the Societal Benefits Charge (SBC) Fund. The SBC was created by the State of New Jersey's Electricity Restructuring Law (1999), which requires all customers of investor-owned electric and gas utilities to pay a surcharge on their monthly energy bills. As a customer of a state-regulated electric or gas utility and, therefore, a contributor to the fund, your organization is eligible to participate in the LGEA program and also eligible to receive incentive payment for qualifying energy efficiency measures. Also available through the NJBPU are some alternative financing programs described later in this section. Please refer to Figure 17 for a list of the eligible programs identified for each recommended ECM.

**Figure 17 - ECM Incentive Program Eligibility**

Energy Conservation Measure		SmartStart Prescriptive	SmartStart Custom	Direct Install	Pay For Performance Existing Buildings	Large Energy Users Program	Combined Heat & Power and Fuel Cell
ECM 1	Install LED Fixtures	x					
ECM 2	Retrofit Fixtures with LED Lamps	x					
ECM 3	Install Occupancy Sensor Lighting Controls	x					

SmartStart is generally well-suited for implementation of individual measures or small group of measures. It provides flexibility to install measures at your own pace using in-house staff or a preferred contractor. Direct Install caters to small to mid-size facilities that can bundle multiple ECMs together. This can greatly simplify participation and may lead to higher incentive amounts, but requires the use of pre-approved contractors. The Pay for Performance (P4P) program is a “whole-building” energy improvement program designed for larger facilities. It requires implementation of multiple measures meeting minimum savings thresholds, as well as use of pre-approved consultants. The Large Energy Users Program (LEUP) is available to New Jersey's largest energy users giving them flexibility to install as little or as many measures, in a single facility or several facilities, with incentives capped based on the entity's annual energy consumption. LEUP applicants can use in-house staff or a preferred contractor.

Generally, the incentive values provided throughout the report assume the SmartStart program is utilized because it provides a consistent basis for comparison of available incentives for various measures, though in many cases incentive amounts may be higher through participation in other programs.

Brief descriptions of all relevant financing and incentive programs are located in the sections below. Further information, including most current program availability, requirements, and incentive levels can be found at: [www.njcleanenergy.com/ci](http://www.njcleanenergy.com/ci).

## 8.1 SmartStart

### Overview

The SmartStart program offers incentives for installing prescriptive and custom energy efficiency measures at your facility. Routinely the program adds, removes or modifies incentives from year to year for various energy efficiency equipment based on market trends and new technologies.

### **Equipment with Prescriptive Incentives Currently Available:**

*Electric Chillers*  
*Electric Unitary HVAC*

*Gas Cooling*

*Gas Heating*

*Gas Water Heating*

*Ground Source Heat Pumps*

*Lighting*

*Lighting Controls*

*Refrigeration Doors*

*Refrigeration Controls*

*Refrigerator/Freezer Motors*

*Food Service Equipment*

*Variable Frequency Drives*

Most equipment sizes and types are served by this program. This program provides an effective mechanism for securing incentives for energy efficiency measures installed individually or as part of a package of energy upgrades.

### Incentives

The SmartStart prescriptive incentive program provides fixed incentives for specific energy efficiency measures, whereas the custom SmartStart program provides incentives for more unique or specialized technologies or systems that are not addressed through prescriptive incentive offerings for specific devices.

Since your facility is an existing building, only the retrofit incentives have been applied in this report. Custom measure incentives are calculated at \$0.16/kWh and \$1.60/therm based on estimated annual savings, capped at 50% of the total installed incremental project cost, or a project cost buy down to a one year payback (whichever is less). Program incentives are capped at \$500,000 per electric account and \$500,000 per natural gas account, per fiscal year.

### How to Participate

To participate in the SmartStart program you will need to submit an application for the specific equipment to be installed. Many applications are designed as rebates, although others require application approval prior to installation. Applicants may work with a contractor of their choosing and can also utilize internal personnel, which provides added flexibility to the program. Using internal personnel also helps improve the economics of the ECM by reducing the labor cost that is included in the tables in this report.

Detailed program descriptions, instructions for applying and applications can be found at: [www.njcleanenergy.com/SSB](http://www.njcleanenergy.com/SSB).

## 8.2 SREC Registration Program

The SREC (Solar Renewable Energy Certificate) Registration Program (SRP) is used to register the intent to install solar projects in New Jersey. Rebates are not available for solar projects, but owners of solar projects MUST register their projects in the SRP prior to the start of construction in order to establish the project's eligibility to earn SRECs. Registration of the intent to participate in New Jersey's solar marketplace provides market participants with information about the pipeline of anticipated new solar capacity and insight into future SREC pricing.

After the registration is accepted, construction is complete, and final paperwork has been submitted and is deemed complete, the project is issued a New Jersey certification number which enables it to generate New Jersey SRECs. SRECs are generated once the solar project has been authorized to be energized by the Electric Distribution Company (EDC).

Each time a solar installation generates 1,000 kilowatt-hours (kWh) of electricity, an SREC is earned. Solar project owners report the energy production to the SREC Tracking System. This reporting allows SRECs to be placed in the customer's electronic account. SRECs can then be sold on the SREC Tracking System, providing revenue for the first 15 years of the project's life.

Electricity suppliers, the primary purchasers of SRECs, are required to pay a Solar Alternative Compliance Payment (SACP) if they do not meet the requirements of New Jersey's Solar RPS. One way they can meet the RPS requirements is by purchasing SRECs. As SRECs are traded in a competitive market, the price may vary significantly. The actual price of an SREC during a trading period can and will fluctuate depending on supply and demand.

Information about the SRP can be found at: [www.njcleanenergy.com/srec](http://www.njcleanenergy.com/srec).

### 8.3 Energy Savings Improvement Program

The Energy Savings Improvement Program (ESIP) is an alternate method for New Jersey's government agencies to finance the implementation of energy conservation measures. An ESIP is a type of "performance contract," whereby school districts, counties, municipalities, housing authorities and other public and state entities enter in to contracts to help finance building energy upgrades. This is done in a manner that ensures that annual payments are lower than the savings projected from the ECMs, ensuring that ESIP projects are cash flow positive in year one, and every year thereafter. ESIP provides government agencies in New Jersey with a flexible tool to improve and reduce energy usage with minimal expenditure of new financial resources. NJCEP incentive programs can be leveraged to help further reduce the total project cost of eligible measures.

This LGEA report is the first step to participating in ESIP. Next, you will need to select an approach for implementing the desired ECMs:

- (1) Use an Energy Services Company or "ESCO."
- (2) Use independent engineers and other specialists, or your own qualified staff, to provide and manage the requirements of the program through bonds or lease obligations.
- (3) Use a hybrid approach of the two options described above where the ESCO is utilized for some services and independent engineers, or other specialists or qualified staff, are used to deliver other requirements of the program.

After adopting a resolution with a chosen implementation approach, the development of the Energy Savings Plan (ESP) can begin. The ESP demonstrates that the total project costs of the ECMs are offset by the energy savings over the financing term, not to exceed 15 years. The verified savings will then be used to pay for the financing.

The ESIP approach may not be appropriate for all energy conservation and energy efficiency improvements. Entities should carefully consider all alternatives to develop an approach that best meets their needs. A detailed program description and application can be found at: [www.njcleanenergy.com/ESIP](http://www.njcleanenergy.com/ESIP).

Please note that ESIP is a program delivered directly by the NJBPU and is not an NJCEP incentive program. As mentioned above, you may utilize NJCEP incentive programs to help further reduce costs when developing the ESP. You should refer to the ESIP guidelines at the link above for further information and guidance on next steps.

## 9 ENERGY PURCHASING AND PROCUREMENT STRATEGIES

---

### 9.1 Retail Electric Supply Options

In 1999, New Jersey State Legislature passed the Electric Discount & Energy Competition Act (EDECA) to restructure the electric power industry in New Jersey. This law deregulated the retail electric markets, allowing all consumers to shop for service from competitive electric suppliers. The intent was to create a more competitive market for electric power supply in New Jersey. As a result, utilities were allowed to charge Cost of Service and customers were given the ability to choose a third party (i.e., non-utility) energy supplier.

Energy deregulation in New Jersey has increased energy buyers' options by separating the function of electricity distribution from that of electricity supply. So, though you may choose a different company from which to buy your electric power, responsibility for your facility's interconnection to the grid and repair to local power distribution will still reside with the traditional utility company serving your region.

If your facility is not purchasing electricity from a third party supplier, consider shopping for a reduced rate from third party electric suppliers. If your facility is purchasing electricity from a third party supplier, review and compare prices at the end of the current contract or every couple years.

A list of third party electric suppliers, who are licensed by the state to provide service in New Jersey, can be found online at: [www.state.nj.us/bpu/commercial/shopping.html](http://www.state.nj.us/bpu/commercial/shopping.html).

### 9.2 Retail Natural Gas Supply Options

The natural gas market in New Jersey has also been deregulated. Most customers that remain with the utility for natural gas service pay rates that are market-based and that fluctuate on a monthly basis. The utility provides basic gas supply service (BGSS) to customers who choose not to buy from a third party supplier for natural gas commodity.

A customer's decision about whether to buy natural gas from a retail supplier is typically dependent upon whether a customer seeks budget certainty and/or longer-term rate stability. Customers can secure longer-term fixed prices by signing up for service through a third party retail natural gas supplier. Many larger natural gas customers may seek the assistance of a professional consultant to assist in their procurement process.

If your facility is not purchasing natural gas from a third party supplier, consider shopping for a reduced rate from third party natural gas suppliers. If your facility is purchasing natural gas from a third party supplier, review and compare prices at the end of the current contract or every couple years.

A list of third party natural gas suppliers, who are licensed by the state to provide service in New Jersey, can be found online at: [www.state.nj.us/bpu/commercial/shopping.html](http://www.state.nj.us/bpu/commercial/shopping.html).

## Appendix A: Equipment Inventory & Recommendations

### Lighting Inventory & Recommendations

	Existing Conditions					Proposed Conditions							Energy Impact & Financial Analysis						
Location	Fixture Quantity	Fixture Description	Control System	Watts per Fixture	Annual Operating Hours	Fixture Recommendation	Add Controls?	Fixture Quantity	Fixture Description	Control System	Watts per Fixture	Annual Operating Hours	Total Peak kW Savings	Total Annual kWh Savings	Total Annual MMBtu Savings	Total Annual Energy Cost Savings	Total Installation Cost	Total Incentives	Simple Payback w/ Incentives in Years
Filter room	26	Linear Fluorescent - T8: 4' T8 (32W) - 2L	Wall Switch	62	8,736	Relamp	Yes	26	LED - Linear Tubes: (2) 4' Lamps	Occupancy Sensor	29	6,115	0.88	10,703	0.0	\$1,346.78	\$2,061.00	\$330.00	1.29
Testing area	3	Linear Fluorescent - T8: 4' T8 (32W) - 4L	Wall Switch	114	8,736	Relamp	No	3	LED - Linear Tubes: (4) 4' Lamps	Wall Switch	58	8,736	0.14	1,658	0.0	\$208.69	\$285.40	\$60.00	1.08
Treatment room	5	Linear Fluorescent - T8: 4' T8 (32W) - 2L	Wall Switch	62	8,736	Relamp	No	5	LED - Linear Tubes: (2) 4' Lamps	Wall Switch	29	8,736	0.13	1,629	0.0	\$204.96	\$292.50	\$50.00	1.18
Treatment room	3	Linear Fluorescent - T12: 8' T12 (75W) - 2L	Wall Switch	158	8,736	Fixture Replacement	No	2	LED - Fixtures: Ambient 2x4 Fixture	Wall Switch	42	8,736	0.32	3,850	0.0	\$484.45	\$1,218.04	\$50.00	2.41
Pump #11 room	3	Linear Fluorescent - T12: 8' T12 (75W) - 2L	Wall Switch	158	8,736	Fixture Replacement	Yes	2	LED - Fixtures: Ambient 2x4 Fixture	Occupancy Sensor	42	6,115	0.34	4,099	0.0	\$515.76	\$1,488.04	\$85.00	2.72
Restroom	1	Linear Fluorescent - T8: 4' T8 (32W) - 2L	Wall Switch	62	8,736	Relamp	Yes	1	LED - Linear Tubes: (2) 4' Lamps	Occupancy Sensor	29	6,115	0.03	412	0.0	\$51.80	\$328.50	\$45.00	5.47
Chlorine room	1	Linear Fluorescent - T8: 4' T8 (32W) - 2L	Wall Switch	62	8,736	Relamp	Yes	1	LED - Linear Tubes: (2) 4' Lamps	Occupancy Sensor	29	6,115	0.03	412	0.0	\$51.80	\$328.50	\$45.00	5.47
Generator room	4	Linear Fluorescent - T8: 4' T8 (32W) - 2L	Wall Switch	62	8,736	Relamp	Yes	4	LED - Linear Tubes: (2) 4' Lamps	Occupancy Sensor	29	6,115	0.14	1,647	0.0	\$207.20	\$504.00	\$75.00	2.07
Exterior	6	Metal Halide: (1) 150W Lamp	Daylight Dimming	190	4,368	Fixture Replacement	No	6	LED - Fixtures: Outdoor Wall-Mounted Area Fixture	Daylight Dimming	60	4,368	0.63	3,850	0.0	\$484.45	\$2,344.06	\$600.00	3.60
Exterior	2	Incandescent 60W	Daylight Dimming	60	4,368	Relamp	No	2	LED Screw-In Lamps: 10W LED	Daylight Dimming	10	4,368	0.08	494	0.0	\$62.11	\$107.51	\$0.00	1.73

## Motor Inventory & Recommendations

Location	Area(s)/System(s) Served	Existing Conditions						Proposed Conditions				Energy Impact & Financial Analysis						
		Motor Quantity	Motor Application	HP Per Motor	Full Load Efficiency	VFD Control?	Annual Operating Hours	Install High Efficiency Motors?	Full Load Efficiency	Install VFDs?	Number of VFDs	Total Peak kW Savings	Total Annual kWh Savings	Total Annual MMBtu Savings	Total Annual Energy Cost Savings	Total Installation Cost	Total Incentives	Simple Payback w/ Incentives in Years
Well pump #11	Water stand pipe	1	Process Pump	250.0	95.8%	Yes	2,920	No	95.8%	No		0.00	0	0.0	\$0.00	\$0.00	\$0.00	0.00
Backwash pumps	Treatment tanks	2	Process Pump	10.0	90.0%	No	1,095	No	90.0%	No		4.42	3,874	0.0	\$0.00	\$10,000.00	\$0.00	0.00

## Electric HVAC Inventory & Recommendations

		Existing Conditions				Proposed Conditions								Energy Impact & Financial Analysis						
Location	Area(s)/System(s) Served	System Quantity	System Type	Cooling Capacity per Unit (Tons)	Heating Capacity per Unit (kBtu/hr)	Install High Efficiency System?	System Quantity	System Type	Cooling Capacity per Unit (Tons)	Heating Capacity per Unit (kBtu/hr)	Cooling Mode Efficiency (SEER/EER)	Heating Mode Efficiency (COP)	Install Dual Enthalpy Economizer?	Total Peak kW Savings	Total Annual kWh Savings	Total Annual MMBtu Savings	Total Annual Energy Cost Savings	Total Installation Cost	Total Incentives	Simple Payback w/ Incentives in Years
Control room	Filter room	6	Electric Resistance Heat		17.06	No							No	0.00	0	0.0	\$0.00	\$0.00	\$0.00	0.00
Control room	Control room	1	Split-System Air-Source HP	1.83	15.20	No							No	0.00	0	0.0	\$0.00	\$0.00	\$0.00	0.00

## Plug Load Inventory

Location	Existing Conditions			
	Quantity	Equipment Description	Energy Rate (W)	ENERGY STAR Qualified?
Control room	1	Desktop computer	75.0	No
Control room	1	Printer	150.0	No