



Local Government Energy Audit Report

Mansfield Elementary School

July 25, 2023

Prepared for:

Mansfield Elementary School
50 Port Murray Rd
Port Murray, New Jersey 07865

Prepared by:

TRC
317 George Street
New Brunswick, New Jersey 08901

Disclaimer

The goal of this audit report is to identify potential energy efficiency opportunities and help prioritize specific measures for implementation. Most energy conservation measures have received preliminary analysis of feasibility that identifies expected ranges of savings and costs. This level of analysis is usually considered sufficient to establish a basis for further discussion and to help prioritize energy measures.

TRC reviewed the energy conservation measures and estimates of energy savings for technical accuracy. Actual, achieved energy savings depend on behavioral factors and other uncontrollable variables and, therefore, estimates of final energy savings are not guaranteed. TRC and the New Jersey Board of Public Utilities (NJBPU) shall in no event be liable should the actual energy savings vary.

TRC bases estimated material and labor costs primarily on RS Means cost manuals as well as on our experience at similar facilities. This approach is based on standard cost estimating manuals and is vendor neutral. Cost estimates include material and labor pricing associated with one for one equipment replacements. Cost estimates do not include demolition or removal of hazardous waste. The actual implementation costs for energy savings projects are anticipated to be significantly higher based on the specific conditions at your site(s). We strongly recommend that you work with your design engineer or contractor to develop actual project costs for your specific scope of work for the installation of high efficiency equipment. We encourage you to obtain multiple estimates when considering measure installations. Actual installation costs can vary widely based on selected products and installers. TRC and NJBPU do not guarantee cost estimates and shall in no event be held liable should actual installed costs vary from these material and labor estimates.

Incentive values provided in this report are estimated based on previously run state efficiency programs. Incentive levels are not guaranteed. The NJBPU reserves the right to extend, modify, or terminate programs without prior notice. Please review all available utility program incentives and eligibility requirements prior to selecting and installing any energy conservation measures.

The customer and their respective contractor(s) are responsible to implement energy conservation measures in complete conformance with all applicable local, state, and federal requirements.

Copyright ©2023 TRC. All rights reserved.

Reproduction or distribution of the whole, or any part of the contents of this document without written permission of TRC is prohibited. Neither TRC nor any of its employees makes any warranty, express or implied, or assumes any legal liability or responsibility for the accuracy, completeness, or usefulness of any data, information, method, product or process disclosed in this document, or represents that its use will not infringe upon any privately-owned rights, including but not limited to, patents, trademarks or copyrights.

Table of Contents

1	Executive Summary.....	1
1.1	Planning Your Project	4
	Pick Your Installation Approach	4
	Options from Your Utility Company.....	4
	<i>Prescriptive and Custom Rebates</i>	4
	<i>Direct Install</i>	4
	<i>Engineered Solutions</i>	4
	Options from New Jersey's Clean Energy Program	5
2	Existing Conditions.....	6
2.1	Site Overview.....	6
2.2	Building Occupancy	6
2.3	Building Envelope	6
2.4	Lighting Systems.....	7
2.5	Air Handling Systems.....	9
	Unit Ventilators	9
	Unitary Electric HVAC Equipment	9
	Unitary Heating Equipment.....	9
	Packaged Units	10
	Air Handling Units (AHUs)	10
2.6	Heating Hot Water Systems	10
2.7	Building Automation System (BAS)	11
2.8	Domestic Hot Water	11
2.9	Food Service Equipment.....	12
2.10	Refrigeration.....	12
2.11	Plug Load and Vending Machines	13
2.12	Water-Using Systems	13
2.13	On-Site Generation.....	14
3	Energy Use and Costs	15
3.1	Electricity	17
3.2	No. 2 Fuel Oil	18
3.3	Propane	19
3.4	Benchmarking.....	20
	Tracking Your Energy Performance	21
4	Energy Conservation Measures	22
4.1	Lighting	25
	ECM 1: Install LED Fixtures	25
	ECM 2: Retrofit Fluorescent Fixtures with LED Lamps and Drivers.....	25
	ECM 3: Retrofit Fixtures with LED Lamps	26
4.2	Lighting Controls.....	26
	ECM 4: Install Occupancy Sensor Lighting Controls	26
	ECM 5: Install High/Low Lighting Controls	27

4.3	Variable Frequency Drives (VFD).....	27
	ECM 6: Install VFDs on Constant Volume (CV) Fans	27
4.4	Unitary HVAC.....	28
	ECM 7: Install High Efficiency Air Conditioning Units.....	28
	ECM 8: Install High Efficiency Heat Pumps.....	28
4.5	Fuel Oil-Fired Heating.....	29
	ECM 9: Install High Efficiency Hot Water Boilers	29
4.6	Domestic Water Heating	29
	ECM 10: Install Low-Flow DHW Devices.....	29
5	Energy Efficient Best Practices	30
	Energy Tracking with ENERGY STAR Portfolio Manager.....	30
	Lighting Maintenance.....	30
	Lighting Controls	30
	Motor Maintenance	31
	Destratification Fans	31
	Economizer Maintenance	31
	AC System Evaporator/Condenser Coil Cleaning	31
	HVAC Filter Cleaning and Replacement	31
	Ductwork Maintenance.....	32
	Boiler Maintenance	32
	Label HVAC Equipment	32
	Water Heater Maintenance	32
	Water Conservation	33
	Procurement Strategies	33
6	On-site Generation	34
6.1	Solar Photovoltaic	35
6.2	Combined Heat and Power	37
7	Electric Vehicles (EV)	38
7.1	Electric Vehicle Charging	38
8	Project Funding and Incentives.....	40
8.1	Utility Energy Efficiency Programs	41
	Prescriptive and Custom	41
	Direct Install	41
	Engineered Solutions	42
8.2	New Jersey's Clean Energy Programs.....	43
	Large Energy Users.....	43
	Combined Heat and Power	44
	Successor Solar Incentive Program (SuSI)	45
	Energy Savings Improvement Program	46
9	Project Development	47
10	Energy Purchasing and Procurement Strategies	48
10.1	Retail Electric Supply Options.....	48
	Appendix A: Equipment Inventory & Recommendations	A-1



Appendix B: ENERGY STAR Statement of Energy Performance	B-1
Appendix C: Glossary	C-1

1 EXECUTIVE SUMMARY

The New Jersey Board of Public Utilities (NJBPB) has sponsored this Local Government Energy Audit (LGEA) report for Mansfield Elementary School. This report provides you with information about your facility's energy use, identifies energy conservation measures (ECMs) that can reduce your energy use, and provides information and assistance to help make changes in your facility. TRC conducted this study as part of a comprehensive effort to assist New Jersey school districts and local governments in controlling their energy costs and to help protect our environment by reducing statewide energy consumption.

BUILDING PERFORMANCE REPORT



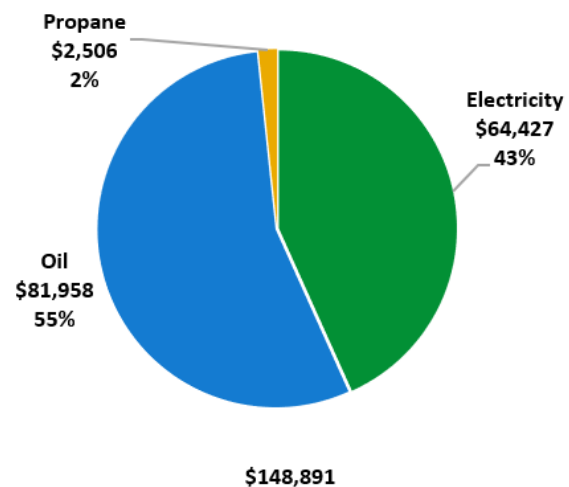
Costs: \$148,891

Electricity:
525,168 kWh

Annual Utilities

No. 2 Fuel Oil:
26,532 Gallons

Propane:
406 Gallons



ENERGY STAR®
Benchmarking Score

71
(1-100 scale)

Congratulations, your building performs better than the national average. This report has suggestions about how to keep your building running efficiently, further improve performance, and lower your energy bills even more.

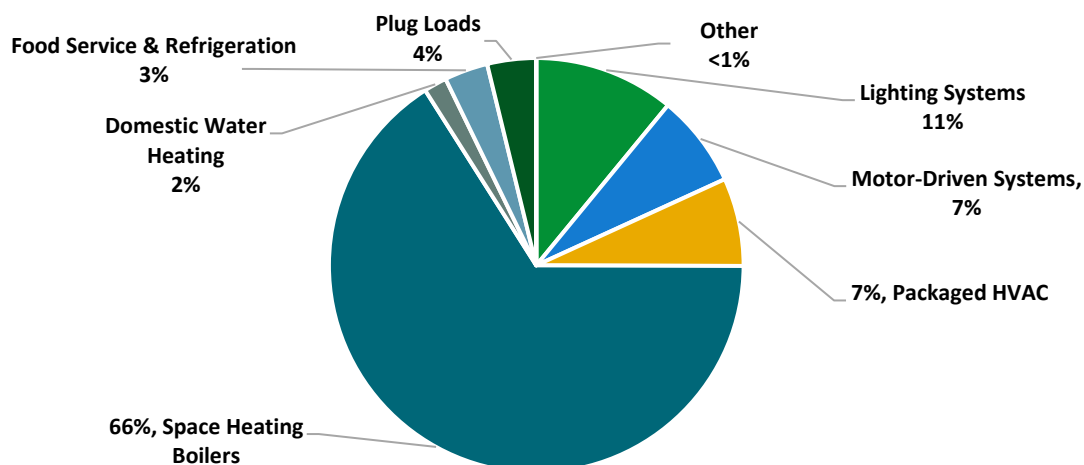


Figure 1 - Energy Use by System

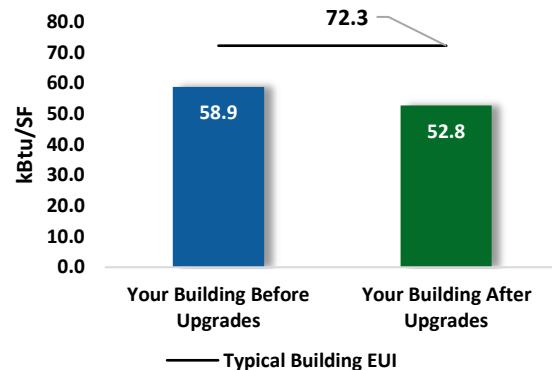
POTENTIAL IMPROVEMENTS



This energy audit considered a range of potential energy improvements in your building. Costs and savings will vary between improvements. Presented below are two potential scopes of work for your consideration.

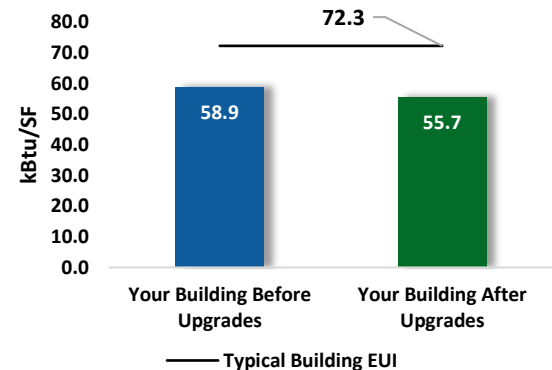
Scenario 1: Full Package (All Evaluated Measures)

Installation Cost	\$277,171
Potential Rebates & Incentives ¹	\$27,128
Annual Cost Savings	\$17,873
Annual Energy Savings	Electricity: 110,371 kWh No. 2 Fuel Oil: 1,364 Gallons Propane: 19 Gallons
Greenhouse Gas Emission Savings	71 Tons
Simple Payback	14.0 Years
Site Energy Savings (All Utilities)	10%



Scenario 2: Cost Effective Package²

Installation Cost	\$83,606
Potential Rebates & Incentives	\$17,416
Annual Cost Savings	\$11,205
Annual Energy Savings	Electricity: 97,017 kWh No. 2 Fuel Oil: -264 Gallons Propane: 19 Gallons
Greenhouse Gas Emission Savings	46 Tons
Simple Payback	5.9 Years
Site Energy Savings (all utilities)	5%



On-site Generation Potential

Photovoltaic	High
Combined Heat and Power	None

¹ Incentives are based on previously run state rebate programs. Contact your utility provider for current program incentives that may apply.

² A cost-effective measure is defined as one where the simple payback does not exceed two-thirds of the expected proposed equipment useful life. Simple payback is based on the net measure cost after potential incentives.

#	Energy Conservation Measure	Cost Effective?	Annual Electric Savings (kWh)	Peak Demand Savings (kW)	Annual Fuel Savings (MMBtu)	Annual Energy Cost Savings (\$)	Estimated M&L Cost (\$)	Estimated Incentive (\$)*	Estimated Net M&L Cost (\$)	Simple Payback Period (yrs)**	CO ₂ e Emissions Reduction (lbs)
Lighting Upgrades			69,917	17.8	-25	\$8,015	\$45,320	\$8,591	\$36,729	4.6	66,278
ECM 1	Install LED Fixtures	Yes	7,643	0.0	0	\$938	\$4,147	\$550	\$3,597	3.8	7,697
ECM 2	Retrofit Fluorescent Fixtures with LED Lamps and Drivers	Yes	6,768	2.1	-3	\$767	\$5,070	\$505	\$4,565	6.0	6,352
ECM 3	Retrofit Fixtures with LED Lamps	Yes	55,506	15.7	-22	\$6,310	\$36,103	\$7,536	\$28,567	4.5	52,230
Lighting Control Measures			27,101	7.6	-11	\$3,072	\$38,133	\$8,815	\$29,318	9.5	25,436
ECM 4	Install Occupancy Sensor Lighting Controls	Yes	21,733	6.3	-9	\$2,464	\$32,058	\$4,080	\$27,978	11.4	20,398
ECM 5	Install High/Low Lighting Controls	Yes	5,367	1.3	-2	\$608	\$6,075	\$4,735	\$1,340	2.2	5,038
Variable Frequency Drive (VFD) Measures			5,313	1.7	0	\$652	\$9,110	\$400	\$8,710	13.4	5,350
ECM 6	Install VFDs on Constant Volume (CV) Fans	No	5,313	1.7	0	\$652	\$9,110	\$400	\$8,710	13.4	5,350
Unitary HVAC Measures			8,041	10.1	0	\$986	\$56,382	\$2,163	\$54,219	55.0	8,097
ECM 7	Install High Efficiency Air Conditioning Units	No	6,734	8.4	0	\$826	\$47,105	\$2,163	\$44,942	54.4	6,781
ECM 8	Install High Efficiency Heat Pumps	No	1,307	1.6	0	\$160	\$9,277	\$0	\$9,277	57.9	1,316
Fuel Oil Heating (HVAC/Process) Replacement			0	0.0	226	\$5,030	\$128,073	\$7,150	\$120,923	24.0	36,922
ECM 9	Install High Efficiency Hot Water Boilers	No	0	0.0	226	\$5,030	\$128,073	\$7,150	\$120,923	24.0	36,922
Domestic Water Heating Upgrade			0	0.0	2	\$118	\$153	\$10	\$143	1.2	247
ECM 10	Install Low-Flow DHW Devices	Yes	0	0.0	2	\$118	\$153	\$10	\$143	1.2	247
TOTALS (COST EFFECTIVE MEASURES)			97,017	25.4	-35	\$11,205	\$83,606	\$17,416	\$66,190	5.9	91,961
TOTALS (ALL MEASURES)			110,371	37.2	191	\$17,873	\$277,171	\$27,128	\$250,042	14.0	142,330

* - All incentives presented in this table are included as placeholders for planning purposes and are based on previously run state rebate programs. Contact your utility provider for details on current programs.

** - Simple Payback Period is based on net measure costs (i.e. after incentives).

Figure 2 – Evaluated Energy Improvements

For more detail on each evaluated energy improvement and a break out of cost-effective improvements, see **Section 4: Energy Conservation Measures**.

1.1 Planning Your Project

Careful planning makes for a successful energy project. When considering this scope of work, you will have some decisions to make, such as:

- ◆ How will the project be funded and/or financed?
- ◆ Is it best to pursue individual ECMs, groups of ECMs, or use a comprehensive approach where all ECMs are installed together?
- ◆ Are there other facility improvements that should happen at the same time?

Pick Your Installation Approach

Utility-run energy efficiency programs and New Jersey's Clean Energy Programs, give you the flexibility to do a little or a lot. Rebates, incentives, and financing are available to help reduce both your installation costs and your energy bills. If you are planning to take advantage of these programs, make sure to review incentive program guidelines before proceeding. This is important because in most cases you will need to submit applications for the incentives before purchasing materials or starting installation.

Options from Your Utility Company

Prescriptive and Custom Rebates

For facilities wishing to pursue only selected individual measures (or planning to phase implementation of selected measures over multiple years), incentives are available through the Prescriptive and Custom Rebates program. To participate, you can use internal resources or an outside firm or contractor to perform the final design of the ECM(s) and install the equipment. Program pre-approval may be required for some incentives. Contact your utility company for more details prior to project installation.

Direct Install

The Direct Install program provides turnkey installation of multiple measures through an authorized contractor. This program can provide incentives up to 70% or 80% of the cost of selected measures. A Direct Install contractor will assess and verify individual measure eligibility and perform the installation work. The Direct Install program is available to sites with an average peak demand of less than 200 kW.

Engineered Solutions

The Engineered Solutions program provides tailored energy-efficiency assistance and turnkey engineering services to municipalities, universities, schools, hospitals, and healthcare facilities (MUSH), non-profit entities, and multifamily buildings. The program provides all professional services from audit, design, construction administration, to commissioning and measurement and verification for custom whole-building energy-efficiency projects. Engineered Solutions allows you to install as many measures as possible under a single project as well as address measures that may not qualify for other programs.

For more details on these programs please contact your utility provider.

Options from New Jersey's Clean Energy Program

Financing and Planning Support with the Energy Savings Improvement Program (ESIP)

For larger facilities with limited capital availability to implement ECMs, project financing may be available through the ESIP. Supported directly by the NJBPU, ESIP provides government agencies with project development, design, and implementation support services, as well as attractive financing for implementing ECMs. You have already taken the first step as an LGEA customer, because this report is required to participate in ESIP.

Resiliency with Return on Investment through Combined Heat and Power (CHP)

The CHP program provides incentives for combined heat and power (i.e., cogeneration) and waste heat to power projects. Combined heat and power systems generate power on-site and recover heat from the generation system to meet on-site thermal loads. Waste heat to power systems use waste heat to generate power. You will work with a qualified developer who will design a system that meets your building's heating and cooling needs.

Successor Solar Incentive Program (SuSI)

New Jersey is committed to supporting solar energy. Solar projects help the state reach the renewable goals outlined in the state's Energy Master Plan. The SuSI program is used to register and certify solar projects in New Jersey. Rebates are not available, but certified solar projects are able to earn one SREC II (Solar Renewable Energy Certificates II) for each megawatt-hour of solar electricity produced from a qualifying solar facility.

Ongoing Electric Savings with Demand Response

The Demand Response Energy Aggregator program reduces electric loads at commercial facilities when wholesale electricity prices are high or when the reliability of the electric grid is threatened due to peak power demand. By enabling commercial facilities to reduce electric demand during times of peak demand, the grid is made more reliable, and overall transmission costs are reduced for all ratepayers. Curtailment service providers provide regular payments to medium and large consumers of electric power for their participation in demand response (DR) programs. Program participation is voluntary, and facilities receive payments regardless of whether they are called upon to curtail their load during times of peak demand.

Large Energy User Program (LEUP)

LEUP is designed to promote self-investment in energy efficiency. It incentivizes owners/users of buildings to upgrade or install energy conserving measures in existing buildings to help offset the capital costs associated with the project. The efficiency upgrades are customized to meet the requirements of the customers' existing facilities, while advancing the State's energy efficiency, conservation, and greenhouse gas reduction goals.

For more details on these programs please visit [New Jersey's Clean Energy Program website](#) .



2 EXISTING CONDITIONS

The New Jersey Board of Public Utilities (NJBP) has sponsored this Local Government Energy Audit (LGEA) report for Mansfield Elementary School. This report provides information on how your facility uses energy, identifies energy conservation measures (ECMs) that can reduce your energy use, and provides information and assistance to help you implement the ECMs.

TRC conducted this study as part of a comprehensive effort to assist New Jersey educational and local government facilities in controlling energy costs and protecting our environment by offering a wide range of energy management options and advice.

2.1 Site Overview

On May 2, 2023, TRC performed an energy audit at Mansfield Elementary School located in Port Murray, New Jersey. TRC met with facility staff to review the facility operations and help focus our investigation on specific energy-using systems.

Mansfield Elementary School is a one-story, 93,515 square foot building built in 1963. Spaces include classrooms, gymnasium, offices, cafeteria, corridors, commercial kitchen, and mechanical space.

2.2 Building Occupancy

The school is fully occupied from September through June. Typical weekday occupancy is 80 staff and 600 students. Summer occupancy includes a summer day camp and continuing maintenance activities. There are no weekend activities.

Building Name	Weekday/Weekend	Operating Schedule
Mansfield Elementary School	Weekday	6:00 AM - 6:00 PM
	Weekend	Closed

Figure 3 - Building Occupancy Schedule

2.3 Building Envelope

Building walls are concrete block over structural steel with a brick facade. The roof is flat and covered with black membrane, and it is in fair condition. The walls are made of concrete masonry units (CMUs) with a brick veneer and painted CMU interior finish. The flat roof is supported with steel trusses and a metal deck and finished with an insulated layer and a covering of EPDM.



Building Façade



Roof



Interior Gymnasium

Most of the windows are double glazed and have aluminum frames with a thermal break. The glass-to-frame seals are in fair condition. The operable window weather seals are in fair condition, showing little evidence of excessive wear. Exterior doors have aluminum frames and are in fair condition with undamaged door seals. Degraded window and door seals increase drafts and outside air infiltration.



Windows

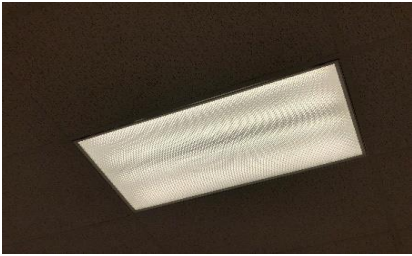


Exterior Doors

2.4 Lighting Systems

The primary interior lighting system uses 32-Watt linear fluorescent T8 lamps. There are also several 34-Watt T12 fixtures. Fixture types include 1-lamp, 2-lamp, 3-lamp, or 4-lamp, 4-foot-long recessed troffer, and surface mounted fixtures and 2-foot fixtures with U-bend tube lamps. Typically, T8 fluorescent lamps use electronic ballasts and T12 fluorescent lamps use less efficient magnetic ballasts. Several of the classrooms have 28-Watt linear fluorescent T5 lamps.

Fixtures have been upgraded to LED recessed troffers in corridors and some offices, restrooms, storage rooms, and a few classrooms. Additionally, there are some compact fluorescent lamps (CFL) plug-ins, CFL spiral lamps, and incandescent general-purpose lamps. Gymnasium fixtures have manually controlled high bay linear fluorescent fixture. All exit signs are LED. Most fixtures are in fair condition. Interior lighting levels were generally sufficient.



Recessed Troffer



CFL Plug In



Exit Sign

Lighting fixtures are controlled by wall switches or circuit breakers.



Wall Switches

Exterior fixtures include LED wall packs, floodlights, and canopy lights as well as wall packs and floodlights with high intensity discharge (HID) lamps. Exterior fixtures are photocell controlled.



Wall Packs



Floodlight Fixtures



The site has pole-mounted LED fixtures illuminating the grounds and parking lots throughout the complex. The site lighting is fed from the main campus electric meter. Fixtures are controlled by a photocell.



Pole Top Fixtures



2.5 Air Handling Systems

Unit Ventilators

Unit ventilators are equipped with supply fan motors, electronically controlled outside air dampers, and fan coil valves connected to the hot water distribution system. They provide heating, cooling, and ventilation to classrooms. This system is original to the building and appears to be in fair operating condition. Most units have a DX coil connected to a condenser installed on the rooftop. A few of the units have condensers built into the unit ventilator.



Unit Ventilators

Unitary Electric HVAC Equipment

Select rooms are conditioned by ductless mini split units for cooling. These vary in capacity between 1.46 tons and 2.75 tons. Most of the units have reached the end of their useful life. They range in efficiency between 8.3 EER to 12.7 EER.



Outdoor Condensing Units

Indoor Evaporator

Unitary Heating Equipment

The generator room is heated by a 5-kW electric resistance heater controlled by a manual dial thermostat. This unit is in fair condition.

Packaged Units

Select areas are served by cooling-only packaged roof top units (RTUs). These units range in size from 5 tons to 10 tons of cooling with an EER between 11.1 and 13. These units are equipped with economizers that are in fair condition.

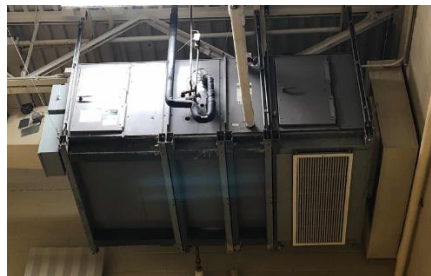


Packaged Roof Top Units (RTUs)

Air Handling Units (AHUs)

The gymnasium, cafeteria, and a few offices are conditioned by air handling units. The units have a hot water heating coil and a supply motor.

The HVAC systems are controlled by the facility BAS.



Air Handling Units (AHUs)

2.6 Heating Hot Water Systems

Two Burnham 3,447 MBh oil-fired hot water boilers serve the building heating load. The burners are non-modulating with a nominal efficiency of 80%. The boilers are configured in a lead-lag control scheme. Only one boiler is required under high load conditions. They are in good condition. There is a service contract in place.

The hydronic distribution system is a two-pipe, heating-only system.

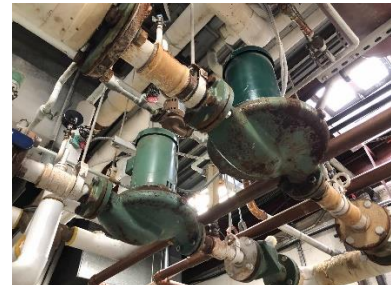
The boilers are configured in a constant flow primary distribution with three sets of pumps: two, 5 hp, two, 5 hp; and 2 hp constant speed hot water pumps operating with an automated control scheme. The boilers provide hot water to unit ventilators and AHUs throughout the building.



Hot Water Boiler

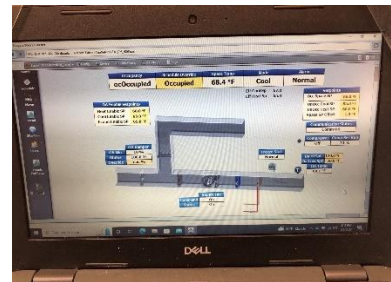
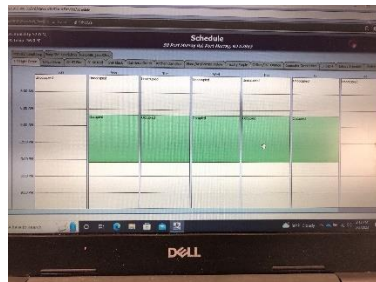


Heating Hot Water Pumps



2.7 Building Automation System (BAS)

A Niagara BAS controls the HVAC equipment, boilers, air handlers, and package units. The BAS provides equipment scheduling control and monitors and controls space temperatures, supply air temperatures, humidity, and heating water loop temperatures.



Building Management System

2.8 Domestic Hot Water

Hot water is produced by a propane-fired 300 MBh, 80% efficient boiler connected to a 140-gallon storage tank. One fractional hp circulation pump distributes water to end uses. The circulation pump operates continuously.



Hot Water Boiler



Circulation Pump

2.9 Food Service Equipment

The kitchen has all-electric equipment that is used to prepare meals for students. Most cooking is done using an electric oven. Bulk prepared foods are held in several electric holding cabinets. Equipment is not high efficiency and is in fair condition.

The dishwasher is a non-ENERGY STAR high temperature, door type unit with a 24-kW electric booster water heater.

Visit https://www.energystar.gov/products/commercial_food_service_equipment for the latest information on high efficiency food service equipment.



Ovens

Holding Cabinet

2.10 Refrigeration

The kitchen has a stand-up refrigerator and a freezer with solid doors. There are freezer chests as well as many refrigerator chests. Most equipment is standard efficiency and in fair condition.

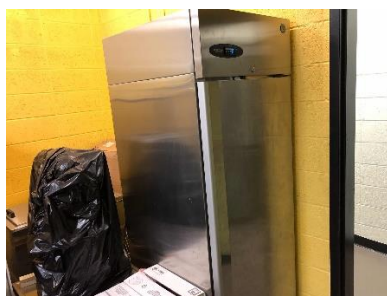
The walk-in refrigerator has an estimated 0.57-ton compressor located on the roof and a two-fan evaporator.

The walk-in medium temperature freezer has a 0.32-ton compressor located on the roof and a one-fan evaporator.

Visit https://www.energystar.gov/products/commercial_food_service_equipment for the latest information on high efficiency food service equipment.



Walk-in Refrigerators



Stand up Freezer



Refrigerated Chest

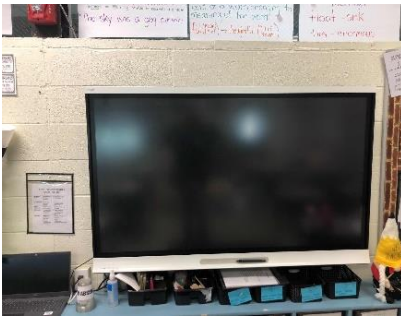
2.11 Plug Load and Vending Machines

The location is doing a great job managing the electrical plug loads. This report makes additional suggestions for ECMs in this area as well as energy efficient best practices.

There are 29 computer workstations and 800 laptops throughout the facility. Plug loads include general cafe and office equipment. There are typical classroom loads such as smartboards, projectors, and fans.

There are several residential-style and mini refrigerators throughout the building. These vary in condition and efficiency.

There is one refrigerated beverage vending machine and one non-refrigerated vending machines. Vending machines are not equipped with occupancy-based controls.



Smartboard



Kiln



Copiers

2.12 Water-Using Systems

There are 22 restrooms with toilets, urinals, and sinks. Faucet flow rates are at 1.5 gallons per minute (gpm) or higher.



Classroom Sink



Lavatory Sink



Kitchen Sink

2.13 On-Site Generation

Mansfield Elementary School has an emergency generator that, in the event of a power outage, serves critical services (lighting, elevator, heating-boiler and pumps) and is only used for emergency needs.

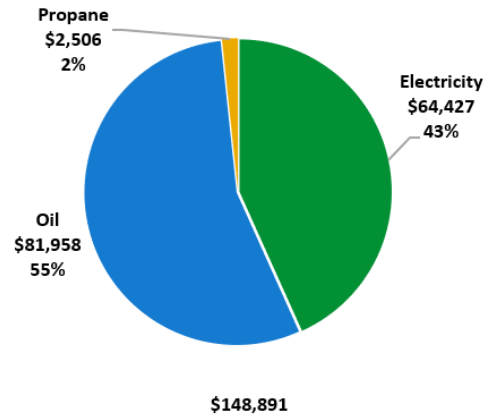


Propane-fired Generator

3 ENERGY USE AND COSTS

Twelve months of utility billing data are used to develop annual energy consumption and cost data. This information creates a profile of the annual energy consumption and energy costs.

Utility Summary		
Fuel	Usage	Cost
Electricity	525,168 kWh	\$64,427
No. 2 Fuel Oil	26,532 Gallons	\$81,958
Propane	406 Gallons	\$2,506
Total		\$148,891



An energy balance identifies and quantifies energy use in your various building systems. This can highlight areas with the most potential for improvement. This energy balance was developed using calculated energy use for each of the end uses noted in the figure.

The energy auditor collects information regarding equipment operating hours, capacity, efficiency, and other operational parameters from facility staff, drawings, and on-site observations. This information is used as the inputs to calculate the existing conditions energy use for the site. The calculated energy use is then compared to the historical energy use and the initial inputs are revised, as necessary, to balance the calculated energy use to the historical energy use.

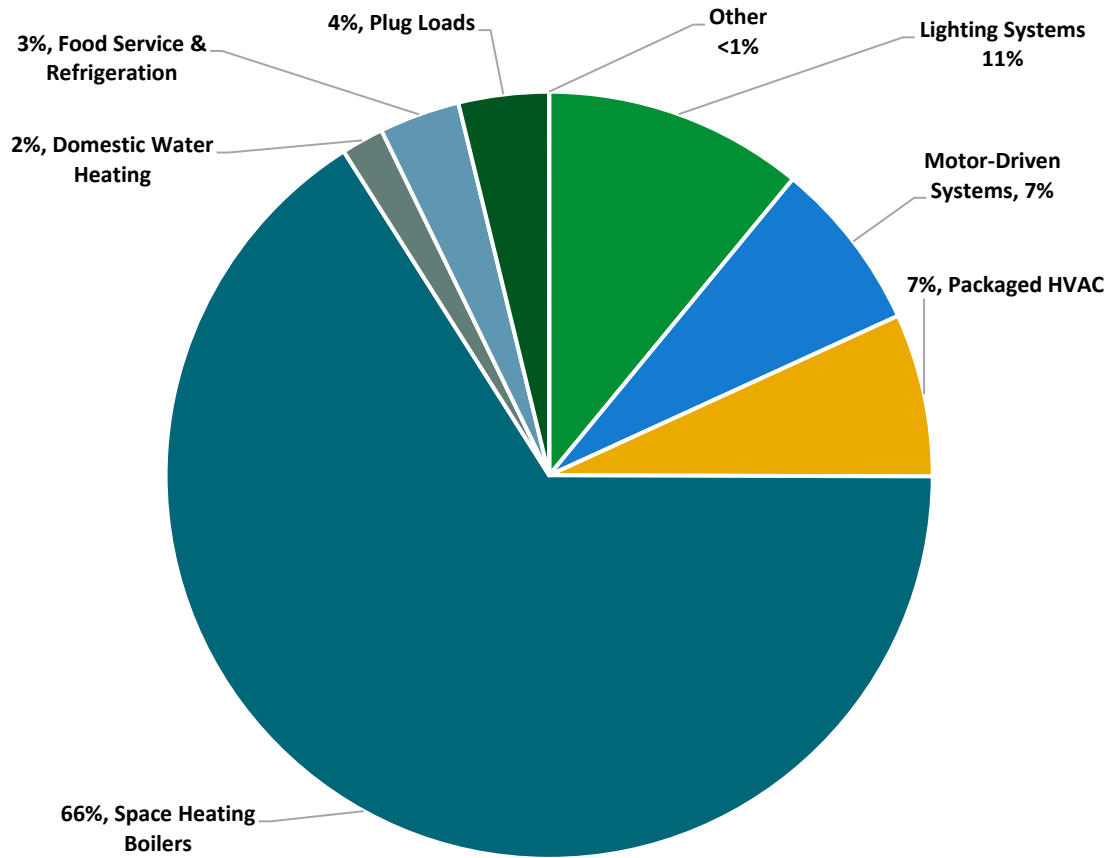
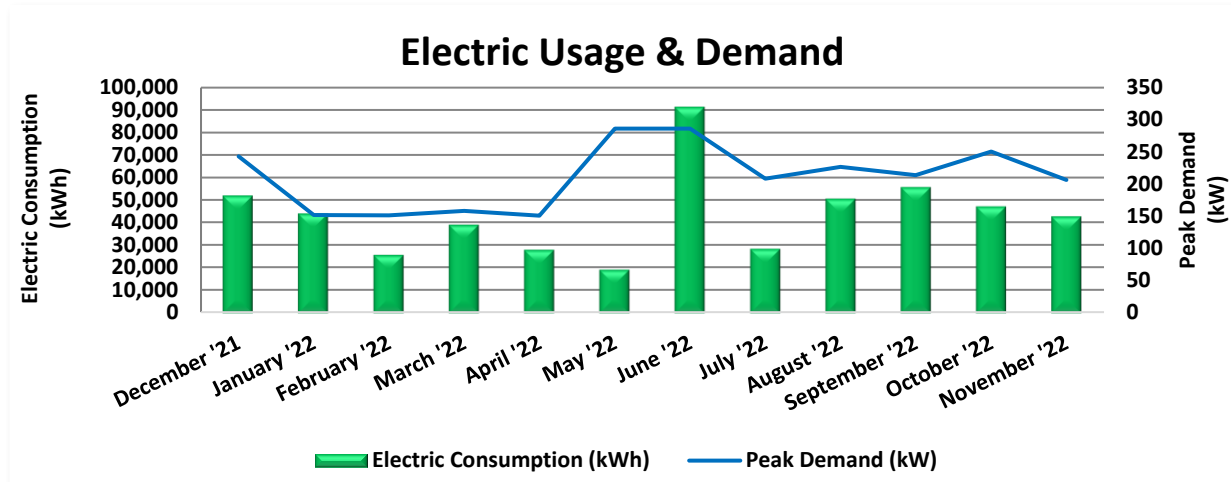


Figure 4 - Energy Balance

3.1 Electricity

JCP&L delivers electricity under rate class General Service Secondary, with electric production provided by Direct Energy, a third-party supplier.



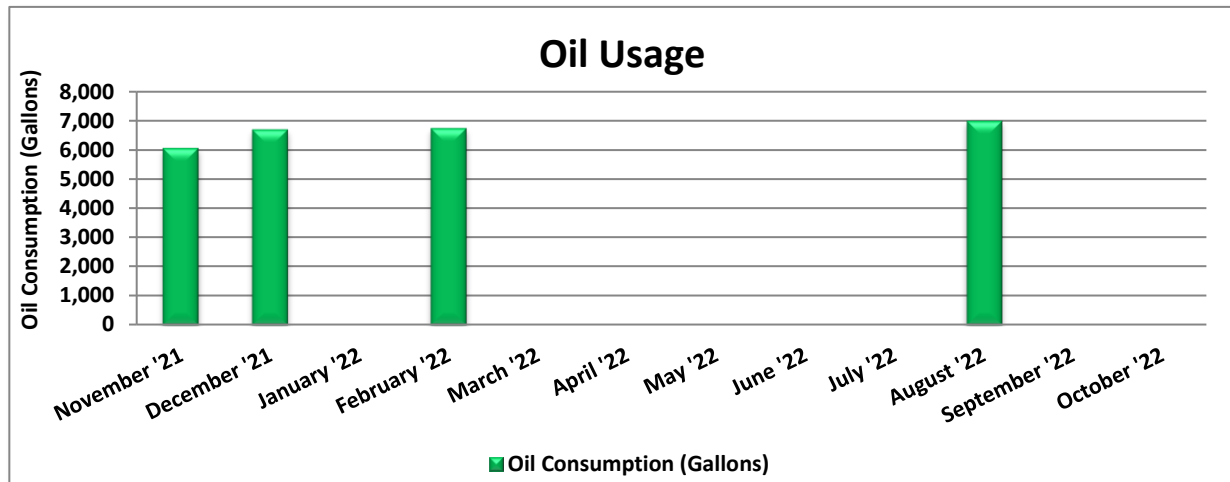
Electric Billing Data					
Period Ending	Days in Period	Electric Usage (kWh)	Demand (kW)	Demand Cost	Total Electric Cost
12/30/21	30	52,089	243	\$1,795	\$6,376
1/27/22	28	44,145	151	\$1,116	\$5,018
2/28/22	32	25,901	151	\$1,116	\$3,460
3/31/22	31	39,168	158	\$1,166	\$4,602
5/2/22	32	28,126	150	\$1,110	\$3,608
5/31/22	29	19,340	286	\$1,027	\$2,792
7/1/22	31	91,290	286	\$2,265	\$10,212
8/1/22	31	28,556	208	\$1,647	\$4,201
9/1/22	31	50,670	226	\$1,793	\$6,232
10/3/22	32	55,772	214	\$1,576	\$6,488
10/31/22	28	47,272	250	\$1,848	\$6,071
11/30/22	30	42,839	206	\$1,526	\$5,365
Totals	365	525,168	286	\$17,985	\$64,427
Annual	365	525,168	286	\$17,985	\$64,427

Notes:

- Peak demand of 286 kW occurred in May '22.
- Average demand over the past 12 months was 211 kW.
- The average electric cost over the past 12 months was \$0.123/kWh, which is the blended rate that includes energy supply, distribution, demand, and other charges. This report uses this blended rate to estimate energy cost savings.

3.2 No. 2 Fuel Oil

Allied Oil delivers no. 2 fuel oil to the project site.



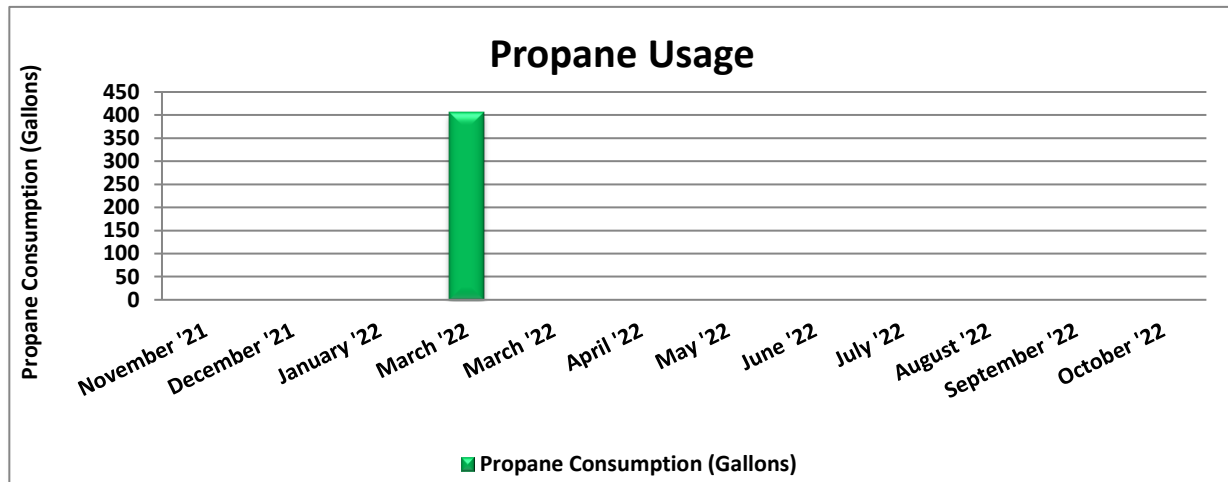
No. 2 Fuel Oil Billing Data			
Period Ending	Days in Period	Oil Usage (Gallons)	Fuel Cost
12/1/21	30	6,073	\$12,914
1/1/22	31	6,706	\$17,718
2/1/22	31	0	\$0
3/1/22	28	6,753	\$24,820
4/1/22	31	0	\$0
5/1/22	30	0	\$0
6/1/22	31	0	\$0
7/1/22	30	0	\$0
8/1/22	31	0	\$0
9/1/22	31	7,000	\$26,506
10/1/22	30	0	\$0
11/1/22	31	0	\$0
Totals	365	26,532	\$81,958
Annual	365	26,532	\$81,958

Notes:

- The average no. 2 fuel oil cost for the past 12 months is \$3.089/Gallon, which is the blended rate used throughout the analysis.
- Fuel deliveries do not necessarily correspond to periods of use.

3.3 Propane

AmeriGas delivers propane to the project site.



Propane Billing Data			
Period Ending	Days in Period	Propane Usage (Gallons)	Fuel Cost
12/1/21	30		
1/1/22	31		
2/1/22	31		
3/28/22	55	406	\$2,506
4/1/22	4		
5/1/22	30		
6/1/22	31		
7/1/22	30		
8/1/22	31		
9/1/22	31		
10/1/22	30		
11/1/22	31		
Totals	365	406	\$2,506
Annual	365	406	\$2,506

Notes:

- The average propane cost for the past 12 months is \$6.177/Gallon, which is the blended rate used throughout the analysis.
- Fuel deliveries do not necessarily correspond to periods of use.

3.4 Benchmarking

Your building was benchmarked using the United States Environmental Protection Agency's (EPA) *Portfolio Manager*® software. Benchmarking compares your building's energy use to that of similar buildings across the country, while neutralizing variations due to location, occupancy, and operating hours. Some building types can be scored with a 1-100 ranking of a building's energy performance relative to the national building market. A score of 50 represents the national average and a score of 100 is best.

This ENERGY STAR benchmarking score provides a comprehensive snapshot of your building's energy performance. It assesses the building's physical assets, operations, and occupant behavior, which is compiled into a quick and easy-to-understand score.

Benchmarking Score

71

Congratulations, your building performs better than the national average. This report has suggestions about how to keep your building running efficiently, further improve performance, and lower your energy bills even more.

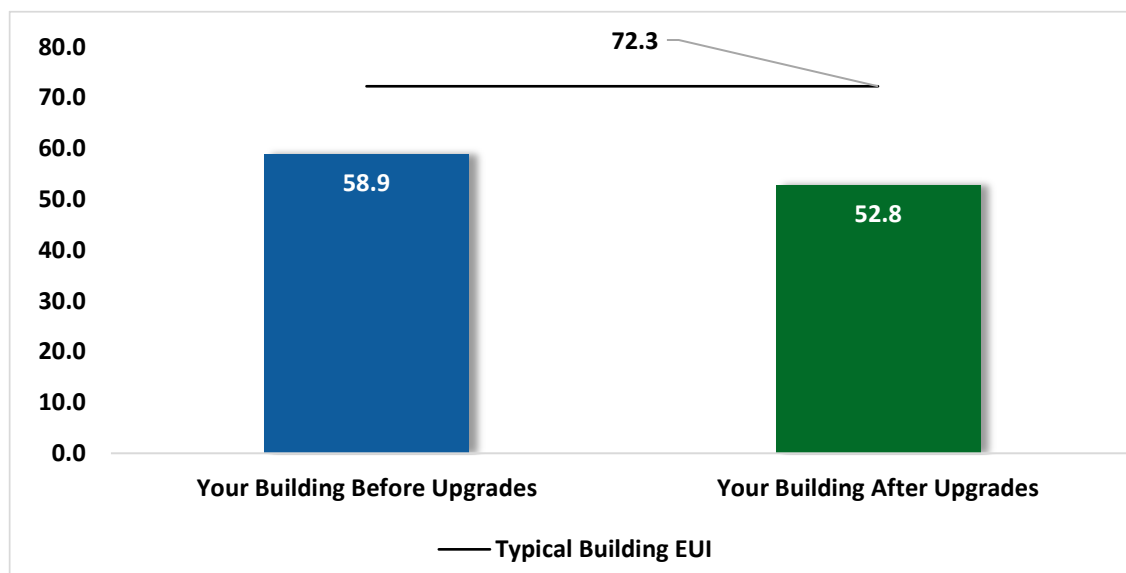


Figure 5 - Energy Use Intensity Comparison³

Energy use intensity (EUI) measures energy consumption per square foot and is the standard metric for comparing buildings' energy performance. A lower EUI means better performance and less energy consumed. Several factors can cause a building to vary from typical energy usage. Local weather conditions, building age and insulation levels, equipment efficiency, daily occupancy hours, changes in occupancy throughout the year, equipment operating hours, and occupant behavior all contribute to a building's energy use and the benchmarking score.

³ Based on all evaluated ECMs



Tracking Your Energy Performance

Keeping track of your energy use on a monthly basis is one of the best ways to keep energy costs in check. Update your utility information in Portfolio Manager regularly, so that you can keep track of your building's performance.

We have created a Portfolio Manager account for your facility and have already entered the monthly utility data shown above for you. Account login information for your account will be sent via email.

Free online training is available to help you use ENERGY STAR Portfolio Manager to track your building's performance at: <https://www.energystar.gov/buildings/training>.

For more information on ENERGY STAR and Portfolio Manager, visit their [website](#).

4 ENERGY CONSERVATION MEASURES

The goal of this audit report is to identify and evaluate potential energy efficiency improvements and provide information about the cost effectiveness of those improvements. Most energy conservation measures have received preliminary analysis of feasibility, which identifies expected ranges of savings. This level of analysis is typically sufficient to demonstrate project cost-effectiveness and help prioritize energy measures.

Calculations of energy use and savings are based on the current version of the *New Jersey's Clean Energy Program Protocols to Measure Resource Savings*, which is approved by the NJBPU. Further analysis or investigation may be required to calculate more precise savings based on specific circumstances.

Operation and maintenance costs for the proposed new equipment will generally be lower than the current costs for the existing equipment—especially if the existing equipment is at or past its normal useful life. We have conservatively assumed there to be no impact on overall maintenance costs over the life of the equipment.

Financial incentives in this report are based on the previously run state rebate program SmartStart, which has been retired. Now, all investor-owned gas and electric utility companies are offering complementary energy efficiency programs directly to their customers. Some measures and proposed upgrades may be eligible for higher incentives than those shown below. The incentives in the summary tables should be used for high-level planning purposes. To verify incentives, reach out to your utility provider or visit the [NJCEP website](#) for more information.

For a detailed list of the locations and recommended energy conservation measures for all inventoried equipment, see Appendix A: Equipment Inventory & Recommendations.

#	Energy Conservation Measure	Cost Effective?	Annual Electric Savings (kWh)	Peak Demand Savings (kW)	Annual Fuel Savings (MMBtu)	Annual Energy Cost Savings (\$)	Estimated M&L Cost (\$)	Estimated Incentive (\$)*	Estimated Net M&L Cost (\$)	Simple Payback Period (yrs)**	CO ₂ e Emissions Reduction (lbs)
Lighting Upgrades			69,917	17.8	-25	\$8,015	\$45,320	\$8,591	\$36,729	4.6	66,278
ECM 1	Install LED Fixtures	Yes	7,643	0.0	0	\$938	\$4,147	\$550	\$3,597	3.8	7,697
ECM 2	Retrofit Fluorescent Fixtures with LED Lamps and Drivers	Yes	6,768	2.1	-3	\$767	\$5,070	\$505	\$4,565	6.0	6,352
ECM 3	Retrofit Fixtures with LED Lamps	Yes	55,506	15.7	-22	\$6,310	\$36,103	\$7,536	\$28,567	4.5	52,230
Lighting Control Measures			27,101	7.6	-11	\$3,072	\$38,133	\$8,815	\$29,318	9.5	25,436
ECM 4	Install Occupancy Sensor Lighting Controls	Yes	21,733	6.3	-9	\$2,464	\$32,058	\$4,080	\$27,978	11.4	20,398
ECM 5	Install High/Low Lighting Controls	Yes	5,367	1.3	-2	\$608	\$6,075	\$4,735	\$1,340	2.2	5,038
Variable Frequency Drive (VFD) Measures			5,313	1.7	0	\$652	\$9,110	\$400	\$8,710	13.4	5,350
ECM 6	Install VFDs on Constant Volume (CV) Fans	No	5,313	1.7	0	\$652	\$9,110	\$400	\$8,710	13.4	5,350
Unitary HVAC Measures			8,041	10.1	0	\$986	\$56,382	\$2,163	\$54,219	55.0	8,097
ECM 7	Install High Efficiency Air Conditioning Units	No	6,734	8.4	0	\$826	\$47,105	\$2,163	\$44,942	54.4	6,781
ECM 8	Install High Efficiency Heat Pumps	No	1,307	1.6	0	\$160	\$9,277	\$0	\$9,277	57.9	1,316
Fuel Oil Heating (HVAC/Process) Replacement			0	0.0	226	\$5,030	\$128,073	\$7,150	\$120,923	24.0	36,922
ECM 9	Install High Efficiency Hot Water Boilers	No	0	0.0	226	\$5,030	\$128,073	\$7,150	\$120,923	24.0	36,922
Domestic Water Heating Upgrade			0	0.0	2	\$118	\$153	\$10	\$143	1.2	247
ECM 10	Install Low-Flow DHW Devices	Yes	0	0.0	2	\$118	\$153	\$10	\$143	1.2	247
TOTALS			110,371	37.2	191	\$17,873	\$277,171	\$27,128	\$250,042	14.0	142,330

* - All incentives presented in this table are included as placeholders for planning purposes and are based on previously run state rebate programs. Contact your utility provider for details on current programs.

** - Simple Payback Period is based on net measure costs (i.e. after incentives).

Figure 6 – All Evaluated ECMs

#	Energy Conservation Measure	Annual Electric Savings (kWh)	Peak Demand Savings (kW)	Annual Fuel Savings (MMBtu)	Annual Energy Cost Savings (\$)	Estimated M&L Cost (\$)	Estimated Incentive (\$)*	Estimated Net M&L Cost (\$)	Simple Payback Period (yrs)**	CO ₂ e Emissions Reduction (lbs)
Lighting Upgrades		69,917	17.8	-25	\$8,015	\$45,320	\$8,591	\$36,729	4.6	66,278
ECM 1	Install LED Fixtures	7,643	0.0	0	\$938	\$4,147	\$550	\$3,597	3.8	7,697
ECM 2	Retrofit Fluorescent Fixtures with LED Lamps and Drivers	6,768	2.1	-3	\$767	\$5,070	\$505	\$4,565	6.0	6,352
ECM 3	Retrofit Fixtures with LED Lamps	55,506	15.7	-22	\$6,310	\$36,103	\$7,536	\$28,567	4.5	52,230
Lighting Control Measures		27,101	7.6	-11	\$3,072	\$38,133	\$8,815	\$29,318	9.5	25,436
ECM 4	Install Occupancy Sensor Lighting Controls	21,733	6.3	-9	\$2,464	\$32,058	\$4,080	\$27,978	11.4	20,398
ECM 5	Install High/Low Lighting Controls	5,367	1.3	-2	\$608	\$6,075	\$4,735	\$1,340	2.2	5,038
Domestic Water Heating Upgrade		0	0.0	2	\$118	\$153	\$10	\$143	1.2	247
ECM 10	Install Low-Flow DHW Devices	0	0.0	2	\$118	\$153	\$10	\$143	1.2	247
TOTALS		97,017	25.4	-35	\$11,205	\$83,606	\$17,416	\$66,190	5.9	91,961

* - All incentives presented in this table are included as placeholders for planning purposes and are based on previously run state rebate programs. Contact your utility provider for details on current programs.

** - Simple Payback Period is based on net measure costs (i.e. after incentives).

Figure 7 – Cost Effective ECMs

4.1 Lighting

#	Energy Conservation Measure	Annual Electric Savings (kWh)	Peak Demand Savings (kW)	Annual Fuel Savings (MMBtu)	Annual Energy Cost Savings (\$)	Estimated M&L Cost (\$)	Estimated Incentive (\$)*	Estimated Net M&L Cost (\$)	Simple Payback Period (yrs)**	CO ₂ e Emissions Reduction (lbs)
Lighting Upgrades		69,917	17.8	-25	\$8,015	\$45,320	\$8,591	\$36,729	4.6	66,278
ECM 1	Install LED Fixtures	7,643	0.0	0	\$938	\$4,147	\$550	\$3,597	3.8	7,697
ECM 2	Retrofit Fluorescent Fixtures with LED Lamps and Drivers	6,768	2.1	-3	\$767	\$5,070	\$505	\$4,565	6.0	6,352
ECM 3	Retrofit Fixtures with LED Lamps	55,506	15.7	-22	\$6,310	\$36,103	\$7,536	\$28,567	4.5	52,230

When considering lighting upgrades, we suggest using a comprehensive design approach that simultaneously upgrades lighting fixtures and controls to maximize energy savings and improve occupant lighting. Comprehensive design will also consider appropriate lighting levels for different space types to make sure that the right amount of light is delivered where needed. If conversion to LED light sources is proposed, we suggest converting all of a specific lighting type (e.g., linear fluorescent) to LED lamps to minimize the number of lamp types in use at the facility, which should help reduce future maintenance costs.

ECM 1: Install LED Fixtures

Replace existing fixtures containing HID lamps with new LED light fixtures. This measure saves energy by installing LEDs, which use less power than other technologies with a comparable light output.

In some cases, HID fixtures can be retrofit with screw-based LED lamps. Replacing an existing HID fixture with a new LED fixture will generally provide better overall lighting optics; however, replacing the HID lamp with a LED screw-in lamp is typically a less expensive retrofit. We recommend you work with your lighting contractor to determine which retrofit solution is best suited to your needs and will be compatible with the existing fixture(s).

Maintenance savings may also be achieved since LED lamps last longer than other light sources and therefore do not need to be replaced as often.

Affected Building Areas: exterior fixtures

ECM 2: Retrofit Fluorescent Fixtures with LED Lamps and Drivers

Retrofit fluorescent fixtures by removing the fluorescent tubes and ballasts and replacing them with LED tubes and LED drivers (if necessary), which are designed to be used in retrofitted fluorescent fixtures.

The measure uses the existing fixture housing but replaces the electric components with more efficient lighting technology, which use less power than other lighting technologies but provides equivalent lighting output. Maintenance savings may also be achieved since LED tubes last longer than fluorescent tubes and, therefore, do not need to be replaced as often.

Affected Building Areas: all areas with fluorescent fixtures with T12 tubes

ECM 3: Retrofit Fixtures with LED Lamps

Replace fluorescent, HID, CFLs, or incandescent lamps with LED lamps. Many LED tubes are direct replacements for existing fluorescent tubes and can be installed while leaving the fluorescent fixture ballast in place. LED lamps can be used in existing fixtures as a direct replacement for most other lighting technologies. Be sure to specify replacement lamps that are compatible with existing dimming controls, where applicable. In some circumstances, you may need to upgrade your dimming system for optimum performance.

This measure saves energy by installing LEDs, which use less power than other lighting technologies yet provide equivalent lighting output for the space. Maintenance savings may also be available, as longer-lasting LEDs lamps will not need to be replaced as often as the existing lamps.

Affected Building Areas: all areas with fluorescent fixtures with T8 tubes, HID, CFLs, or incandescent lamps

4.2 Lighting Controls

#	Energy Conservation Measure	Annual Electric Savings (kWh)	Peak Demand Savings (kW)	Annual Fuel Savings (MMBtu)	Annual Energy Cost Savings (\$)	Estimated M&L Cost (\$)	Estimated Incentive (\$)*	Estimated Net M&L Cost (\$)	Simple Payback Period (yrs)**	CO ₂ e Emissions Reduction (lbs)
Lighting Control Measures		27,101	7.6	-11	\$3,072	\$38,133	\$8,815	\$29,318	9.5	25,436
ECM 4	Install Occupancy Sensor Lighting Controls	21,733	6.3	-9	\$2,464	\$32,058	\$4,080	\$27,978	11.4	20,398
ECM 5	Install High/Low Lighting Controls	5,367	1.3	-2	\$608	\$6,075	\$4,735	\$1,340	2.2	5,038

Lighting controls reduce energy use by turning off or lowering lighting fixture power levels when not in use. A comprehensive approach to lighting design should upgrade the lighting fixtures and the controls together for maximum energy savings and improved lighting for occupants.

ECM 4: Install Occupancy Sensor Lighting Controls

Install occupancy sensors to control lighting fixtures in areas that are frequently unoccupied, even for short periods. For most spaces, we recommend that lighting controls use dual technology sensors, which reduce the possibility of lights turning off unexpectedly.

Occupancy sensors detect occupancy using ultrasonic and/or infrared sensors. When an occupant enters the space, the lighting fixtures switch to full lighting levels. Most occupancy sensor lighting controls allow users to manually turn fixtures on/off, as needed. Some controls can also provide dimming options.

Occupancy sensors can be mounted on the wall at existing switch locations, mounted on the ceiling, or in remote locations. In general, wall switch replacement sensors are best suited to single occupant offices and other small rooms. Ceiling-mounted or remote mounted sensors are used in large spaces, locations without local switching, and where wall switches are not in the line-of-sight of the main work area.

This measure provides energy savings by reducing the lighting operating hours.

Affected Building Areas: offices, conference rooms, classrooms, gymnasium, library, restrooms, and storage rooms

ECM 5: Install High/Low Lighting Controls

Install occupancy sensors to provide dual level lighting control for lighting fixtures in spaces that are infrequently occupied but may require some level of continuous lighting for safety or security reasons.

Lighting fixtures with these controls operate at default low levels when the area is unoccupied to provide minimal lighting to meet security or safety code requirements for egress. Sensors detect occupancy using ultrasonic and/or infrared sensors. When an occupant enters the space, the lighting fixtures switch to full lighting levels. Fixtures automatically switch back to low level after a predefined period of vacancy. In parking lots and parking garages with significant ambient lighting, this control can sometimes be combined with photocell controls to turn the lights off when there is sufficient daylight.

The controller lowers the light level by dimming the fixture output. Therefore, the controlled fixtures need to have a dimmable ballast or driver. This will need to be considered when selecting retrofit lamps and bulbs for the areas proposed for high/low control.

For this type of measure the occupancy sensors will generally be ceiling or fixture mounted. Sufficient sensor coverage must be provided to ensure that lights turn on in each area as occupants approach the area.

This measure provides energy savings by reducing the light fixture power draw when reduced light output is appropriate.

Affected Building Areas: hallways

4.3 Variable Frequency Drives (VFD)

#	Energy Conservation Measure	Annual Electric Savings (kWh)	Peak Demand Savings (kW)	Annual Fuel Savings (MMBtu)	Annual Energy Cost Savings (\$)	Estimated M&L Cost (\$)	Estimated Incentive (\$)*	Estimated Net M&L Cost (\$)	Simple Payback Period (yrs)**	CO ₂ e Emissions Reduction (lbs)
Variable Frequency Drive (VFD) Measures		5,313	1.7	0	\$652	\$9,110	\$400	\$8,710	13.4	5,350
ECM 6	Install VFDs on Constant Volume (CV) Fans	5,313	1.7	0	\$652	\$9,110	\$400	\$8,710	13.4	5,350

Variable frequency drives control motors for fans, pumps, and process equipment based on the actual output required of the driven equipment. Energy savings result from more efficient control of motor energy usage when equipment operates at partial load. The magnitude of energy savings depends on the estimated amount of time that the motor would operate at partial load. For equipment with proposed VFDs, we have included replacing the controlled motor with a new inverter duty rated motor to conservatively account for the cost of an inverter duty rated motor.

ECM 6: Install VFDs on Constant Volume (CV) Fans

Install VFDs to control constant volume fan motor speeds. This converts a constant-volume, single-zone air handling system into a variable-air-volume (VAV) system. A separate VFD is usually required to control the return fan motor or dedicated exhaust fan motor if the air handler has one.

Zone thermostats signal the VFD to adjust fan speed to maintain the appropriate temperature in the zone, while maintaining a constant supply air temperature.

VAV system controls should not raise the supply air temperature at the expense of the fan power. A common mistake is to reset the supply air temperature to achieve chiller energy savings, which can lead to additional air flow requirements. Supply air temperature should be kept low (e.g., 55°F) until the minimum fan speed (typically about 50%) is met. At this point, it is efficient to raise the supply air temperature as the load decreases, but not such that additional air flow and thus fan energy is required.

For air handlers with direct expansion (DX) cooling systems, the minimum air flow across the cooling coil required to prevent the coil from freezing must be determined during the final project design. The control system programming should maintain the minimum air flow whenever the compressor is operating. Prior to implementation, verify minimum fan speed in cooling mode with the manufacturer. Note that savings will vary depending on the operating characteristics of each AHU.

Energy savings result from reducing the fan speed (and power) when conditions allow for reduced air flow.

Affected Air Handlers: cafeteria RTU and AHU

4.4 Unitary HVAC

#	Energy Conservation Measure	Annual Electric Savings (kWh)	Peak Demand Savings (kW)	Annual Fuel Savings (MMBtu)	Annual Energy Cost Savings (\$)	Estimated M&L Cost (\$)	Estimated Incentive (\$)*	Estimated Net M&L Cost (\$)	Simple Payback Period (yrs)**	CO ₂ e Emissions Reduction (lbs)
Unitary HVAC Measures		8,041	10.1	0	\$986	\$56,382	\$2,163	\$54,219	55.0	8,097
ECM 7	Install High Efficiency Air Conditioning Units	6,734	8.4	0	\$826	\$47,105	\$2,163	\$44,942	54.4	6,781
ECM 8	Install High Efficiency Heat Pumps	1,307	1.6	0	\$160	\$9,277	\$0	\$9,277	57.9	1,316

Replacing the unitary HVAC units has a long payback period and may not be justifiable based simply on energy considerations. However, most of the units are nearing or have reached the end of their normal useful life. Typically, the marginal cost of purchasing a high efficiency unit can be justified by the marginal savings from the improved efficiency. When the split systems are eventually replaced, consider purchasing equipment that exceeds the minimum efficiency required by building codes.

ECM 7: Install High Efficiency Air Conditioning Units

Replace standard efficiency packaged air conditioning units with high efficiency packaged air conditioning units. The magnitude of energy savings for this measure depends on the relative efficiency of the older unit versus the new high efficiency unit, the average cooling and heating load, and the estimated annual operating hours.

Affected Units: split system air conditions

ECM 8: Install High Efficiency Heat Pumps

Replace standard efficiency heat pumps with high efficiency heat pumps. A higher EER or SEER rating indicates a more efficient cooling system, and a higher HSPF rating indicates more efficient heating mode. The magnitude of energy savings for this measure depends on the relative efficiency of the older unit versus the new high efficiency unit, the average heating and cooling loads, and the estimated annual operating hours.

Affected Units: ductless mini-split air conditioning units

4.5 Fuel Oil-Fired Heating

#	Energy Conservation Measure	Annual Electric Savings (kWh)	Peak Demand Savings (kW)	Annual Fuel Savings (MMBtu)	Annual Energy Cost Savings (\$)	Estimated M&L Cost (\$)	Estimated Incentive (\$)*	Estimated Net M&L Cost (\$)	Simple Payback Period (yrs)**	CO ₂ e Emissions Reduction (lbs)
	Fuel Oil Heating (HVAC/Process) Replacement	0	0.0	226	\$5,030	\$128,073	\$7,150	\$120,923	24.0	36,922
ECM 9	Install High Efficiency Hot Water Boilers	0	0.0	226	\$5,030	\$128,073	\$7,150	\$120,923	24.0	36,922

ECM 9: Install High Efficiency Hot Water Boilers

Replace older inefficient hot water boilers with high efficiency hot water boilers. Energy savings results from improved combustion efficiency and reduced standby losses at low loads.

For the purposes of this analysis, we evaluated the replacement of boilers on a one-for-one basis with equipment of the same capacity. We recommend that you work with your mechanical design team to select boilers that are sized appropriately for the heating load. In many cases installing multiple modular boilers, rather than one or two large boilers, will result in higher overall plant efficiency while providing additional system redundancy.

Replacing the boilers has a long payback and may not be justifiable based simply on energy considerations. Typically, the marginal cost of purchasing high efficiency boilers can be justified by the marginal savings from the improved efficiency. When the boiler is eventually replaced, consider purchasing boilers that exceed the minimum efficiency required by building codes. We also recommend working with your mechanical design team to determine whether the heating system can operate with return water temperatures below 130°F, which would allow the use of condensing boilers.

4.6 Domestic Water Heating

#	Energy Conservation Measure	Annual Electric Savings (kWh)	Peak Demand Savings (kW)	Annual Fuel Savings (MMBtu)	Annual Energy Cost Savings (\$)	Estimated M&L Cost (\$)	Estimated Incentive (\$)*	Estimated Net M&L Cost (\$)	Simple Payback Period (yrs)**	CO ₂ e Emissions Reduction (lbs)
	Domestic Water Heating Upgrade	0	0.0	2	\$118	\$153	\$10	\$143	1.2	247
ECM 10	Install Low-Flow DHW Devices	0	0.0	2	\$118	\$153	\$10	\$143	1.2	247

ECM 10: Install Low-Flow DHW Devices

Install low-flow devices to reduce overall hot water demand. The following low-flow devices are recommended to reduce hot water usage:

Device	Flow Rate
Faucet aerators (lavatory)	0.5 gpm
Faucet aerator (kitchen)	1.5 gpm
Showerhead	2.0 gpm
Pre-rinse spray valve (kitchen)	1.28 gpm

Low-flow devices reduce the overall water flow from the fixture, while still providing adequate pressure for washing. Additional cost savings may result from reduced water usage.

5 ENERGY EFFICIENT BEST PRACTICES

A whole building maintenance plan will extend equipment life; improve occupant comfort, health, and safety; and reduce energy and maintenance costs.

Operation and maintenance (O&M) plans enhance the operational efficiency of HVAC and other energy intensive systems and could save 5%–20% of the energy usage in your building without substantial capital investment. A successful plan includes your records of energy usage trends and costs, building equipment lists, current maintenance practices, and planned capital upgrades, and it incorporates your ideas for improved building operation. Your plan will address goals for energy-efficient operation, provide detail on how to reach the goals, and outline procedures for measuring and reporting whether goals have been achieved.

You may already be doing some of these things—see our list below for potential additions to your maintenance plan. Be sure to consult with qualified equipment specialists for details on proper maintenance and system operation.

Energy Tracking with ENERGY STAR Portfolio Manager



You've heard it before—you cannot manage what you do not measure. ENERGY STAR Portfolio Manager is an online tool that you can use to measure and track energy and water consumption, as well as greenhouse gas emissions⁴. Your account has already been established. Now you can continue to keep tabs on your energy performance every month.

Lighting Maintenance



- Clean lamps, reflectors and lenses of dirt, dust, oil, and smoke buildup every six to twelve months. Light levels decrease over time due to lamp aging, lamp and ballast failure, and buildup of dirt and dust. Together, this can reduce total light output by up to 60% while still drawing full power.
- In addition to routine cleaning, developing a maintenance schedule can ensure that maintenance is performed regularly, and it can reduce the overall cost of fixture re-lamping and re-ballasting. Group re-lamping and re-ballasting maintains lighting levels and minimizes the number of site visits by a lighting technician or contractor, decreasing the overall cost of maintenance.

Lighting Controls

As part of a lighting maintenance schedule, test lighting controls to ensure proper functioning. For occupancy sensors, this requires triggering the sensor and verifying that the sensor's timer settings are correct. For daylight and photocell sensors, maintenance involves cleaning sensor lenses and confirming that setpoints and sensitivity are configured properly. Adjust exterior lighting time clock controls seasonally as needed to match your lighting requirements.

⁴ <https://www.energystar.gov/buildings/facility-owners-and-managers/existing-buildings/use-portfolio-manager>.

Motor Maintenance

Motors have many moving parts. As these parts degrade over time, the efficiency of the motor is reduced. Routine maintenance prevents damage to motor components. Routine maintenance should include cleaning surfaces and ventilation openings on motors to prevent overheating, lubricating moving parts to reduce friction, inspecting belts and pulleys for wear and to ensure they are at proper alignment and tension, and cleaning and lubricating bearings. Consult a licensed technician to assess these and other motor maintenance strategies.

Destratification Fans

For areas with high ceilings, destratification fans balance the air temperature from floor to ceiling. They help reduce the recovery time needed to warm the space after nightly temperature setbacks, and they will increase occupants' the comfort level.

Areas with high ceilings require the heating system to heat a larger volume of space than that which is occupied. As the warm air rises, the warmest space is at the ceiling level, rather than floor level. Higher temperatures at the ceiling accelerate heat loss through the roof, which requires additional energy consumption by the heating equipment to compensate for this accelerated heat transfer.

Economizer Maintenance

Economizers can significantly reduce cooling system load. A malfunctioning economizer can increase the amount of heating and mechanical cooling required by introducing excess amounts of cold or hot outside air. Common economizer malfunctions include broken outdoor thermostat or enthalpy control or dampers that are stuck or improperly adjusted.

Periodic inspection and maintenance will keep economizers working in sync with the heating and cooling system. This maintenance should be part of annual system maintenance, and it should include proper setting of the outdoor thermostat/enthalpy control, inspection of control and damper operation, lubrication of damper connections, and adjustment of minimum damper position.

AC System Evaporator/Condenser Coil Cleaning

Dirty evaporator and condenser coils restrict air flow and restrict heat transfer. This increases the loads on the evaporator and condenser fan and decreases overall cooling system performance. Keeping the coils clean allows the fans and cooling system to operate more efficiently.

HVAC Filter Cleaning and Replacement

Air filters should be checked regularly (often monthly) and cleaned or replaced when appropriate. Air filters reduce indoor air pollution, increase occupant comfort, and help keep equipment operating efficiently. If the building has a building management system, consider installing a differential pressure switch across filters to send an alarm about premature fouling or overdue filter replacement. Over time, filters become less, and less effective as particulate buildup increases. Dirty filters also restrict air flow through the air conditioning or heat pump system, which increases the load on the distribution fans.

Ductwork Maintenance

Duct maintenance has two primary goals: keep the ducts clean to avoid air quality problems and seal leaks to save energy. Check for cleanliness, obstructions that block airflow, water damage, and leaks. Ducts should be inspected at least every two years.

The biggest symptoms of clogged air ducts are differing temperatures throughout the building and areas with limited airflow from supply registers. If a particular air duct is clogged, then air flow will only be cut off to some rooms in the building—not all of them. The reduced airflow will make it more difficult for those areas to reach the temperature setpoint, which will cause the HVAC system to run longer to cool or heat that area properly. If you suspect clogged air ducts, ensure that all areas in front of supply registers are clear of items that may block or restrict air flow, and you should check for fire dampers or balancing dampers that have failed closed.

Duct leakage in commercial buildings can account for 5%–25% of the supply airflow. In the case of rooftop air handlers, duct leakage can occur to the outside of the building wasting conditioned air. Check ductwork for leakage. Eliminating duct leaks can improve ventilation system performance and reduce heating and cooling system operation.

Distribution system losses are dependent on-air system temperature, the size of the distribution system, and the level of insulation of the ductwork. Significant energy savings can be achieved when insulation has not been well maintained. When the insulation is missing or worn, the system efficiency can be significantly reduced. This measure saves energy by reducing heat transfer in the distribution system.

Boiler Maintenance

Many boiler problems develop slowly over time, so regular inspection and maintenance is essential to keeping the heating system running efficiently and preventing expensive repairs. Annual tune-ups should include a combustion analysis to analyze the exhaust from the boilers and to ensure the boiler is operating safely and efficiently. Boilers should be cleaned according to the manufacturer's instructions to remove soot and scale from the boiler sections to improve heat transfer.

Label HVAC Equipment

For improved coordination in maintenance practices, we recommend labeling or re-labeling the site HVAC equipment. Maintain continuity in labeling by following labeling conventions as indicated in the facility drawings or BAS building equipment list. Use weatherproof or heatproof labeling or stickers for permanence, but do not cover over original equipment nameplates, which should be kept clean and readable whenever possible. Besides equipment, label piping for service and direction of flow when possible. Ideally, maintain a log of HVAC equipment, including nameplate information, asset tag designation, areas served, installation year, service dates, and other pertinent information.

This investment in your equipment will enhance collaboration and communication between your staff and your contracted service providers and may help you with regulatory compliance.

Water Heater Maintenance

The lower the supply water temperature that is used for hand washing sinks, the less energy is needed to heat the water. Reducing the temperature results in energy savings and the change is often unnoticeable to users. Be sure to review the domestic water temperature requirements for sterilizers and dishwashers as you investigate reducing the supply water temperature.

Also, preventative maintenance can extend the life of the system, maintain energy efficiency, and ensure safe operation. At least once a year, follow manufacturer instructions to drain a few gallons out of the

water heater using the drain valve. If there is a lot of sediment or debris, then a full flush is recommended. Turn the temperature down and then completely drain the tank. Annual checks should include checks for:

- Leaks or heavy corrosion on the pipes and valves.
- Corrosion or wear on the gas line and on the piping. If you noticed any black residue, soot, or charred metal, this is a sign you may be having combustion issues and you should have the unit serviced by a professional.
- For electric water heaters, look for signs of leaking such as rust streaks or residue around the upper and lower panels covering the electrical components on the tank.
- For water heaters more than three years old, have a technician inspect the sacrificial anode annually.

Water Conservation



Installing dual flush or low-flow toilets and low-flow/waterless urinals are ways to reduce water use. The EPA WaterSense® ratings for urinals is 0.5 gallons per flush (gpf) and for flush valve toilets is 1.28 gpf (this is lower than the current 1.6 gpf federal standard).

For more information regarding water conservation go to the EPA's WaterSense website⁵ or download a copy of EPA's "WaterSense at Work: Best Management Practices for Commercial and Institutional Facilities"⁶ to get ideas for creating a water management plan and best practices for a wide range of water using systems.

Water conservation devices that do not reduce hot water consumption will not provide energy savings at the site level, but they may significantly affect your water and sewer usage costs. Any reduction in water use does however ultimately reduce grid-level electricity use since a significant amount of electricity is used to deliver water from reservoirs to end users.

If the facility has detached buildings with a master water meter for the entire campus, check for unnatural wet areas in the lawn or water seeping in the foundation at water pipe penetrations through the foundation. Periodically check overnight meter readings when the facility is unoccupied, and there is no other scheduled water usage.

Manage irrigation systems to use water more effectively outside the building. Adjust spray patterns so that water lands on intended lawns and plantings and not on pavement and walls. Consider installing an evapotranspiration irrigation controller that will prevent over-watering.

Procurement Strategies

Purchasing efficient products reduces energy costs without compromising quality. Consider modifying your procurement policies and language to require ENERGY STAR or WaterSense products where available.

⁵ <https://www.epa.gov/watersense>.

⁶ <https://www.epa.gov/watersense/watersense-work-0>.

6 ON-SITE GENERATION

You don't have to look far in New Jersey to see one of the thousands of solar electric systems providing clean power to homes, businesses, schools, and government buildings. On-site generation includes both renewable (e.g., solar, wind) and non-renewable (e.g., fuel cells) technologies that generate power to meet all or a portion of the facility's electric energy needs. Also referred to as distributed generation, these systems contribute to greenhouse gas (GHG) emission reductions, demand reductions, and reduced customer electricity purchases, which results in improved electric grid reliability through better use of transmission and distribution systems.

Preliminary screenings were performed to determine if an on-site generation measure could be a cost-effective solution for your facility. Before deciding to install an on-site generation system, we recommend conducting a feasibility study to analyze existing energy profiles, siting, interconnection, and the costs associated with the generation project including interconnection costs, departing load charges, and any additional special facilities charges.

6.1 Solar Photovoltaic

Photovoltaic (PV) panels convert sunlight into electricity. Individual panels are combined into an array that produces direct current (DC) electricity. The DC current is converted to alternating current (AC) through an inverter. The inverter is then connected to the building's electrical distribution system.

A preliminary screening based on the facility's electric demand, size and location of free area, and shading elements shows that the facility has high potential for installing a PV array.

The amount of free area, ease of installation (location), and the lack of shading elements contribute to the high potential. A PV array located on the roof may be feasible. If you are interested in pursuing the installation of PV, we recommend conducting a full feasibility study.

The graphic below displays the results of the PV potential screening conducted as a part of this audit. The position of each slider indicates the potential (potential increases to the right) that each factor contributes to the overall site potential.

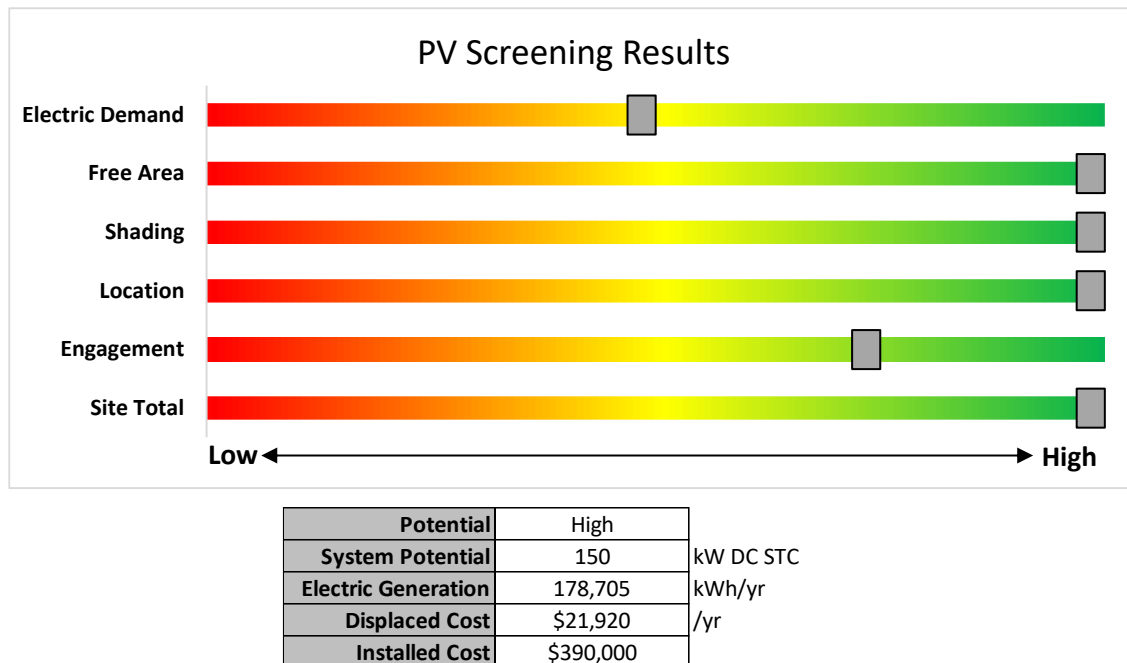


Figure 8 - Photovoltaic Screening

Successor Solar Incentive Program (SuSI)

The SuSI program replaces the SREC Registration Program (SRP) and the Transition Incentive (TI) program. The SuSI program is used to register and certify solar projects in New Jersey. Rebates are not available for solar projects. Solar projects may qualify to earn SREC- IIs (Solar Renewable Energy Certificates-II), however, the project owners *must* register their solar projects prior to the start of construction to establish the project's eligibility.

Get more information about solar power in New Jersey or find a qualified solar installer who can help you decide if solar is right for your building:

Successor Solar Incentive Program (SuSI): <https://www.njcleanenergy.com/renewable-energy/programs/susi-program>

- **Basic Info on Solar PV in NJ:** www.njcleanenergy.com/whysolar
- **NJ Solar Market FAQs:** www.njcleanenergy.com/renewable-energy/program-updates-and-background-information/solar-transition/solar-market-faqs.
- **Approved Solar Installers in the NJ Market:** www.njcleanenergy.com/commercial-industrial/programs/nj-smartstart-buildings/tools-and-resources/tradeally/approved_vendorsearch/?id=60&start=1

6.2 Combined Heat and Power

Combined heat and power (CHP) generates electricity at the facility and puts waste heat energy to good use. Common types of CHP systems are reciprocating engines, microturbines, fuel cells, backpressure steam turbines, and (at large facilities) gas turbines.

CHP systems typically produce a portion of the electric power used on-site, with the balance of electric power needs supplied by the local utility company. The heat is used to supplement (or replace) existing boilers and provide space heating and/or domestic hot water heating. Waste heat can also be routed through absorption chillers for space cooling.

The key criteria used for screening is the amount of time that the CHP system would operate at full load and the facility's ability to use the recovered heat. Facilities with a continuous need for large quantities of waste heat are the best candidates for CHP.

A preliminary screening based on heating and electrical demand, siting, and interconnection shows that the facility has no potential for installing a cost-effective CHP system.

Based on a preliminary analysis, the facility does not appear to meet the minimum requirements for a cost-effective CHP installation. The lack of gas service, low or infrequent thermal load, and lack of space for siting the equipment are the most significant factors contributing to the lack of CHP potential.

The graphic below displays the results of the CHP potential screening conducted as a part of this audit. The position of each slider indicates the potential (potential increases to the right) that each factor contributes to the overall site potential.

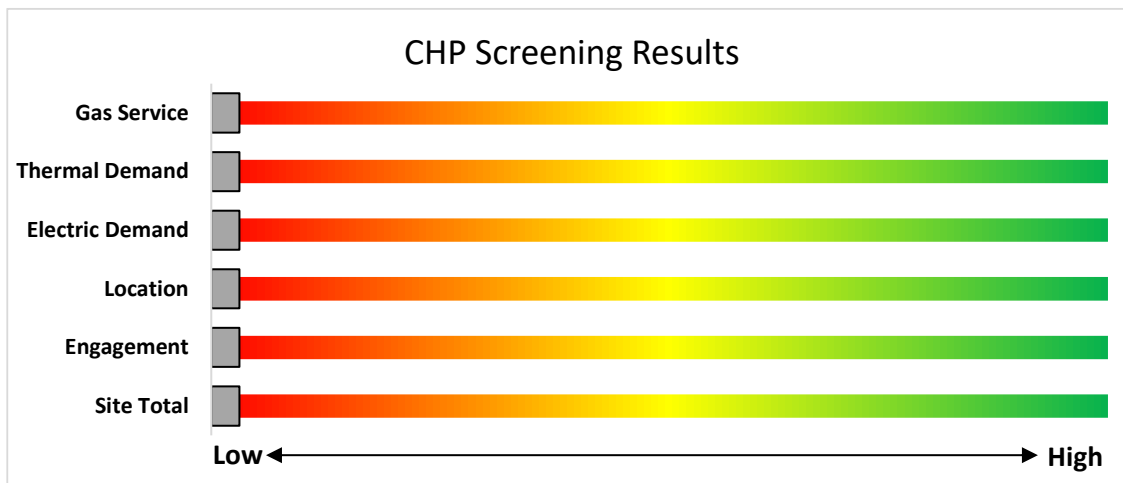


Figure 9 - Combined Heat and Power Screening

Find a qualified firm that specializes in commercial CHP cost assessment and installation:
http://www.njcleanenergy.com/commercial-industrial/programs/nj-smartstart-buildings/tools-and-resources/tradeally/approved_vendorsearch/

7 ELECTRIC VEHICLES (EV)

All electric vehicles (EVs) have an electric motor instead of an internal combustion engine. EVs function by plugging into a charge point, taking electricity from the grid, and then storing it in rechargeable batteries. Although electricity production may contribute to air pollution, the U.S. EPA categorizes all-electric vehicles as zero-emission vehicles because they produce no direct exhaust or tailpipe emissions.

EVs are typically more expensive than similar conventional and hybrid vehicles, although some cost can be recovered through fuel savings, federal tax credit, or state incentives.

7.1 Electric Vehicle Charging

EV charging stations provide a means for electric vehicle operators to recharge their batteries at a facility. While many EV drivers charge at home, others do not have access to regular home charging, and the ability to charge at work or in public locations is critical to making EVs practical for more drivers. Charging can also be used for electric fleet vehicles, which can reduce fuel and maintenance costs for fleets that replace gas or diesel vehicles with EVs.

EV charging comes in three main types. For this assessment, the screening considers addition of Level 2 charging, which is most common at workplaces and other public locations. Depending on the site type and usage, other levels of charging power may be more appropriate.

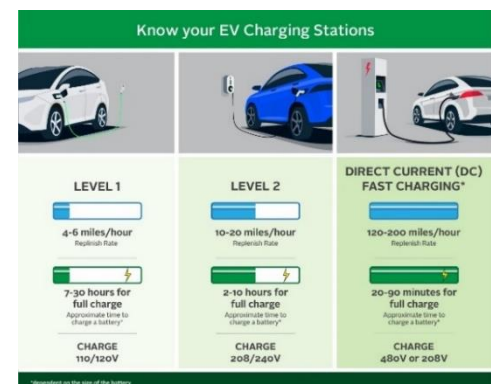
The preliminary assessment of EV charging at the facility shows that there is medium potential for adding EV chargers to the facility's parking, based on potential costs of installation and other site factors.

The primary costs associated with installing EV charging are the charger hardware and the cost to extend power from the facility to parking spaces. This may include upgrades to electric panels to serve increased loads.

The type and size of the parking area impact the costs and feasibility of adding EV charging. Parking structure installations can be less costly than surface lot installations as power may be readily available, and equipment and wiring can be surface mounted. Parking lot installations often require trenching through concrete or asphalt surface. Large parking areas provide greater flexibility in charger siting than smaller lots.

The location and capacity of facility electric panels also impact charger installation costs. A Level 2 charger generally requires a dedicated 208-240V, 40 Amp circuit. The electric panel nearest the planned installation may not have available capacity and may need to be upgraded to serve new EV charging loads. Alternatively, chargers could be powered from a more distant panel. The distance from the panel to the location of charging stations ties directly to costs, as conduits, cables, and potential trenching costs all increase on a per-foot basis. The more charging stations planned, the more likely it is that additional electrical capacity will be needed.

Other factors to consider when planning for EV charging at a facility include who the intended users are, how long they park vehicles at the site, and whether they will need to pay for the electricity they use.



The graphic below displays the results of the EV charging assessment conducted as part of this audit. The position of each slider indicates the impact each factor has on the feasibility of installing EV charging at the site.

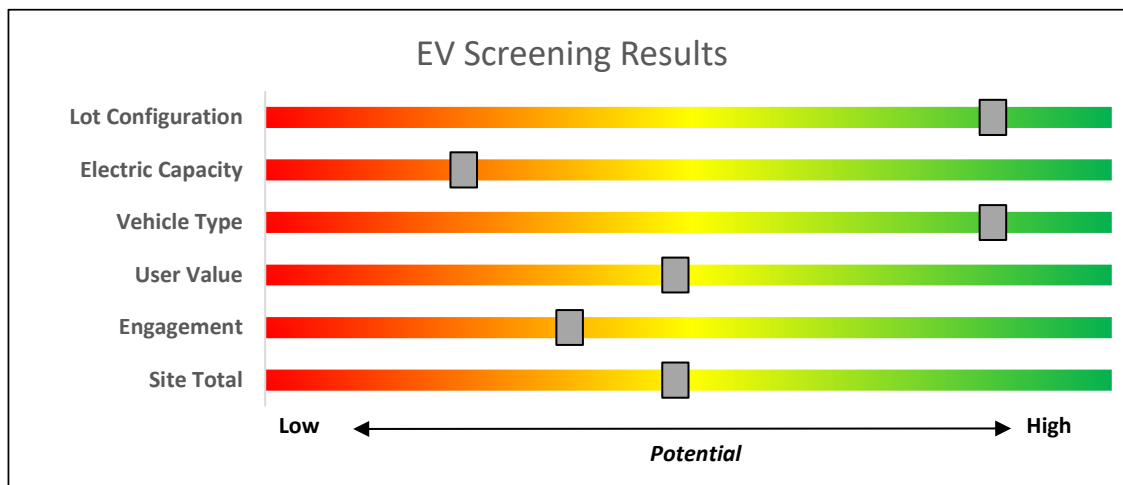


Figure 10 – EV Charger Screening

Electric Vehicle Programs Available

New Jersey is leading the way on electric vehicle (EV) adoption on the East Coast. There are several programs designed to encourage EV adoption in New Jersey, which is crucial to reaching a 100% clean energy future.

NJCEP offers a variety of EV programs for vehicles, charging stations, and fleets. Certain EV charging stations that receive electric utility service from Atlantic City Electric Company (ACE) or Public Service Electric & Gas Company (PSE&G), may be eligible for additional electric vehicle charging incentives directly from the utility. Projects may be eligible for both the incentives offered by this BPU program and incentives offered by ACE or PSE&G, up to 90% of the combined charger purchase and installation costs. Please check ACE or PSE&G program eligibility requirements before purchasing EV charging equipment, as additional conditions on types of eligible chargers may apply for utility incentives.

Both Jersey Central Power & Light (JCP&L) and Rockland Electric (RECO) have filed proposals for EV charging programs. BPU staff is currently reviewing those proposals.

For more information and to keep up to date on all EV programs please visit <https://www.njcleanenergy.com/commercial-industrial/programs/electric-vehicle-programs>

8 PROJECT FUNDING AND INCENTIVES

Ready to improve your building's performance? New Jersey's Clean Energy Programs and Utility Energy Efficiency Programs can help. Pick the program that works best for you. This section provides an overview of currently available incentive programs in.



Program areas to be served by the Utilities:

- Existing Buildings (residential, commercial, industrial, government)
- Efficient Products
 - HVAC
 - Appliance Rebates
 - Appliance Recycling

Proposed New Programs & Features:

- Dedicated multi-family program
- More financing options
- Quick home energy check-ups



Program areas staying with NJCEP:

- New Construction (residential, commercial, industrial, government)
- Large Energy Users
- Combined Heat & Power & Fuel Cells
- State Facilities
- Local Government Energy Audits
- Energy Savings Improvement Program
- Solar & Community Solar

8.1 Utility Energy Efficiency Programs

The Clean Energy Act, signed into law by Governor Murphy in 2018, requires New Jersey's investor-owned gas and electric utilities to reduce their customers' use by set percentages over time. To help reach these targets the New Jersey Board of Public Utilities approved a comprehensive suite of energy efficiency programs to be run by the utility companies.

Prescriptive and Custom

The Prescriptive and Custom rebate program through your utility provider offers incentives for installing prescriptive and custom energy efficiency measures at your facility. This program provides an effective mechanism for securing incentives for energy efficiency measures installed individually or as part of a package of energy upgrades. This program serves most common equipment types and sizes.

Equipment Examples

Lighting

Lighting Controls

HVAC Equipment

Refrigeration

Gas Heating

Gas Cooling

Commercial Kitchen Equipment

Food Service Equipment

Variable Frequency Drives

Electronically Commutate Motors

Variable Frequency Drives

Plug Loads Controls

Washers and Dryers

Agricultural

Water Heating

The Prescriptive program provides fixed incentives for specific energy efficiency measures. Prescriptive incentives vary by equipment type. The Custom program provides incentives for more unique or specialized technologies or systems that are not addressed through prescriptive incentives.

Direct Install

Direct Install is a turnkey program available to existing small to medium-sized facilities with an average peak electric demand that does not exceed 200 kW or less over the recent 12-month period. You work directly with a pre-approved contractor who will perform a free energy assessment at your facility, identify specific eligible measures, and provide a clear scope of work for installation of selected measures. Energy efficiency measures may include lighting and lighting controls, refrigeration, HVAC, motors, variable speed drives, and controls

Incentives

The program pays up to 70% of the total installed cost of eligible measures.

How to Participate

To participate in Direct Install, you will work with a participating contractor. The contractor will be paid the measure incentives directly by the program, which will pass on to you in the form of reduced material and implementation costs. This means up to 70% of eligible costs are covered by the Direct Install program, subject to program rules and eligibility, while the remaining percent of the cost is paid to the contractor by the customer.

Engineered Solutions

The Engineered Solutions Program provides tailored energy-efficiency assistance and services to municipalities, universities, schools, hospitals and healthcare facilities (MUSH), non-profit entities, and multifamily buildings. Customers receive expert guided services, including investment-grade energy auditing, engineering design, installation assistance, construction administration, commissioning, and measurement and verification (M&V) services to support the implementation of cost-effective and comprehensive efficiency projects. Engineered Solutions is generally a good option for medium to large sized facilities with a peak demand over 200 kW looking to implement as many measures as possible under a single project to achieve deep energy savings. Engineered Solutions has an added benefit of addressing measures that may not qualify for other programs. Many facilities pursuing an Energy Savings Improvement Program loan also use this program. Incentives for this program are based on project scope and energy savings achieved.

For more information on any of these programs, contact your local utility provider or visit <https://www.njcleanenergy.com/transition>.

8.2 New Jersey's Clean Energy Programs

Save money while saving the planet! New Jersey's Clean Energy Program is a statewide program that offers incentives, programs, and services that benefit New Jersey residents, businesses, educational, non-profit, and government entities to help them save energy, money, and the environment.

Large Energy Users

The Large Energy Users Program (LEUP) is designed to foster self-directed investment in energy projects. This program is offered to New Jersey's largest energy customers that annually contribute at least \$200,000 to the NJCEP aggregate of all buildings/sites. This equates to roughly \$5 million in energy costs in the prior fiscal year.

Incentives

Incentives are based on the specifications below. The maximum incentive per entity is the lesser of:

- \$4 million
- 75% of the total project(s) cost
- 90% of total NJCEP fund contribution in previous year
- \$0.33 per projected kWh saved; \$3.75 per projected Therm saved annually

How to Participate

To participate in LEUP, you will first need submit an enrollment application. This program requires all qualified and approved applicants to submit an energy plan that outlines the proposed energy efficiency work for review and approval. Applicants may submit a Draft Energy Efficiency Plan (DEEP), or a Final Energy Efficiency Plan (FEEP). Once the FEEP is approved, the proposed work can begin.

Detailed program descriptions, instructions for applying, and applications can be found at www.njcleanenergy.com/LEUP.

Combined Heat and Power

The Combined Heat & Power (CHP) program provides incentives for eligible CHP or waste heat to power (WHP) projects. Eligible CHP or WHP projects must achieve an annual system efficiency of at least 65% (lower heating value, or LHV), based on total energy input and total utilized energy output. Mechanical energy may be included in the efficiency evaluation.

Incentives

Eligible Technologies	Size (Installed Rated Capacity) ¹	Incentive (\$/kW)	% of Total Cost Cap per Project ³	\$ Cap per Project ³		
Powered by non-renewable or renewable fuel source ⁴	≤500 kW	\$2,000	30-40% ²	\$2 million		
Gas Internal Combustion Engine	>500 kW - 1 MW	\$1,000				
Gas Combustion Turbine	> 1 MW - 3 MW	\$550	30%	\$3 million		
Microturbine	>3 MW	\$350				
Fuel Cells with Heat Recovery						
Waste Heat to Power*	<1 MW	\$1,000	30%	\$2 million		
	> 1MW	\$500		\$3 million		

*Waste Heat to Power: Powered by non-renewable fuel source, heat recovery or other mechanical recovery from existing equipment utilizing new electric generation equipment (e.g. steam turbine).

Check the NJCEP website for details on program availability, current incentive levels, and requirements.

How to Participate

You will work with a qualified developer or consulting firm to complete the CHP application. Once the application is approved the project can be installed. Information about the CHP program can be found at www.njcleanenergy.com/CHP.

Successor Solar Incentive Program (SuSI)

The SuSI program replaces the SREC Registration Program (SRP) and the Transition Incentive (TI) program. The program is used to register and certify solar projects in New Jersey. Rebates are not available for solar projects, but owners of solar projects *must* register their projects prior to the start of construction to establish the project's eligibility to earn SREC-IIs (Solar Renewable Energy Certificates-II). SuSI consists of two sub-programs. The Administratively Determined Incentive (ADI) Program and the Competitive Solar Incentive (CSI) Program.

Administratively Determined Incentive (ADI) Program

The ADI Program provides administratively set incentives for net metered residential projects, net metered non-residential projects 5 MW or less, and all community solar projects.

After the registration is accepted, construction is complete, and a complete final as-built packet has been submitted, the project is issued a New Jersey certification number, which enables it to generate New Jersey SREC- IIs.

Market Segments	Size MW dc	Incentive Value (\$/SREC II)	Public Entities Incentive Value - \$20 Adder (\$/SRECII)
Net Metered Residential	All types and sizes	\$90	N/A
Small Net Metered Non-Residential located on Rooftop, Carport, Canopy and Floating Solar	Projects smaller than 1 MW	\$100	\$120
Large Net Metered Non-Residential located on Rooftop, Carport, Canopy and Floating Solar	Projects 1 MW to 5 MW	\$90	\$110
Small Net Metered Non-Residential Ground Mount	Projects smaller than 1 MW	\$85	\$105
Large Net Metered Non-Residential Ground Mount	Projects 1 MW to 5 MW	\$80	\$100
LMI Community Solar	Up to 5 MW	\$90	N/A
Non-LMI Community Solar	Up to 5 MW	\$70	N/A
Interim Subsection (t)	All types and sizes	\$100	N/A

Eligible projects may generate SREC-IIs for 15 years following the commencement of commercial operations which is defined as permission to operate (PTO) from the Electric Distribution Company. After 15 years, projects may be eligible for a NJ Class I REC.

SREC-IIs will be purchased monthly by the SREC-II Program Administrator who will allocate the SREC-IIs to the Load Serving Entities (BGS Providers and Third-Party Suppliers) annually based on their market share of retail electricity sold during the relevant Energy Year.

The ADI Program online portal is now open to new registrations.

Competitive Solar Incentive Program

The Competitive Solar Incentive (CSI) Program will provide competitively set incentives for grid supply projects and net metered non-residential projects greater than 5MW (dc). The program is currently under development. For updates, please continue to check the [Solar Proceedings](#) page on the New Jersey's Clean Energy Program website.

Solar projects help the State of New Jersey reach renewable energy goals outlined in the state's Energy Master Plan.

If you are considering installing solar photovoltaics on your building, visit the following link for more information: <https://njcleanenergy.com/renewable-energy/programs/susi-program>.

Energy Savings Improvement Program

The Energy Savings Improvement Program (ESIP) serves New Jersey's government agencies by financing energy projects. An ESIP is a type of performance contract, whereby school districts, counties, municipalities, housing authorities, and other public and state entities enter into contracts to help finance building energy upgrades. Annual payments are lower than the savings projected from the energy conservation measures (ECMs), ensuring that ESIP projects are cash flow positive for the life of the contract.

ESIP provides government agencies in New Jersey with a flexible tool to improve and reduce energy usage with minimal expenditure of new financial resources. NJCEP incentive programs described above can also be used to help further reduce the total project cost of eligible measures.

How to Participate

This LGEA report is the first step to participating in ESIP. Next, you will need to select an approach for implementing the desired ECMs:

- (1) Use an energy services company or "ESCO."
- (2) Use independent engineers and other specialists, or your own qualified staff, to provide and manage the requirements of the program through bonds or lease obligations.
- (3) Use a hybrid approach of the two options described above where the ESCO is used for some services and independent engineers, or other specialists or qualified staff, are used to deliver other requirements of the program.

After adopting a resolution with a chosen implementation approach, the development of the energy savings plan can begin. The ESP demonstrates that the total project costs of the ECMs are offset by the energy savings over the financing term, not to exceed 15 years. The verified savings will then be used to pay for the financing.

The ESIP approach may not be appropriate for all energy conservation and energy efficiency improvements. Carefully consider all alternatives to develop an approach that best meets your needs. A detailed program descriptions and application can be found at www.njcleanenergy.com/ESIP.

ESIP is a program delivered directly by the NJBPU and is not an NJCEP incentive program. As mentioned above, you can use NJCEP incentive programs to help further reduce costs when developing the energy savings plan. Refer to the ESIP guidelines at the link above for further information and guidance on next steps.

9 PROJECT DEVELOPMENT

Energy conservation measures (ECMs) have been identified for your site, and their energy and economic analyses are provided within this LGEA report. Note that some of the identified projects may be mutually exclusive, such as replacing equipment versus upgrading motors or controls. The next steps with project development are to set goals and create a comprehensive project plan. The graphic below provides an overview of the process flow for a typical energy efficiency or renewable energy project. We recommend implementing as many ECMs as possible prior to undertaking a feasibility study for a renewable project. The cyclical nature of this process flow demonstrates the ongoing work required to continually improve building energy efficiency over time. If your building(s) scope of work is relatively simple to implement or small in scope, the measurement and verification (M&V) step may not be required. It should be noted through a typical project cycle, there will be changes in costs based on specific scopes of work, contractor selections, design considerations, construction, etc. The estimated costs provided throughout this LGEA report demonstrate the unburdened turn-key material and labor cost only. There will be contingencies and additional costs at the time of implementation. We recommend comprehensive project planning that includes the review of multiple bids for project work, incorporates potential operations and maintenance (O&M) cost savings, and maximizes your incentive potential.

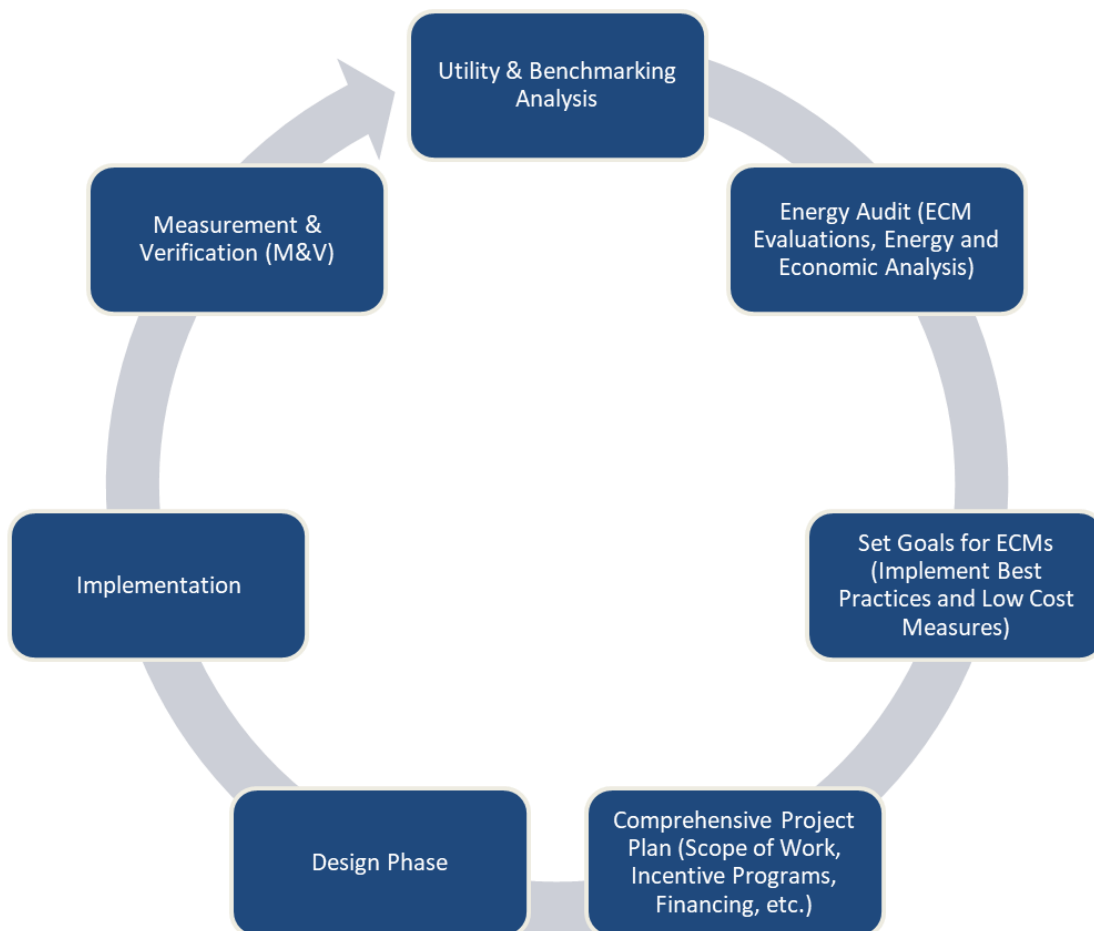


Figure 11 – Project Development Cycle

10 ENERGY PURCHASING AND PROCUREMENT STRATEGIES

10.1 Retail Electric Supply Options

Energy deregulation in New Jersey has increased energy buyers' options by separating the function of electricity distribution from that of electricity supply. Though you may choose a different company from which to buy your electric power, responsibility for your facility's interconnection to the grid and repair to local power distribution will still reside with the traditional utility company serving your region.

If your facility is not purchasing electricity from a third-party supplier, consider shopping for a reduced rate from third-party electric suppliers. If your facility already buys electricity from a third-party supplier, review and compare prices at the end of each contract year.

A list of licensed third-party electric suppliers is available at the NJBPU website⁷.

⁷ www.state.nj.us/bpu/commercial/shopping.html.



APPENDIX A: EQUIPMENT INVENTORY & RECOMMENDATIONS

Lighting Inventory & Recommendations

	Existing Conditions						Proposed Conditions								Energy Impact & Financial Analysis						
Location	Fixture Quantity	Fixture Description	Control System	Light Level	Watts per Fixture	Annual Operating Hours	ECM #	Fixture Recommendation	Add Controls?	Fixture Quantity	Fixture Description	Control System	Watts per Fixture	Annual Operating Hours	Total Peak kW Savings	Total Annual kWh Savings	Total Annual MMBtu Savings	Total Annual Energy Cost Savings	Estimated M&L Cost (\$)	Total Incentives	Simple Payback w/ Incentives in Years
Classroom 1	1	Exit Signs: LED - 2 W Lamp	None		6	8,760		None	No	1	Exit Signs: LED - 2 W Lamp	None	6	8,760	0.0	0	0	\$0	\$0	\$0	0.0
Classroom 1	12	Linear Fluorescent - T8: 4' T8 (32W) - 4L	Wall Switch	S	114	2,200	3, 4	Relamp	Yes	12	LED - Linear Tubes: (4) 4' Lamps	Occupancy Sensor	58	1,518	0.6	2,148	-1	\$244	\$1,146	\$275	3.6
Classroom 10	4	Linear Fluorescent - EST12: 4' T12 (34W) - 1L	Wall Switch	S	43	2,200	2, 4	Relamp & Reballast	Yes	4	LED - Linear Tubes: (1) 4' Lamp	Occupancy Sensor	15	1,518	0.1	319	0	\$36	\$472	\$55	11.5
Classroom 10	9	Linear Fluorescent - T5: 4' T5 (28W) - 2L	Wall Switch	S	60	2,200	3, 4	Relamp	Yes	9	LED - Linear Tubes: (2) 4' T5 (14.5W) Lamps	Occupancy Sensor	30	1,518	0.3	856	0	\$97	\$784	\$125	6.8
Classroom 11	4	Linear Fluorescent - EST12: 4' T12 (34W) - 1L	Wall Switch	S	43	2,200	2, 4	Relamp & Reballast	Yes	4	LED - Linear Tubes: (1) 4' Lamp	Occupancy Sensor	15	1,518	0.1	319	0	\$36	\$472	\$55	11.5
Classroom 11	9	Linear Fluorescent - T5: 4' T5 (28W) - 2L	Wall Switch	S	60	2,200	3, 4	Relamp	Yes	9	LED - Linear Tubes: (2) 4' T5 (14.5W) Lamps	Occupancy Sensor	30	1,518	0.3	856	0	\$97	\$784	\$125	6.8
Classroom 12	4	Linear Fluorescent - EST12: 4' T12 (34W) - 1L	Wall Switch	S	43	2,200	2, 4	Relamp & Reballast	Yes	4	LED - Linear Tubes: (1) 4' Lamp	Occupancy Sensor	15	1,518	0.1	319	0	\$36	\$472	\$55	11.5
Classroom 12	9	Linear Fluorescent - T5: 4' T5 (28W) - 2L	Wall Switch	S	60	2,200	3, 4	Relamp	Yes	9	LED - Linear Tubes: (2) 4' T5 (14.5W) Lamps	Occupancy Sensor	30	1,518	0.3	856	0	\$97	\$784	\$125	6.8
Classroom 13	4	Linear Fluorescent - EST12: 4' T12 (34W) - 1L	Wall Switch	S	43	2,200	2, 4	Relamp & Reballast	Yes	4	LED - Linear Tubes: (1) 4' Lamp	Occupancy Sensor	15	1,518	0.1	319	0	\$36	\$472	\$55	11.5
Classroom 13	9	Linear Fluorescent - T5: 4' T5 (28W) - 2L	Wall Switch	S	60	2,200	3, 4	Relamp	Yes	9	LED - Linear Tubes: (2) 4' T5 (14.5W) Lamps	Occupancy Sensor	30	1,518	0.3	856	0	\$97	\$784	\$125	6.8
Classroom 14	4	Linear Fluorescent - EST12: 4' T12 (34W) - 1L	Wall Switch	S	43	2,200	2, 4	Relamp & Reballast	Yes	4	LED - Linear Tubes: (1) 4' Lamp	Occupancy Sensor	15	1,518	0.1	319	0	\$36	\$472	\$55	11.5
Classroom 14	9	Linear Fluorescent - T5: 4' T5 (28W) - 2L	Wall Switch	S	60	2,200	3, 4	Relamp	Yes	9	LED - Linear Tubes: (2) 4' T5 (14.5W) Lamps	Occupancy Sensor	30	1,518	0.3	856	0	\$97	\$784	\$125	6.8
Classroom 15	4	Linear Fluorescent - EST12: 4' T12 (34W) - 1L	Wall Switch	S	43	2,200	2, 4	Relamp & Reballast	Yes	4	LED - Linear Tubes: (1) 4' Lamp	Occupancy Sensor	15	1,518	0.1	319	0	\$36	\$472	\$55	11.5
Classroom 15	9	Linear Fluorescent - T5: 4' T5 (28W) - 2L	Wall Switch	S	60	2,200	3, 4	Relamp	Yes	9	LED - Linear Tubes: (2) 4' T5 (14.5W) Lamps	Occupancy Sensor	30	1,518	0.3	856	0	\$97	\$784	\$125	6.8
Classroom 16	4	Linear Fluorescent - EST12: 4' T12 (34W) - 1L	Wall Switch	S	43	2,200	2, 4	Relamp & Reballast	Yes	4	LED - Linear Tubes: (1) 4' Lamp	Occupancy Sensor	15	1,518	0.1	319	0	\$36	\$472	\$55	11.5
Classroom 16	9	Linear Fluorescent - T5: 4' T5 (28W) - 2L	Wall Switch	S	60	2,200	3, 4	Relamp	Yes	9	LED - Linear Tubes: (2) 4' T5 (14.5W) Lamps	Occupancy Sensor	30	1,518	0.3	856	0	\$97	\$784	\$125	6.8
Classroom 17	4	Linear Fluorescent - EST12: 4' T12 (34W) - 1L	Wall Switch	S	43	2,200	2, 4	Relamp & Reballast	Yes	4	LED - Linear Tubes: (1) 4' Lamp	Occupancy Sensor	15	1,518	0.1	319	0	\$36	\$472	\$55	11.5
Classroom 17	9	Linear Fluorescent - T5: 4' T5 (28W) - 2L	Wall Switch	S	60	2,200	3, 4	Relamp	Yes	9	LED - Linear Tubes: (2) 4' T5 (14.5W) Lamps	Occupancy Sensor	30	1,518	0.3	856	0	\$97	\$784	\$125	6.8
Classroom 22	4	Linear Fluorescent - EST12: 4' T12 (34W) - 1L	Wall Switch	S	43	2,200	2, 4	Relamp & Reballast	Yes	4	LED - Linear Tubes: (1) 4' Lamp	Occupancy Sensor	15	1,518	0.1	319	0	\$36	\$472	\$55	11.5
Classroom 22	9	Linear Fluorescent - T5: 4' T5 (28W) - 2L	Wall Switch	S	60	2,200	3, 4	Relamp	Yes	9	LED - Linear Tubes: (2) 4' T5 (14.5W) Lamps	Occupancy Sensor	30	1,518	0.3	856	0	\$97	\$784	\$125	6.8
Classroom 23	4	Linear Fluorescent - EST12: 4' T12 (34W) - 1L	Wall Switch	S	43	2,200	2, 4	Relamp & Reballast	Yes	4	LED - Linear Tubes: (1) 4' Lamp	Occupancy Sensor	15	1,518	0.1	319	0	\$36	\$472	\$55	11.5
Classroom 23	9	Linear Fluorescent - T5: 4' T5 (28W) - 2L	Wall Switch	S	60	2,200	3, 4	Relamp	Yes	9	LED - Linear Tubes: (2) 4' T5 (14.5W) Lamps	Occupancy Sensor	30	1,518	0.3	856	0	\$97	\$784	\$125	6.8
Classroom 24	4	Linear Fluorescent - EST12: 4' T12 (34W) - 1L	Wall Switch	S	43	2,200	2, 4	Relamp & Reballast	Yes	4	LED - Linear Tubes: (1) 4' Lamp	Occupancy Sensor	15	1,518	0.1	319	0	\$36	\$472	\$55	11.5
Classroom 24	9	Linear Fluorescent - T5: 4' T5 (28W) - 2L	Wall Switch	S	60	2,200	3, 4	Relamp	Yes	9	LED - Linear Tubes: (2) 4' T5 (14.5W) Lamps	Occupancy Sensor	30	1,518	0.3	856	0	\$97	\$784	\$125	6.8
Classroom 25	4	Linear Fluorescent - EST12: 4' T12 (34W) - 1L	Wall Switch	S	43	2,200	2, 4	Relamp & Reballast	Yes	4	LED - Linear Tubes: (1) 4' Lamp	Occupancy Sensor	15	1,518	0.1	319	0	\$36	\$472	\$55	11.5

Existing Conditions							Proposed Conditions							Energy Impact & Financial Analysis							
Location	Fixture Quantity	Fixture Description	Control System	Light Level	Watts per Fixture	Annual Operating Hours	ECM #	Fixture Recommendation	Add Controls?	Fixture Quantity	Fixture Description	Control System	Watts per Fixture	Annual Operating Hours	Total Peak kW Savings	Total Annual kWh Savings	Total Annual MMBtu Savings	Total Annual Energy Cost Savings	Estimated M&L Cost (\$)	Total Incentives	Simple Payback w/ Incentives in Years
Classroom 25	9	Linear Fluorescent - T5: 4' T5 (28W) - 2L	Wall Switch	S	60	2,200	3, 4	Relamp	Yes	9	LED - Linear Tubes: (2) 4' T5 (14.5W) Lamps	Occupancy Sensor	30	1,518	0.3	856	0	\$97	\$784	\$125	6.8
Classroom 30	6	Linear Fluorescent - T5: 4' T5 (28W) - 2L	Wall Switch	S	60	2,200	3, 4	Relamp	Yes	6	LED - Linear Tubes: (2) 4' T5 (14.5W) Lamps	Occupancy Sensor	30	1,518	0.2	571	0	\$65	\$612	\$95	8.0
Classroom 31	4	Linear Fluorescent - EST12: 4' T12 (34W) - 1L	Wall Switch	S	43	2,200	2, 4	Relamp & Reballast	Yes	4	LED - Linear Tubes: (1) 4' Lamp	Occupancy Sensor	15	1,518	0.1	319	0	\$36	\$472	\$55	11.5
Classroom 31	8	Linear Fluorescent - T5: 4' T5 (28W) - 2L	Wall Switch	S	60	2,200	3, 4	Relamp	Yes	8	LED - Linear Tubes: (2) 4' T5 (14.5W) Lamps	Occupancy Sensor	30	1,518	0.2	761	0	\$86	\$727	\$115	7.1
Classroom 32	4	Linear Fluorescent - EST12: 4' T12 (34W) - 1L	Wall Switch	S	43	2,200	2, 4	Relamp & Reballast	Yes	4	LED - Linear Tubes: (1) 4' Lamp	Occupancy Sensor	15	1,518	0.1	319	0	\$36	\$472	\$55	11.5
Classroom 32	9	Linear Fluorescent - T5: 4' T5 (28W) - 2L	Wall Switch	S	60	2,200	3, 4	Relamp	Yes	9	LED - Linear Tubes: (2) 4' T5 (14.5W) Lamps	Occupancy Sensor	30	1,518	0.3	856	0	\$97	\$784	\$125	6.8
Classroom 33	4	Linear Fluorescent - EST12: 4' T12 (34W) - 1L	Wall Switch	S	43	2,200	2, 4	Relamp & Reballast	Yes	4	LED - Linear Tubes: (1) 4' Lamp	Occupancy Sensor	15	1,518	0.1	319	0	\$36	\$472	\$55	11.5
Classroom 33	9	Linear Fluorescent - T5: 4' T5 (28W) - 2L	Wall Switch	S	60	2,200	3, 4	Relamp	Yes	9	LED - Linear Tubes: (2) 4' T5 (14.5W) Lamps	Occupancy Sensor	30	1,518	0.3	856	0	\$97	\$784	\$125	6.8
Classroom 34	4	Linear Fluorescent - EST12: 4' T12 (34W) - 1L	Wall Switch	S	43	2,200	2, 4	Relamp & Reballast	Yes	4	LED - Linear Tubes: (1) 4' Lamp	Occupancy Sensor	15	1,518	0.1	319	0	\$36	\$472	\$55	11.5
Classroom 34	9	Linear Fluorescent - T5: 4' T5 (28W) - 2L	Wall Switch	S	60	2,200	3, 4	Relamp	Yes	9	LED - Linear Tubes: (2) 4' T5 (14.5W) Lamps	Occupancy Sensor	30	1,518	0.3	856	0	\$97	\$784	\$125	6.8
Classroom 35	4	Linear Fluorescent - EST12: 4' T12 (34W) - 1L	Wall Switch	S	43	2,200	2, 4	Relamp & Reballast	Yes	4	LED - Linear Tubes: (1) 4' Lamp	Occupancy Sensor	15	1,518	0.1	319	0	\$36	\$472	\$55	11.5
Classroom 35	9	Linear Fluorescent - T5: 4' T5 (28W) - 2L	Wall Switch	S	60	2,200	3, 4	Relamp	Yes	9	LED - Linear Tubes: (2) 4' T5 (14.5W) Lamps	Occupancy Sensor	30	1,518	0.3	856	0	\$97	\$784	\$125	6.8
Classroom 36	2	Exit Signs: LED - 2 W Lamp	None		6	8,760		None	No	2	Exit Signs: LED - 2 W Lamp	None	6	8,760	0.0	0	0	\$0	\$0	\$0	0.0
Classroom 36	4	Linear Fluorescent - T8: 4' T8 (32W) - 2L	Wall Switch	S	62	2,200	3, 4	Relamp	Yes	4	LED - Linear Tubes: (2) 4' Lamps	Occupancy Sensor	29	1,518	0.1	406	0	\$46	\$416	\$75	7.4
Classroom 36	9	Linear Fluorescent - T8: 4' T8 (32W) - 3L	Wall Switch	S	93	2,200	3, 4	Relamp	Yes	9	LED - Linear Tubes: (3) 4' Lamps	Occupancy Sensor	44	1,518	0.4	1,372	-1	\$156	\$763	\$170	3.8
Classroom 37	2	Exit Signs: LED - 2 W Lamp	None		6	8,760		None	No	2	Exit Signs: LED - 2 W Lamp	None	6	8,760	0.0	0	0	\$0	\$0	\$0	0.0
Classroom 37	4	Linear Fluorescent - T8: 4' T8 (32W) - 2L	Wall Switch	S	62	2,200	3, 4	Relamp	Yes	4	LED - Linear Tubes: (2) 4' Lamps	Occupancy Sensor	29	1,518	0.1	406	0	\$46	\$416	\$75	7.4
Classroom 37	9	Linear Fluorescent - T8: 4' T8 (32W) - 3L	Wall Switch	S	93	2,200	3, 4	Relamp	Yes	9	LED - Linear Tubes: (3) 4' Lamps	Occupancy Sensor	44	1,518	0.4	1,372	-1	\$156	\$763	\$170	3.8
Classroom 38	2	Exit Signs: LED - 2 W Lamp	None		6	8,760		None	No	2	Exit Signs: LED - 2 W Lamp	None	6	8,760	0.0	0	0	\$0	\$0	\$0	0.0
Classroom 38	4	Linear Fluorescent - T8: 4' T8 (32W) - 2L	Wall Switch	S	62	2,200	3, 4	Relamp	Yes	4	LED - Linear Tubes: (2) 4' Lamps	Occupancy Sensor	29	1,518	0.1	406	0	\$46	\$416	\$75	7.4
Classroom 38	9	Linear Fluorescent - T8: 4' T8 (32W) - 3L	Wall Switch	S	93	2,200	3, 4	Relamp	Yes	9	LED - Linear Tubes: (3) 4' Lamps	Occupancy Sensor	44	1,518	0.4	1,372	-1	\$156	\$763	\$170	3.8
Classroom 39	2	Exit Signs: LED - 2 W Lamp	None		6	8,760		None	No	2	Exit Signs: LED - 2 W Lamp	None	6	8,760	0.0	0	0	\$0	\$0	\$0	0.0
Classroom 39	4	Linear Fluorescent - T8: 4' T8 (32W) - 2L	Wall Switch	S	62	2,200	3, 4	Relamp	Yes	4	LED - Linear Tubes: (2) 4' Lamps	Occupancy Sensor	29	1,518	0.1	406	0	\$46	\$416	\$75	7.4
Classroom 39	9	Linear Fluorescent - T8: 4' T8 (32W) - 3L	Wall Switch	S	93	2,200	3, 4	Relamp	Yes	9	LED - Linear Tubes: (3) 4' Lamps	Occupancy Sensor	44	1,518	0.4	1,372	-1	\$156	\$763	\$170	3.8
Classroom 40	4	Linear Fluorescent - EST12: 4' T12 (34W) - 1L	Wall Switch	S	43	2,200	2, 4	Relamp & Reballast	Yes	4	LED - Linear Tubes: (1) 4' Lamp	Occupancy Sensor	15	1,518	0.1	319	0	\$36	\$472	\$55	11.5

	Existing Conditions						Proposed Conditions								Energy Impact & Financial Analysis							
Location	Fixture Quantity	Fixture Description	Control System	Light Level	Watts per Fixture	Annual Operating Hours	ECM #	Fixture Recommendation	Add Controls?	Fixture Quantity	Fixture Description	Control System	Watts per Fixture	Annual Operating Hours	Total Peak kW Savings	Total Annual kWh Savings	Total Annual MMBtu Savings	Total Annual Energy Cost Savings	Estimated M&L Cost (\$)	Total Incentives	Simple Payback w/ Incentives in Years	
Classroom 40	9	Linear Fluorescent - T5: 4' T5 (28W) - 2L	Wall Switch	S	60	2,200	3, 4	Relamp	Yes	9	LED - Linear Tubes: (2) 4' T5 (14.5W) Lamps	Occupancy Sensor	30	1,518	0.3	856	0	\$97	\$784	\$125	6.8	
Classroom 41	1	LED - Fixtures: Ambient 2x2 Fixture	Wall Switch	S	30	2,200		None	No	1	LED - Fixtures: Ambient 2x2 Fixture	Wall Switch	30	2,200	0.0	0	0	\$0	\$0	\$0	0.0	
Classroom 41	9	LED - Fixtures: Ambient 2x4 Fixture	Wall Switch	S	40	2,200	4	None	Yes	9	LED - Fixtures: Ambient 2x4 Fixture	Occupancy Sensor	40	1,518	0.1	270	0	\$31	\$270	\$35	7.7	
Classroom 42	4	Linear Fluorescent - EST12: 4' T12 (34W) - 1L	Wall Switch	S	43	2,200	2, 4	Relamp & Reballast	Yes	4	LED - Linear Tubes: (1) 4' Lamp	Occupancy Sensor	15	1,518	0.1	319	0	\$36	\$472	\$55	11.5	
Classroom 42	9	Linear Fluorescent - T5: 4' T5 (28W) - 2L	Wall Switch	S	60	2,200	3, 4	Relamp	Yes	9	LED - Linear Tubes: (2) 4' T5 (14.5W) Lamps	Occupancy Sensor	30	1,518	0.3	856	0	\$97	\$784	\$125	6.8	
Classroom 43	4	Linear Fluorescent - EST12: 4' T12 (34W) - 1L	Wall Switch	S	43	2,200	2, 4	Relamp & Reballast	Yes	4	LED - Linear Tubes: (1) 4' Lamp	Occupancy Sensor	15	1,518	0.1	319	0	\$36	\$472	\$55	11.5	
Classroom 43	9	Linear Fluorescent - T5: 4' T5 (28W) - 2L	Wall Switch	S	60	2,200	3, 4	Relamp	Yes	9	LED - Linear Tubes: (2) 4' T5 (14.5W) Lamps	Occupancy Sensor	30	1,518	0.3	856	0	\$97	\$784	\$125	6.8	
Classroom 44	4	Linear Fluorescent - EST12: 4' T12 (34W) - 1L	Wall Switch	S	43	2,200	2, 4	Relamp & Reballast	Yes	4	LED - Linear Tubes: (1) 4' Lamp	Occupancy Sensor	15	1,518	0.1	319	0	\$36	\$472	\$55	11.5	
Classroom 44	9	Linear Fluorescent - T5: 4' T5 (28W) - 2L	Wall Switch	S	60	2,200	3, 4	Relamp	Yes	9	LED - Linear Tubes: (2) 4' T5 (14.5W) Lamps	Occupancy Sensor	30	1,518	0.3	856	0	\$97	\$784	\$125	6.8	
Classroom 45	4	Linear Fluorescent - EST12: 4' T12 (34W) - 1L	Wall Switch	S	43	2,200	2, 4	Relamp & Reballast	Yes	4	LED - Linear Tubes: (1) 4' Lamp	Occupancy Sensor	15	1,518	0.1	319	0	\$36	\$472	\$55	11.5	
Classroom 45	9	Linear Fluorescent - T5: 4' T5 (28W) - 2L	Wall Switch	S	60	2,200	3, 4	Relamp	Yes	9	LED - Linear Tubes: (2) 4' T5 (14.5W) Lamps	Occupancy Sensor	30	1,518	0.3	856	0	\$97	\$784	\$125	6.8	
Classroom 46	4	Linear Fluorescent - EST12: 4' T12 (34W) - 1L	Wall Switch	S	43	2,200	2, 4	Relamp & Reballast	Yes	4	LED - Linear Tubes: (1) 4' Lamp	Occupancy Sensor	15	1,518	0.1	319	0	\$36	\$472	\$55	11.5	
Classroom 46	9	Linear Fluorescent - T5: 4' T5 (28W) - 2L	Wall Switch	S	60	2,200	3, 4	Relamp	Yes	9	LED - Linear Tubes: (2) 4' T5 (14.5W) Lamps	Occupancy Sensor	30	1,518	0.3	856	0	\$97	\$784	\$125	6.8	
Classroom 47	4	Linear Fluorescent - EST12: 4' T12 (34W) - 1L	Wall Switch	S	43	2,200	2, 4	Relamp & Reballast	Yes	4	LED - Linear Tubes: (1) 4' Lamp	Occupancy Sensor	15	1,518	0.1	319	0	\$36	\$472	\$55	11.5	
Classroom 47	9	Linear Fluorescent - T5: 4' T5 (28W) - 2L	Wall Switch	S	60	2,200	3, 4	Relamp	Yes	9	LED - Linear Tubes: (2) 4' T5 (14.5W) Lamps	Occupancy Sensor	30	1,518	0.3	856	0	\$97	\$784	\$125	6.8	
Classroom 50	9	Linear Fluorescent - T5: 4' T5 (28W) - 2L	Wall Switch	S	60	2,200	3, 4	Relamp	Yes	9	LED - Linear Tubes: (2) 4' T5 (14.5W) Lamps	Occupancy Sensor	30	1,518	0.3	856	0	\$97	\$784	\$125	6.8	
Classroom 51	3	Exit Signs: LED - 2 W Lamp	None		6	8,760		None	No	3	Exit Signs: LED - 2 W Lamp	None	6	8,760	0.0	0	0	\$0	\$0	\$0	0.0	
Classroom 51	3	Linear Fluorescent - T5: 4' T5 (28W) - 2L	Wall Switch	S	60	2,200	3, 4	Relamp	Yes	3	LED - Linear Tubes: (2) 4' T5 (14.5W) Lamps	Occupancy Sensor	30	1,518	0.1	285	0	\$32	\$441	\$65	11.6	
Classroom 52	9	Linear Fluorescent - T5: 4' T5 (28W) - 2L	Wall Switch	S	60	2,200	3, 4	Relamp	Yes	9	LED - Linear Tubes: (2) 4' T5 (14.5W) Lamps	Occupancy Sensor	30	1,518	0.3	856	0	\$97	\$784	\$125	6.8	
Classroom 53	9	Linear Fluorescent - T5: 4' T5 (28W) - 2L	Wall Switch	S	60	2,200	3, 4	Relamp	Yes	9	LED - Linear Tubes: (2) 4' T5 (14.5W) Lamps	Occupancy Sensor	30	1,518	0.3	856	0	\$97	\$784	\$125	6.8	
Classroom 54	9	Linear Fluorescent - T5: 4' T5 (28W) - 2L	Wall Switch	S	60	2,200	3, 4	Relamp	Yes	9	LED - Linear Tubes: (2) 4' T5 (14.5W) Lamps	Occupancy Sensor	30	1,518	0.3	856	0	\$97	\$784	\$125	6.8	
Classroom 55	9	Linear Fluorescent - T5: 4' T5 (28W) - 2L	Wall Switch	S	60	2,200	3, 4	Relamp	Yes	9	LED - Linear Tubes: (2) 4' T5 (14.5W) Lamps	Occupancy Sensor	30	1,518	0.3	856	0	\$97	\$784	\$125	6.8	
Classroom 56	9	Linear Fluorescent - T5: 4' T5 (28W) - 2L	Wall Switch	S	60	2,200	3, 4	Relamp	Yes	9	LED - Linear Tubes: (2) 4' T5 (14.5W) Lamps	Occupancy Sensor	30	1,518	0.3	856	0	\$97	\$784	\$125	6.8	
Classroom 6	1	Exit Signs: LED - 2 W Lamp	None		6	8,760		None	No	1	Exit Signs: LED - 2 W Lamp	None	6	8,760	0.0	0	0	\$0	\$0	\$0	0.0	
Classroom 6	12	Linear Fluorescent - T8: 4' T8 (32W) - 4L	Wall Switch	S	114	2,200	3, 4	Relamp	Yes	12	LED - Linear Tubes: (4) 4' Lamps	Occupancy Sensor	58	1,518	0.6	2,148	-1	\$244	\$1,146	\$275	3.6	

Existing Conditions							Proposed Conditions							Energy Impact & Financial Analysis							
Location	Fixture Quantity	Fixture Description	Control System	Light Level	Watts per Fixture	Annual Operating Hours	ECM #	Fixture Recommendation	Add Controls?	Fixture Quantity	Fixture Description	Control System	Watts per Fixture	Annual Operating Hours	Total Peak kW Savings	Total Annual kWh Savings	Total Annual MMBtu Savings	Total Annual Energy Cost Savings	Estimated M&L Cost (\$)	Total Incentives	Simple Payback w/ Incentives in Years
Classroom 60	9	Linear Fluorescent - T5: 4' T5 (28W) - 2L	Wall Switch	S	60	2,200	3, 4	Relamp	Yes	9	LED - Linear Tubes: (2) 4' T5 (14.5W) Lamps	Occupancy Sensor	30	1,518	0.3	856	0	\$97	\$784	\$125	6.8
Classroom 61	9	Linear Fluorescent - T5: 4' T5 (28W) - 2L	Wall Switch	S	60	2,200	3, 4	Relamp	Yes	9	LED - Linear Tubes: (2) 4' T5 (14.5W) Lamps	Occupancy Sensor	30	1,518	0.3	856	0	\$97	\$784	\$125	6.8
Classroom 62	9	Linear Fluorescent - T5: 4' T5 (28W) - 2L	Wall Switch	S	60	2,200	3, 4	Relamp	Yes	9	LED - Linear Tubes: (2) 4' T5 (14.5W) Lamps	Occupancy Sensor	30	1,518	0.3	856	0	\$97	\$784	\$125	6.8
Classroom 63	9	Linear Fluorescent - T5: 4' T5 (28W) - 2L	Wall Switch	S	60	2,200	3, 4	Relamp	Yes	9	LED - Linear Tubes: (2) 4' T5 (14.5W) Lamps	Occupancy Sensor	30	1,518	0.3	856	0	\$97	\$784	\$125	6.8
Classroom 64	9	Linear Fluorescent - T5: 4' T5 (28W) - 2L	Wall Switch	S	60	2,200	3, 4	Relamp	Yes	9	LED - Linear Tubes: (2) 4' T5 (14.5W) Lamps	Occupancy Sensor	30	1,518	0.3	856	0	\$97	\$784	\$125	6.8
Classroom 65	9	Linear Fluorescent - T5: 4' T5 (28W) - 2L	Wall Switch	S	60	2,200	3, 4	Relamp	Yes	9	LED - Linear Tubes: (2) 4' T5 (14.5W) Lamps	Occupancy Sensor	30	1,518	0.3	856	0	\$97	\$784	\$125	6.8
Classroom 66	9	Linear Fluorescent - T5: 4' T5 (28W) - 2L	Wall Switch	S	60	2,200	3, 4	Relamp	Yes	9	LED - Linear Tubes: (2) 4' T5 (14.5W) Lamps	Occupancy Sensor	30	1,518	0.3	856	0	\$97	\$784	\$125	6.8
Classroom 7	1	Exit Signs: LED - 2 W Lamp	None		6	8,760		None	No	1	Exit Signs: LED - 2 W Lamp	None	6	8,760	0.0	0	0	\$0	\$0	\$0	0.0
Classroom 7	12	Linear Fluorescent - T8: 4' T8 (32W) - 4L	Wall Switch	S	114	2,200	3, 4	Relamp	Yes	12	LED - Linear Tubes: (4) 4' Lamps	Occupancy Sensor	58	1,518	0.6	2,148	-1	\$244	\$1,146	\$275	3.6
Classroom 72 Art Room	18	LED - Fixtures: Ambient 2x4 Fixture	Wall Switch	S	40	2,200	4	None	Yes	18	LED - Fixtures: Ambient 2x4 Fixture	Occupancy Sensor	40	1,518	0.2	540	0	\$61	\$540	\$70	7.7
Classroom ESL	6	LED - Fixtures: Ambient 2x4 Fixture	Wall Switch	S	40	2,200	4	None	Yes	6	LED - Fixtures: Ambient 2x4 Fixture	Occupancy Sensor	40	1,518	0.1	180	0	\$20	\$270	\$35	11.5
Classroom Music	1	LED - Fixtures: Ambient 2x2 Fixture	Wall Switch	S	30	2,200		None	No	1	LED - Fixtures: Ambient 2x2 Fixture	Wall Switch	30	2,200	0.0	0	0	\$0	\$0	\$0	0.0
Classroom Music	16	LED - Fixtures: Ambient 2x4 Fixture	Wall Switch	S	40	2,200	4	None	Yes	16	LED - Fixtures: Ambient 2x4 Fixture	Occupancy Sensor	40	1,518	0.1	480	0	\$54	\$540	\$70	8.6
Classroom Resource Rm 4	6	Linear Fluorescent - T8: 4' T8 (32W) - 4L	Wall Switch	S	114	2,200	3, 4	Relamp	Yes	6	LED - Linear Tubes: (4) 4' Lamps	Occupancy Sensor	58	1,518	0.3	1,074	0	\$122	\$708	\$155	4.5
Classroom Resource Rm 5	6	Linear Fluorescent - T8: 4' T8 (32W) - 4L	Wall Switch	S	114	2,200	3, 4	Relamp	Yes	6	LED - Linear Tubes: (4) 4' Lamps	Occupancy Sensor	58	1,518	0.3	1,074	0	\$122	\$708	\$155	4.5
Classroom Science 76	2	Exit Signs: LED - 2 W Lamp	None		6	8,760		None	No	2	Exit Signs: LED - 2 W Lamp	None	6	8,760	0.0	0	0	\$0	\$0	\$0	0.0
Classroom Science 76	1	Linear Fluorescent - T8: 4' T8 (32W) - 4L	Wall Switch	S	114	2,200	3	Relamp	No	1	LED - Linear Tubes: (4) 4' Lamps	Wall Switch	58	2,200	0.0	136	0	\$15	\$73	\$20	3.5
Classroom Science 76	2	Linear Fluorescent - T8: 4' T8 (32W) - 4L	Wall Switch	S	114	2,200	3, 4	Relamp	Yes	2	LED - Linear Tubes: (4) 4' Lamps	Occupancy Sensor	58	1,518	0.1	358	0	\$41	\$262	\$60	5.0
Classroom Speech Rm 2	6	Linear Fluorescent - T8: 4' T8 (32W) - 4L	Wall Switch	S	114	2,200	3, 4	Relamp	Yes	6	LED - Linear Tubes: (4) 4' Lamps	Occupancy Sensor	58	1,518	0.3	1,074	0	\$122	\$708	\$155	4.5
Classroom Speech Rm 3	6	Linear Fluorescent - T8: 4' T8 (32W) - 4L	Wall Switch	S	114	2,200	3, 4	Relamp	Yes	6	LED - Linear Tubes: (4) 4' Lamps	Occupancy Sensor	58	1,518	0.3	1,074	0	\$122	\$708	\$155	4.5
Computer Lab 74	1	Exit Signs: LED - 2 W Lamp	None		6	8,760		None	No	1	Exit Signs: LED - 2 W Lamp	None	6	8,760	0.0	0	0	\$0	\$0	\$0	0.0
Computer Lab 74	15	Linear Fluorescent - T8: 4' T8 (32W) - 4L	Wall Switch	S	114	2,200	3, 4	Relamp	Yes	15	LED - Linear Tubes: (4) 4' Lamps	Occupancy Sensor	58	1,518	0.8	2,685	-1	\$304	\$1,365	\$335	3.4
Computer Lab 74	1	Linear Fluorescent - T8: 4' T8 (32W) - 4L	Wall Switch	S	114	2,200	3	Relamp	No	1	LED - Linear Tubes: (4) 4' Lamps	Wall Switch	58	2,200	0.0	136	0	\$15	\$73	\$20	3.5
Corridor 1	5	Exit Signs: LED - 2 W Lamp	None		6	8,760		None	No	5	Exit Signs: LED - 2 W Lamp	None	6	8,760	0.0	0	0	\$0	\$0	\$0	0.0
Corridor 1	3	LED - Fixtures: Ambient 2x4 Fixture	Wall Switch	S	40	2,640	5	None	Yes	3	LED - Fixtures: Ambient 2x4 Fixture	High/Low Control	40	1,822	0.0	108	0	\$12	\$225	\$105	9.8

	Existing Conditions						Proposed Conditions								Energy Impact & Financial Analysis							
Location	Fixture Quantity	Fixture Description	Control System	Light Level	Watts per Fixture	Annual Operating Hours	ECM #	Fixture Recommendation	Add Controls?	Fixture Quantity	Fixture Description	Control System	Watts per Fixture	Annual Operating Hours	Total Peak kW Savings	Total Annual kWh Savings	Total Annual MMBtu Savings	Total Annual Energy Cost Savings	Estimated M&L Cost (\$)	Total Incentives	Simple Payback w/ Incentives in Years	
Corridor 1	1	LED - Fixtures: Ambient 2x4 Fixture	Wall Switch	S	40	2,640		None	No	1	LED - Fixtures: Ambient 2x4 Fixture	Wall Switch	40	2,640	0.0	0	0	\$0	\$0	\$0	0.0	
Corridor 1	2	LED - Fixtures: Ambient 2x4 Fixture	Wall Switch	S	40	2,640	5	None	Yes	2	LED - Fixtures: Ambient 2x4 Fixture	High/Low Control	40	1,822	0.0	72	0	\$8	\$225	\$70	19.0	
Corridor 3rd	1	Exit Signs: LED - 2 W Lamp	None		6	8,760		None	No	1	Exit Signs: LED - 2 W Lamp	None	6	8,760	0.0	0	0	\$0	\$0	\$0	0.0	
Corridor 3rd	17	LED - Fixtures: Ambient 2x4 Fixture	Wall Switch	S	40	2,640	5	None	Yes	17	LED - Fixtures: Ambient 2x4 Fixture	High/Low Control	40	1,822	0.2	612	0	\$69	\$675	\$595	1.2	
Corridor 4th	1	Exit Signs: LED - 2 W Lamp	None		6	8,760		None	No	1	Exit Signs: LED - 2 W Lamp	None	6	8,760	0.0	0	0	\$0	\$0	\$0	0.0	
Corridor 4th	1	LED - Fixtures: Ambient 2x4 Fixture	Wall Switch	S	40	2,640		None	No	1	LED - Fixtures: Ambient 2x4 Fixture	Wall Switch	40	2,640	0.0	0	0	\$0	\$0	\$0	0.0	
Corridor Cafeteria	7	Exit Signs: LED - 2 W Lamp	None		6	8,760		None	No	7	Exit Signs: LED - 2 W Lamp	None	6	8,760	0.0	0	0	\$0	\$0	\$0	0.0	
Corridor Cafeteria	5	LED - Fixtures: Ambient 2x2 Fixture	Wall Switch	S	30	2,640	5	None	Yes	5	LED - Fixtures: Ambient 2x2 Fixture	High/Low Control	30	1,822	0.0	135	0	\$15	\$225	\$175	3.3	
Corridor Cafeteria	39	LED - Fixtures: Ambient 2x4 Fixture	Wall Switch	S	40	2,640	5	None	Yes	39	LED - Fixtures: Ambient 2x4 Fixture	High/Low Control	40	1,822	0.3	1,404	-1	\$159	\$1,575	\$1,365	1.3	
Corridor CST	4	Exit Signs: LED - 2 W Lamp	None		6	8,760		None	No	4	Exit Signs: LED - 2 W Lamp	None	6	8,760	0.0	0	0	\$0	\$0	\$0	0.0	
Corridor CST	18	LED - Fixtures: Ambient 2x4 Fixture	Wall Switch	S	40	2,640	5	None	Yes	18	LED - Fixtures: Ambient 2x4 Fixture	High/Low Control	40	1,822	0.2	648	0	\$73	\$675	\$630	0.6	
Corridor Gym	3	Exit Signs: LED - 2 W Lamp	None		6	8,760		None	No	3	Exit Signs: LED - 2 W Lamp	None	6	8,760	0.0	0	0	\$0	\$0	\$0	0.0	
Corridor Gym	19	LED - Fixtures: Ambient 2x4 Fixture	Wall Switch	S	40	2,640	5	None	Yes	19	LED - Fixtures: Ambient 2x4 Fixture	High/Low Control	40	1,822	0.2	684	0	\$78	\$900	\$665	3.0	
Corridor Kindergarten	1	Exit Signs: LED - 2 W Lamp	None		6	8,760		None	No	1	Exit Signs: LED - 2 W Lamp	None	6	8,760	0.0	0	0	\$0	\$0	\$0	0.0	
Corridor Kindergarten	2	LED - Fixtures: Ambient 2x4 Fixture	Wall Switch	S	40	2,640	5	None	Yes	2	LED - Fixtures: Ambient 2x4 Fixture	High/Low Control	40	1,822	0.0	72	0	\$8	\$225	\$70	19.0	
Dining Area 1	4	Exit Signs: LED - 2 W Lamp	None		6	8,760		None	No	4	Exit Signs: LED - 2 W Lamp	None	6	8,760	0.0	0	0	\$0	\$0	\$0	0.0	
Dining Area 1	42	LED - Fixtures: Ambient 2x4 Fixture	Wall Switch	S	40	2,640	5	None	Yes	42	LED - Fixtures: Ambient 2x4 Fixture	High/Low Control	40	1,822	0.4	1,512	-1	\$171	\$675	\$675	0.0	
Dining Area 1	18	LED - Fixtures: Ceiling Mount	Wall Switch	S	12	2,640	4	None	Yes	18	LED - Fixtures: Ceiling Mount	Occupancy Sensor	12	1,822	0.0	194	0	\$22	\$540	\$70	21.3	
Exterior 2	2	Metal Halide: (1) 100W Lamp	Photocell		128	4,380	3	Relamp	No	2	LED Lamps - E39: ≤125 W Lamp	Photocell	30	4,380	0.0	858	0	\$105	\$306	\$100	2.0	
Exterior 2	26	Compact Fluorescent: (1) 26W Biaxial Plug-In Lamp	Photocell		26	4,380	3	Relamp	No	26	LED Lamps: GX23 (Plug-In) Lamps	Photocell	19	4,380	0.0	797	0	\$98	\$650	\$130	5.3	
Exterior 2	4	Compact Fluorescent: (1) 23W Spiral Plug-In Lamp	Photocell		23	4,380	3	Relamp	No	4	LED Lamps: A19 Lamps	Photocell	17	4,380	0.0	105	0	\$13	\$69	\$4	5.0	
Exterior 2	2	Compact Fluorescent: (1) 23W Spiral Plug-In Lamp	Photocell		23	4,380	3	Relamp	No	2	LED Lamps: A19 Lamps	Photocell	17	4,380	0.0	53	0	\$6	\$34	\$2	5.0	
Exterior 2	2	Halogen Incandescent: (1) 250W Screw-in Lamps	Photocell		250	0		None	No	2	Halogen Incandescent: (1) 250W Screw-in Lamps	Photocell	250	0	0.0	0	0	\$0	\$0	\$0	0.0	
Exterior 2	1	Incandescent: (1) 60W A19 Screw-In Lamp	Wall Switch		60	2,640	3	Relamp	No	1	LED Lamps: A19 Lamps	Wall Switch	9	2,640	0.0	135	0	\$17	\$17	\$1	1.0	
Exterior 2	2	LED - Fixtures: Flood Fixture	Wall Switch		50	2,640		None	No	2	LED - Fixtures: Flood Fixture	Wall Switch	50	2,640	0.0	0	0	\$0	\$0	\$0	0.0	

Existing Conditions							Proposed Conditions							Energy Impact & Financial Analysis							
Location	Fixture Quantity	Fixture Description	Control System	Light Level	Watts per Fixture	Annual Operating Hours	ECM #	Fixture Recommendation	Add Controls?	Fixture Quantity	Fixture Description	Control System	Watts per Fixture	Annual Operating Hours	Total Peak kW Savings	Total Annual kWh Savings	Total Annual MMBtu Savings	Total Annual Energy Cost Savings	Estimated M&L Cost (\$)	Total Incentives	Simple Payback w/ Incentives in Years
Office - CST	1	Exit Signs: LED - 2 W Lamp	None		6	8,760		None	No	1	Exit Signs: LED - 2 W Lamp	None	6	8,760	0.0	0	0	\$0	\$0	\$0	0.0
Office - CST	8	Linear Fluorescent - T8: 4' T8 (32W) - 4L	Wall Switch	S	114	2,640	3, 4	Relamp	Yes	8	LED - Linear Tubes: (4) 4' Lamps	Occupancy Sensor	58	1,822	0.4	1,719	-1	\$195	\$854	\$195	3.4
Office - CST	8	U-Bend Fluorescent - T8: U T8 (32W) - 3L	Wall Switch	S	92	2,640	3, 4	Relamp	Yes	8	LED - Linear Tubes: (3) U-Lamp	Occupancy Sensor	50	1,822	0.3	1,344	-1	\$152	\$1,140	\$155	6.5
Office - Enclosed 16	4	LED - Fixtures: Ambient 2x2 Fixture	Wall Switch	S	30	2,640	4	None	Yes	4	LED - Fixtures: Ambient 2x2 Fixture	Occupancy Sensor	30	1,822	0.0	108	0	\$12	\$270	\$35	19.2
Office - Enclosed 17	8	LED - Fixtures: Ambient 2x2 Fixture	Wall Switch	S	30	2,640	4	None	Yes	8	LED - Fixtures: Ambient 2x2 Fixture	Occupancy Sensor	30	1,822	0.1	216	0	\$24	\$270	\$35	9.6
Office - Enclosed 76	2	Linear Fluorescent - T8: 4' T8 (32W) - 4L	Wall Switch	S	114	2,640	3, 4	Relamp	Yes	2	LED - Linear Tubes: (4) 4' Lamps	Occupancy Sensor	58	1,822	0.1	430	0	\$49	\$262	\$60	4.1
Office - Enclosed Copy Rm	3	LED - Fixtures: Ambient 2x4 Fixture	Wall Switch	S	40	2,640	4	None	Yes	3	LED - Fixtures: Ambient 2x4 Fixture	Occupancy Sensor	40	1,822	0.0	108	0	\$12	\$270	\$35	19.2
Office - Enclosed CST 1	6	U-Bend Fluorescent - T8: U T8 (32W) - 3L	Wall Switch	S	92	2,640	3, 4	Relamp	Yes	6	LED - Linear Tubes: (3) U-Lamp	Occupancy Sensor	50	1,822	0.2	1,008	0	\$114	\$922	\$125	7.0
Office - Enclosed CST 2	2	Linear Fluorescent - T8: 4' T8 (32W) - 4L	Wall Switch	S	114	2,640	3, 4	Relamp	Yes	2	LED - Linear Tubes: (4) 4' Lamps	Occupancy Sensor	58	1,822	0.1	430	0	\$49	\$262	\$60	4.1
Office - Enclosed CST 3	2	Linear Fluorescent - T8: 4' T8 (32W) - 4L	Wall Switch	S	114	2,640	3, 4	Relamp	Yes	2	LED - Linear Tubes: (4) 4' Lamps	Occupancy Sensor	58	1,822	0.1	430	0	\$49	\$262	\$60	4.1
Office - Enclosed CST 4	2	Linear Fluorescent - T8: 4' T8 (32W) - 4L	Wall Switch	S	114	2,640	3, 4	Relamp	Yes	2	LED - Linear Tubes: (4) 4' Lamps	Occupancy Sensor	58	1,822	0.1	430	0	\$49	\$262	\$60	4.1
Office - Enclosed ESL 1	2	LED - Fixtures: Ambient 2x4 Fixture	Wall Switch	S	40	2,640	4	None	Yes	2	LED - Fixtures: Ambient 2x4 Fixture	Occupancy Sensor	40	1,822	0.0	72	0	\$8	\$116	\$20	11.8
Office - Enclosed ESL 2	2	LED - Fixtures: Ambient 2x4 Fixture	Wall Switch	S	40	2,640	4	None	Yes	2	LED - Fixtures: Ambient 2x4 Fixture	Occupancy Sensor	40	1,822	0.0	72	0	\$8	\$116	\$20	11.8
Office - Enclosed Faculty	17	LED - Fixtures: Ambient 2x2 Fixture	Wall Switch	S	30	2,640	4	None	Yes	17	LED - Fixtures: Ambient 2x2 Fixture	Occupancy Sensor	30	1,822	0.1	459	0	\$52	\$540	\$70	9.0
Office - Enclosed Music A	3	LED - Fixtures: Ambient 2x4 Fixture	Wall Switch	S	40	2,640	4	None	Yes	3	LED - Fixtures: Ambient 2x4 Fixture	Occupancy Sensor	40	1,822	0.0	108	0	\$12	\$270	\$35	19.2
Office - Enclosed Music B	2	LED - Fixtures: Ambient 2x4 Fixture	Wall Switch	S	40	2,640	4	None	Yes	2	LED - Fixtures: Ambient 2x4 Fixture	Occupancy Sensor	40	1,822	0.0	72	0	\$8	\$116	\$20	11.8
Office - Enclosed Nurse	6	LED - Fixtures: Ambient 2x4 Fixture	Wall Switch	S	40	2,640	4	None	Yes	6	LED - Fixtures: Ambient 2x4 Fixture	Occupancy Sensor	40	1,822	0.1	216	0	\$24	\$270	\$35	9.6
Office - Enclosed PE office	2	Linear Fluorescent - T8: 4' T8 (32W) - 4L	Wall Switch	S	114	2,640	3, 4	Relamp	Yes	2	LED - Linear Tubes: (4) 4' Lamps	Occupancy Sensor	58	1,822	0.1	430	0	\$49	\$262	\$60	4.1
Office - Enclosed Rm 74	2	Linear Fluorescent - T8: 4' T8 (32W) - 4L	Wall Switch	S	114	2,640	3, 4	Relamp	Yes	2	LED - Linear Tubes: (4) 4' Lamps	Occupancy Sensor	58	1,822	0.1	430	0	\$49	\$262	\$60	4.1
Office - Enclosed Superintendent	6	Linear Fluorescent - T8: 4' T8 (32W) - 4L	Wall Switch	S	114	2,640	3, 4	Relamp	Yes	6	LED - Linear Tubes: (4) 4' Lamps	Occupancy Sensor	58	1,822	0.3	1,289	-1	\$146	\$708	\$155	3.8
Office - Enclosed Work Rm	2	LED - Fixtures: Ambient 2x4 Fixture	Wall Switch	S	40	2,640	4	None	Yes	2	LED - Fixtures: Ambient 2x4 Fixture	Occupancy Sensor	40	1,822	0.0	72	0	\$8	\$116	\$20	11.8
Office - Open Plan Main	2	LED - Fixtures: Ambient 2x2 Fixture	Wall Switch	S	30	2,640	4	None	Yes	2	LED - Fixtures: Ambient 2x2 Fixture	Occupancy Sensor	30	1,822	0.0	54	0	\$6	\$116	\$20	15.7
Office - Open Plan Main	6	LED - Fixtures: Ambient 2x4 Fixture	Wall Switch	S	40	2,640	4	None	Yes	6	LED - Fixtures: Ambient 2x4 Fixture	Occupancy Sensor	40	1,822	0.1	216	0	\$24	\$270	\$35	9.6
Restroom - Boys	6	LED - Fixtures: Ambient 2x2 Fixture	Wall Switch	S	30	2,640	4	None	Yes	6	LED - Fixtures: Ambient 2x2 Fixture	Occupancy Sensor	30	1,822	0.0	162	0	\$18	\$270	\$35	12.8
Restroom - Boys	6	U-Bend Fluorescent - T8: U T8 (32W) - 2L	Wall Switch	S	62	2,640	3, 4	Relamp	Yes	6	LED - Linear Tubes: (2) U-Lamp	Occupancy Sensor	33	1,822	0.2	684	0	\$77	\$705	\$95	7.9

	Existing Conditions						Proposed Conditions								Energy Impact & Financial Analysis							
Location	Fixture Quantity	Fixture Description	Control System	Light Level	Watts per Fixture	Annual Operating Hours	ECM #	Fixture Recommendation	Add Controls?	Fixture Quantity	Fixture Description	Control System	Watts per Fixture	Annual Operating Hours	Total Peak kW Savings	Total Annual kWh Savings	Total Annual MMBtu Savings	Total Annual Energy Cost Savings	Estimated M&L Cost (\$)	Total Incentives	Simple Payback w/ Incentives in Years	
Restroom - Boys 1	4	LED - Fixtures: Ambient 2x4 Fixture	Wall Switch	S	40	2,640	4	None	Yes	4	LED - Fixtures: Ambient 2x4 Fixture	Occupancy Sensor	40	1,822	0.0	144	0	\$16	\$270	\$35	14.4	
Restroom - Female 1	1	LED - Fixtures: Ambient 2x2 Fixture	Wall Switch	S	30	2,640		None	No	1	LED - Fixtures: Ambient 2x2 Fixture	Wall Switch	30	2,640	0.0	0	0	\$0	\$0	\$0	0.0	
Restroom - Female 2	2	LED - Fixtures: Ambient 2x4 Fixture	Wall Switch	S	40	2,640	4	None	Yes	2	LED - Fixtures: Ambient 2x4 Fixture	Occupancy Sensor	40	1,822	0.0	72	0	\$8	\$116	\$20	11.8	
Restroom - Female 3	1	U-Bend Fluorescent - T8: U T8 (32W) - 2L	Wall Switch	S	62	2,640	3	Relamp	No	1	LED - Linear Tubes: (2) U-Lamp	Wall Switch	33	2,640	0.0	84	0	\$10	\$72	\$10	6.5	
Restroom - Female 5 Girls	3	LED - Fixtures: Ambient 2x2 Fixture	Wall Switch	S	30	2,640	4	None	Yes	3	LED - Fixtures: Ambient 2x2 Fixture	Occupancy Sensor	30	1,822	0.0	81	0	\$9	\$270	\$35	25.6	
Restroom - Female 5 Girls	1	LED - Fixtures: Ambient 2x4 Fixture	Wall Switch	S	40	2,640		None	No	1	LED - Fixtures: Ambient 2x4 Fixture	Wall Switch	40	2,640	0.0	0	0	\$0	\$0	\$0	0.0	
Restroom - Girls	5	LED - Fixtures: Ambient 2x2 Fixture	Wall Switch	S	30	2,640	4	None	Yes	5	LED - Fixtures: Ambient 2x2 Fixture	Occupancy Sensor	30	1,822	0.0	135	0	\$15	\$270	\$35	15.4	
Restroom - Girls Rm 1	4	LED - Fixtures: Ambient 2x4 Fixture	Wall Switch	S	40	2,640	4	None	Yes	4	LED - Fixtures: Ambient 2x4 Fixture	Occupancy Sensor	40	1,822	0.0	144	0	\$16	\$270	\$35	14.4	
Restroom - Male 1	1	LED - Fixtures: Ambient 2x2 Fixture	Wall Switch	S	30	2,640		None	No	1	LED - Fixtures: Ambient 2x2 Fixture	Wall Switch	30	2,640	0.0	0	0	\$0	\$0	\$0	0.0	
Restroom - Male 2	2	LED - Fixtures: Ambient 2x4 Fixture	Wall Switch	S	40	2,640	4	None	Yes	2	LED - Fixtures: Ambient 2x4 Fixture	Occupancy Sensor	40	1,822	0.0	72	0	\$8	\$116	\$20	11.8	
Restroom - Unisex	1	U-Bend Fluorescent - T8: U T8 (32W) - 2L	Wall Switch	S	62	2,640	3	Relamp	No	1	LED - Linear Tubes: (2) U-Lamp	Wall Switch	33	2,640	0.0	84	0	\$10	\$72	\$10	6.5	
Restroom - Unisex 3	1	Compact Fluorescent: (2) 18W Plug-in Lamps	Wall Switch	S	36	2,640	3	Relamp	No	1	LED Lamps: (1) 10W Plug-In Lamp	Wall Switch	10	2,640	0.0	76	0	\$9	\$27	\$2	2.9	
Restroom - Unisex CR10	1	Compact Fluorescent: (2) 18W Plug-in Lamps	Wall Switch	S	36	2,640	3	Relamp	No	1	LED Lamps: (1) 10W Plug-In Lamp	Wall Switch	10	2,640	0.0	76	0	\$9	\$27	\$2	2.9	
Restroom - Unisex CR11	1	Compact Fluorescent: (2) 18W Plug-in Lamps	Wall Switch	S	36	2,640	3	Relamp	No	1	LED Lamps: (1) 10W Plug-In Lamp	Wall Switch	10	2,640	0.0	76	0	\$9	\$27	\$2	2.9	
Restroom - Unisex CR12	1	Compact Fluorescent: (2) 18W Plug-in Lamps	Wall Switch	S	36	2,640	3	Relamp	No	1	LED Lamps: (1) 10W Plug-In Lamp	Wall Switch	10	2,640	0.0	76	0	\$9	\$27	\$2	2.9	
Restroom - Unisex CR13	1	Compact Fluorescent: (2) 18W Plug-in Lamps	Wall Switch	S	36	2,640	3	Relamp	No	1	LED Lamps: (1) 10W Plug-In Lamp	Wall Switch	10	2,640	0.0	76	0	\$9	\$27	\$2	2.9	
Restroom - Unisex CR14	1	Compact Fluorescent: (2) 18W Plug-in Lamps	Wall Switch	S	36	2,640	3	Relamp	No	1	LED Lamps: (1) 10W Plug-In Lamp	Wall Switch	10	2,640	0.0	76	0	\$9	\$27	\$2	2.9	
Restroom - Unisex CR15	1	Compact Fluorescent: (2) 18W Plug-in Lamps	Wall Switch	S	36	2,640	3	Relamp	No	1	LED Lamps: (1) 10W Plug-In Lamp	Wall Switch	10	2,640	0.0	76	0	\$9	\$27	\$2	2.9	
Restroom - Unisex CR16	1	Compact Fluorescent: (2) 18W Plug-in Lamps	Wall Switch	S	36	2,640	3	Relamp	No	1	LED Lamps: (1) 10W Plug-In Lamp	Wall Switch	10	2,640	0.0	76	0	\$9	\$27	\$2	2.9	
Restroom - Unisex CR17	1	Compact Fluorescent: (2) 18W Plug-in Lamps	Wall Switch	S	36	2,640	3	Relamp	No	1	LED Lamps: (1) 10W Plug-In Lamp	Wall Switch	10	2,640	0.0	76	0	\$9	\$27	\$2	2.9	
Restroom - Unisex CR31	1	LED - Fixtures: Ambient 2x4 Fixture	Wall Switch	S	40	2,640		None	No	1	LED - Fixtures: Ambient 2x4 Fixture	Wall Switch	40	2,640	0.0	0	0	\$0	\$0	\$0	0.0	
Restroom - Unisex PE Office	1	U-Bend Fluorescent - T8: U T8 (32W) - 2L	Wall Switch	S	62	2,640	3	Relamp	No	1	LED - Linear Tubes: (2) U-Lamp	Wall Switch	33	2,640	0.0	84	0	\$10	\$72	\$10	6.5	
Server Room 1	3	LED - Fixtures: Ambient 2x4 Fixture	Wall Switch	S	40	500		None	No	3	LED - Fixtures: Ambient 2x4 Fixture	Wall Switch	40	500	0.0	0	0	\$0	\$0	\$0	0.0	
Storage 1 Shed 2	9	LED - Fixtures: Vapor Proof Wrap	Wall Switch	S	30	500	4	None	Yes	9	LED - Fixtures: Vapor Proof Wrap	Occupancy Sensor	30	345	0.1	46	0	\$5	\$270	\$0	51.7	
Storage 11 Gym	2	Linear Fluorescent - T8: 4' T8 (32W) - 4L	Wall Switch	S	114	500	3, 4	Relamp	Yes	2	LED - Linear Tubes: (4) 4' Lamps	Occupancy Sensor	58	345	0.1	81	0	\$9	\$262	\$40	24.1	

	Existing Conditions						Proposed Conditions								Energy Impact & Financial Analysis							
Location	Fixture Quantity	Fixture Description	Control System	Light Level	Watts per Fixture	Annual Operating Hours	ECM #	Fixture Recommendation	Add Controls?	Fixture Quantity	Fixture Description	Control System	Watts per Fixture	Annual Operating Hours	Total Peak kW Savings	Total Annual kWh Savings	Total Annual MMBtu Savings	Total Annual Energy Cost Savings	Estimated M&L Cost (\$)	Total Incentives	Simple Payback w/ Incentives in Years	
Storage 12 Main Office	1	LED - Fixtures: Ambient 2x4 Fixture	Wall Switch	S	40	500		None	No	1	LED - Fixtures: Ambient 2x4 Fixture	Wall Switch	40	500	0.0	0	0	\$0	\$0	\$0	0.0	
Storage 13	4	LED - Fixtures: Ambient 2x4 Fixture	Wall Switch	S	40	500		None	No	4	LED - Fixtures: Ambient 2x4 Fixture	Wall Switch	40	500	0.0	0	0	\$0	\$0	\$0	0.0	
Storage 13	1	LED - Fixtures: Ambient - 4' - Direct Fixture	Wall Switch	S	20	500		None	No	1	LED - Fixtures: Ambient - 4' - Direct Fixture	Wall Switch	20	500	0.0	0	0	\$0	\$0	\$0	0.0	
Storage 14	4	LED - Fixtures: Ambient 2x4 Fixture	Wall Switch	S	40	500		None	No	4	LED - Fixtures: Ambient 2x4 Fixture	Wall Switch	40	500	0.0	0	0	\$0	\$0	\$0	0.0	
Storage 15 Oil Pump Rm	1	Linear Fluorescent - T8: 4' T8 (32W) - 2L	Wall Switch	S	62	500	3	Relamp	No	1	LED - Linear Tubes: (2) 4' Lamps	Wall Switch	29	500	0.0	18	0	\$2	\$37	\$10	12.9	
Storage 16 Stage	4	Compact Fluorescent: (1) 23W Spiral Plug-In Lamp	Wall Switch	S	23	500	3	Relamp	No	4	LED Lamps: A19 Lamps	Wall Switch	10	500	0.0	29	0	\$3	\$69	\$4	20.0	
Storage 16 Stage	3	LED - Fixtures: Ceiling Mount	Wall Switch	S	12	500		None	No	3	LED - Fixtures: Ceiling Mount	Wall Switch	12	500	0.0	0	0	\$0	\$0	\$0	0.0	
Storage 16 Stage	10	LED - Fixtures: Ceiling Mount	Wall Switch	S	15	500		None	No	10	LED - Fixtures: Ceiling Mount	Wall Switch	15	500	0.0	0	0	\$0	\$0	\$0	0.0	
Storage 7	3	LED - Fixtures: Ambient 2x4 Fixture	Wall Switch	S	40	500		None	No	3	LED - Fixtures: Ambient 2x4 Fixture	Wall Switch	40	500	0.0	0	0	\$0	\$0	\$0	0.0	
Storage Art Rm	2	LED - Fixtures: Ambient 2x4 Fixture	Wall Switch	S	40	500		None	No	2	LED - Fixtures: Ambient 2x4 Fixture	Wall Switch	40	500	0.0	0	0	\$0	\$0	\$0	0.0	
Storage Kitchen	3	Linear Fluorescent - T8: 4' T8 (32W) - 2L	Wall Switch	S	62	500	3, 4	Relamp	Yes	3	LED - Linear Tubes: (2) 4' Lamps	Occupancy Sensor	29	345	0.1	69	0	\$8	\$380	\$30	44.5	
Storage Receiving	6	LED - Fixtures: Ambient 2x4 Fixture	Wall Switch	S	40	500	4	None	Yes	6	LED - Fixtures: Ambient 2x4 Fixture	Occupancy Sensor	40	345	0.1	41	0	\$5	\$270	\$0	58.2	
Storage Records	2	Linear Fluorescent - T8: 4' T8 (32W) - 4L	Wall Switch	S	114	500	3, 4	Relamp	Yes	2	LED - Linear Tubes: (4) 4' Lamps	Occupancy Sensor	58	345	0.1	81	0	\$9	\$262	\$40	24.1	
Storage Rm 51	4	LED - Fixtures: Ambient 2x4 Fixture	Wall Switch	S	40	500		None	No	4	LED - Fixtures: Ambient 2x4 Fixture	Wall Switch	40	500	0.0	0	0	\$0	\$0	\$0	0.0	
Storage Rm 74	1	Linear Fluorescent - T8: 4' T8 (32W) - 4L	Wall Switch	S	114	500	3	Relamp	No	1	LED - Linear Tubes: (4) 4' Lamps	Wall Switch	58	500	0.0	31	0	\$3	\$73	\$20	15.2	
Storage Rm 76	1	Linear Fluorescent - T8: 4' T8 (32W) - 4L	Wall Switch	S	114	500	3	Relamp	No	1	LED - Linear Tubes: (4) 4' Lamps	Wall Switch	58	500	0.0	31	0	\$3	\$73	\$20	15.2	
Storage Science	2	Linear Fluorescent - T8: 4' T8 (32W) - 4L	Wall Switch	S	114	500	3, 4	Relamp	Yes	2	LED - Linear Tubes: (4) 4' Lamps	Occupancy Sensor	58	345	0.1	81	0	\$9	\$262	\$40	24.1	

Motor Inventory & Recommendations

Location	Area(s)/System(s) Served	Existing Conditions									Proposed Conditions					Energy Impact & Financial Analysis						
		Motor Quantity	Motor Application	HP Per Motor	Full Load Efficiency	VFD Control?	Manufacturer	Model	Remaining Useful Life	Annual Operating Hours	ECM #	Install High Efficiency Motors?	Full Load Efficiency	Install VFDs?	Number of VFDs	Total Peak kW Savings	Total Annual kWh Savings	Total Annual MMBtu Savings	Total Annual Energy Cost Savings	Estimated M&L Cost (\$)	Total Incentives	Simple Payback w/ Incentives in Years
Mechanical 1	Manfield Elementary School	2	Combustion Air Fan	3.0	85.5%	No	Marathon	5K48TN2182	W	533		No	85.5%	No		0.0	0	0	\$0	\$0	\$0	0.0
Classroom Science 76	Classroom Science 76	1	Exhaust Fan	0.3	65.0%	No	Unknown	Unknown	W	2,745		No	65.0%	No		0.0	0	0	\$0	\$0	\$0	0.0
Exterior 1	Manfield Elementary School	1	Exhaust Fan	0.3	65.0%	No	Unknown	Unknown	W	2,745		No	65.0%	No		0.0	0	0	\$0	\$0	\$0	0.0
Exterior 1	Manfield Elementary School	2	Exhaust Fan	0.2	65.0%	No	Unknown	Unknown	W	2,745		No	65.0%	No		0.0	0	0	\$0	\$0	\$0	0.0
Exterior 1	Manfield Elementary School	16	Exhaust Fan	0.3	65.0%	No	Unknown	Unknown	W	0		No	65.0%	No		0.0	0	0	\$0	\$0	\$0	0.0
Exterior 1	Manfield Elementary School	1	Exhaust Fan	0.5	70.0%	No	Unknown	Unknown	W	0		No	70.0%	No		0.0	0	0	\$0	\$0	\$0	0.0
Exterior 1	Manfield Elementary School	1	Exhaust Fan	0.3	65.0%	No	Unknown	Unknown	W	1,200		No	65.0%	No		0.0	0	0	\$0	\$0	\$0	0.0
Exterior 1	Manfield Elementary School	1	Exhaust Fan	0.1	65.0%	No	Unknown	Unknown	W	2,745		No	65.0%	No		0.0	0	0	\$0	\$0	\$0	0.0
Exterior 1	Manfield Elementary School	4	Exhaust Fan	0.5	70.0%	No	Unknown	Unknown	W	2,745		No	70.0%	No		0.0	0	0	\$0	\$0	\$0	0.0
Mechanical 1	Manfield Elementary School	2	Heating Hot Water Pump	2.0	78.5%	No	Baldor	VM3157	W	2,745		No	78.5%	No		0.0	0	0	\$0	\$0	\$0	0.0
Mechanical 1	Manfield Elementary School	1	DHW Circulation Pump	0.1	65.0%	No	Taco	0010-BF2	W	8,760		No	65.0%	No		0.0	0	0	\$0	\$0	\$0	0.0
Mechanical 1	Manfield Elementary School	1	Heating Hot Water Pump	0.5	70.0%	No	Taco	2400-50S-3P	W	2,745		No	70.0%	No		0.0	0	0	\$0	\$0	\$0	0.0
Mechanical 1	Manfield Elementary School	2	Heating Hot Water Pump	5.0	82.5%	No	US Motors	184T	W	2,745		No	82.5%	No		0.0	0	0	\$0	\$0	\$0	0.0
Mechanical 1	Manfield Elementary School	1	Heating Hot Water Pump	5.0	87.5%	No	Dayton	3KX04A	B	2,745		No	87.5%	No		0.0	0	0	\$0	\$0	\$0	0.0
Mechanical 1	Manfield Elementary School	1	Heating Hot Water Pump	5.0	89.5%	No	Leson	C184T17FB1	W	2,745		No	89.5%	No		0.0	0	0	\$0	\$0	\$0	0.0
Exterior 1	Kitchen	1	Kitchen Hood Exhaust Fan	1.5	86.5%	No	Unknown	Unknown	W	5,250		No	86.5%	No		0.0	0	0	\$0	\$0	\$0	0.0
Storage 15 Oil Pump Rm	Manfield Elementary School	2	Other	0.5	69.9%	No	Dayton	2N103BA	W	2,745		No	69.9%	No		0.0	0	0	\$0	\$0	\$0	0.0
Exterior 2	Manfield Elementary School	1	Water Supply Pump	1.0	85.5%	No	Unknown	Unknown	W	500		No	85.5%	No		0.0	0	0	\$0	\$0	\$0	0.0
Gymnasium 1	Gymnasium 1	2	Supply Fan	1.0	85.5%	No	Unknown	Unknown	W	2,745		No	85.5%	No		0.0	0	0	\$0	\$0	\$0	0.0
Mechanical 1	Cafeteria	1	Supply Fan	3.0	89.5%	No	Westinghouse	ABDP	W	2,745	6	No	89.5%	Yes	1	0.9	2,574	0	\$316	\$4,555	\$200	13.8



		Existing Conditions									Proposed Conditions					Energy Impact & Financial Analysis						
Location	Area(s)/System(s) Served	Motor Quantity	Motor Application	HP Per Motor	Full Load Efficiency	VFD Control?	Manufacturer	Model	Remaining Useful Life	Annual Operating Hours	ECM #	Install High Efficiency Motors?	Full Load Efficiency	Install VFDs?	Number of VFDs	Total Peak kW Savings	Total Annual kWh Savings	Total Annual MMBtu Savings	Total Annual Energy Cost Savings	Estimated M&L Cost (\$)	Total Incentives	Simple Payback w/ Incentives in Years
Storage 11 Gym	Manfield Elementary School	1	Supply Fan	1.0	85.5%	No	Unknown	Unknown	W	2,745		No	85.5%	No		0.0	0	0	\$0	\$0	\$0	0.0
Exterior 1	Kitchen	1	Supply Fan	2.0	84.0%	Yes	Baldor	526282	W	2,745		No	84.0%	No		0.0	0	0	\$0	\$0	\$0	0.0
Exterior 1	Cafeteria	1	Supply Fan	3.0	87.5%	No	Baldor	526283	W	2,745	6	No	89.5%	Yes	1	0.9	2,739	0	\$336	\$4,555	\$200	13.0
Exterior 1	Cafeteria	1	Supply Fan	3.0	87.5%	Yes	Baldor	526283	W	2,745		No	87.5%	No		0.0	0	0	\$0	\$0	\$0	0.0
Mansfield Elementary School	Manfield Elementary School	45	Supply Fan	0.3	65.0%	No	Unknown	Unknown	W	2,745		No	65.0%	No		0.0	0	0	\$0	\$0	\$0	0.0
Mansfield Elementary School	Manfield Elementary School	8	Supply Fan	0.3	65.0%	No	Unknown	Unknown	W	2,745		No	65.0%	No		0.0	0	0	\$0	\$0	\$0	0.0



Packaged HVAC Inventory & Recommendations

		Existing Conditions									Proposed Conditions								Energy Impact & Financial Analysis						
Location	Area(s)/System(s) Served	System Quantity	System Type	Cooling Capacity per Unit (Tons)	Heating Capacity per Unit (MBh)	Cooling Mode Efficiency (SEER/IEER/EER)	Heating Mode Efficiency	Manufacturer	Model	Remaining Useful Life	ECM #	Install High Efficiency System?	System Quantity	System Type	Cooling Capacity per Unit (Tons)	Heating Capacity per Unit (MBh)	Cooling Mode Efficiency (SEER/IEER/EER)	Heating Mode Efficiency	Total Peak kW Savings	Total Annual kWh Savings	Total Annual MMBtu Savings	Total Annual Energy Cost Savings	Estimated M&L Cost (\$)	Total Incentives	Simple Payback w/ Incentives in Years
Exterior 1	Mansfield Elementary School	1	Split-System	3.00		20.00		Trane	4TTR7036A1000 CA	W		No							0.0	0	0	\$0	\$0	\$0	0.0
Exterior 1	Mansfield Elementary School	1	Split-System	12.50	150.00	9.00		Carrier	38AKS014---510--	B	7	Yes	1	Split-System	12.50	150.00	14.00		3.0	2,381	0	\$292	\$19,191	\$1,113	61.9
Exterior 1	Mansfield Elementary School	35	Unit Ventilator	3.42	41.00	11.00		Thermal Zone	TZAL-342-CC	W		No							0.0	0	0	\$0	\$0	\$0	0.0
Exterior 1	Mansfield Elementary School	1	Split-System	2.00		20.00		Trane	4TTR7024A1000 CA	W		No							0.0	0	0	\$0	\$0	\$0	0.0
Exterior 1	Mansfield Elementary School	5	Split-System	3.00		12.00		Trane	2TTB2036A1000 AA	B		No							0.0	0	0	\$0	\$0	\$0	0.0
Exterior 1	Mansfield Elementary School	1	Unit Ventilator	2.00	24.00	11.00		Thermal Zone	TZAL-624-2A	W		No							0.0	0	0	\$0	\$0	\$0	0.0
Exterior 1	Mansfield Elementary School	2	Split-System	5.00	60.00	8.00		AAF	4167A-1-60A	B	7	Yes	2	Split-System	5.00	60.00	16.00		3.8	3,000	0	\$368	\$19,887	\$1,050	51.2
Generator Room	Generator Room	1	Electric Resistance Heat		17.06		1 COP	Federal Pacific	Unknown	W		No							0.0	0	0	\$0	\$0	\$0	0.0
Exterior 1	Mansfield Elementary School	1	Ductless Mini-Split AC	2.75		8.50		Fujitsu	AOU36CLX1	B	7	Yes	1	Ductless Mini-Split AC	2.75		18.00		1.0	820	0	\$101	\$4,106	\$0	40.8
Exterior 1	Mansfield Elementary School	1	Ductless Mini-Split AC	2.00		9.00		United Technologies Carrier	Unknown	B	7	Yes	1	Ductless Mini-Split AC	2.00		18.00		0.7	533	0	\$65	\$3,922	\$0	59.9
Exterior 1	Conference Room	1	Ductless Mini-Split HP	1.46	18.00	8.50	7.7 COP	Fujitsu	AOU18R1	B	8	Yes	1	Ductless Mini-Split HP	1.46	18.00	18.00	3.8 COP	0.5	435	0	\$53	\$3,449	\$0	64.7
Exterior 1	Mansfield Elementary School	1	Ductless Mini-Split HP	2.00	18.00	12.70	7.7 COP	Daikin Industries	3MXS24NMVJU	B		No							0.0	0	0	\$0	\$0	\$0	0.0
Exterior 1	Mansfield Elementary School	1	Ductless Mini-Split HP	2.80	36.40	8.30	7.7 COP	Carrier	38GVQ036---3	B	8	Yes	1	Ductless Mini-Split HP	2.80	36.40	18.00	3.8 COP	1.1	873	0	\$107	\$5,828	\$0	54.4
Exterior 1	Mansfield Elementary School	1	Package Unit	8.25		12.00		Carrier	50HC-E09H3A5A1F0F0	W		No							0.0	0	0	\$0	\$0	\$0	0.0
Exterior 1	Mansfield Elementary School	2	Package Unit	5.58		13.00		Trane	THC067E3R0A25 G6C0A2B6B0C40 000C000000000 0	W		No							0.0	0	0	\$0	\$0	\$0	0.0
Exterior 1	Mansfield Elementary School	1	Package Unit	5.00		11.10		Carrier	50HJ-006---521LA	B		No							0.0	0	0	\$0	\$0	\$0	0.0
Exterior 1	Cafeteria	2	Package Unit	10.00		12.20		York	ZJ120N20N2FZZ 70002A	W		No							0.0	0	0	\$0	\$0	\$0	0.0
Exterior 1	Kitchen	1	Package Unit	6.50		12.20		York	ZJ078N15N2EZZ 7000	W		No							0.0	0	0	\$0	\$0	\$0	0.0
Mansfield Elementary School	Mansfield Elementary School	8	Unit Ventilator	2.00	24.00	10.00		AAF	BBAEVSPAAZ60 015000X	W		No							0.0	0	0	\$0	\$0	\$0	0.0
Exterior 1	Language	1	Ductless Mini-Split HP	2.00	25.00	12.50	7.7 COP	Mitsubishi	NTXMPH24A132 AA	W		No							0.0	0	0	\$0	\$0	\$0	0.0

Space Heating Boiler Inventory & Recommendations

		Existing Conditions						Proposed Conditions							Energy Impact & Financial Analysis						
Location	Area(s)/System(s) Served	System Quantity	System Type	Output Capacity per Unit (MBh)	Manufacturer	Model	Remaining Useful Life	ECM #	Install High Efficiency System?	System Quantity	System Type	Output Capacity per Unit (MBh)	Heating Efficiency	Heating Efficiency Units	Total Peak kW Savings	Total Annual kWh Savings	Total Annual MMBtu Savings	Total Annual Energy Cost Savings	Estimated M&L Cost (\$)	Total Incentives	Simple Payback w/ Incentives in Years
Mechanical 1	Mansfield Elementary School	2	Non-Condensing Hot Water Boiler	2,758	Burnham	KV1117HWML	W	9	Yes	2	Non-Condensing Hot Water Boiler	2,750	85.00%	Ec	0.0	0	226	\$5,030	\$128,073	\$7,150	24.0

DHW Inventory & Recommendations

		Existing Conditions					Proposed Conditions							Energy Impact & Financial Analysis						
Location	Area(s)/System(s) Served	System Quantity	System Type	Manufacturer	Model	Remaining Useful Life	ECM #	Replace?	System Quantity	System Type	Fuel Type	System Efficiency	Efficiency Units	Total Peak kW Savings	Total Annual kWh Savings	Total Annual MMBtu Savings	Total Annual Energy Cost Savings	Estimated M&L Cost (\$)	Total Incentives	Simple Payback w/ Incentives in Years
Mechanical 1	Mansfield Elementary School	1	Boiler	AO Smith	HW-300 301	W		No						0.0	0	0	\$0	\$0	\$0	0.0
Kitchen 1	Kitchen 1	1	Booster Water Heater	Hatco	C-24	W		No						0.0	0	0	\$0	\$0	\$0	0.0

Low-Flow Device Recommendations

		Recommendation Inputs				Energy Impact & Financial Analysis						
Location	ECM #	Device Quantity	Device Type	Existing Flow Rate (gpm)	Proposed Flow Rate (gpm)	Total Peak kW Savings	Total Annual kWh Savings	Total Annual MMBtu Savings	Total Annual Energy Cost Savings	Estimated M&L Cost (\$)	Total Incentives	Simple Payback w/ Incentives in Years
Mansfield Elementary School	10	2	Faucet Aerator (Kitchen)	1.80	1.50	0.0	0	0	\$11	\$14	\$4	0.9
PE Office	10	1	Faucet Aerator (Lavatory)	1.80	0.50	0.0	0	0	\$24	\$7	\$4	0.1
Kitchen 1	10	1	Faucet Aerator (Kitchen)	2.20	1.50	0.0	0	0	\$13	\$7	\$2	0.4
Kitchen 1	10	1	Pre-Rinse Spray Valve	2.20	1.28	0.0	0	1	\$69	\$124	\$0	1.8

Walk-In Cooler/Freezer Inventory & Recommendations

		Existing Conditions			Proposed Conditions				Energy Impact & Financial Analysis						
Location	Cooler/Freezer Quantity	Case Type/Temperature	Manufacturer	Model	ECM #	Install EC Evaporator Fan Motors?	Install Electric Defrost Control?	Install Evaporator Fan Control?	Total Peak kW Savings	Total Annual kWh Savings	Total Annual MMBtu Savings	Total Annual Energy Cost Savings	Estimated M&L Cost (\$)	Total Incentives	Simple Payback w/ Incentives in Years
Kitchen 1/Exterior 1	1	Cooler (35F to 55F)	Heatcraft	Unknown		No	No	No	0.0	0	0	\$0	\$0	\$0	0.0
Kitchen 1/Exterior 1	1	Medium Temp Freezer (0F to 30F)	Tecumseh	AWA2464ZTXC		No	No	No	0.0	0	0	\$0	\$0	\$0	0.0

Commercial Refrigerator/Freezer Inventory & Recommendations

Existing Conditions						Proposed Conditions		Energy Impact & Financial Analysis						
Location	Quantity	Refrigerator/ Freezer Type	Manufacturer	Model	ENERGY STAR Qualified?	ECM #	Install ENERGY STAR Equipment?	Total Peak kW Savings	Total Annual kWh Savings	Total Annual MMBtu Savings	Total Annual Energy Cost Savings	Estimated M&L Cost (\$)	Total Incentives	Simple Payback w/ Incentives in Years
Kitchen 1	1	Freezer Chest	GE	Unknown	No		No	0.0	0	0	\$0	\$0	\$0	0.0
Kitchen Faculty	1	Freezer Chest	Unknown	Unknown	No		No	0.0	0	0	\$0	\$0	\$0	0.0
Kitchen 1	2	Refrigerator Chest	Norlake	NOAR122WVS/0A	No		No	0.0	0	0	\$0	\$0	\$0	0.0
Kitchen 1	2	Refrigerator Chest	Unknown	Unknown	No		No	0.0	0	0	\$0	\$0	\$0	0.0
Kitchen 1	1	Stand-Up Freezer, Solid Door (16 - 30 cu. ft.)	Hoshizaki	CF1S-FS	No		No	0.0	0	0	\$0	\$0	\$0	0.0
Kitchen 1	1	Stand-Up Refrigerator, Solid Door (16 - 30 cu. ft.)	Arctic Air	AR23E	Yes		No	0.0	0	0	\$0	\$0	\$0	0.0

Cooking Equipment Inventory & Recommendations

Existing Conditions						Proposed Conditions		Energy Impact & Financial Analysis						
Location	Quantity	Equipment Type	Manufacturer	Model	High Efficiency Equipment?	ECM #	Install High Efficiency Equipment?	Total Peak kW Savings	Total Annual kWh Savings	Total Annual MMBtu Savings	Total Annual Energy Cost Savings	Estimated M&L Cost (\$)	Total Incentives	Simple Payback w/ Incentives in Years
Kitchen 1	1	Electric Combination Oven/Steam Cooker (<15 Pans)	Eloma GmbH	GENIUS MT 10-11	No		No	0.0	0	0	\$0	\$0	\$0	0.0
Kitchen 1	1	Electric Griddle (3 Feet Width)	Unknown	Unknown	No		No	0.0	0	0	\$0	\$0	\$0	0.0
Kitchen 1	2	Insulated Food Holding Cabinet (1/2 Size)	Win-Holt	NSF ETL	No		No	0.0	0	0	\$0	\$0	\$0	0.0
Kitchen 1	1	Gas Rack Oven (Double)	Vulcan	Unknown	No		No	0.0	0	0	\$0	\$0	\$0	0.0
Kitchen 1	1	Gas Rack Oven (Single)	Vulcan	Unknown	No		No	0.0	0	0	\$0	\$0	\$0	0.0
Kitchen 1	1	Electric Combination Oven/Steam Cooker (<15 Pans)	Unknown	Unknown	No		No	0.0	0	0	\$0	\$0	\$0	0.0

Dishwasher Inventory & Recommendations

Plug Load Inventory

Existing Conditions						
Location	Quantity	Equipment Description	Energy Rate (W)	ENERGY STAR Qualified ?	Manufacturer	Model
Mansfield Elementary School	12	Coffee Machine	800	No	Varied	Varied
Mansfield Elementary School	21	Desktop	270	No	Varied	Varied
Server Room	8	Desktop	270	No	Dell	Unknown
Office - Enclosed Superintendent	1	Fan	100	Yes	Unknown	Unknown
Art Room	1	Kiln	11,520	No	Skuttt	KM-1227
Mansfield Elementary School	800	Laptop	75	No	Varied	Varied
Mansfield Elementary School	18	Microwave	800	Yes	Varied	Varied
Mansfield Elementary School	6	Hand Dryer	1,150	No	Dyson	FT8-XE-HEA0404A
Mansfield Elementary School	3	Paper Shredder	200	No	Unknown	Unknown
Mansfield Elementary School	10	Printer	150	Yes	Varied	Varied
Mansfield Elementary School	8	Copier	1,200	Yes	Savin	Varied
Mansfield Elementary School	2	Projector	200	Yes	Unknown	Unknown
Mansfield Elementary School	16	Mini Refrigerator	126	No	Varied	Varied
Mansfield Elementary School	5	Refrigerator	383	No	Varied	Varied
Mansfield Elementary School	54	Smart Board	200	Yes	Varied	Varied
Mansfield Elementary School	6	Toaster Oven	1,500	No	Varied	Varied
Mansfield Elementary School	5	Water Fountain	575	No	Elkay	EZFS8
Mansfield Elementary School	4	Television	120	No	Varied	Varied
Mansfield Elementary School	24	UV Lights	68	No	Unknown	Unknown



Vending Machine Inventory & Recommendations


	Existing Conditions		Proposed Conditions		Energy Impact & Financial Analysis						
Location	Quantity	Vending Machine Type	ECM #	Install Controls?	Total Peak kW Savings	Total Annual kWh Savings	Total Annual MMBtu Savings	Total Annual Energy Cost Savings	Estimated M&L Cost (\$)	Total Incentives	Simple Payback w/ Incentives in Years
Faculty Room	1	Refrigerated	N/A	No	0.0	0	0	\$0	\$0	\$0	0.0
Faculty Room	1	Non-Refrigerated	N/A	No	0.0	0	0	\$0	\$0	\$0	0.0


Miscellaneous Fuel Inventory

	Existing Conditions					
Location	Quantity	Equipment Description	Input Capacity per Unit (MBh)	ENERGY STAR Qualified ?	Manufacturer	Model
Generator Rm	1	Generator	40.0	No	Gillette Generators	SP-410-3-2LO (NO)

APPENDIX B: ENERGY STAR STATEMENT OF ENERGY PERFORMANCE

Energy use intensity (EUI) is presented in terms of *site energy* and *source energy*. Site energy is the amount of fuel and electricity consumed by a building as reflected in utility bills. Source energy includes fuel consumed to generate electricity consumed at the site, factoring in electric production and distribution losses for the region.


ENERGY STAR[®] Statement of Energy Performance



ENERGY STAR[®] Score¹

Mansfield Elementary School

Primary Property Type: K-12 School
Gross Floor Area (ft²): 93,515
Built: 1963

For Year Ending: November 30, 2022
Date Generated: June 05, 2023

1. The ENERGY STAR score is a 1-100 assessment of a building's energy efficiency as compared with similar buildings nationwide, adjusting for climate and business activity.

Property & Contact Information			
Property Address Mansfield Elementary School 50 Port Murray Road Port Murray, New Jersey 07865	Property Owner Mansfield School District 50 Port Murray Road Port Murray, NJ 07865 (908) 689-3212	Primary Contact Paul Deangelo 50 Port Murray Road Port Murray, NJ 07865 (908) 689-3212 x 1185 deangelo@mansfieldtsd.org	
Property ID: 25789337			

Energy Consumption and Energy Use Intensity (EUI)			
Site EUI	Annual Energy by Fuel		National Median Comparison
58.7 kBtu/ft²	Propane (kBtu)	37,324 (1%)	National Median Site EUI (kBtu/ft²) 72.3
	Fuel Oil (No. 2) (kBtu)	3,661,444 (67%)	National Median Source EUI (kBtu/ft²) 115.2
	Electric - Grid (kBtu)	1,785,949 (33%)	% Diff from National Median Source EUI -19%
Source EUI			Annual Emissions
93.4 kBtu/ft²			Total (Location-Based) GHG Emissions (Metric Tons CO2e/year) 430

Signature & Stamp of Verifying Professional

I _____ (Name) verify that the above information is true and correct to the best of my knowledge.

LP Signature: _____ Date: _____

Licensed Professional

 () - _____



Professional Engineer or Registered Architect Stamp (if applicable)

APPENDIX C: GLOSSARY

TERM	DEFINITION
Blended Rate	Used to calculate fiscal savings associated with measures. The blended rate is calculated by dividing the amount of your bill by the total energy use. For example, if your bill is \$22,217.22, and you used 266,400 kilowatt-hours, your blended rate is 8.3 cents per kilowatt-hour.
Btu	<i>British thermal unit</i> : a unit of energy equal to the amount of heat required to increase the temperature of one pound of water by one-degree Fahrenheit.
CHP	<i>Combined heat and power</i> . Also referred to as cogeneration.
COP	<i>Coefficient of performance</i> : a measure of efficiency in terms of useful energy delivered divided by total energy input.
Demand Response	Demand response reduces or shifts electricity usage at or among participating buildings/sites during peak energy use periods in response to time-based rates or other forms of financial incentives.
DCV	<i>Demand control ventilation</i> : a control strategy to limit the amount of outside air introduced to the conditioned space based on actual occupancy need.
US DOE	<i>United States Department of Energy</i>
EC Motor	<i>Electronically commutated motor</i>
ECM	<i>Energy conservation measure</i>
EER	<i>Energy efficiency ratio</i> : a measure of efficiency in terms of cooling energy provided divided by electric input.
EUI	<i>Energy Use Intensity</i> : measures energy consumption per square foot and is a standard metric for comparing buildings' energy performance.
Energy Efficiency	Reducing the amount of energy necessary to provide comfort and service to a building/area. Achieved through the installation of new equipment and/or optimizing the operation of energy use systems. Unlike conservation, which involves some reduction of service, energy efficiency provides energy reductions without sacrifice of service.
ENERGY STAR	ENERGY STAR is the government-backed symbol for energy efficiency. The ENERGY STAR program is managed by the EPA.
EPA	<i>United States Environmental Protection Agency</i>
Generation	The process of generating electric power from sources of primary energy (e.g., natural gas, the sun, oil).
GHG	<i>Greenhouse gas</i> gases that are transparent to solar (short-wave) radiation but opaque to long-wave (infrared) radiation, thus preventing long-wave radiant energy from leaving Earth's atmosphere. The net effect is a trapping of absorbed radiation and a tendency to warm the planet's surface.
gpf	<i>Gallons per flush</i>

gpm	<i>Gallon per minute</i>
HID	<i>High intensity discharge</i> : high-output lighting lamps such as high-pressure sodium, metal halide, and mercury vapor.
hp	<i>Horsepower</i>
HPS	<i>High-pressure sodium</i> : a type of HID lamp.
HSPF	<i>Heating seasonal performance factor</i> : a measure of efficiency typically applied to heat pumps. Heating energy provided divided by seasonal energy input.
HVAC	<i>Heating, ventilating, and air conditioning</i>
IHP 2014	US DOE Integral Horsepower rule. The current ruling regarding required electric motor efficiency.
IPLV	<i>Integrated part load value</i> : a measure of the part load efficiency usually applied to chillers.
kBtu	One thousand British thermal units
kW	<i>Kilowatt</i> : equal to 1,000 Watts.
kWh	<i>Kilowatt-hour</i> : 1,000 Watts of power expended over one hour.
LED	<i>Light emitting diode</i> : a high-efficiency source of light with a long lamp life.
LGEA	<i>Local Government Energy Audit</i>
Load	The total power a building or system is using at any given time.
Measure	A single activity, or installation of a single type of equipment, that is implemented in a building system to reduce total energy consumption.
MH	<i>Metal halide</i> : a type of HID lamp.
MBh	<i>Thousand Btu per hour</i>
MBtu	<i>One thousand British thermal units</i>
MMBtu	<i>One million British thermal units</i>
MV	<i>Mercury Vapor</i> : a type of HID lamp.
NJBPU	<i>New Jersey Board of Public Utilities</i>
NJCEP	<i>New Jersey's Clean Energy Program</i> : NJCEP is a statewide program that offers financial incentives, programs and services for New Jersey residents, business owners and local governments to help them save energy, money, and the environment.
psig	Pounds per square inch gauge
Plug Load	Refers to the amount of power used in a space by products that are powered by means of an ordinary AC plug.
PV	<i>Photovoltaic</i> : refers to an electronic device capable of converting incident light directly into electricity (direct current).

SEER	<i>Seasonal energy efficiency ratio</i> : a measure of efficiency in terms of annual cooling energy provided divided by total electric input.
SEP	<i>Statement of energy performance</i> : a summary document from the ENERGY STAR Portfolio Manager.
Simple Payback	The amount of time needed to recoup the funds expended in an investment or to reach the break-even point between investment and savings.
SREC (II)	<i>Solar renewable energy credit</i> : a credit you can earn from the state for energy produced from a photovoltaic array.
T5, T8, T12	A reference to a linear lamp diameter. The number represents increments of 1/8 th of an inch.
Temperature Setpoint	The temperature at which a temperature regulating device (thermostat, for example) has been set.
therm	100,000 Btu. Typically used as a measure of natural gas consumption.
tons	A unit of cooling capacity equal to 12,000 Btu/hr.
Turnkey	Provision of a complete product or service that is ready for immediate use.
VAV	<i>Variable air volume</i>
VFD	<i>Variable frequency drive</i> : a controller used to vary the speed of an electric motor.
WaterSense®	The symbol for water efficiency. The WaterSense® program is managed by the EPA.
Watt (W)	Unit of power commonly used to measure electricity use.