

Combined Heat & Power and Fuel Cell

For a **CLEANER** and **GREENER** Future for New Jersey



New Jersey's Clean Energy Program empowers your choice for a clean energy future. It's true! By implementing energy efficient practices, you can help make a positive impact on our climate. The CHP and FC program helps enhance energy efficiency through on-site power generation with heat recovery.



Benefits

- Reduced demand on power grid
- Lower energy bills
- Lessen greenhouse gas emissions
- Operate as backup power



Incentives

- **Earn up to 40%** of your total project
- **Up to 30%** bonus incentives for CHP systems using biofuel
- **Up to 25%** of additional incentives for critical facilities incorporating blackstart and islanding technology



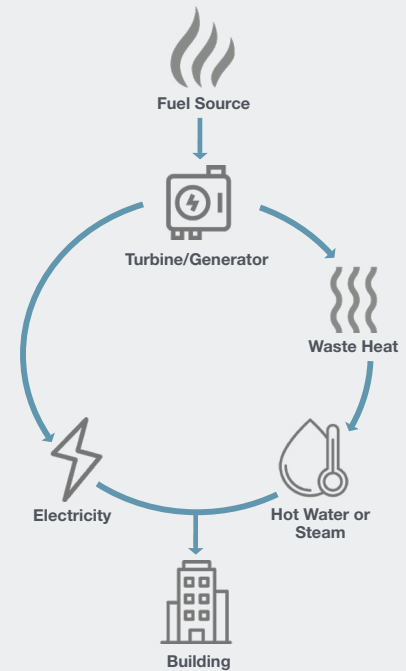
Eligibility

Existing and new construction commercial, industrial, and large multifamily properties with a commercial account that have year-round coincident power needs.

Projects must meet system eligibility criteria. See [program guide](#) for details.

What is the CHP/FC process?

A CHP fuel source, such as natural gas, is used to spin a turbine that generates electricity. Similarly, fuel cells produce electricity through an electrochemical reaction from a fuel source.



The hot exhaust is recovered and re-used as part of the building's HVAC system, or as steam for manufacturing processes.

Is a Combined Heat & Power System Right For Me?

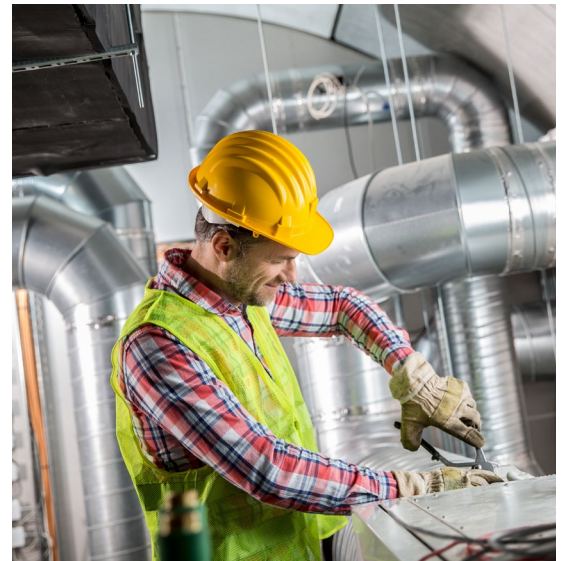


CHP Feasibility Study

One of the largest barriers to choosing combined heat and power is the cost and whether it's a smart choice for your project.

Now you can do an evaluation of a CHP system at **half the cost, up to \$50,000**, with help from the CHP Feasibility Study incentive.

The study will evaluate if the solution of combined heat and power systems and fuel cells repurposing electricity and waste heat suits your project. If you choose to use a CHP system, this incentive can help you make your project even more cost-effective.



Eligibility



- Existing and new construction commercial and industrial facilities or multifamily properties
- Applies to systems producing electricity and waste heat to be repurposed on site

Potential Candidates



- Healthcare
- Local Government
- Colleges & Universities
- Hospitality
- Industrial
- Residential Multifamily

Next Steps:

- 1 Submit application
- 2 Receive application
- 3 Complete Feasibility Study
- 4 Submit completed Feasibility Study
- 5 **Incentives paid**



www.NJCleanEnergy.com/CHP

CHP@NJCleanEnergy.com | 866-NJSMART

   Follow us @NJCleanEnergy

[Subscribe](#) to our Newsletter