



NJ Solar Market Update

**Prepared by Charlie Garrison
August 13, 2014**



Solar Installed Capacity Data

- The preliminary installed solar capacity as of 7/31/14 is approximately 1,336.8 MW.
 - Approximately 17.6 MW reported as installed in July.
 - The added capacity is equal to the most recent 12 month average and is approximately 22% below the six month average of 22.6 MW.
- The preliminary solar capacity project pipeline as of 7/31/14 is approximately 358.3 MW.

For program reporting purposes, projects have achieved the "Installed" designation when the Final as-built documents are received and accepted by the Market Manager (noted as QC or QA Selected status in the project list).



NJCEP Solar Installed Projects Plus Pipeline History

NJCEP Solar Installed Projects Plus Pipeline History as of 7/31/14			
As Of	MW Installed	MW Pipeline	Combined MW
1/31/2013	999.8	704.9	1,704.7
2/28/2013	1,034.5	675.4	1,709.9
3/31/2013	1,052.8	675.5	1,728.3
4/30/2013	1,075.9	660.2	1,736.1
5/31/2013	1,098.5	656.9	1,755.4
6/30/2013	1,114.3	562.5	1,676.8
7/31/2013	1,125.8	516.9	1,642.7
8/31/2013	1,134.3	357.1	1,491.4
9/30/2013	1,142.3	354.4	1,496.7
10/31/2013	1,155.4	357.4	1,512.8
11/30/2013	1,168.1	346.3	1,514.4
12/31/2013	1,184.5	338.0	1,522.5
1/31/2014	1,201.4	323.5	1,524.9
2/28/2014	1,245.5	284.7	1,530.2
3/31/2014	1,267.1	224.8	1,491.9
4/30/2014	1,272.9	357.2	1,630.1
5/31/2014	1,298.1	352.9	1,651.0
6/30/2014	1,319.2	345.7	1,664.9
7/31/2014	1,336.8	358.3	1,695.1

Preliminary values for 7/31/14



NJCEP Solar Installed Projects Plus Pipeline Projects Summary

NJCEP Solar Installed Projects Plus Pipeline Projects Preliminary Values As of 7/31/14

Installed Solar Projects

Interconnection Type	Project Qty	Total Capacity (KW DC)	Percent of Capacity	Avg System Size (kW DC)
Behind the meter	29,294	1,070,775.0	80.1%	36.6
Direct Grid Supply	119	266,054.1	19.9%	2,235.7
Installed Totals	29,413	1,336,829.0	100.0%	45.5

Solar Project Pipeline

Interconnection Type	Project Qty	Total Capacity (KW DC)	Percent of Capacity	Avg System Size (kW DC)
Behind the meter	4,538	80,862.6	22.6%	17.8
Direct Grid Supply	36	277,431.7	77.4%	7,706.4
Pipeline Totals	4,574	358,294.3	100.0%	78.3

Totals For All Projects	33,987	1,695,123.4		49.9
--------------------------------	---------------	--------------------	--	-------------



NJCEP Direct Grid Supply Solar Project Summary

NJCEP Direct Grid Supply Solar Installed Projects As Of 07/31/14			
Description	Project Qty	Total Capacity (KW dc)	Percent of Capacity
EDC Projects	76	78,465.1	29.5%
Subsection q	6	32,495.0	12.2%
Subsection r	-	-	0.0%
Subsection s	3	12,687.7	4.8%
Subsection t	1	19,880.6	7.5%
Other	33	122,525.7	46.1%
Installed Totals	119	266,054.1	100.0%



NJCEP Direct Grid Supply Solar Project Summary

NJCEP Direct Grid Supply Solar Project Pipeline As Of 07/31/14			
Description	Project Qty	Total Capacity (KW dc)	Percent of Capacity
EDC Projects	-	-	0.0%
Subsection q	28	196,747.0	70.9%
Subsection r	-	-	0.0%
Subsection s	-	-	0.0%
Subsection t	4	37,583.0	13.6%
Other	4	43,101.7	15.5%
Pipeline Totals	36	277,431.7	100.0%



NJCEP Direct Grid Supply Solar Project Summary

NJCEP Subsection q Project Summary By Energy Year As Of 07/31/14

Energy Year	Subsection q Installed Projects		Subsection q Project Pipeline		Subsection q Installed Projects Plus Pipeline Projects	
	Project Qty	Total Capacity (KW dc)	Project Qty	Total Capacity (KW dc)	Project Qty	Total Capacity (KW dc)
EY14	5	24,049.5	9	55,880.0	14	79,929.5
EY15	1	8,445.6	10	71,061.0	11	79,506.6
EY16	-	-	9	69,806.0	9	69,806.0
Totals	6	32,495.0	28	196,747.0	34	229,242.0

Note: The above table provides the SRP project status as of the report date. This information is a snapshot of the program activity as of the report date. Changes to the project status or system size that may be under various stages of review are not reported here until the changes are accepted and the information is entered into the SRP Program database.



Summary of TPO Use For NJCEP Installed Solar Projects

All Behind the Meter Installed Projects As of 07/31/14				
TPO Code	Description	Project Qty	Total Capacity (KW dc)	Percent of Capacity
0	Did Not use TPO	4,545	202,400	25.8%
1	Used TPO	15,968	583,406	74.2%
	Totals	20,513	785,806	100%
Blank	Unknown	8,781	284,969	

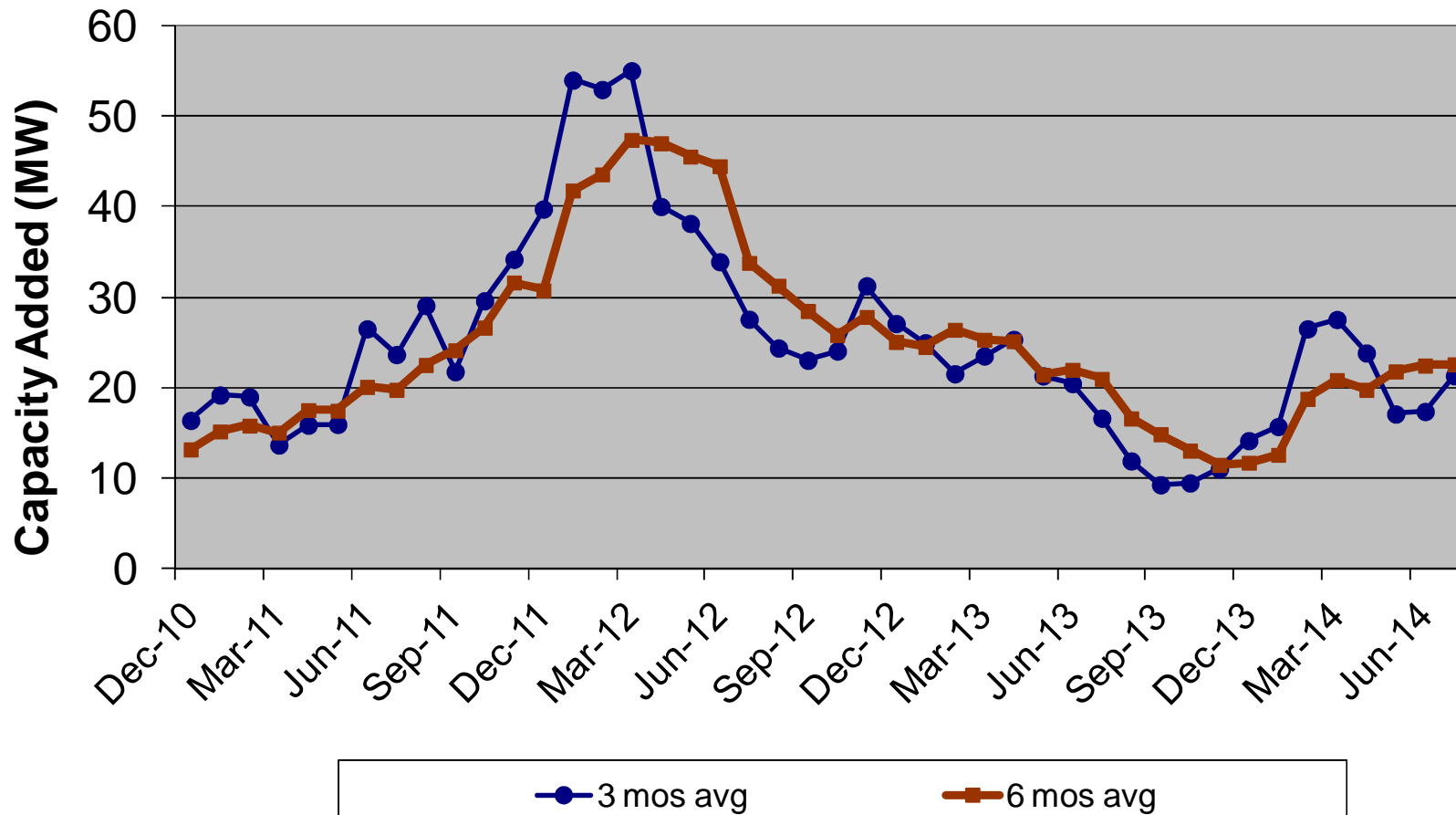
Residential Behind the Meter Installed Projects As of 07/31/14				
TPO Code	Description	Project Qty	Total Capacity (KW dc)	Percent of Capacity
0	Did Not use TPO	3,410	31,199	21.2%
1	Used TPO	14,457	115,628	78.8%
	Totals	17,867	146,827	100%
Blank	Unknown	6,906	52,947	

Note 1: The above tables provide a summary of responses regarding the use of Third Party Ownership (TPO) as reported on the SRP Registration form by the registrant. The quantities for the projects that are listed as "Unknown" are provided as a reference but are not included in the Totals or the Percent of Capacity calculation.



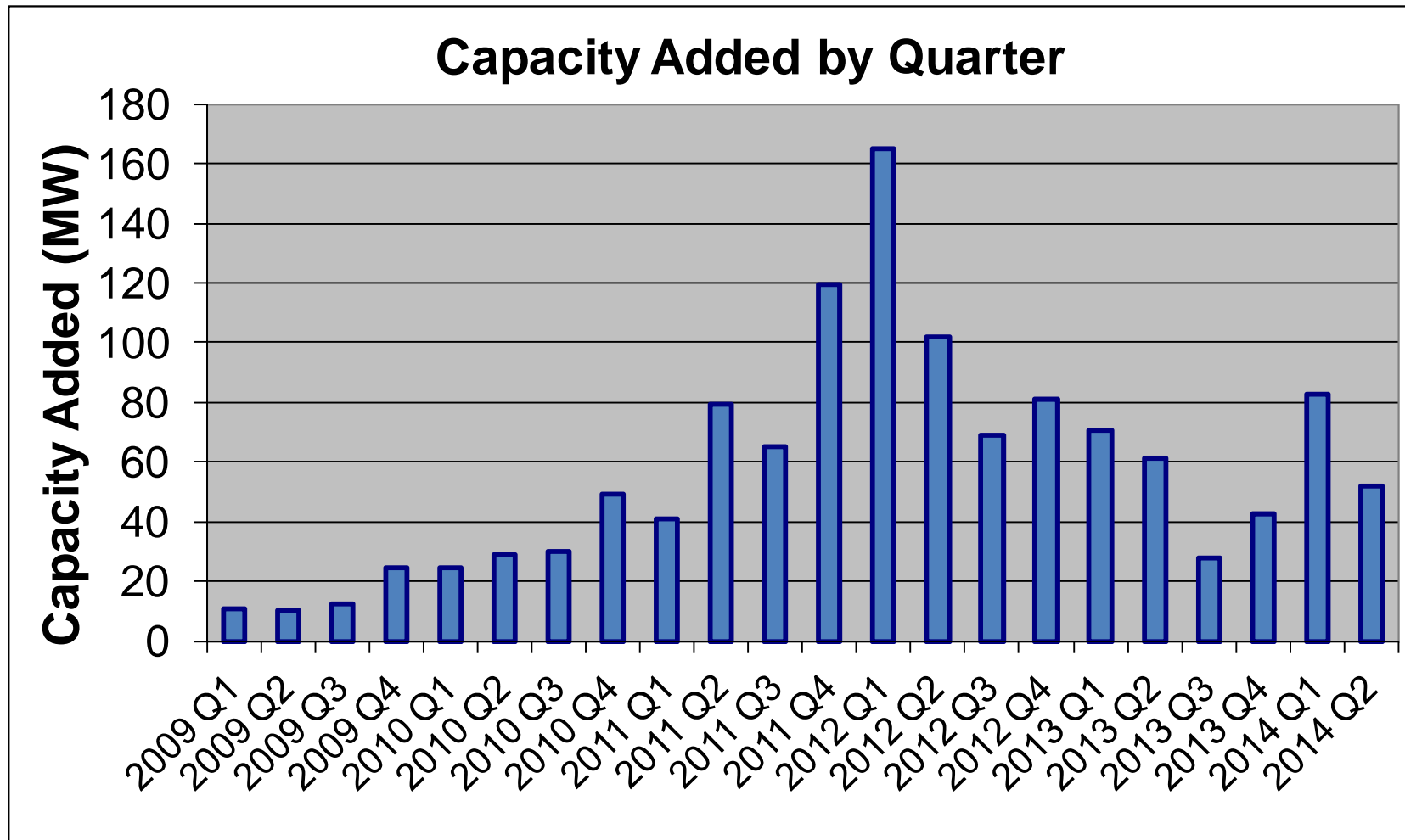
Solar Installed Capacity All Projects

3 & 6 Month Moving Average of Capacity Added



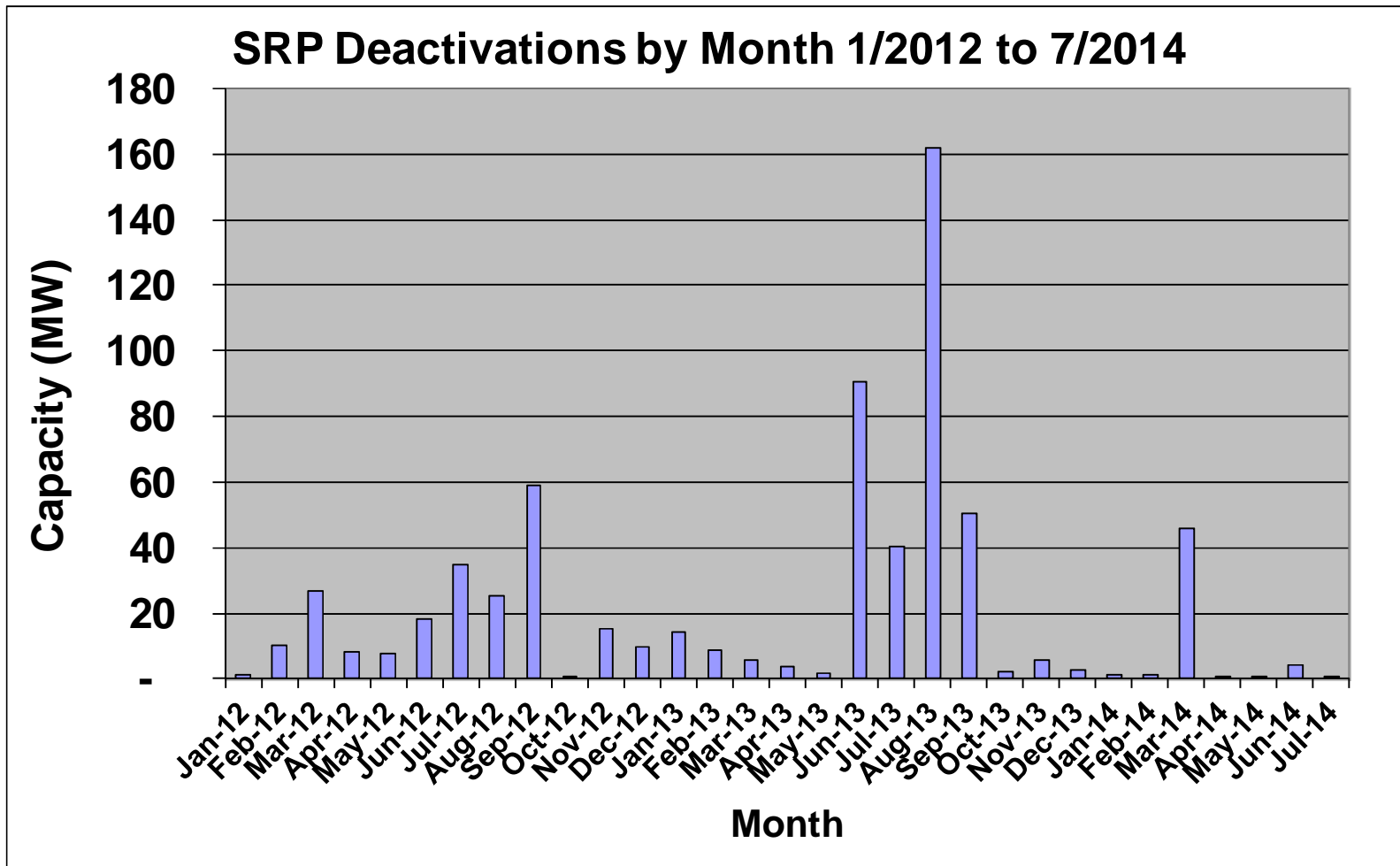


Solar Installed Capacity Added By Quarter





SRP Deactivations by Month





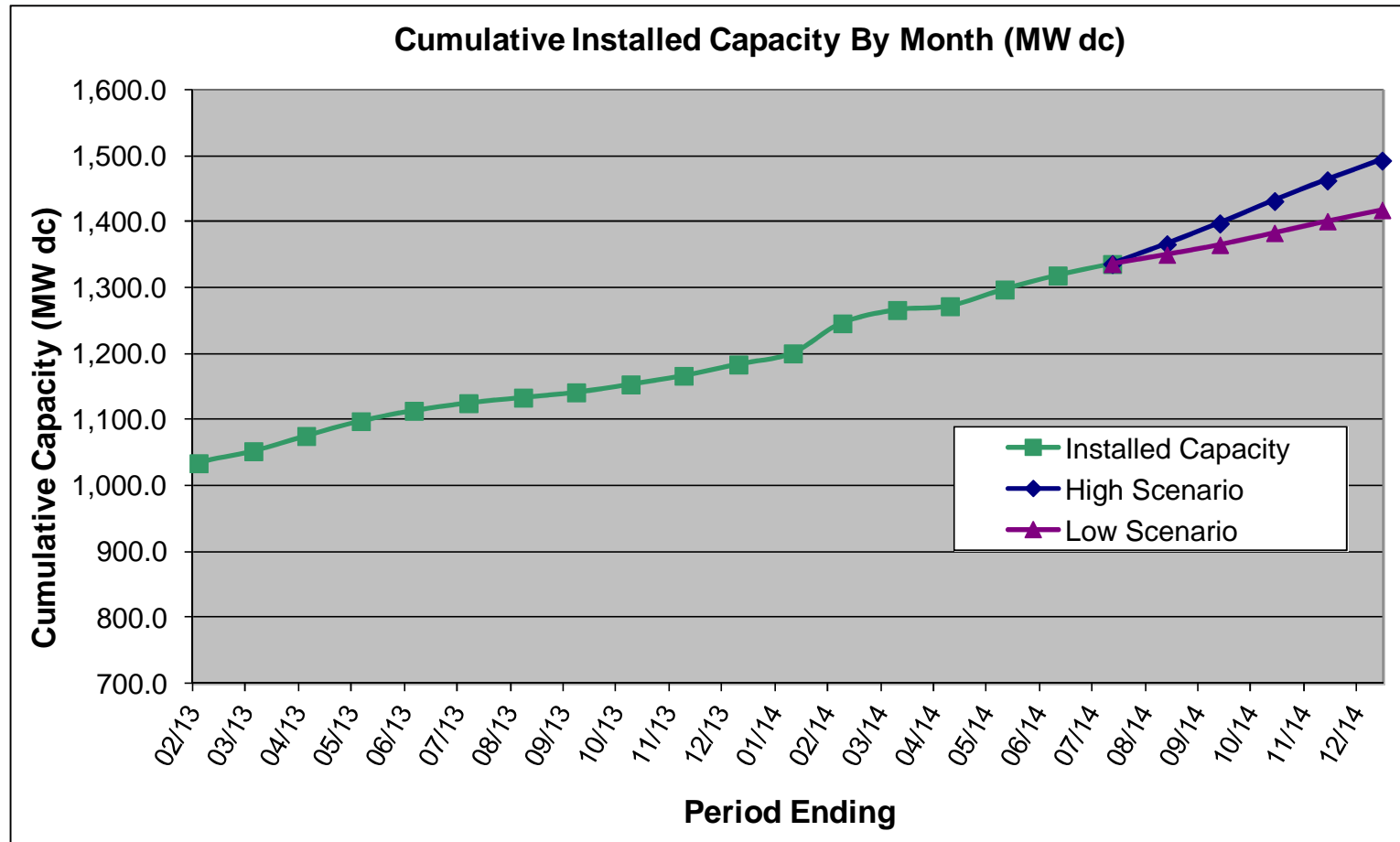
SRP Deactivations by Month

SRP Deactivations by Month as of 7/31/14

Month End	Project Qty	Capacity (kW)
Jan-13	115	14,110
Feb-13	120	8,675
Mar-13	137	5,550
Apr-13	69	3,930
May-13	105	1,532
Jun-13	92	90,673
Jul-13	94	40,494
Aug-13	128	162,138
Sep-13	78	50,646
Oct-13	102	2,236
Nov-13	125	5,537
Dec-13	128	2,728
Jan-14	120	1,008
Feb-14	97	1,136
Mar-14	106	46,159
Apr-14	113	912
May-14	99	780
Jun-14	76	4,030
Jul-14	78	778
Totals	1,904	442,272



2014 Installed Capacity Low and High Scenarios



Low Scenario 1,419 MW, High Scenario 1,494 MW

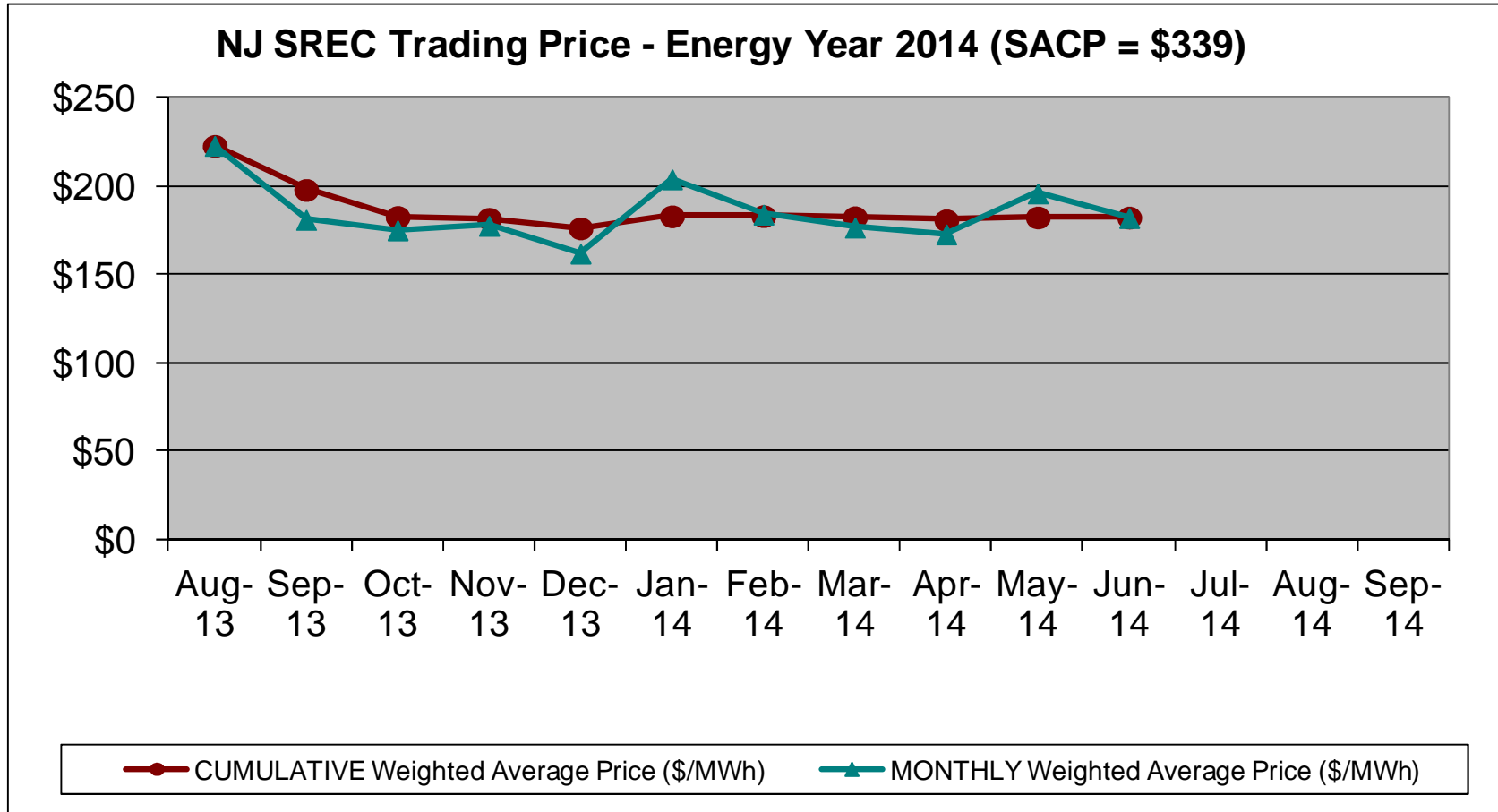


Current SREC Trading Statistics Energy Year 2014

EY 2014 SACP= \$339			SREC Quantity		Monthly		Cumulative	
Month	Year	Active kW DC	Issued in Month	Traded in Month	High (\$/MWh)	Low (\$/MWh)	# of SRECs Traded	Weighted Avg Price (\$/MWh)
June	2014	1,272,956	164,586	366,414	\$ 510	\$ 63	1,569,758	\$182.55
May	2014	1,253,674	158,618	127,996	\$ 620	\$ 70	1,203,344	\$182.62
Apr	2014	1,244,236	116,395	188,295	\$ 590	\$ 60	1,075,348	\$181.01
Mar	2014	1,231,712	63,782	94,457	\$ 524	\$ 70	887,053	\$182.69
Feb	2014	1,192,226	55,162	99,400	\$ 524	\$ 70	792,596	\$183.39
Jan	2014	1,179,285	52,207	170,466	\$ 610	\$ 70	693,196	\$183.26
Dec	2013	1,132,187	103,455	143,767	\$ 590	\$ 40	522,730	\$176.45
Nov	2013	1,118,635	91,969	77,064	\$ 510	\$ 70	378,963	\$181.86
Oct	2013	1,113,136	132,960	201,965	\$ 641	\$ 50	301,899	\$182.89
Sept	2013	1,102,926	126,470	59,396	\$ 545	\$ 50	99,934	\$198.19
Aug	2013	1,096,450	121,102	36,469	\$ 545	\$ 50	40,538	\$223.03
July	2013	1,082,508	120,692	4,069	Due to low trade volume, the July trades are reported with the pricing data for August.			
	Total		1,307,398	1,569,758				



Current SREC Trading Statistics Energy Year 2014





For More Information

Subscribe to the Renewable Energy Committee Notification list

<http://www.njcleanenergy.com/RElist>

New Jersey Clean Energy Program Renewable Energy Reports
Installation Summary by Technology

<http://www.njcleanenergy.com/projectreports>

Program Status Reports

<http://www.njcleanenergy.com/statusreports>

NJ SREC Trading Statistics for each Energy Year

<http://www.njcleanenergy.com/srecpricing>