

Solar 4 All Monthly Activity Report - June 2015

Site	Property Owner	Cost per Project (\$k)	NPV of 20 Year Lease Cost (\$k)	EPC Contractor	Site Location Address
Segment 1a					
Linden	PSE&G		N/A	ASP	South Wood Avenue, Linden, NJ 07036
Yardville	PSE&G		N/A	ACE	Broad Street, Hamilton, NJ 08611
Silver Lake	PSE&G		N/A	JFC	410 Silver Lake Avenue, Edison, NJ 08817
Trenton	PSE&G		N/A	SunEdison	500-520 Brunswick Avenue, Trenton, NJ 08638
Central HQ	PSE&G		N/A	Solis (Solyndra)	472 Weston Canal Road, Franklin, NJ 08873
Edison Training	PSE&G		N/A	Henkle & McCoy	234 Pierson Avenue, Edison, NJ 08837
Thorofare	PSE&G		N/A	SunEdison	Jessup Road, Thorofare, NJ 08086
Hackensack	PSE&G		N/A	JFC	194-210 South River Street, Hackensack NJ 07601
Metro/Clifton	PSE&G		N/A	Gloria Solar	150 Circle Ave, Clifton, NJ 07011
S. DivHQ Moorestown	PSE&G		N/A	Vanguard	360 New Albany Road, Moorestown, NJ
Segment 1b					
CPP Bayonne	CenterPoint Properties		\$1,402	ASP	30-100 Pulaski Street, Bayonne, NJ 07002
Matrix - Stults Rd	Matrix Development Group		\$2,228	Pro-Tech	45 Stults Rd, South Brunswick, NJ 08810
Rider	Rider University		\$642	Alteris	2083 Lawrenceville Road, Lawrenceville, NJ 08648
NJMC / Kearny Landfill	NJ Meadowland Commission		\$2,561	Sundurance	932 Bellville Turnpike, Kearny, Hudson County NJ 07032
Mill Creek	Judith Tucci		\$3,189	Juwi	600 Irick Road, Westampton, NJ 08060
Food Bank	Community Food Bank of NJ		\$772	Mercury	31 Evans Terminal, Hillside, NJ 07250
Raritan Center	Summit Associates Inc.		\$1,729	ASP	45 Fernwood Avenue and 110 Fieldcrest Avenue, Edison, NJ 08818
BlackRock-Matrix	Granite South Brunswick, LLC		\$1,800	Pro-Tech	140 Docks Corner Road, South Brunswick, NJ 08810
Segment 1c					
Matrix Bldg A & B	Matrix Development		\$2,191	enXco	1000 & 1050 Amboy Ave, Perth Amboy, NJ 08861
Barringer	Newark Public Schools		\$635	Mercury	90 Parker St, Newark, NJ 07104
Park	Newark Public Schools		\$482	Mercury	120 Manchester Place, Newark, NJ 07104-1704
Camden (NWK)	Newark Public Schools		\$971	ALM	281 & 321 Camden Street Newark, New Jersey 07103
New Central HS	Newark Public Schools		\$495	LB Electric	246 18th Ave, Newark, NJ 07108
Segment 2					
Pole-Attached	PSE&G		N/A	Riggs-Distler	Various

Notes:

"Cost per Project" corresponds to projects that have been placed in service.

"NPV of 20 Year Lease Cost" is derived using an annual discount rate of 5.07%

Regarding Segment 2 (Pole-attached): Riggs Distler is the installation contractor, not an EPC contractor

"Cost per Project" includes AFUDC

Solar 4 All Monthly Activity Report - June 2015

Site	Owner location	Type of customer	Status of the installation	Capacity of Project (MW-DC)
Segment 1a				
Linden	80 Park Plaza, Newark, NJ 07102	Utility	Commercial Operation	3.20
Yardville	80 Park Plaza, Newark, NJ 07102	Utility	Commercial Operation	4.30
Silver Lake	80 Park Plaza, Newark, NJ 07102	Utility	Commercial Operation	2.02
Trenton	80 Park Plaza, Newark, NJ 07102	Utility	Commercial Operation	1.26
Central HQ	80 Park Plaza, Newark, NJ 07102	Utility	Commercial Operation	0.92
Edison Training	80 Park Plaza, Newark, NJ 07102	Utility	Commercial Operation	0.71
Thorofare	80 Park Plaza, Newark, NJ 07102	Utility	Commercial Operation	0.72
Hackensack	80 Park Plaza, Newark, NJ 07102	Utility	Commercial Operation	1.05
Metro/Clifton	80 Park Plaza, Newark, NJ 07102	Utility	Commercial Operation	0.73
S. DivHQ Moorestown	80 Park Plaza, Newark, NJ 07102	Utility	Commercial Operation	1.07
Segment 1b				
CPP Bayonne	1808 Swift Drive, Oak Brook, IL 60523-1501	Warehouse	Commercial Operation	1.75
Matrix - Stults Rd	Forsgate Drive CN 4000, Cranbury, NJ 08512	Warehouse	Commercial Operation	2.98
Rider	2083 Lawrenceville Road, Lawrenceville, NJ 08548	University	Commercial Operation	0.74
NJMC / Kearny Landfill	One DeKorte Park Plaza, Lyndhurst, NJ 07071	Landfill	Commercial Operation	3.00
Mill Creek	4 St. Albans Place, Haworth, NJ 07641	Private Landowner	Commercial Operation	3.82
Food Bank	31 Evans Terminal Rd, Hillside, New Jersey 07250	Warehouse	Commercial Operation	1.07
Raritan Center	Raritan Plaza I, Edison, NJ 08818	Warehouse	Commercial Operation	2.22
BlackRock-Matrix	BlackRock, 40 E. 52nd Street, New York, NY 10022	Warehouse	Commercial Operation	2.97
Segment 1c				
Matrix Bldg A & B	Forsgate Drive CN 4000, Cranbury, NJ 08512	Warehouse	Commercial Operation	2.86
Barringer	Newark Public Schools, 2 Cedar Street, Newark NJ 07102-3051	Public Schools	Commercial Operation	0.65
Park	Newark Public Schools, 2 Cedar Street, Newark NJ 07102-3051	Public Schools	Commercial Operation	0.51
Camden (NWK)	Newark Public Schools, 2 Cedar Street, Newark NJ 07102-3051	Public Schools	Commercial Operation	0.91
New Central HS	Newark Public Schools, 2 Cedar Street, Newark NJ 07102-3051	Public Schools	Commercial Operation	0.50
Segment 2				
Pole-Attached	80 Park Plaza, Newark, NJ 07102	Utility	Comm Op / Ongoing Construc	38.52

Solar 4 All Monthly Activity Report - June 2015

Site	Equipment installed (Inverters; Panels)
Segment 1a	
Linden	Six Sunny Central SC500-HE-US inverters; 7,766 Suntech STP280-24/Vd, 3,718 STP275-24/Vd panels
Yardville	Eight Advanced Energy Solaron 3159500-0001A2 inverters, one Solaron 250 inverters; 5,640 Suntech STP270-24/VD, 4,368 STP275-24/VD, 1,512 STP280-24/VD panels
Silver Lake	Three SMA Sunny Central SC 500U, one SC 250U inverters; 3,514 Sharp ND-224UC1, 5,236 ND-U235F1
Trenton	Three Satcon PowerGate Plus PVS-500 inverters; 5,496 Yingli Solar YL230b-29b panels
Central HQ	One Satcon PowerGate Plus PVS-135, one PVS-250, one PVS-375 inverters; 4,180 Solyndra SL-001-182U, 648 Solar World SW240MONO panels
Edison Training	One Satcon PowerGate Plus PVS-500, one PVS-135 inverters; 3,164 Gloria Solar GSM6-225D-E1 panels
Thorofare	One Advanced Energy Solaron-500kW, one Solaron-250kW inverters; 2,618 SunTech STP275-24Vd panels
Hackensack	Two Advanced Energy Solaron-500kW, 4,472 MX Solar MX-60-235 panels
Metro/Clifton	Four Satcon Powergate Plus PVS-75, two PVS-135 inverters; 3,122 Gloria Solar GSM6-235D-E1 panels
S. DivHQ Moorestown	Three Advanced Energy PVP 260 Inverters; one PVP 100 and one PVP 50 Inverter. 4,563 MX60-235 panels
Segment 1b	
CPP Bayonne	Three SMA SC500U inverters; 7,938 Trina Solar TSM-220PA05 panels
Matrix - Stults Rd	Five Solaron 3159500-1001AD inverters; 12,684 Kyocera K0235GX-LPB panels
Rider	Two AEI inverters; 2,640 Suntech STP-280 panels
NJMC / Kearny Landfill	Seven Advanced Energy Solaron inverters 2x500kW, 3x333kW, 2x250kW; 12,506 Kyocera KD240GX-LFB panels
Mill Creek	Seven SMA America SC500U inverters; 29,400 Solar Frontier SF-130-L panels
Food Bank	Two Advanced Energy Solaron 500kW inverters; 4,667 Trina Solar TSM-230PA05 panels
Raritan Center	Four SMA Sunny Central 600US, One SMA SB8000US inverters; 7,098 Hyundai HIS-M230SG, 2,604 HIS-M227SG panels
BlackRock-Matrix	Five AE Solaron 3159000-1001AJ inverters; 12,376 Upsolar UP-M240P panels
Segment 1c	
Matrix Bldg A & B	Five SMA SC500U inverters; 10,395 Suntech STP275-24VD panels
Barringer	Two Satcon PowerGate Plus PVS-250, one PVS-135 inverters; 2,310 Suntech STP280-24VB-1 panels
Park	One Satcon PowerGate Plus PVS-375, one PVS-100, one PVS-75 inverters; 1,440 Sunpower PL-SUN-SPR-305-U, 264 Suntech STP270-24/VB-1 panels
Camden (NWK)	One Solaron 3159000-1000 A1, one Solaron 3159000-1000 A1; 3,264 ET Solar ET-P672280 panels
New Central HS	Two Satcon PowerGate Plus PVS-100, three Satcon Solstice SDMSO100480-LNIU inverters; 1,857 Suntech STP270-24/VB-1 panels
Segment 2	
Pole-Attached	Suntech STP200-18/UB-1, STP205-18/UD, STP210-18/UB-1, STP215-20/WD, STP220-20/WD, STP225-20/WD, Trina Solar TSM-220PA05, TSM-225PA05, TSM-235PA05, TSM-240PA05

Solar 4 All Monthly Activity Report - June 2015

June 2015 Monthly Update

Segment	Energy Produced (MWh AC)	Net Energy Sales (\$)	SREC's Sold	SREC Revenue (\$)	Capacity Sold (MW-days)	Net Capacity Sales (\$)	Business Interruption Insurance Recovery (\$)	Investment (\$)	Program Expenses (\$)	Projects Completed / Seg 2 Panels Installed	MW Installed	Pole-attached Units Communicating
Segment 1a	1,871	\$63,784	4,303	\$1,022,780	147.0	\$24,617	\$0	\$11,850	\$40,438	0	0.0	
Segment 1b	2,366	\$80,667	5,583	\$1,327,023	177.0	\$29,240	\$0	\$2,465	\$225,751	0	0.0	
Segment 1c	556	\$18,957	1,324	\$314,702	54.0	\$9,043	\$0	\$0	\$29,221	0	0.0	
Segment 2	3,581	\$122,123	10,561	\$2,510,244	333.0	\$54,028	\$0	\$33,243	\$152,993	0	0.00	165,104
Program Total	8,374	\$285,531	21,771	\$5,174,749	711.0	\$116,928	\$0	\$47,558	\$448,403	-	-	

Solar 4 All Year-to-Date Activity Report

Year-to-Date Update through June 2015

Segment	Energy Produced (MWh AC)	Net Energy Sales (\$)	SREC's Sold	SREC Revenue (\$)	Capacity Sold (MW-days)	Net Capacity Sales (\$)	Business Interruption Insurance Recovery (\$)	Investment (\$)	Program Expenses (\$)	Projects Completed / Seg 2 Panels Installed	MW Installed
Segment 1a	9,375	\$368,367	6,810	\$1,551,782	886.9	\$149,344	\$0	\$75,235	\$271,541	0	0.0
Segment 1b	11,894	\$488,916	8,665	\$1,977,356	1,067.9	\$144,590	\$0	\$2,711	\$864,926	0	0.0
Segment 1c	2,906	\$111,009	2,042	\$466,207	325.8	\$56,742	\$0	\$0	\$338,484	0	0.0
Segment 2	20,886	\$903,713	16,797	\$3,826,102	1,994.0	\$402,349	\$0	\$775,680	\$1,377,042	37	0.01
YTD Program Total	45,062	\$1,872,004	34,314	\$7,821,447	4,274.6	\$753,025	\$0	\$853,626	\$2,851,994		0.0

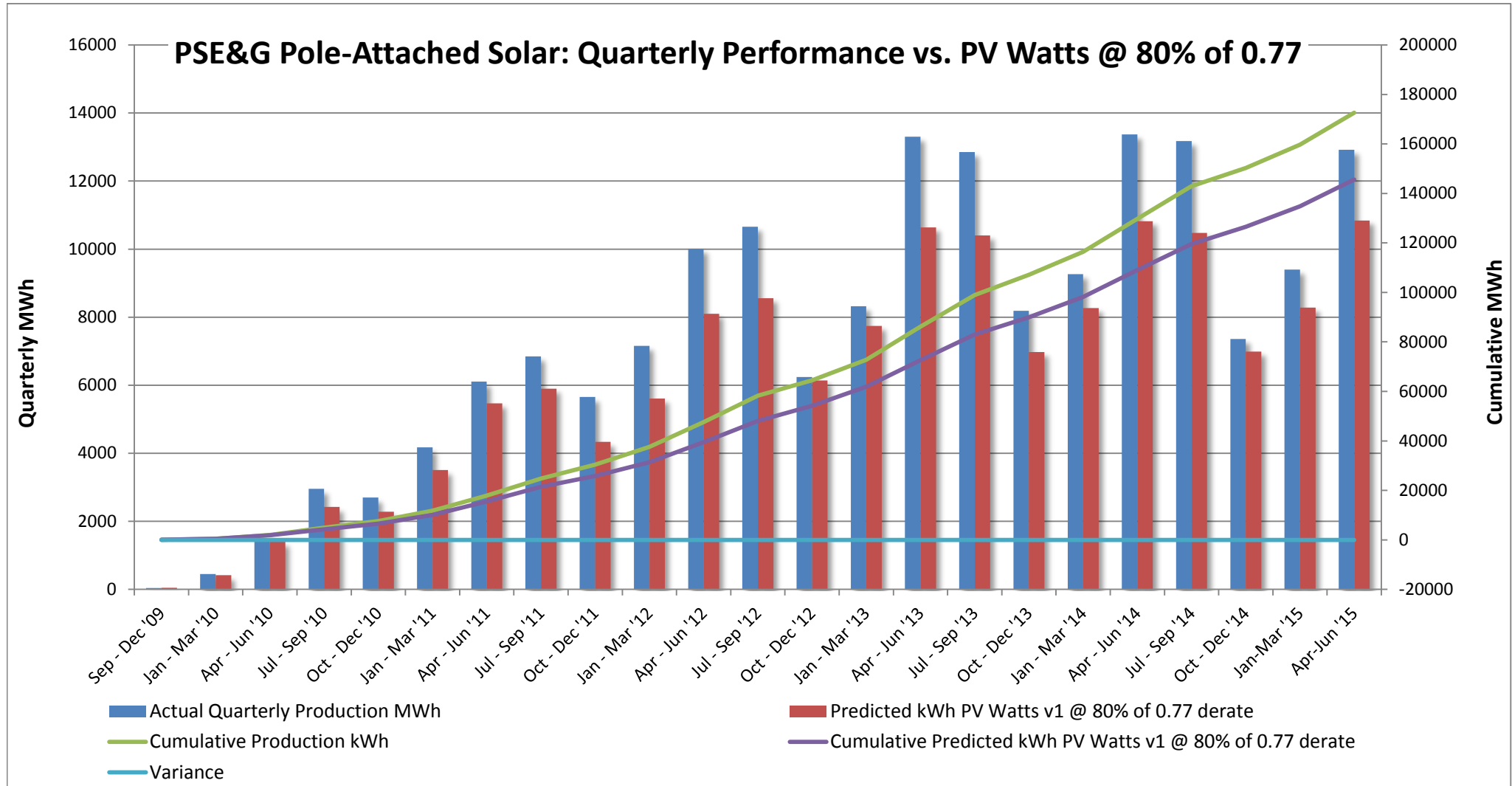
Solar 4 All Program-to-Date Activity Report

Program-to-Date through June 2015

Segment	Energy Produced (MWh AC)	Net Energy Sales (\$)	SREC's Sold	SREC Revenue (\$)	Capacity Sold (MW-days)	Net Capacity Sales (\$)	Business Interruption Insurance Recovery (\$)	Investment (\$)	Program Expenses (\$)	Projects Completed / Seg 2 Panels Installed	MW Installed
Segment 1a	76,620	\$3,676,933	73,235	\$13,879,087	6,647.9	\$810,939	\$320,277	\$90,025,014	\$5,416,354	10	16.0
Segment 1b	84,897	\$3,986,494	79,887	\$12,896,708	6,492.0	\$490,259	\$193,749	\$75,885,552	\$8,180,254	8	18.6
Segment 1c	27,425	\$1,330,537	26,530	\$5,091,691	2,683.8	\$326,176	\$0	\$30,297,014	\$3,354,361	6	5.4
Segment 2	141,623	\$6,907,191	152,528	\$30,021,097	13,880.3	\$1,832,058	\$0	\$272,517,545	\$11,770,102	174,621	38.5
Program-to-date Total	330,565	\$15,901,156	332,180	\$61,888,584	29,704.0	\$3,459,432	\$514,026	\$468,725,125	\$28,721,072		78.5

Notes:

- "SREC's Sold" and "SREC Revenue" includes vintage year 2011 through 2014 SRECs
- "Net Energy Sales" and "Net Capacity Sales" are tied to calendar month sales reported. These values may not tie to the amounts recorded for financial reporting due to timing of PJM invoices. Net Energy Sales for monthly, YTD, and PTD figures include South Jersey Energy Sales.
- Monthly "Pole-attached Units Installed" & "Pole-attached MW Installed" are preliminary estimates and subject to change. Adjustments to prior months will be reflected in YTD values. Capacity specified in certain previously filed capacity reports represented gross installed capacity. The values shown in the table above account for net installed capacity (total installs minus total removals).
- "Pole Attached Units Communicating" represents the *average, daily* number of panels that communicated during the month.
- The columns "Energy Produced" and "SRECs Sold" do not sync because of the timing of SREC auctions, through which SRECs are sold.
- Business interruption insurance recovery received for lost energy sales and SREC sales due to Superstorm Sandy



Seg1 (Plants):

- Cloudy conditions in June contributed to generation slightly below plan

Seg2 (Pole Attached Solar):

- Development of communications network continues.
- Ongoing maintenance of existing installations continues.

PSE&G Pole-Attached -- Summary by Municipality -- June 2015		
Municipality	Total Installed	Total kWdc
Allentown Boro	49	10.52
Audubon Boro	478	101.75
Audubon Park Boro	41	8.23
Barrington Boro	343	72.11
Bayonne City	1,665	378.93
Belleville Twp	838	195.45
Bellmawr Boro	1000	214.5
Bergenfield Boro	434	97.91
Berkeley Heights Twp	5	1.2
Beverly City	264	55.58
Bloomfield Twp	1,053	248.65
Bogota Boro	203	47.81
Bordentown City	69	14.73
Bordentown Twp	814	172.13
Bound Brook Boro	402	91.99
Branchburg Twp	23	2.16
Bridgewater Twp	1,673	374.24
Brooklawn Boro	224	47.22
Burlington City	1,228	256.98
Burlington Twp	1,217	253.67
Caldwell Boro	200	47.27
Camden City	5,527	1,185.77
Carlstadt Boro	666	155.86
Carteret Boro	1,561	334.17
Cedar Grove Twp	570	133.76
Cherry Hill Twp	3,073	653.84
Chesterfield Twp	399	86.07
Cinnaminson Twp	1,214	254.22
Clark Twp	598	133.45
Cliffside Park Boro	285	67.43
Clifton City	3,048	711.58
Collingswood Boro	695	146.74
Cranbury Twp	291	63.5
Cranford Twp	693	155.3
Cresskill Boro	2	0.44
Delanco Twp	300	62.16
Delran Twp	579	119.76
Deptford Twp	1,681	364.57
Dumont Boro	427	94.68
Dunellen Boro	292	65.54
East Amwell Twp	2	0.41
East Brunswick Twp	1,700	369.55
East Newark Boro	36	8.01
East Orange City	1,300	306.62
East Rutherford Boro	438	102.31
Eastampton Twp	312	65.02
Edgewater Boro	110	25.67
Edgewater Park Twp	522	107.01
Edison Twp	4,587	996.29
Elizabeth City	3,209	699.81
Elizabeth City	251	55.36

*Latest installation date 6/30/15

*Installs pending municipal data updates
not included in total

Count of Panels by Municipality
*Net of removals

Panel Report
Page 7 of 16

PSE&G Pole-Attached -- Summary by Municipality -- June 2015		
Municipality	Total Installed	Total kWdc
Elmwood Park Boro	737	169.2
Emerson Boro	272	60.7
Englewood City	794	183.48
Englewood Cliffs Boro	259	61.37
Essex Fells Twp	59	13.94
Evesham Twp	757	160.7
Ewing Twp	2,369	509.21
Fair Lawn Boro	1,015	225.95
Fairfield Twp Ess	1,012	236.65
Fairview Boro	248	58.12
Fanwood Boro	249	57.08
Fieldsboro Boro	64	14.17
Florence Twp	727	148.87
Fort Lee Boro	654	153.56
Franklin Twp Som	2,707	585.49
Franklin Twp Som	81	18.38
Garfield City	585	136.31
Garwood Boro	238	54.04
Glen Ridge Boro	16	3.84
Glen Rock Boro	144	32.46
Gloucester City	794	169.58
Gloucester Twp	1,694	364.88
Green Brook Twp	293	66.3
Guttenberg Town	24	5.28
Hackensack City	1,413	327.57
Haddon Heights Boro	351	77.55
Haddon Twp	928	198.74
Haddonfield Boro	159	35.83
Hainesport Twp	438	91.51
Haledon Boro	118	26.55
Hamilton Twp Mer	6,412	1,378.19
Harrison Town	265	60.08
Hasbrouck Heights	360	84.34
Haworth Boro	35	8.04
Hawthorne Boro	423	93.34
Highland Park Boro	475	105.57
Hillsborough Twp	1,634	359.49
Hillsborough Twp	1	0.21
Hillsdale Boro	17	4
Hillside Twp	665	146.25
Hillside Twp	3	0.62
Hi-Nella Boro	53	11.35
Hoboken City	277	65.4
Hohokus Boro	34	7.56
Hopewell Boro	72	16.88
Hopewell Twp Mer	464	102.65
Irvington Town	1,081	240.67
Jersey City	3,989	907.23
Kearny Town	0	0
Kearny Town	1,263	283.67
Kenilworth Boro	318	70.77

*Latest installation date 6/30/15

*Installs pending municipal data updates
not included in total

Count of Panels by Municipality

*Net of removals

Panel Report

Page 8 of 16

PSE&G Pole-Attached -- Summary by Municipality -- June 2015		
Municipality	Total Installed	Total kWdc
Lawnside Boro	259	55.88
Lawrence Twp Mer	1,429	308.51
Leonia Boro	181	42.4
Lincoln Park Boro	5	1.15
Linden City	2,618	556.52
Little Falls Twp	419	97.75
Little Ferry Boro	442	102.16
Livingston Twp	439	103.93
Lodi Boro	638	148.04
Lumberton Twp	429	89.45
Lyndhurst Twp	875	203.53
Magnolia Boro	399	89.09
Mansfield Twp Bur	541	111.52
Manville Boro	593	134.04
Maple Shade Twp	1,201	252.27
Maplewood Twp	354	79.56
Maywood Boro	211	49.78
Medford Lakes Boro	29	6.11
Medford Twp	561	116.87
Merchantville Boro	197	42.23
Metuchen Boro	526	116.24
Middlesex Boro	921	205.71
Midland Park Boro	79	18.63
Millburn Twp	1	0.24
Millstone Boro	34	7.46
Milltown Boro	5	1.15
Monroe Twp Mid	3	0.63
Montclair Twp	725	172.89
Montgomery Twp	19	4.25
Montgomery Twp	736	161.94
Moonachie Boro	362	82.56
Moorestown Twp	1,034	219.2
Mount Ephraim Boro	343	72.84
Mount Holly Twp	544	114.8
Mount Laurel Twp	1,052	220.06
Mountainside Boro	302	69.46
National Park Boro	348	76.08
New Brunswick City	1,640	350.55
New Milford Boro	287	65.01
Newark City	7,569	1,696.92
North Arlington Boro	516	119.24
North Bergen Twp	1,250	292.14
North Brunswick Twp	1,743	378.63
North Caldwell Twp	176	40.67
North Haledon Boro	48	11.08
North Hanover Twp	0	0
North Plainfield Boro	572	128.78
Nutley Town	549	129.31
Oaklyn Boro	273	57.62
Old Tappan Boro	11	2.64
Oradell Boro	98	21.76

*Latest installation date 6/30/15

*Installs pending municipal data updates
not included in total

Count of Panels by Municipality

*Net of removals

Panel Report

Page 9 of 16

PSE&G Pole-Attached -- Summary by Municipality -- June 2015		
Municipality	Total Installed	Total kWdc
Orange City	573	135.89
Palisades Park Boro	412	97.18
Palmyra Boro	416	86.83
Paramus Boro	731	165.34
Park Ridge Boro	0	0
Passaic City	1,027	239.43
Paterson City	3,208	729.95
Paulsboro Boro	6	1.24
Pemberton Twp	108	22.16
Pennington Boro	81	18.86
Pennsauken Twp	3,348	701.51
Perth Amboy City	1,500	326.08
Piscataway Twp	2,563	553.28
Plainfield City	1,550	344.36
Plainsboro Twp	223	48.91
Princeton Boro	52	11.84
Princeton Twp	125	27.31
Prospect Park Boro	109	24.44
Rahway City	1,415	318.48
Raritan Boro	281	61.36
Ridgefield Boro	345	80.92
Ridgefield Park Village	379	89.77
Ridgewood Village	134	30.23
River Edge Boro	259	59.44
River Vale Twp	11	2.42
Riverside Twp	559	116.18
Riverton Boro	110	23.76
Rochelle Park Twp	257	58.85
Rocky Hill Boro	17	3.73
Roseland Boro	141	33.57
Roselle Boro	637	140.41
Roselle Park Boro	307	70.63
Runnemede Boro	544	117.93
Rutherford Boro	217	48.24
Saddle Brook Twp	7	1.63
Saddle Brook Twp	305	69.52
Saddle River Boro	9	1.92
Scotch Plains Twp	652	147.98
Secaucus Town	993	231.32
Somerdale Boro	382	82.56
Somerville Boro	716	156.45
South Bound Brook Boro	197	43.32
South Brunswick Twp	1,321	286.94
South Brunswick Twp	449	96.51
South Hackensack Twp	213	49.6
South Orange Village Twp	96	22.77
South Plainfield Boro	2,165	476.78
Southampton Twp	791	165.45
Springfield Twp Bur	465	96.89
Springfield Twp Uni	29	6.61
Tavistock Boro	1	0.22

*Latest installation date 6/30/15

*Installs pending municipal data updates
not included in total

Count of Panels by Municipality

*Net of removals

Panel Report

Page 10 of 16

PSE&G Pole-Attached -- Summary by Municipality -- June 2015		
Municipality	Total Installed	Total kWdc
Teaneck Twp	716	164.1
Tenafly Boro	306	69.88
Teterboro Boro	169	39.63
Totowa Boro	724	165.75
Trenton City	4,663	1015.91
Union City	25	5.8
Union Twp Uni	2,042	452.72
Upper Freehold Twp	76	16.26
Verona Twp	184	43.96
Voorhees Twp	307	66.94
Waldwick Boro	162	36.28
Wallington Boro	271	63.21
Wallington Boro	5	1.17
Warren Twp	51	10.86
Washington Twp Ber	86	19.39
Washington Twp Glo	36	7.78
Washington Twp Mer	351	74.82
Watchung Boro	327	72.79
Wayne Twp	1,299	297.34
Weehawken Twp	3	0.72
West Caldwell Twp	512	120.98
West Deptford Twp	1	0.2
West Deptford Twp	1,669	359.4
West New York Town	31	7.02
West Orange Twp	1,035	241.44
West Paterson Boro	302	69.6
West Windsor Twp	665	145.39
Westampton Twp	430	90.09
Westfield Town	1,136	258.17
Westville Boro	500	106.14
Westwood Boro	219	48.52
Willingboro Twp	652	132.66
Winfield Twp	15	3.07
Woodbridge Twp	5,669	1,221.39
Woodbury City	919	200.05
Woodbury Heights Boro	271	58.84
Woodcliff Lake Boro	67	15.78
Woodlynne Boro	146	30.74
Wood-Ridge Boro	333	78.5
Wyckoff Twp	49	11.2
Total	174,077	38,392.32

*Latest installation date 6/30/15

*Installs pending municipal data updates
not included in total

Count of Panels by Municipality

*Net of removals

Panel Report
Page 11 of 16

PSE&G Pole-Attached -- Count of Aggregators by Municipality -- June 2015

Municipality	Count of Aggregators Installed through June 2015
Allentown Boro	3
Audubon Boro	7
Barrington Boro	7
Bayonne City	23
Belleville Twp	13
Bellmawr Boro	19
Bergenfield Boro	6
Beverly City	3
Bloomfield Twp	17
Bogota Boro	3
Bordentown City	2
Bordentown Twp	14
Bound Brook Boro	6
Branchburg Twp	1
Bridgewater Twp	44
Brooklawn Boro	4
Burlington City	17
Burlington Twp	17
Caldwell Boro	3
Camden City	66
Carlstadt Boro	12
Carteret Boro	20
Cedar Grove Twp	8
Cherry Hill Twp	68
Chesterfield Twp	16
Cinnaminson Twp	19
Clark Twp	11
Cliffside Park Boro	4
Clifton City	42
Collingswood Boro	10
Cranbury Twp	7
Cranford Twp	11
Delanco Twp	3
Delran Twp	10
Deptford Twp	32
Dumont Twp	6
Dunellen Boro	4
East Brunswick Twp	34
East Newark Boro	1
East Orange City	17
East Rutherford Twp	6
Eastampton Twp	6
Edgewater Boro	6
Edgewater Park Twp	7
Edison Twp	79
Elizabeth City	44
Elmwood Park Boro	11
Emerson Boro	7
Englewood City	17
Englewood Cliffs Boro	5

PSE&G Pole-Attached -- Count of Aggregators by Municipality -- June 2015

Municipality	Count of Aggregators Installed through June 2015
Essex Fells Twp	2
Evesham Twp	14
Ewing Twp	35
Fair Lawn Boro	17
Fairfield Twp Ess	18
Fairview Boro	5
Fanwood Boro	5
Fieldsboro Boro	1
Florence Twp	12
Fort Lee Boro	12
Franklin Twp Som	63
Garfield City	10
Garwood Boro	3
Glen Rock Boro	7
Gloucester City	10
Gloucester Twp	22
Green Brook Twp	6
Guttenberg Town	1
Hackensack City	24
Haddon Heights Boro	4
Haddon Twp	13
Haddonfield Boro	9
Hainesport Twp	3
Haledon Boro	1
Hamilton Twp Mer	88
Harrison Town	6
Hasbrouck Heights	4
Haworth Boro	1
Hawthorne Boro	10
Highland Park Boro	9
Hillsborough Twp	37
Hillsdale Boro	2
Hillside Twp	11
Hi-Nella Boro	1
Hoboken City	6
Hohokus Boro	3
Hopewell Boro	1
Hopewell Twp Mer	28
Irvington Town	17
Jersey City	61
Kearny Town	18
Kenilworth Boro	5
Lawnside Boro	4
Lawrence Twp Mer	34
Leonia Twp	2
Linden City	35
Little Falls Twp	10
Little Ferry Boro	8
Livingston Twp	24
Lodi Boro	11

PSE&G Pole-Attached -- Count of Aggregators by Municipality -- June 2015

Municipality	Count of Aggregators Installed through June 2015
Lumberton Twp	12
Lyndhurst Twp	12
Magnolia Boro	5
Mansfield Twp Bur	15
Manville Boro	9
Maple Shade Twp	13
Maplewood Twp	6
Maywood Boro	7
Medford Lakes Boro	3
Medford Twp	25
Merchantville Boro	1
Metuchen Boro	10
Middlesex Twp	9
Midland Park Boro	7
Millstone Boro	1
Montclair Twp	18
Montgomery Twp	34
Moonachie Boro	5
Moorestown Twp	20
Mount Ephraim Boro	4
Mount Holly Twp	9
Mount Laurel Twp	29
Mountainside Boro	8
National Park Boro	6
New Brunswick City	23
New Milford Boro	5
Newark City	111
North Arlington Boro	9
North Bergen Twp	23
North Brunswick Twp	24
North Caldwell Twp	9
North Haledon Boro	3
North Plainfield Boro	7
Nutley Town	9
Oaklyn Boro	4
Old Tappan Boro	1
Oradell Boro	3
Orange City	9
Palisades Park Boro	6
Palmyra Boro	7
Paramus Boro	23
Passaic City	17
Paterson City	48
Pemberton Twp	5
Pennington Boro	4
Pennsauken Twp	50
Perth Amboy City	26
Piscataway Twp	50
Plainfield City	26
Plainsboro Twp	9

PSE&G Pole-Attached -- Count of Aggregators by Municipality -- June 2015

Municipality	Count of Aggregators Installed through June 2015
Princeton Boro	7
Princeton Twp	16
Prospect Park Boro	1
Rahway City	17
Raritan Boro	5
Ridgefield Boro	4
Ridgefield Park Village	5
Ridgewood Village	9
River Edge Boro	5
River Vale Twp	1
Riverside Boro	5
Riverton Boro	3
Rochelle Park Twp	5
Rocky Hill Boro	4
Roseland Boro	10
Roselle Boro	11
Roselle Park Boro	5
Runnemede Boro	8
Rutherford Boro	8
Saddle Brook Twp	7
Scotch Plains Twp	14
Secaucus Town	18
Somerdale Boro	6
Somerville Boro	8
South Bound Brook Boro	2
South Brunswick Twp	46
South Hackensack Twp	2
South Orange Village Twp	5
South Plainfield Boro	42
Southampton Twp	23
Springfield Twp Bur	12
Teaneck Twp	17
Tenafly Boro	12
Teterboro Boro	3
Totowa Boro	12
Trenton City	55
Undefined Municipality	1
Union City	2
Union Twp Uni	30
Upper Freehold Twp	2
Verona Twp	3
Voorhees Twp	8
Waldwick Boro	10
Wallington Boro	2
Warren Twp	4
Washington Twp Ber	6
Washington Twp Glo	1
Washington Twp Mer	6
Watchung Boro	13
Wayne Twp	55

PSE&G Pole-Attached -- Count of Aggregators by Municipality -- June 2015

Municipality	Count of Aggregators Installed through June 2015
West Caldwell Twp	8
West Deptford Twp	28
West New York Town	3
West Orange Twp	27
West Paterson Boro	9
West Windsor Twp	23
Westampton Twp	10
Westfield Town	26
Westville Boro	5
Westwood Boro	5
Willingboro Twp	16
Woodbridge Twp	89
Woodbury City	13
Woodbury Heights Boro	3
Woodcliff Lakes Boro	4
Woodlynne Boro	2
Wood-Ridge Boro	4
Wyckoff Twp	5
<i>TOTAL</i>	3,146