

Solar 4 All Monthly Activity Report - August 2019

Site	Property Owner	Cost per Project (\$k)	NPV of 20 Year Lease Cost (\$k)	EPC Contractor	Site Location Address
Segment 1a					
Linden	PSE&G		N/A	ASP	South Wood Avenue, Linden, NJ 07036
Yardville	PSE&G		N/A	ACE	Broad Street, Hamilton, NJ 08611
Silver Lake	PSE&G		N/A	JFC	410 Silver Lake Avenue, Edison, NJ 08817
Trenton	PSE&G		N/A	SunEdison	500-520 Brunswick Avenue, Trenton, NJ 08638
Central HQ	PSE&G		N/A	Solis (Solyndra)	472 Weston Canal Road, Franklin, NJ 08873
Edison Training	PSE&G		N/A	Henkle & McCoy	234 Pierson Avenue, Edison, NJ 08837
Thorofare	PSE&G		N/A	SunEdison	Jessup Road, Thorofare, NJ 08086
Hackensack	PSE&G		N/A	JFC	194-210 South River Street, Hackensack NJ 07601
Metro/Clifton	PSE&G		N/A	Gloria Solar	150 Circle Ave, Clifton, NJ 07011
S. DivHQ Moorestown	PSE&G		N/A	Vanguard	360 New Albany Road, Moorestown, NJ
Segment 1b					
CPP Bayonne	CenterPoint Properties		\$1,402	ASP	30-100 Pulaski Street, Bayonne, NJ 07002
Matrix - Stults Rd	Matrix Development Group		\$2,228	Pro-Tech	45 Stults Rd, South Brunswick, NJ 08810
Rider	Rider University		\$642	Alteris	2083 Lawrenceville Road, Lawrenceville, NJ 08648
NJMC / Kearny Landfill	NJ Meadowland Commission		\$2,561	Sundurance	932 Bellville Turnpike, Kearny, Hudson County NJ 07032
Mill Creek	Judith Tucci		\$3,189	Juwi	600 Irick Road, Westampton, NJ 08060
Food Bank	Community Food Bank of NJ		\$772	Mercury	31 Evans Terminal, Hillside, NJ 07250
Raritan Center	Summit Associates Inc.		\$1,729	ASP	45 Fernwood Avenue and 110 Fieldcrest Avenue, Edison, NJ 08818
BlackRock-Matrix	Granite South Brunswick, LLC		\$1,800	Pro-Tech	140 Docks Corner Road, South Brunswick, NJ 08810
Segment 1c					
Matrix Bldg A & B	Matrix Development		\$2,191	enXco	1000 & 1050 Amboy Ave, Perth Amboy, NJ 08861
Barringer	Newark Public Schools		\$635	Mercury	90 Parker St, Newark, NJ 07104
Park	Newark Public Schools		\$482	Mercury	120 Manchester Place, Newark, NJ 07104-1704
Camden (NWK)	Newark Public Schools		\$971	ALM	281 & 321 Camden Street Newark, New Jersey 07103
New Central HS	Newark Public Schools		\$495	LB Electric	246 18th Ave, Newark, NJ 07108
Segment 2					
Pole-Attached	PSE&G	See p.4 of Activity Report	N/A	Riggs-Distler	Various

Notes:

"Cost per Project" corresponds to projects that have been placed in service.

"NPV of 20 Year Lease Cost" is derived using an annual discount rate of 5.07%

Regarding Segment 2 (Pole-attached): Riggs Distler is the installation contractor, not an EPC contractor

"Cost per Project" includes AFUDC

Solar 4 All Monthly Activity Report - August 2019

Site	Owner location	Type of customer	Status of the installation	Capacity of Project (MW-DC)
Segment 1a				
Linden	80 Park Plaza, Newark, NJ 07102	Utility	Commercial Operation	3.20
Yardville	80 Park Plaza, Newark, NJ 07102	Utility	Commercial Operation	4.30
Silver Lake	80 Park Plaza, Newark, NJ 07102	Utility	Commercial Operation	2.02
Trenton	80 Park Plaza, Newark, NJ 07102	Utility	Commercial Operation	1.26
Central HQ	80 Park Plaza, Newark, NJ 07102	Utility	Commercial Operation	0.92
Edison Training	80 Park Plaza, Newark, NJ 07102	Utility	Commercial Operation	0.71
Thorofare	80 Park Plaza, Newark, NJ 07102	Utility	Commercial Operation	0.72
Hackensack	80 Park Plaza, Newark, NJ 07102	Utility	Commercial Operation	1.05
Metro/Clifton	80 Park Plaza, Newark, NJ 07102	Utility	Commercial Operation	0.73
S. DivHQ Moorestown	80 Park Plaza, Newark, NJ 07102	Utility	Commercial Operation	1.07
Segment 1b				
CPP Bayonne	1808 Swift Drive, Oak Brook, IL 60523-1501	Warehouse	Commercial Operation	1.75
Matrix - Stults Rd	Forsgate Drive CN 4000, Cranbury, NJ 08512	Warehouse	Commercial Operation	2.98
Rider	2083 Lawrenceville Road, Lawrenceville, NJ 08548	University	Commercial Operation	0.74
NJMC / Kearny Landfill	One DeKorte Park Plaza, Lyndhurst, NJ 07071	Landfill	Commercial Operation	3.00
Mill Creek	4 St. Albans Place, Haworth, NJ 07641	Private Landowner	Commercial Operation	3.82
Food Bank	31 Evans Terminal Rd, Hillside, New Jersey 07250	Warehouse	Commercial Operation	1.07
Raritan Center	Raritan Plaza I, Edison, NJ 08818	Warehouse	Commercial Operation	2.22
BlackRock-Matrix	BlackRock, 40 E. 52nd Street, New York, NY 10022	Warehouse	Commercial Operation	2.97
Segment 1c				
Matrix Bldg A & B	Forsgate Drive CN 4000, Cranbury, NJ 08512	Warehouse	Commercial Operation	2.86
Barringer	Newark Public Schools, 2 Cedar Street, Newark NJ 07102-3051	Public Schools	Commercial Operation	0.65
Park	Newark Public Schools, 2 Cedar Street, Newark NJ 07102-3051	Public Schools	Commercial Operation	0.51
Camden (NWK)	Newark Public Schools, 2 Cedar Street, Newark NJ 07102-3051	Public Schools	Commercial Operation	0.91
New Central HS	Newark Public Schools, 2 Cedar Street, Newark NJ 07102-3051	Public Schools	Commercial Operation	0.50
Segment 2				
Pole-Attached	80 Park Plaza, Newark, NJ 07102	Utility	Commercial Operation	37.38

Solar 4 All Monthly Activity Report - August 2019

Site	Equipment installed (Inverters; Panels)
Segment 1a	
Linden	Six Sunny Central SC500-HE-US inverters; 7,766 Suntech STP280-24/Vd, 3,718 STP275-24/Vd panels
Yardville	Eight Advanced Energy Solaron 3159500-0001A2 inverters, one Solaron 250 inverters; 5,640 Suntech STP270-24/VD, 4,368 STP275-24/VD, 1,512 STP280-24/VD panels
Silver Lake	Three SMA Sunny Central SC 500U, one SC 250U inverters; 3,514 Sharp ND-224UC1, 5,236 ND-U235F1
Trenton	Three Satcon PowerGate Plus PVS-500 inverters; 5,496 Yingli Solar YL230b-29b panels
Central HQ	One Satcon PowerGate Plus PVS-135, one PVS-250, one PVS-375 inverters; 4,180 Solyndra SL-001-182U, 648 Solar World SW240MONO panels
Edison Training	One Satcon PowerGate Plus PVS-500, one PVS-135 inverters; 3,164 Gloria Solar GSM6-225D-E1 panels
Thorofare	One Advanced Energy Solaron-500kW, one Solaron-250kW inverters; 2,618 SunTech STP275-24Vd panels
Hackensack	Two Advanced Energy Solaron-500kW, 4,472 MX Solar MX-60-235 panels
Metro/Clifton	Four Satcon Powergate Plus PVS-75, two PVS-135 inverters; 3,122 Gloria Solar GSM6-235D-E1 panels
S. DivHQ Moorestown	Three Advanced Energy PVP 260 Inverters; one PVP 100 and one PVP 50 Inverter. 4,563 MX60-235 panels
Segment 1b	
CPP Bayonne	Three SMA SC500U inverters; 7,938 Trina Solar TSM-220PA05 panels
Matrix - Stults Rd	Five Solaron 3159500-1001AD inverters; 12,684 Kyocera K0235GX-LPB panels
Rider	Two AEI inverters; 2,640 Suntech STP-280 panels
NJMC / Kearny Landfill	Seven Advanced Energy Solaron inverters 2x500kW, 3x333kW, 2x250kW; 12,506 Kyocera KD240GX-LFB panels
Mill Creek	Seven SMA America SC500U inverters; 29,400 Solar Frontier SF-130-L panels
Food Bank	Two Advanced Energy Solaron 500kW inverters; 4,667 Trina Solar TSM-230PA05 panels
Raritan Center	Four SMA Sunny Central 600US, One SMA SB8000US inverters; 7,098 Hyundai HIS-M230SG, 2,604 HIS-M227SG panels
BlackRock-Matrix	Five AE Solaron 3159000-1001AJ inverters; 12,376 Upsolar UP-M240P panels
Segment 1c	
Matrix Bldg A & B	Five SMA SC500U inverters; 10,395 Suntech STP275-24VD panels
Barringer	Two Satcon PowerGate Plus PVS-250, one PVS-135 inverters; 2,310 Suntech STP280-24VB-1 panels
Park	One Satcon PowerGate Plus PVS-375, one PVS-100, one PVS-75 inverters; 1,440 Sunpower PL-SUN-SPR-305-U, 264 Suntech STP270-24/VB-1 panels
Camden (NWK)	One Solaron 3159000-1000 A1, one Solaron 3159000-1000 A1; 3,264 ET Solar ET-P672280 panels
New Central HS	Two Satcon PowerGate Plus PVS-100, three Satcon Solstice SDMSO100480-LNIU inverters; 1,857 Suntech STP270-24/VB-1 panels
Segment 2	
Pole-Attached	Suntech STP200-18/UB-1, STP205-18/UD, STP210-18/UB-1, STP215-20/WD, STP220-20/WD, STP225-20/WD, Trina Solar TSM-220PA05, TSM-225PA05, TSM-235PA05, TSM-240PA05

Solar 4 All Monthly Activity Report - August 2019

August 2019 Monthly Update												
Segment	Energy Produced (MWh AC)	Net Energy Sales (\$)	SREC's Sold	SREC Revenue (\$)	Capacity Sold (MW-days)	Net Capacity Sales (\$)	Business Interruption Insurance Recovery (\$)	Investment (\$)	Program Expenses (\$)	Projects Completed / Seg 2 Panels Installed	MW Installed	Pole-attached Units Communicating
Segment 1a	2,195	\$ 69,064	-	\$ -	148.8	\$ 13,392	\$0	\$132,733	\$57,114	0	0.0	
Segment 1b	2,534	\$ 83,030	-	\$ -	173.6	\$ 16,219	\$0	\$0	\$133,291	0	0.0	
Segment 1c	537	\$ 16,982	-	\$ -	52.7	\$ 4,919	\$0	\$254,161	\$91,312	0	0.0	
Segment 2	3,832	\$ 119,067	-	\$ -	297.6	\$ 30,664	\$0	\$27,502	\$335,053	0	0.000	158,336
Program Total	9,099	\$ 288,143	-	\$ -	672.7	\$ 65,194	\$0	\$414,396	\$616,770	0	0.000	

Solar 4 All Year-to-Date Activity Report

Year-to-Date Update through August 2019												
Segment	Energy Produced (MWh AC)	Net Energy Sales (\$)	SREC's Sold	SREC Revenue (\$)	Capacity Sold (MW-days)	Net Capacity Sales (\$)	Business Interruption Insurance Recovery (\$)	Investment (\$)	Program Expenses (\$)	Projects Completed / Seg 2 Panels Installed	MW Installed	
Segment 1a	14,369	\$ 317,331	9,170	\$ 2,082,052	1,171.2	\$ 187,166	\$0	\$1,797,487	\$531,874	0	0.0	
Segment 1b	17,336	\$ 428,952	10,488	\$ 2,381,199	1,381.6	\$ 226,683	\$0	\$178,914	\$1,162,205	0	0.0	
Segment 1c	3,805	\$ 91,104	2,633	\$ 597,798	430.0	\$ 68,755	\$0	\$1,788,016	\$598,253	0	0.0	
Segment 2	26,919	\$ 657,746	19,207	\$ 4,362,447	2,509.6	\$ 428,576	\$0	\$289,947	\$2,533,378	0	0.000	
YTD Program Total	62,428	\$ 1,495,132	41,498	\$ 9,423,496	5,492.4	\$ 911,181	\$0	\$4,054,363	\$4,825,709	0	0	

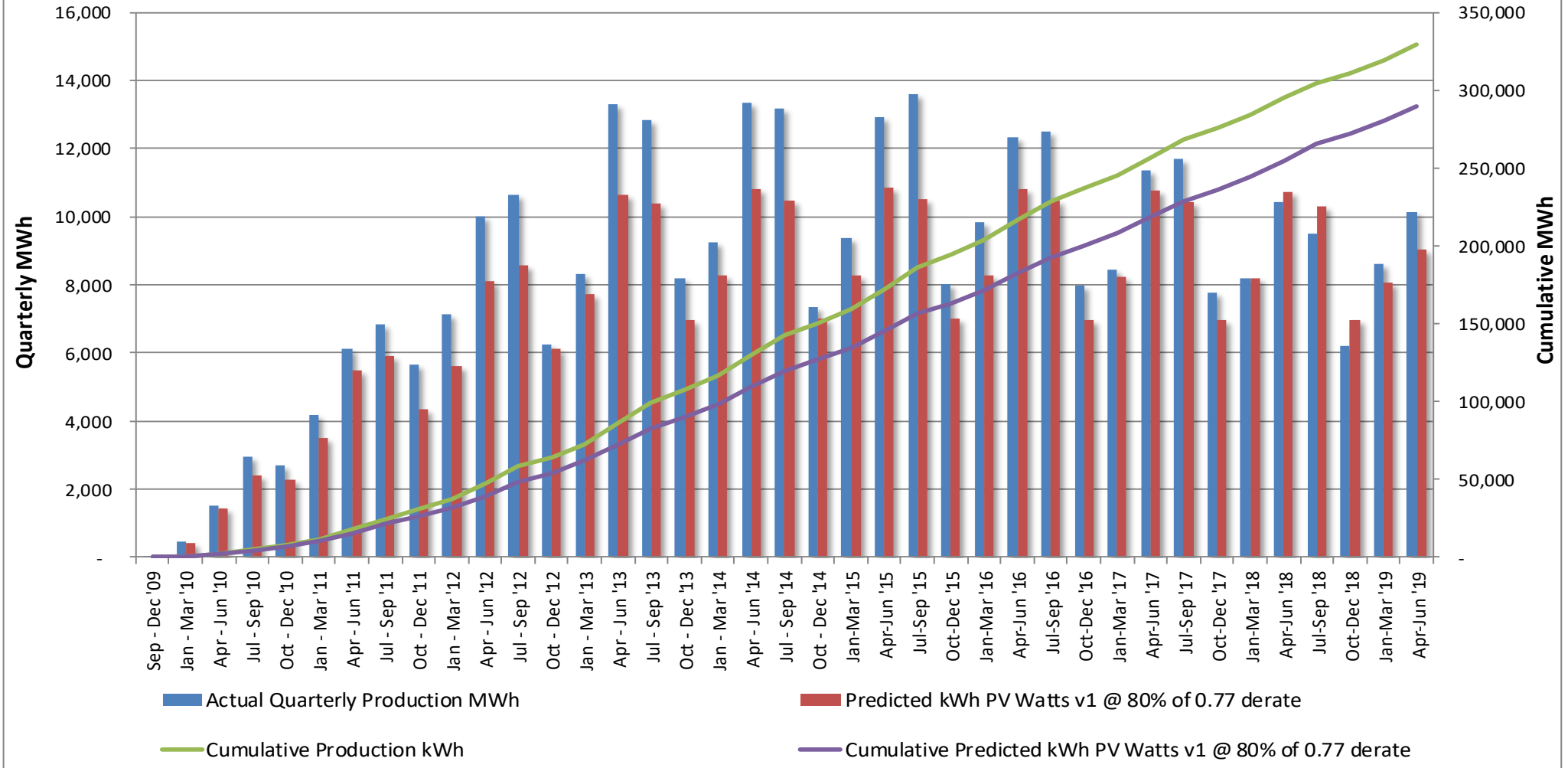
Solar 4 All Program-to-Date Activity Report

Program-to-Date through August 2019												
Segment	Energy Produced (MWh AC)	Net Energy Sales (\$)	SREC's Sold	SREC Revenue (\$)	Capacity Sold (MW-days)	Net Capacity Sales (\$)	Business Interruption Insurance Recovery (\$)	Investment (\$)	Program Expenses (\$)	Projects Completed / Seg 2 Panels Installed	MW Installed	
Segment 1a	157,242	\$5,494,728	152,906	\$32,932,373	14,001.5	\$2,162,244	\$320,277	\$92,768,793	\$6,806,360	10	16.0	
Segment 1b	177,928	\$6,818,342	171,894	\$34,912,599	15,315.7	\$2,659,600	\$457,127	\$79,170,324	\$17,838,715	8	18.6	
Segment 1c	51,899	\$1,786,482	50,173	\$10,745,125	5,450.1	\$763,486	\$0	\$35,233,601	\$6,658,602	6	5.4	
Segment 2	295,110	\$12,678,010	305,367	\$66,691,947	33,910.9	\$4,893,886	\$0	\$278,229,863	\$25,887,366	168,783	37.4	
Program-to-date Total	682,179	\$26,777,562	680,340	\$145,282,044	68,678.2	\$10,479,215	\$777,404	\$485,402,581	\$57,191,043	168,807	77.4	

Notes:

- 1) "SREC's Sold" and "SREC Revenue" includes vintage year 2011 through 2019 SRECs
- 2) Monthly "Pole-attached Units Installed" & "Pole-attached MW Installed" are preliminary estimates and subject to change. Adjustments to prior months will be reflected in YTD values. Capacity specified in certain previously filed capacity reports represented gross installed capacity. The values shown in the table above account for net installed capacity (total installs minus total removals).
- 3) "Pole Attached Units Communicating" represents the *average, daily* number of panels that communicated during the month.
- 4) The columns "Energy Produced" and "SRECs Sold" do not sync because of the timing of SREC auctions, through which SRECs are sold.
- 5) Business interruption insurance recovery received for lost energy sales and SREC sales due to Superstorm Sandy

PSE&G Pole-Attached Solar: Quarterly Performance vs. PV Watts @ 80% of 0.77



Total S4A Fleet Performance:

·August weather conditions were unfavorable for solar production. Actual monthly production compared to plan is +10.7%.

Seg2 (Pole Attached Solar):

- Development of communications network continues.
- Ongoing maintenance of existing installations continues.

REDACTED

PSE&G Pole-Attached -- Summary by Municipality -- August 2019		
Municipality	Total Installed	Total kWdc
Allentown Boro	51	10.99
Audubon Boro	469	100.38
Audubon Park Boro	41	8.54
Barrington Boro	343	74.41
Bayonne City	1,592	363.12
Belleville Twp	768	178.94
Bellmawr Boro	967	208.43
Bergenfield Boro	423	95.41
Berkeley Heights Twp	5	1.2
Beverly City	260	54.78
Bloomfield Twp	1,020	241.17
Bogota Boro	197	46.39
Bordentown City	62	13.3
Bordentown Twp	815	175.22
Bound Brook Boro	378	86.5
Branchburg Twp	22	5.28
Bridgewater Twp	1,620	364.09
Brooklawn Boro	215	45.31
Burlington City	1,201	255.02
Burlington Twp	1,189	249.06
Caldwell Boro	191	45.13
Camden City	5,212	1,137.99
Carlstadt Boro	645	150.88
Carteret Boro	1,558	335.5
Cedar Grove Twp	508	119.35
Cherry Hill Twp	2,926	626.48
Chesterfield Twp	389	83.84
Cinnaminson Twp	1,194	250.58
Clark Twp	601	134.66
Cliffside Park Boro	278	65.78
Clifton City	3,010	702.48
Collingswood Boro	661	142.25
Cranbury Twp	258	56.52
Cranford Twp	681	152.79
Cresskill Boro	2	0.44
Delanco Twp	293	60.8
Delran Twp	599	125.67
Deptford Twp	1,625	353.08
Dumont Boro	427	95.65
Dunellen Boro	278	62.62
East Amwell Twp	2	0.41
East Brunswick Twp	1,941	425.64
East Newark Boro	36	8.01
East Orange City	1,206	284.53
East Rutherford Boro	424	99.31
Eastampton Twp	291	60.82
Edgewater Boro	107	24.95
Edgewater Park Twp	504	103.96
Edison Twp	4,454	973.1
Elizabeth City	3,024	663.48
Elizabeth City	252	56.16

*Latest installation date 9/19/19

*Installs pending municipal data updates
not included in total

REDACTED

PSE&G Pole-Attached -- Summary by Municipality -- August 2019		
Municipality	Total Installed	Total kWdc
Elmwood Park Boro	721	166.05
Emerson Boro	261	58.29
Englewood City	769	177.74
Englewood Cliffs Boro	246	58.27
Essex Fells Twp	58	13.66
Evesham Twp	729	154.97
Ewing Twp	2,324	500.44
Fair Lawn Boro	1,020	227.82
Fairfield Twp Ess	994	232.67
Fairview Boro	247	57.68
Fanwood Boro	249	57.42
Fieldsboro Boro	63	13.96
Florence Twp	876	185.41
Fort Lee Boro	630	148.57
Franklin Twp Som	2,696	584.93
Franklin Twp Som	80	18.15
Garfield City	584	136.1
Garwood Boro	231	52.59
Glen Ridge Boro	12	2.88
Glen Rock Boro	134	30.2
Gloucester City	758	162.82
Gloucester Twp	1,654	356.65
Green Brook Twp	276	62.51
Guttenberg Town	20	4.77
Hackensack City	1,366	316.61
Haddon Heights Boro	344	75.96
Haddon Twp	869	186.65
Haddonfield Boro	154	34.66
Hainesport Twp	452	96.6
Haledon Boro	117	26.33
Hamilton Twp Mer	6,314	1,361.09
Harrison Town	235	53.59
Hasbrouck Heights	359	84.04
Haworth Boro	35	8.04
Hawthorne Boro	419	92.87
Highland Park Boro	466	103.65
Hillsborough Twp	1,548	340.99
Hillsborough Twp	0	0
Hillsdale Boro	13	3.06
Hillside Twp	613	134.99
Hillside Twp	3	0.62
Hi-Nella Boro	50	10.72
Hoboken City	251	59.24
Hohokus Boro	33	7.35
Hopewell Boro	70	16.44
Hopewell Twp Mer	461	101.85
Irvington Town	1,019	227.12
Jersey City	3,763	856.3
Kearny Town	0	0
Kearny Town	1,167	262.31
Kenilworth Boro	309	69.13

*Latest installation date 9/19/19

*Installs pending municipal data updates
not included in total

REDACTED

PSE&G Pole-Attached -- Summary by Municipality -- August 2019		
Municipality	Total Installed	Total kWdc
Lawnside Boro	249	53.72
Lawrence Twp Mer	1,391	301.02
Leonia Boro	178	41.7
Lincoln Park Boro	5	1.17
Linden City	2,328	499.1
Little Falls Twp	411	95.79
Little Ferry Boro	435	100.44
Livingston Twp	0	0
Livingston Twp	430	101.78
Lodi Boro	606	140.66
Lumberton Twp	419	87.69
Lyndhurst Twp	846	198.24
Magnolia Boro	372	83.15
Mansfield Twp Bur	524	108.86
Manville Boro	580	131.13
Maple Shade Twp	1175	247.59
Maplewood Twp	362	81.6
Maywood Boro	206	48.59
Medford Lakes Boro	28	5.9
Medford Twp	556	116.25
Merchantville Boro	193	41.41
Metuchen Boro	525	116.47
Middlesex Boro	890	199.75
Midland Park Boro	76	17.93
Millburn Twp	7	1.66
Millstone Boro	36	7.9
Milltown Boro	2	0.44
Monroe Twp Mid	3	0.63
Montclair Twp	694	165.44
Montgomery Twp	19	4.25
Montgomery Twp	713	157.1
Moonachie Boro	351	80.03
Moorestown Twp	1025	219.29
Mount Ephraim Boro	337	71.74
Mount Holly Twp	509	107.81
Mount Laurel Twp	990	209.35
Mountainside Boro	288	66.27
National Park Boro	344	75.22
New Brunswick City	1608	346.8
New Milford Boro	292	66.31
Newark City	7324	1643.77
North Arlington Boro	504	116.46
North Bergen Twp	1,177	275.38
North Brunswick Twp	1682	369.39
North Caldwell Twp	177	40.92
North Haledon Boro	48	11.08
North Hanover Twp	0	0
North Plainfield Boro	539	121.52
Nutley Town	537	126.5
Oaklyn Boro	266	56
Old Tappan Boro	11	2.64

*Latest installation date 9/19/19

*Installs pending municipal data updates
not included in total

REDACTED

PSE&G Pole-Attached -- Summary by Municipality -- August 2019		
Municipality	Total Installed	Total kWdc
Oradell Boro	93	20.64
Orange City	555	131.84
Palisades Park Boro	401	94.56
Palmyra Boro	402	83.99
Paramus Boro	684	154.82
Park Ridge Boro	0	0
Passaic City	1,014	236.68
Paterson City	3086	703.1
Paulsboro Boro	6	1.24
Pemberton Twp	91	18.94
Pennington Boro	79	18.38
Pennsauken Twp	3,218	677.02
Perth Amboy City	1,447	315.14
Piscataway Twp	2,624	570.61
Plainfield City	1520	339.76
Plainsboro Twp	220	48.32
Princeton Boro	46	10.47
Princeton Twp	114	24.88
Prospect Park Boro	108	24.22
Rahway City	1329	300
Raritan Boro	272	59.78
Ridgefield Boro	341	79.65
Ridgefield Park Village	377	89.27
Ridgewood Village	131	29.63
River Edge Boro	265	60.71
River Vale Twp	11	2.44
Riverside Twp	547	113.9
Riverton Boro	107	23.17
Rochelle Park Twp	250	57.46
Rocky Hill Boro	17	3.73
Roseland Boro	137	32.62
Roselle Boro	624	138.69
Roselle Park Boro	296	68.12
Runnemede Boro	548	118.98
Rutherford Boro	199	44.3
Saddle Brook Twp	5	1.17
Saddle Brook Twp	290	66.09
Saddle River Boro	9	2.16
Scotch Plains Twp	637	145.35
Secaucus Town	957	223.13
Somerdale Boro	367	79.57
Somerville Boro	680	148.94
South Bound Brook Boro	195	43.02
South Brunswick Twp	1309	285.1
South Brunswick Twp	452	97.55
South Hackensack Twp	204	47.44
South Orange Village Twp	93	22.09
South Plainfield Boro	2122	469.55
Southampton Twp	766	160.77
Springfield Twp Bur	424	88.69
Springfield Twp Uni	27	6.18

*Latest installation date 9/19/19

*Installs pending municipal data updates
not included in total

REDACTED

PSE&G Pole-Attached -- Summary by Municipality -- August 2019		
Municipality	Total Installed	Total kWdc
Tavistock Boro	1	0.22
Teaneck Twp	699	161.21
Tenafly Boro	297	68
Teterboro Boro	148	34.69
Totowa Boro	693	158.69
Trenton City	4506	983.24
Union City	24	5.57
Union Twp Uni	1956	434.34
Upper Freehold Twp	75	16.06
Verona Boro	175	41.77
Voorhees Twp	304	66.65
Waldwick Boro	153	34.27
Wallington Boro	265	61.85
Wallington Boro	5	1.17
Warren Twp	51	10.9
Washington Twp Ber	85	19.18
Washington Twp Glo	36	7.76
Washington Twp Mer	343	73.3
Watchung Boro	308	68.56
Wayne Twp	1271	291.04
Weehawken Twp	3	0.72
West Caldwell Twp	506	119.59
West Deptford Twp	1	0.2
West Deptford Twp	1633	351.91
West New York Town	30	6.8
West Orange Twp	1008	236.05
West Paterson Boro	299	68.97
West Windsor Twp	641	140.41
Westampton Twp	417	87.57
Westfield Town	1111	259.77
Westville Boro	504	107.23
Westwood Boro	212	46.97
Willingboro Twp	710	147.08
Winfield Twp	15	3.07
Woodbridge Twp	5547	1210.63
Woodbury City	875	190.73
Woodbury Heights Boro	264	57.33
Woodcliff Lake Boro	66	15.56
Woodlynne Boro	142	29.92
Wood-Ridge Boro	343	80.78
Wyckoff Twp	46	11
TOTAL	169,009	37,433

*Latest installation date 9/19/19

*Installs pending municipal data updates
not included in total

PSE&G Pole-Attached -- Count of Aggregators by Municipality -- August 2019

Municipality	Count of Aggregators Installed through August 2019
Allentown Boro	3
Audubon Boro	7
Barrington Boro	7
Bayonne City	21
Belleville Twp	12
Bellmawr Boro	19
Bergenfield Boro	6
Beverly City	3
Bloomfield Twp	16
Bogota Boro	3
Bordentown City	1
Bordentown Twp	15
Bound Brook Boro	5
Branchburg Twp	1
Bridgewater Twp	45
Brooklawn Boro	6
Burlington City	17
Burlington Twp	18
Caldwell Boro	3
Camden City	62
Carlstadt Boro	12
Carteret Boro	20
Cedar Grove Twp	8
Cherry Hill Twp	64
Chesterfield Twp	16
Cinnaminson Twp	19
Clark Twp	11
Cliffside Park Boro	3
Clifton City	42
Collingswood Boro	10
Cranbury Twp	7
Cranford Twp	11
Delanco Twp	3
Delran Twp	10
Deptford Twp	33
Dumont Boro	6
Dunellen Boro	4
East Brunswick Twp	37
East Newark Boro	1
East Orange City	16
East Rutherford Boro	6
Eastampton Twp	6
Edgewater Boro	5
Edgewater Park Twp	6
Edison Twp	81
Elizabeth City	45
Elmwood Park Boro	12
Emerson Boro	7
Englewood City	17

PSE&G Pole-Attached -- Count of Aggregators by Municipality -- August 2019

Municipality	Count of Aggregators Installed through August 2019
Englewood Cliffs Boro	5
Essex Fells Twp	2
Evesham Twp	14
Ewing Twp	36
Fair Lawn Boro	17
Fairfield Twp Ess	18
Fairview Boro	5
Fanwood Boro	5
Fieldsboro Boro	1
Florence Twp	12
Fort Lee Boro	12
Franklin Twp Som	67
Garfield City	10
Garwood Boro	3
Glen Rock Boro	7
Gloucester City	10
Gloucester Twp	22
Green Brook Twp	6
Guttenberg Town	1
Hackensack City	24
Haddon Heights Boro	4
Haddon Twp	13
Haddonfield Boro	9
Hainesport Twp	3
Haledon Boro	1
Hamilton Twp Mer	86
Harrison Town	5
Hasbrouck Heights	4
Haworth Boro	2
Hawthorne Boro	10
Highland Park Boro	9
Hillsborough Twp	40
Hillsdale Boro	2
Hillside Twp	10
Hi-Nella Boro	1
Hoboken City	6
Hohokus Boro	3
Hopewell Boro	2
Hopewell Twp Mer	30
Irvington Town	17
Jersey City	63
Kearny Town	15
Kenilworth Boro	5
Lawnside Boro	4
Lawrence Twp Mer	35
Leonia Boro	2
Linden City	37
Little Falls Twp	10
Little Ferry Boro	7

PSE&G Pole-Attached -- Count of Aggregators by Municipality -- August 2019

Municipality	Count of Aggregators Installed through August 2019
Livingston Twp	25
Lodi Boro	11
Lumberton Twp	11
Lyndhurst Twp	12
Magnolia Boro	5
Mansfield Twp Bur	15
Manville Boro	9
Maple Shade Twp	12
Maplewood Twp	6
Maywood Boro	7
Medford Lakes Boro	3
Medford Twp	24
Merchantville Boro	1
Metuchen Boro	10
Middlesex Boro	9
Midland Park Boro	7
Millstone Boro	1
Montclair Twp	17
Montgomery Twp	36
Moonachie Boro	5
Moorestown Twp	20
Mount Ephraim Boro	4
Mount Holly Twp	9
Mount Laurel Twp	27
Mountainside Boro	8
National Park Boro	6
New Brunswick City	25
New Milford Boro	5
Newark City	110
North Arlington Boro	8
North Bergen Twp	22
North Brunswick Twp	26
North Caldwell Twp	9
North Haledon Boro	3
North Plainfield Boro	7
Nutley Town	8
Oaklyn Boro	3
Old Tappan Boro	1
Oradell Boro	3
Orange City	9
Palisades Park Boro	6
Palmyra Boro	7
Paramus Boro	23
Passaic City	17
Paterson City	46
Pemberton Twp	6
Pennington Boro	3
Pennsauken Twp	50
Perth Amboy City	24

PSE&G Pole-Attached -- Count of Aggregators by Municipality -- August 2019

Municipality	Count of Aggregators Installed through August 2019
Piscataway Twp	55
Plainfield City	25
Plainsboro Twp	10
Princeton Boro	9
Princeton Twp	16
Prospect Park Boro	1
Rahway City	17
Raritan Boro	5
Ridgefield Boro	4
Ridgefield Park Village	5
Ridgewood Village	9
River Edge Boro	5
River Vale Twp	1
Riverside Twp	4
Riverton Boro	3
Rochelle Park Twp	5
Rocky Hill Boro	4
Roseland Boro	10
Roselle Boro	10
Roselle Park Boro	5
Runnemede Boro	8
Rutherford Boro	8
Saddle Brook Twp	7
Scotch Plains Twp	13
Secaucus Town	17
Somerdale Boro	6
Somerville Boro	8
South Bound Brook Boro	2
South Brunswick Twp	46
South Hackensack Twp	3
South Orange Village Twp	4
South Plainfield Boro	42
Southampton Twp	23
Springfield Twp Bur	13
Teaneck Twp	17
Tenafly Boro	12
Teterboro Boro	2
Totowa Boro	11
Trenton City	56
Undefined Municipality	0
Union City	2
Union Twp Uni	25
Upper Freehold Twp	2
Verona Boro	3
Voorhees Twp	7
Waldwick Boro	10
Wallington Boro	2
Warren Twp	5
Washington Twp Ber	5

PSE&G Pole-Attached -- Count of Aggregators by Municipality -- August 2019

Municipality	Count of Aggregators Installed through August 2019
Washington Twp Glo	1
Washington Twp Mer	7
Watchung Boro	13
Wayne Twp	54
West Caldwell Twp	8
West Deptford Twp	29
West New York Town	3
West Orange Twp	27
West Paterson Boro	9
West Windsor Twp	22
Westampton Twp	9
Westfield Town	24
Westville Boro	4
Westwood Boro	5
Willingboro Twp	17
Woodbridge Twp	88
Woodbury City	13
Woodbury Heights Boro	2
Woodcliff Lake Boro	4
Woodlynne Boro	2
Wood-Ridge Boro	4
Wyckoff Twp	5
Grand Totals:	3,133